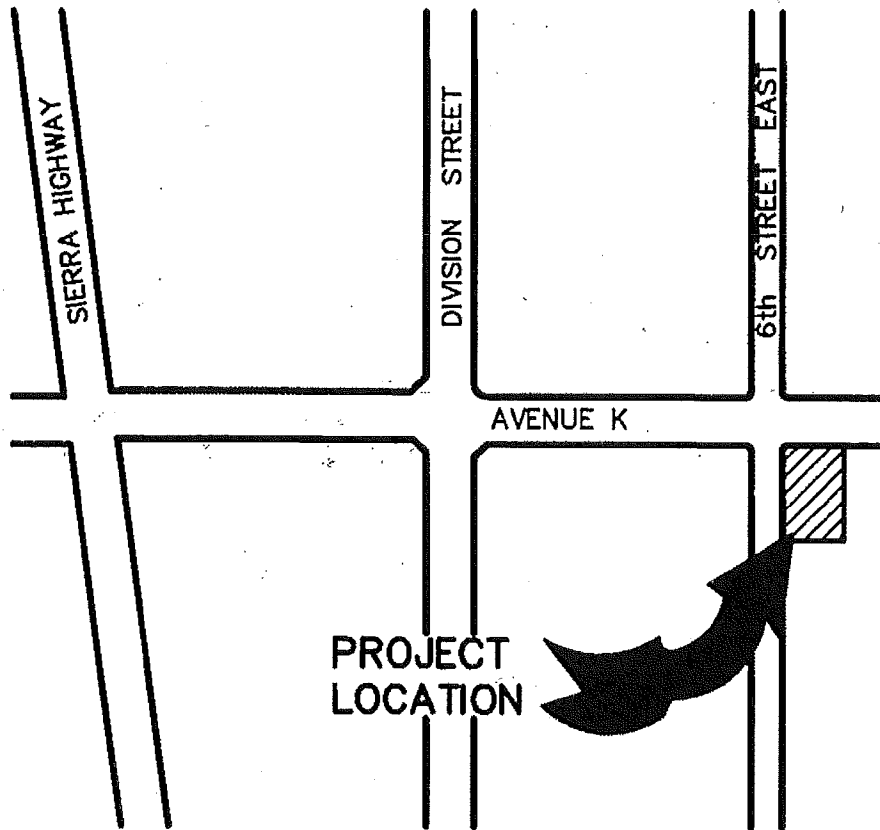




N.T.S.



PROJECT
LOCATION

SPR 07-15
VICINITY MAP

TRACT NO. 061680

IN THE CITY OF LANCASTER, COUNTY OF LOS ANGELES, STATE OF CALIFORNIA

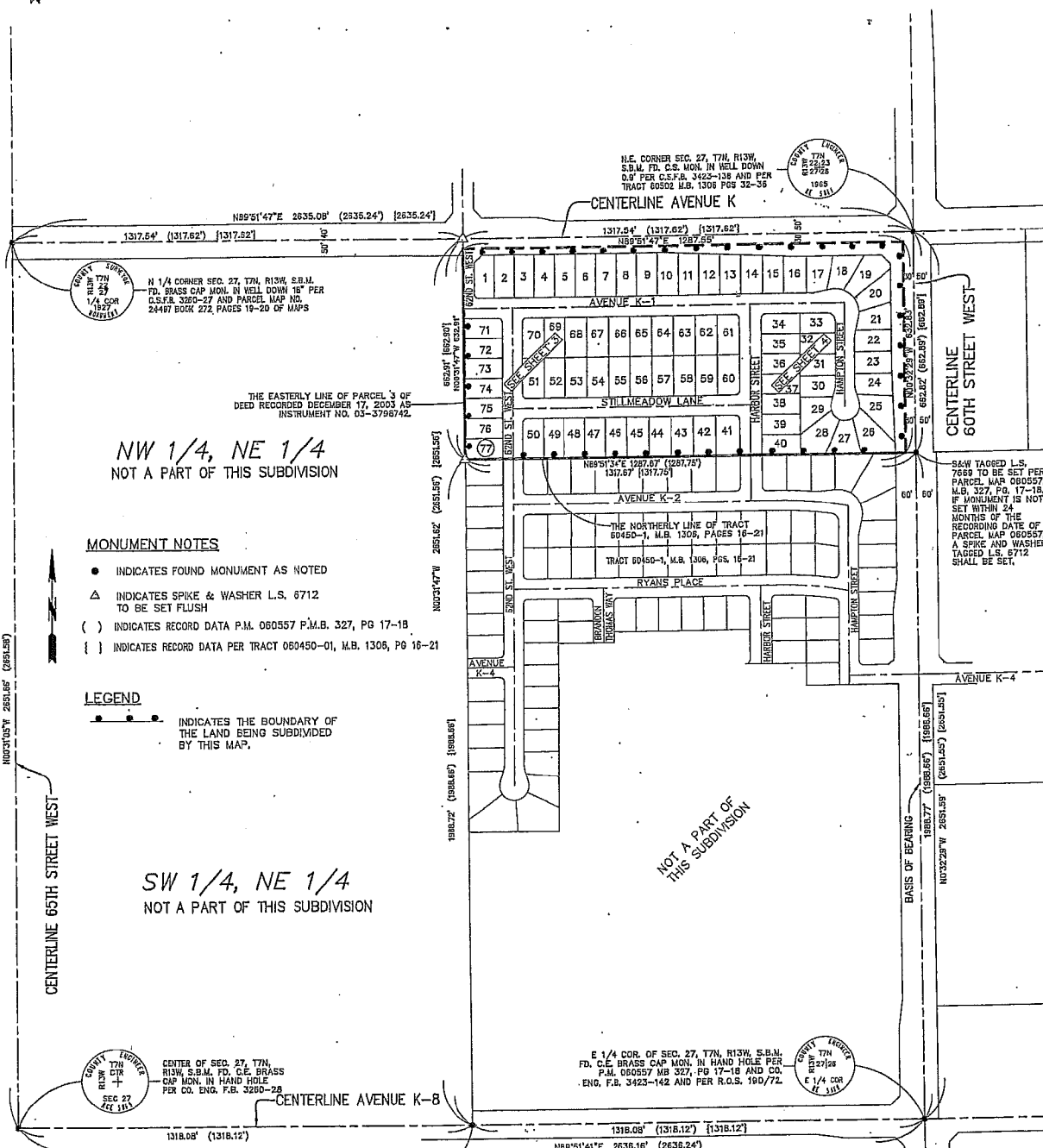
LAWRENCE WILSON L.S. 6712

77 LOTS

18.71 ACRES

SURVEY DETAIL AND INDEX MAP

06-1680-180



NW 1/4, NE 1/4
NOT A PART OF THIS SUBDIVISION

MONUMENT NOTES

- INDICATES FOUND MONUMENT AS NOTED
- △ INDICATES SPIKE & WASHER L.S. 6712 TO BE SET FLUSH
- () INDICATES RECORD DATA P.M. 060557 P.M.B. 327, PG 17-18
- [] INDICATES RECORD DATA PER TRACT 060450-01, M.B. 1306, PG 16-21

LEGEND

—●—●—●— INDICATES THE BOUNDARY OF THE LAND BEING SUBDIVIDED BY THIS MAP.

SW 1/4, NE 1/4
NOT A PART OF THIS SUBDIVISION

NOT A PART OF THIS SUBDIVISION

I HEREBY CERTIFY THAT SECURITY IN THE AMOUNT OF \$ 72,125.00 HAS BEEN FILED WITH THE CLERK OF THE BOARD OF SUPERVISORS OF THE COUNTY OF LOS ANGELES AS SECURITY FOR THE PAYMENT OF TAXES AND SPECIAL ASSESSMENTS COLLECTED AS TAXES ON THE LAND SHOWN ON MAP OF TRACT NO./PARCEL MAP NO. 061680 AS REQUIRED BY LAW.

EXECUTIVE OFFICER-CLERK OF THE BOARD OF SUPERVISORS OF THE COUNTY OF LOS ANGELES, STATE OF CALIFORNIA
 By [Signature] DEPUTY



I HEREBY CERTIFY THAT ALL CERTIFICATES HAVE BEEN FILED AND DEPOSITS HAVE BEEN MADE THAT ARE REQUIRED UNDER THE PROVISIONS OF SECTIONS 66492 AND 66493 OF THE SUBDIVISION MAP ACT.

EXECUTIVE OFFICER-CLERK OF THE BOARD OF SUPERVISORS OF THE COUNTY OF LOS ANGELES, STATE OF CALIFORNIA
 By [Signature] DEPUTY



S&W TAGGED L.S. 7659 TO BE SET PER PARCEL MAP 060557, M.B. 327, PG. 17-18. IF MONUMENT IS NOT SET WITHIN 24 MONTHS OF THE RECORDING DATE OF PARCEL MAP 060557, A SPIKE AND WASHER TAGGED L.S. 6712 SHALL BE SET.

E 1/4 COR. OF SEC. 27, T7N, R13W, S.B.M. FD. C.C. BRASS CAP MON. IN HAND HOLE PER P.M. 060557 MB 327, PG 17-18 AND CO. ENG. F.B. 3423-142 AND PER R.O.S. 190/72.

S&W TAGGED L.S. 7659 TO BE SET PER PARCEL MAP 060557, M.B. 327, PG. 17-18. IF MONUMENT IS NOT SET WITHIN 24 MONTHS OF THE RECORDING DATE OF PARCEL MAP 060557, A SPIKE AND WASHER TAGGED L.S. 6712 SHALL BE SET.