

TRACT No. 53102-1

IN THE CITY OF LANCASTER, COUNTY OF LOS ANGELES,
STATE OF CALIFORNIA


54 LOTS

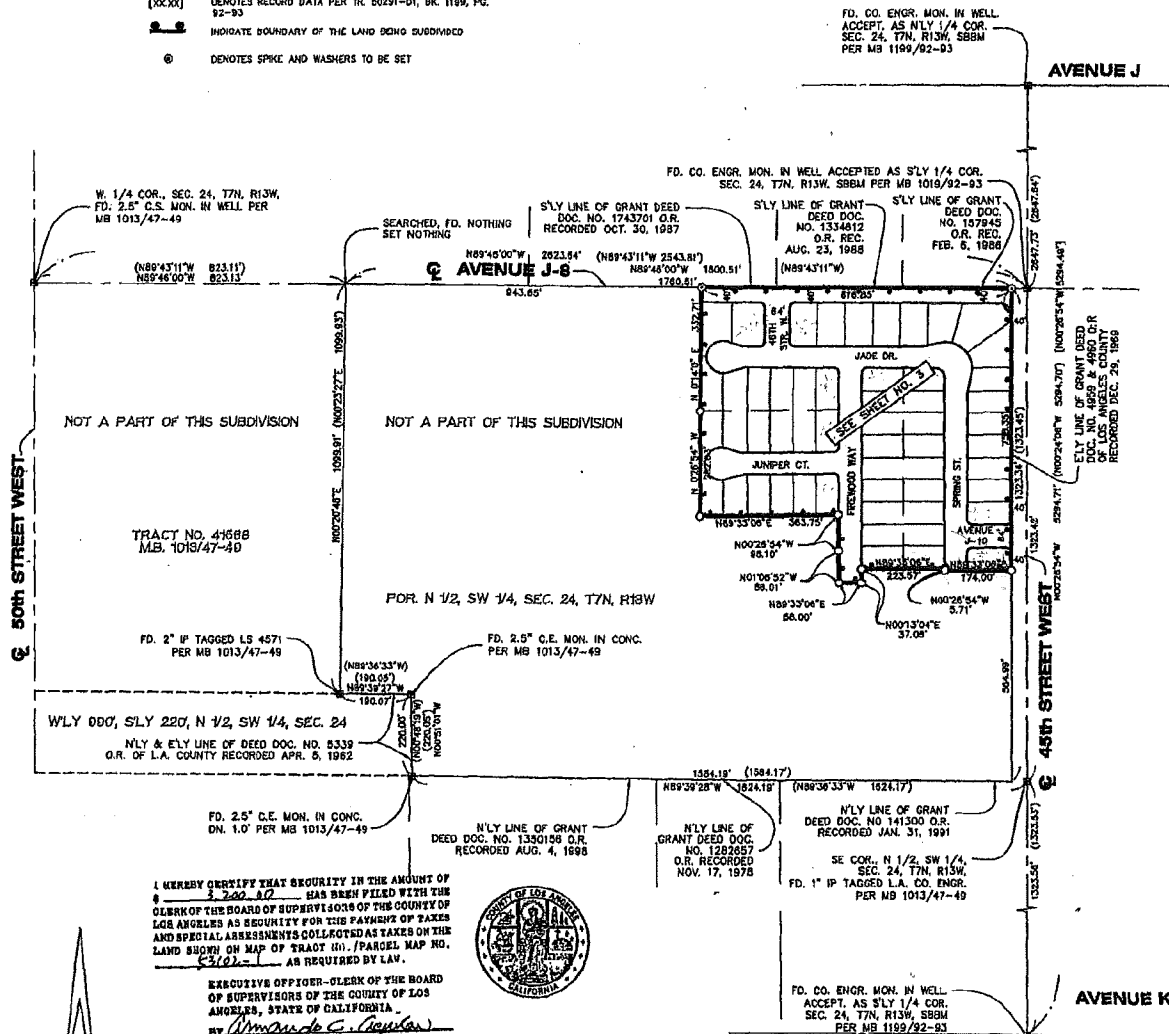
CROUSE/BEERS & ASSOCIATES, INC.
DOUGLAS N. CROUSE R.C.E. 23796

13.10 ACRES

SURVEY DETAIL AND INDEX MAP

ENGINEER'S NOTES:

- Ⓜ DENOTES FOUND MONUMENTS AS NOTED
- DENOTES SET 2 3/8" O.D. IRON PIPE TO BE SET
- 1" I.P., 18" LONG FLUSH TAGGED R.C.E. 23796 TO BE SET AT ALL REAR LOT CORNERS UNLESS OTHERWISE NOTED
- LEAD & TACK, TAGGED R.C.E. 23796, TO BE SET IN THE TOP OF CURB AT THE POINT PROLONGATION OF ALL SIDE LOT LINES
- (XXXX) DENOTES RECORD DATA PER TR. 41888, BK. 1013, PG. 47-49
- [XXXX] DENOTES RECORD DATA PER TR. 80291-D1, BK. 1189, PG. 92-93
-  INDICATE BOUNDARY OF THE LAND BEING SUBDIVIDED
- ⊙ DENOTES SPIKE AND WASHERS TO BE SET



I HEREBY CERTIFY THAT SECURITY IN THE AMOUNT OF \$ 3,200.00 HAS BEEN FILED WITH THE CLERK OF THE BOARD OF SUPERVISORS OF THE COUNTY OF LOS ANGELES AS SECURITY FOR THE PAYMENT OF TAXES AND SPECIAL ASSESSMENTS COLLECTED AS TAXES ON THE LAND SHOWN ON MAP OF TRACT NO. /PARCEL MAP NO. 53102-1 AS REQUIRED BY LAW.

EXECUTIVE OFFICER-CLERK OF THE BOARD OF SUPERVISORS OF THE COUNTY OF LOS ANGELES, STATE OF CALIFORNIA
 BY *Armando C. Aguilar*
 DEPUTY 8/12/02



I HEREBY CERTIFY THAT ALL CERTIFICATES HAVE BEEN FILED AND DEPOSITS HAVE BEEN MADE THAT ARE REQUIRED UNDER THE PROVISIONS OF SECTIONS 86492 AND 86493 OF THE SUBDIVISION MAP ACT.

EXECUTIVE OFFICER-CLERK OF THE BOARD OF SUPERVISORS OF THE COUNTY OF LOS ANGELES, STATE OF CALIFORNIA
 BY *Armando C. Aguilar*
 DEPUTY 8/12/02



TRACT NO. 061680

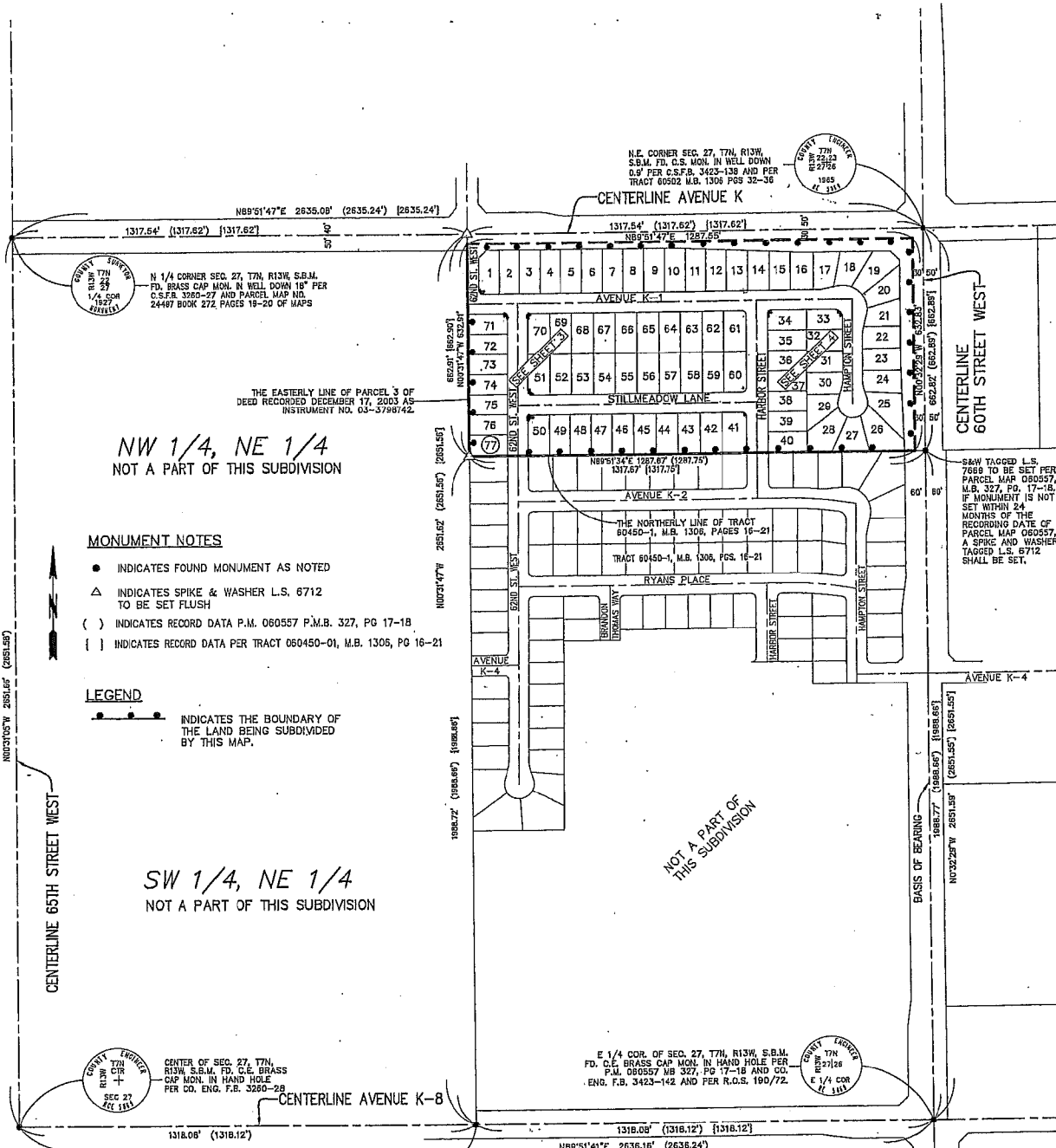
IN THE CITY OF LANCASTER, COUNTY OF LOS ANGELES, STATE OF CALIFORNIA
LAWRENCE WILSON L.S. 6712

77 LOTS

18.71 ACRES

SURVEY DETAIL AND INDEX MAP

06-1680-2



NW 1/4, NE 1/4
NOT A PART OF THIS SUBDIVISION

MONUMENT NOTES

- INDICATES FOUND MONUMENT AS NOTED
- ▲ INDICATES SPIKE & WASHER L.S. 6712 TO BE SET FLUSH
- () INDICATES RECORD DATA P.M. 060557 P.M.B. 327, PG 17-18
- [] INDICATES RECORD DATA PER TRACT 060450-01, M.B. 1306, PG 16-21

LEGEND

- INDICATES THE BOUNDARY OF THE LAND BEING SUBDIVIDED BY THIS MAP.

SW 1/4, NE 1/4
NOT A PART OF THIS SUBDIVISION

NOT A PART OF THIS SUBDIVISION

I HEREBY CERTIFY THAT SECURITY IN THE AMOUNT OF \$ 72,125.00 HAS BEEN FILED WITH THE CLERK OF THE BOARD OF SUPERVISORS OF THE COUNTY OF LOS ANGELES AS SECURITY FOR THE PAYMENT OF TAXES AND SPECIAL ASSESSMENTS COLLECTED AS TAXES ON THE LAND SHOWN ON MAP OF TRACT NO. 061680 AS REQUIRED BY LAW.

EXECUTIVE OFFICER-CLERK OF THE BOARD OF SUPERVISORS OF THE COUNTY OF LOS ANGELES, STATE OF CALIFORNIA.

By [Signature] DEPUTY



I HEREBY CERTIFY THAT ALL CERTIFICATES HAVE BEEN FILED AND DEPOSITS HAVE BEEN MADE THAT ARE REQUIRED UNDER THE PROVISIONS OF SECTIONS 6649E AND 6649S OF THE SUBDIVISION MAP ACT.

EXECUTIVE OFFICER-CLERK OF THE BOARD OF SUPERVISORS OF THE COUNTY OF LOS ANGELES, STATE OF CALIFORNIA.

BY [Signature] DEPUTY



S&W TAGGED L.S. 7659 TO BE SET PER PARCEL MAP 060557, M.B. 327, PG. 17-18. IF MONUMENT IS NOT SET WITHIN 24 MONTHS OF THE RECORDING DATE OF PARCEL MAP 060557, A SPIKE AND WASHER TAGGED L.S. 6712 SHALL BE SET.

S&W TAGGED L.S. 7659 TO BE SET PER PARCEL MAP 060557, M.B. 327, PG. 17-18. IF MONUMENT IS NOT SET WITHIN 24 MONTHS OF THE RECORDING DATE OF PARCEL MAP 060557, A SPIKE AND WASHER TAGGED L.S. 6712 SHALL BE SET.

E 1/4 COR. OF SEC. 27, T7N, R13W, S.B.M. FD. C.E. BRASS CAP MON. IN HAND HOLE PER P.M. 060557 MB 327, PG. 17-18 AND CO. ENG. P.B. 3423-142 AND PER R.O.S. 190/72.

N 1/4 CORNER SEC. 27, T7N, R13W, S.B.M. FD. BRASS CAP MON. IN WELL DOWN 18" PER C.S.F.B. 3260-27 AND PARCEL MAP NO. 24497 BOOK 272, PAGES 19-20 OF MAPS

THE EASTERLY LINE OF PARCEL 3 OF DEED RECORDED DECEMBER 17, 2003 AS INSTRUMENT NO. 03-3798/42.

N.E. CORNER SEC. 27, T7N, R13W, S.B.M. FD. C.S. MON. IN WELL DOWN 0.9' PER C.S.F.B. 3423-138 AND PER TRACT 06052 M.B. 1306 PGS 32-36