

EXHIBIT A
ACCEPTANCE OF IMPROVEMENTS
LANCASTER DRAINAGE MAINTENANCE DISTRICT
 January 26, 2010

PROJECT NUMBER	LOCATION	DEVELOPER	1ST YEAR MAINTENANCE COST	DATE OF COUNCIL APPROVED	ANNEXATION NO.	RESOLUTION NO. CONFIRMING THE DIAGRAMS & ASSESSMENTS & ORDERING THE ANNEXATION
TR 060147	Northwest corner of Avenue J and 25th St. E.	Richmond American Homes of CA, Inc.	\$5,900.00	12/14/2004	04-114	04-454
TOTAL:			\$5,900.00			

SCALE 1" = 200'

VESTING TRACT NO. 060147 SHEET 2 OF 7 SHEETS

IN THE CITY OF LANCASTER
COUNTY OF LOS ANGELES, STATE OF CALIFORNIA

PACIFIC COAST CIVIL, INC.
RANDALL A. GREENWOOD R.C.E. 29220

120 LOTS

SURVEY DETAIL AND INDEX MAP

27.39 ACRES



S.W. 1/4 COR., SEC. 18 T.7N.,
R.11W., S.B.M. FD. O.S. MON.
PER C.S. 1662/150

CEN. SEC. 18 T.7N.,
R.11W., S.B.M. FD. O.S. MON.
PER C.S. 1662/151



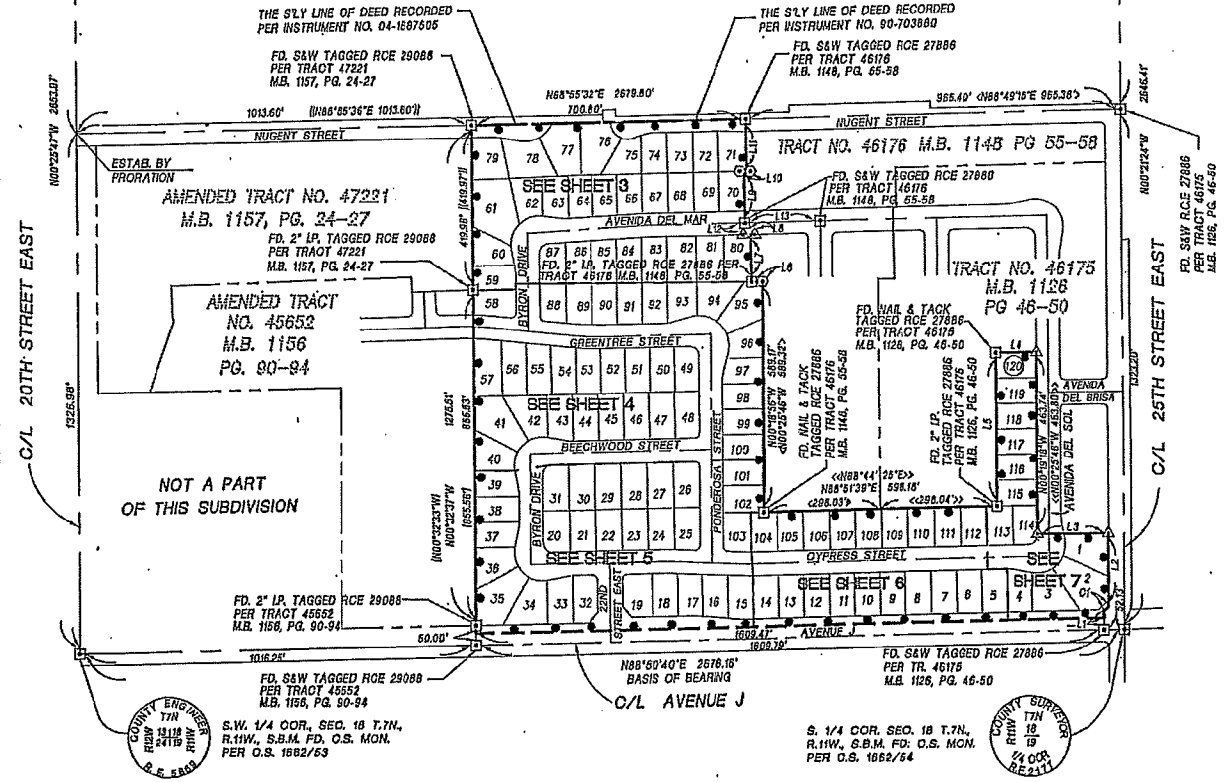
C/L LANCASTER BOULEVARD

N89°00'26"E 2681.45'

LINE DATA		
NO.	BEARING	DISTANCE
L1	N01°09'20"W <D01°15'35"W>	60.00' <<60.00'>>
L2	N00°27'24"W <D0°27'45"W>	160.15' <<160.15'>>
L3	N89°40'42"E <S89°34'14"E>	183.23' <<183.23'>>
L4	N89°40'42"E <S89°34'14"E>	106.13' <<106.00'>>
L5	N04°20'48"W <S100°28'45"W>	391.64' <<391.64'>>
L6	N89°41'04"E <S89°34'14"E>	21.45' <<21.44'>>
L7	N01°04'22"W <S101°10'45"W>	119.91' <<119.85'>>
L8	N88°55'38"E <S88°48'15"E>	14.55' <<14.68'>>
L9	N01°04'22"W <S101°10'45"W>	131.94' <<132.00'>>
L10	N88°55'32"E <S88°48'15"E>	6.78' <<6.78'>>
L11	N01°04'05"W <S101°10'45"W>	132.84' <<133.00'>>
L12	N01°04'22"W <S101°10'45"W>	30.00' <<30.00'>>
L13	N88°55'38"E <S88°48'15"E>	150.11' <<153.09'>>

CURVE DATA				
NO.	RADIUS	DELTA	ARC	TAN
C1	13.00'	89°12'04"	20.24'	13.82'
	<<13.00'>>	<<89°12'00">>	<<20.24'>>	<<13.82'>>

NOT A PART
OF THIS SUBDIVISION



LEGEND

- | | INDICATES RECORD DIMENSIONS PER TRACT NO. 45652, M.B. 1156, PGS 90-94 UNLESS OTHERWISE NOTED.
- < > INDICATES RECORD DIMENSIONS PER TRACT NO. 46176, M.B. 1148, PGS. 65-68 UNLESS OTHERWISE NOTED
- || INDICATES RECORD DIMENSIONS PER TRACT NO. 47221, M.B. 1157, PGS. 24-27 UNLESS OTHERWISE NOTED.
- << >> INDICATES RECORD DIMENSIONS PER TRACT NO. 46175, M.B. 1168, PGS. 46-50 UNLESS OTHERWISE NOTED.
- |— INDICATES THE BOUNDARY OF THE LAND BEING SUBDIVIDED BY THIS MAP.
- FOUND MONUMENT AS DESCRIBED.
- 2 3/8" I.P. TO BE SET.
- FOUND NOTHING, LEAD & TACK TO BE SET.
- △— FOUND NOTHING, 2 3/8" I.P. TO BE SET.

