

# TRACT No. 53102-1

IN THE CITY OF LANCASTER, COUNTY OF LOS ANGELES,  
STATE OF CALIFORNIA

54 LOTS

CROUSE/BEERS & ASSOCIATES, INC.  
DOUGLAS N. CROUSE R.C.E. 23796

13.10 ACRES

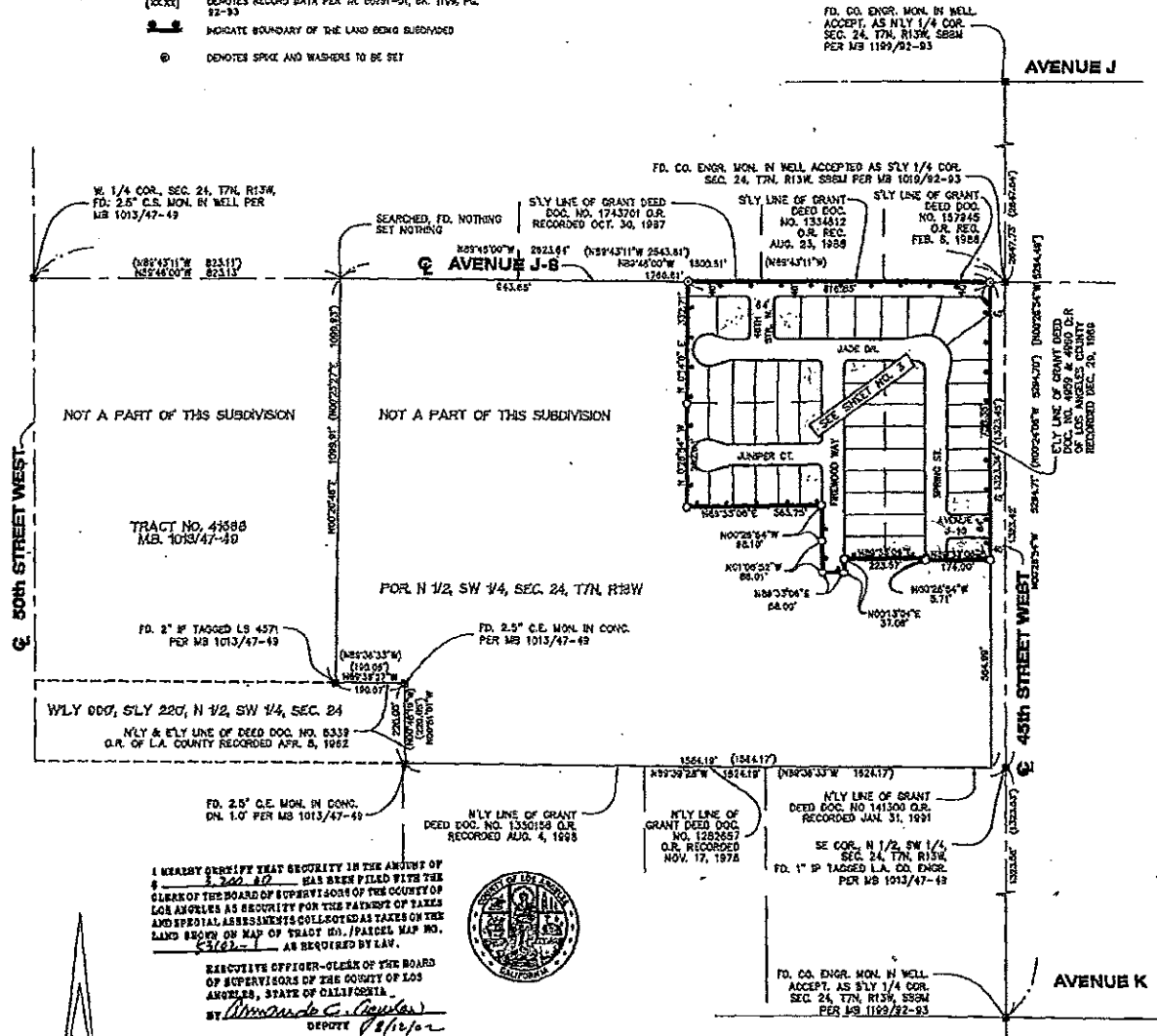
## SURVEY DETAIL AND INDEX MAP

### ENGINEER'S NOTES:

- Ⓚ DENOTES FOUND MONUMENTS AS NOTED
- DENOTES SET 2 3/8" O.D. IRON PIPE TO BE SET
- 1" LP. 18' LONG FLUSH TAGGED R.C.E. 23796 TO BE SET AT ALL REAR LOT CORNERS UNLESS OTHERWISE NOTED
- LEAD & TACK TAGGED R.C.E. 23796 TO BE SET IN THE TOP OF CURB AT THE POINT PROLONGATION OF ALL SIDE LOT LINES
- (XXXX) DENOTES RECORD DATA PER TR. 41554, BK. 1013, PG. 47-49
- (XXXX) DENOTES RECORD DATA PER TR. 60591-91, BK. 1169, PG. 52-53
- |— MORTGAGE BOUNDARY OF THE LAND BEING SUBDIVIDED
- Ⓛ DENOTES SPRICE AND WASHERS TO BE SET

FD. CO. ENGR. MON. IN WELL ACCEPT. AS NLY 1/4 COR. SEC. 24, T7N, R13W, S38M PER MB 1199/92-93

AVENUE J



I HEREBY CERTIFY THAT SECURITY IN THE AMOUNT OF \$ 3,000.00 HAS BEEN FILED WITH THE CLERK OF THE BOARD OF SUPERVISORS OF THE COUNTY OF LOS ANGELES AS SECURITY FOR THE PAYMENT OF TAXES AND SPECIAL ASSESSMENTS COLLECTED AS TAXES ON THE LAND SHOWN ON MAP OF TRACT NO. 53102-1 AS REQUIRED BY LAW.

EXECUTIVE OFFICER-CLERK OF THE BOARD OF SUPERVISORS OF THE COUNTY OF LOS ANGELES, STATE OF CALIFORNIA  
 BY *Armando C. Gaudin*  
 DEPUTY 8/2/02



I HEREBY CERTIFY THAT ALL CERTIFICATES HAVE BEEN FILED AND DEPOSITS HAVE BEEN MADE THAT ARE REQUIRED UNDER THE PROVISIONS OF SECTIONS 85493 AND 86493 OF THE SUBDIVISION MAP ACT.

EXECUTIVE OFFICER-CLERK OF THE BOARD OF SUPERVISORS OF THE COUNTY OF LOS ANGELES, STATE OF CALIFORNIA  
 BY *Armando C. Gaudin*  
 DEPUTY 8/2/02

