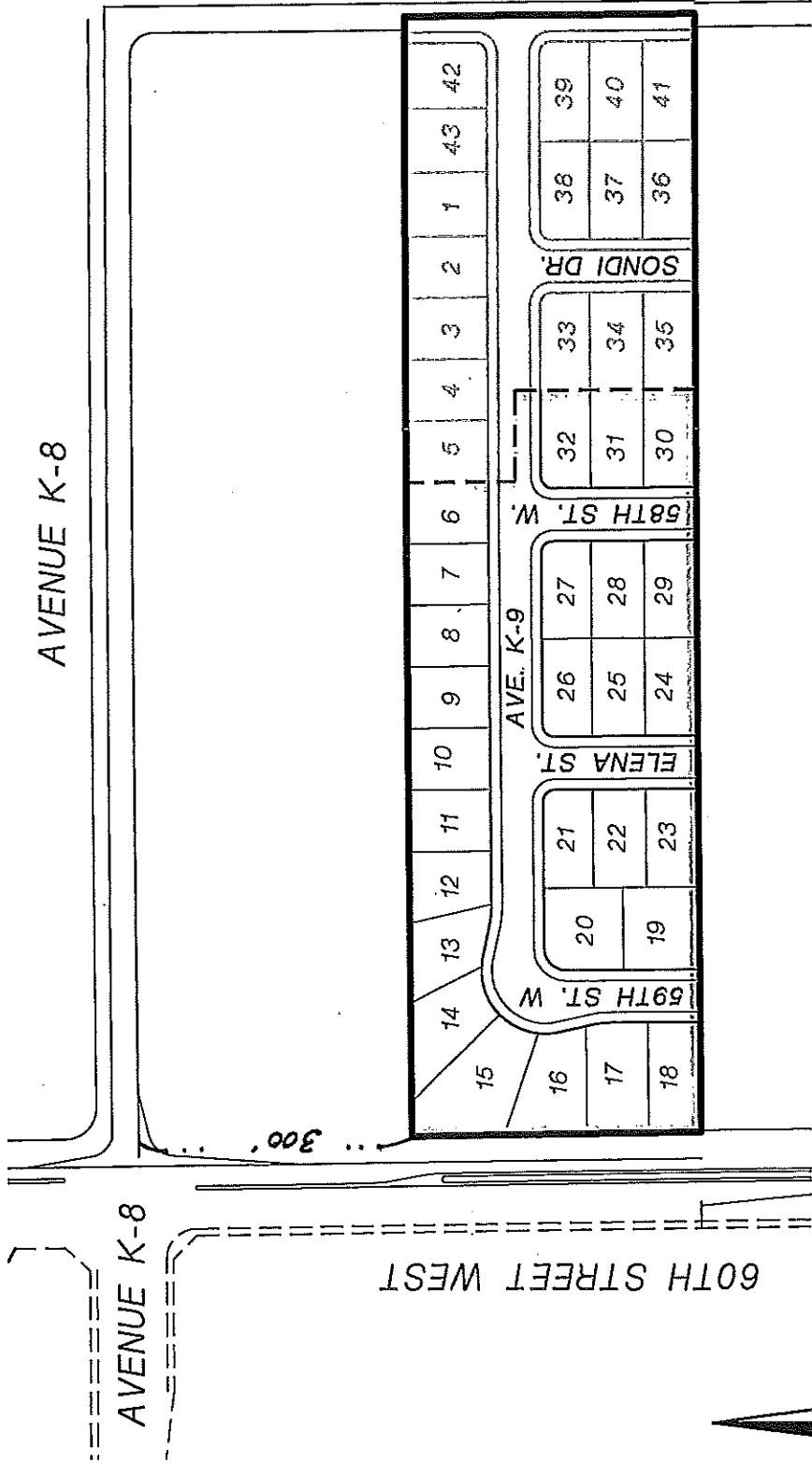


EXHIBIT A
ACCEPTANCE OF IMPROVEMENTS
LANCASTER LANDSCAPE MAINTENANCE DISTRICT NO. 1
23-Feb-10

PROJECT NUMBER	LOCATION	DEVELOPER	1ST YEAR MAINTENANCE COST	DATE OF COUNCIL APPROVED	RESOLUTION NO. INITIATING PROCEEDINGS FOR ANNEXATION INTO LMD	RESOLUTION NO. DECLARING ITS INTENTION TO ANNEX TO TERRITORY	RESOLUTION NO. CONFIRMING THE DIAGRAM AND ASSESSMENT
TR 060524, Ph. 1 (Lots: 6-32)	East side of 60th St. W., approximately 300' south of Avenue K-8	Richmond American Homes of CA., Inc.	\$3,440.00	11/09/2004	04-429	04-430	04-433
TR 060811, Ph. 1 (Lots: 1-4, 40-41)	Northeast corner of 60th St. W. and Avenue K-12	Richmond American Homes of CA., Inc.	\$3,280.00	11/09/2004	04-429	04-430	04-433
TR 060889	Northeast corner of Avenue L and 60th St. W.	Richmond American Homes of CA., Inc.	\$6,800.00	11/09/2004	04-429	04-430	04-433
Total:			\$13,520.00				

TRACT NO. 060524
 CITY OF LANCASTER
 RICHMOND AMERICAN HOMES
 LOTS 6-32



NO SCALE

60TH STREET WEST

AVENUE K-8

AVENUE K-9

69TH ST. W.

ELENA ST.

58TH ST. W.

SONDI DR.

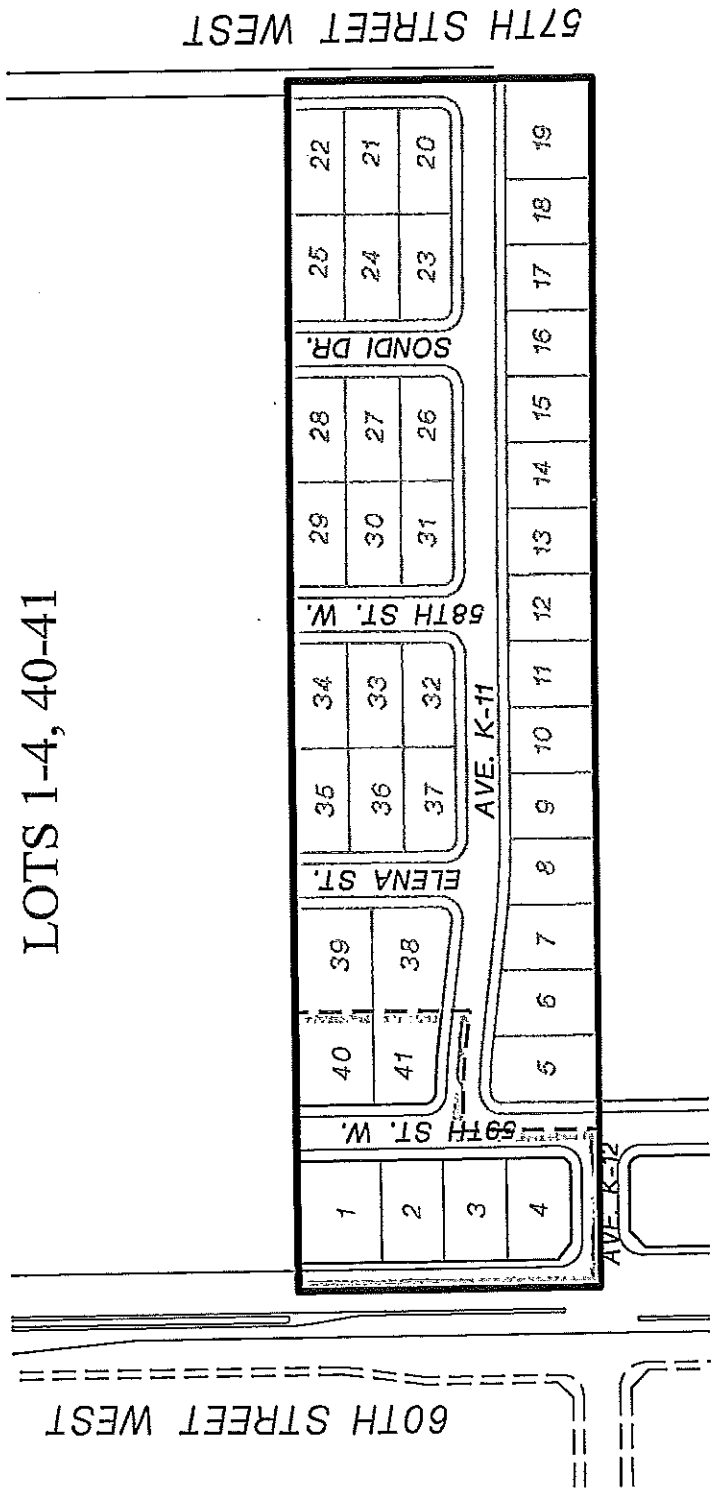
300'

TRACT NO. 060811

CITY OF LANCASTER

RICHMOND AMERICAN HOMES

LOTS 1-4, 40-41



NO SCALE

SCALE 1" = 200'

TRACT NO. 060889

SHEET 3 OF 8 SHEETS

85 LOTS

23.50 ACRES

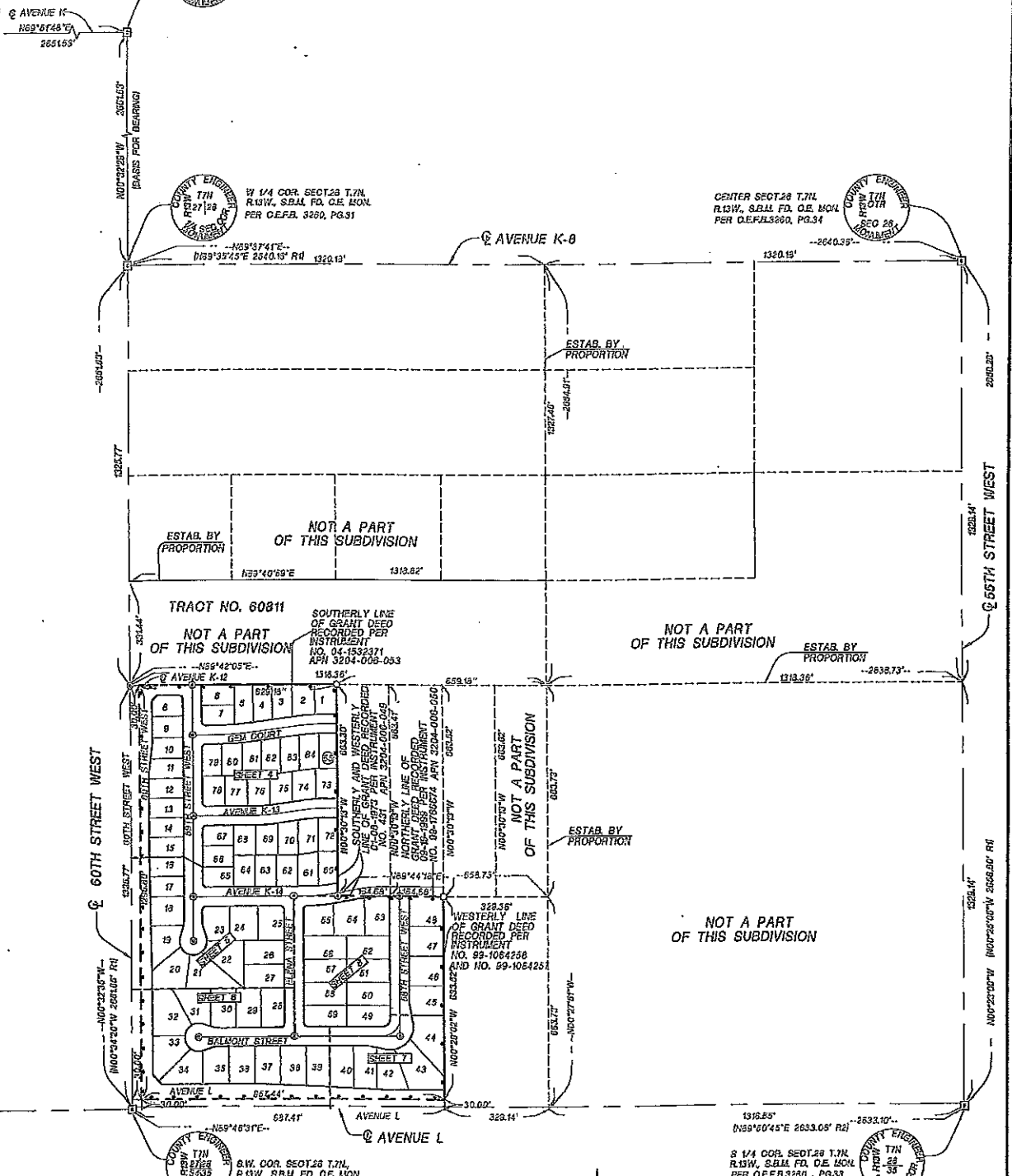
IN THE CITY OF LANCASTER
COUNTY OF LOS ANGELES, STATE OF CALIFORNIA
RANDALL A. GREENWOOD R.C.E. 29220

SURVEY DETAIL AND INDEX MAP

NW COR. OF SECT. 28 T.7N.
R.13W., S.B.M. FD. O.E. MON.
PER O.E.F.B. 3260, PG.30.

CENTER SECT. 28 T.7N.
R.13W., S.B.M. FD. O.E. MON.
PER O.E.F.B. 3260, PG.34

W 1/4 COR. SECT. 28 T.7N.
R.13W., S.B.M. FD. O.E. MON.
PER O.E.F.B. 3260, PG.31



LEGEND

- INDICATES THE BOUNDARY OF THE LAND BEING SUBDIVIDED BY THIS MAP
- ⊗— INDICATES FOUND MONUMENTS AS NOTED
- 2 1/2" O.D. IRON PIPE LEAD & TAG AT TOP OF BLOCK WALLS WHERE IT APPLIES
- SPIKE AND WASHER "TO BE SET" FLUSH, RCE 29220
- (R1) RECORD INFORMATION FROM COUNTY SURVEYOR BOOK 2894-3 A3 OF A4
- (R2) RECORD INFORMATION FROM COUNTY SURVEYOR BOOK 2814-1 A4 OF A4

