

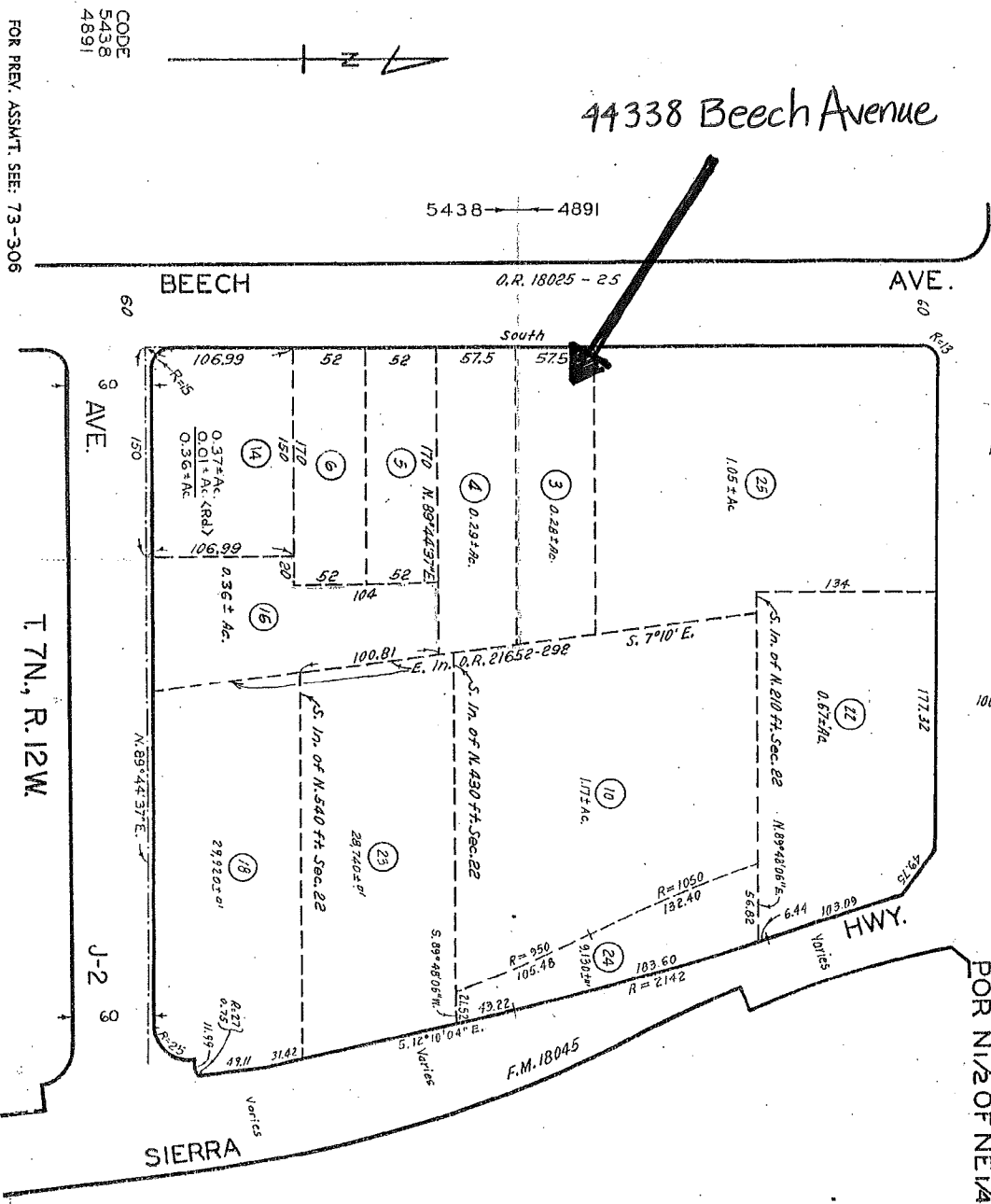
2008

AVE.

C.S. 8200

POR N/2 OF NE 1/4 SEC 22

44338 Beech Avenue



CODE
5438
4891
FOR PREV. ASSM'T. SEE: 73-306

T. 7N., R. 12W.

J-2 3

7-23-65
7-30-65
Revised
T-16-65
10-22-65
4-26-66
3-6-62
7/12/25/09
1/10/24/09
180391
435329-65
435329-65
9301/103/007001-41
9312/400/1001-41
5312/12/001102-41
5603/5/0003001-41
2007/009/0000001-41