

EXHIBIT A
ACCEPTANCE OF IMPROVEMENTS
LANCASTER DRAINAGE BENEFIT ASSESSMENT DISTRICT
May 25, 2010

PROJECT NUMBER	LOCATION	DEVELOPER	1ST YEAR MAINTENANCE COST	DATE OF COUNCIL APPROVED	ANNEXATION NO.	RESOLUTION NO. CONFIRMING THE DIAGRAMS & ASSESSMENTS & ORDERING THE ANNEXATION
TR 060889	Northeast corner of Aveue L and 60th Street W.	Richmond American Homes of CA, Inc.	\$4,250.00	11/09/2004	04-95	04-431
TOTAL:			\$4,250.00			

SCALE 1" = 200'

TRACT NO. 060889

SHEET 3 OF 8 SHEETS

85 LOTS

23.50 ACRES

IN THE CITY OF LANCASTER
COUNTY OF LOS ANGELES, STATE OF CALIFORNIA
RANDALL A. GREENWOOD R.C.E. 29220

SURVEY DETAIL AND INDEX MAP



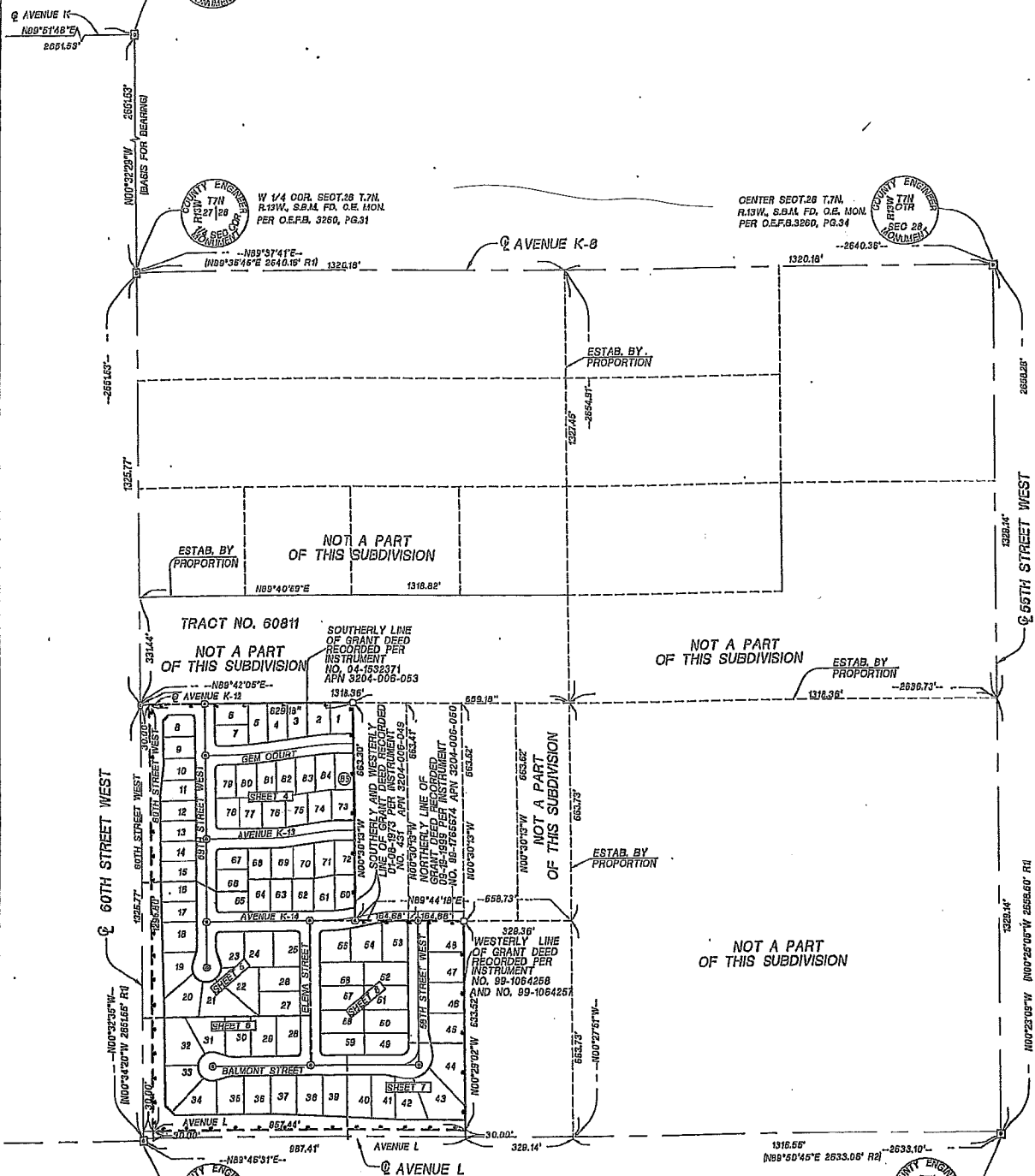
NW COR. OF SECT. 26 T.7N.
R.13W, S.34M, FD, O.E. MON.
PER O.E.F.B. 3260, PG.30.



W 1/4 COR. SECT. 26 T.7N.
R.13W, S.34M, FD, O.E. MON.
PER O.E.F.B. 3260, PG.31



CENTER SECT. 26 T.7N.
R.13W, S.34M, FD, O.E. MON.
PER O.E.F.B. 3260, PG.34



- LEGEND**
- ● INDICATES THE BOUNDARY OF THE LAND BEING SUBDIVIDED BY THIS MAP
 - INDICATES FOUND MONUMENTS AS NOTED
 - 2 3/4" O.D. IRON PIPE LEAD & TAG AT TOP OF BLOCK WALLS WHERE IT APPLIES
 - ⊙ SPIKE AND WASHER "TO BE SET" FLUSH, RCE 29220
 - (R1) RECORD INFORMATION FROM COUNTY SURVEYOR BOOK 2894-3 A3 OF A4
 - (R2) RECORD INFORMATION FROM COUNTY SURVEYOR BOOK 2814-1 A4 OF A4

