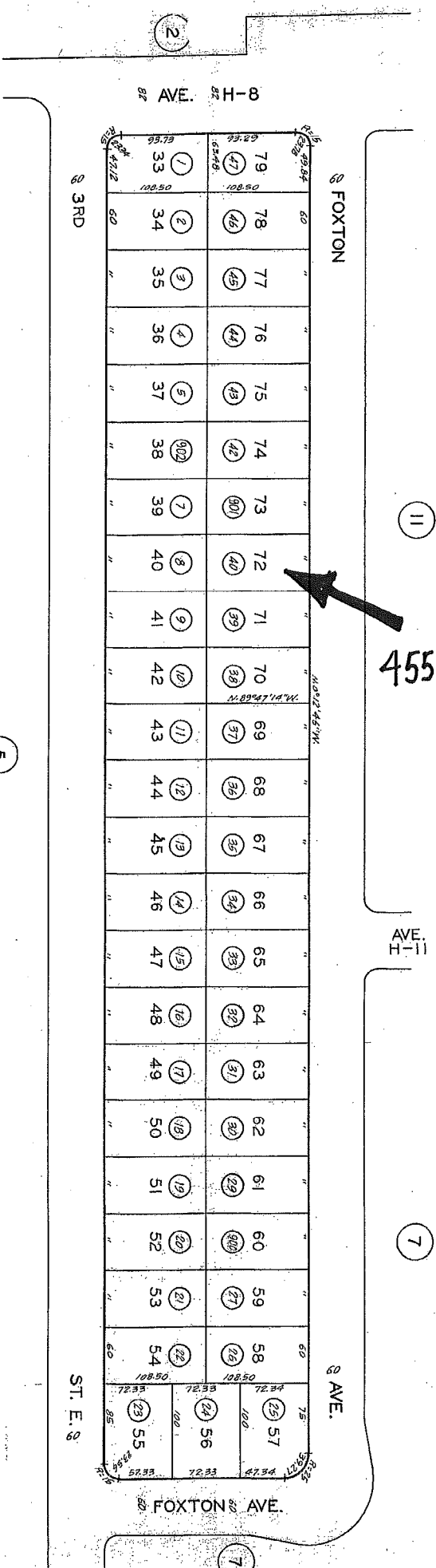


2009



45539 Foxton



ALL 600 SERIES PARCELS ON THIS PAGE ARE ASSESSED TO THE INCORPORATED REDEVELOPMENT AGENCY, UNLESS OTHERWISE NOTED

5438

FROM PREVIOUS ASSESSMENT SEE: 3143 - 21 & 23

TRACT NO. 22808 M.B. 601-74-78