

**CUP 05-10  
VICINITY MAP**

SCALE: 1" = 200'

# TRACT No. 53102-1

SHEET 2 OF 3 SHEETS

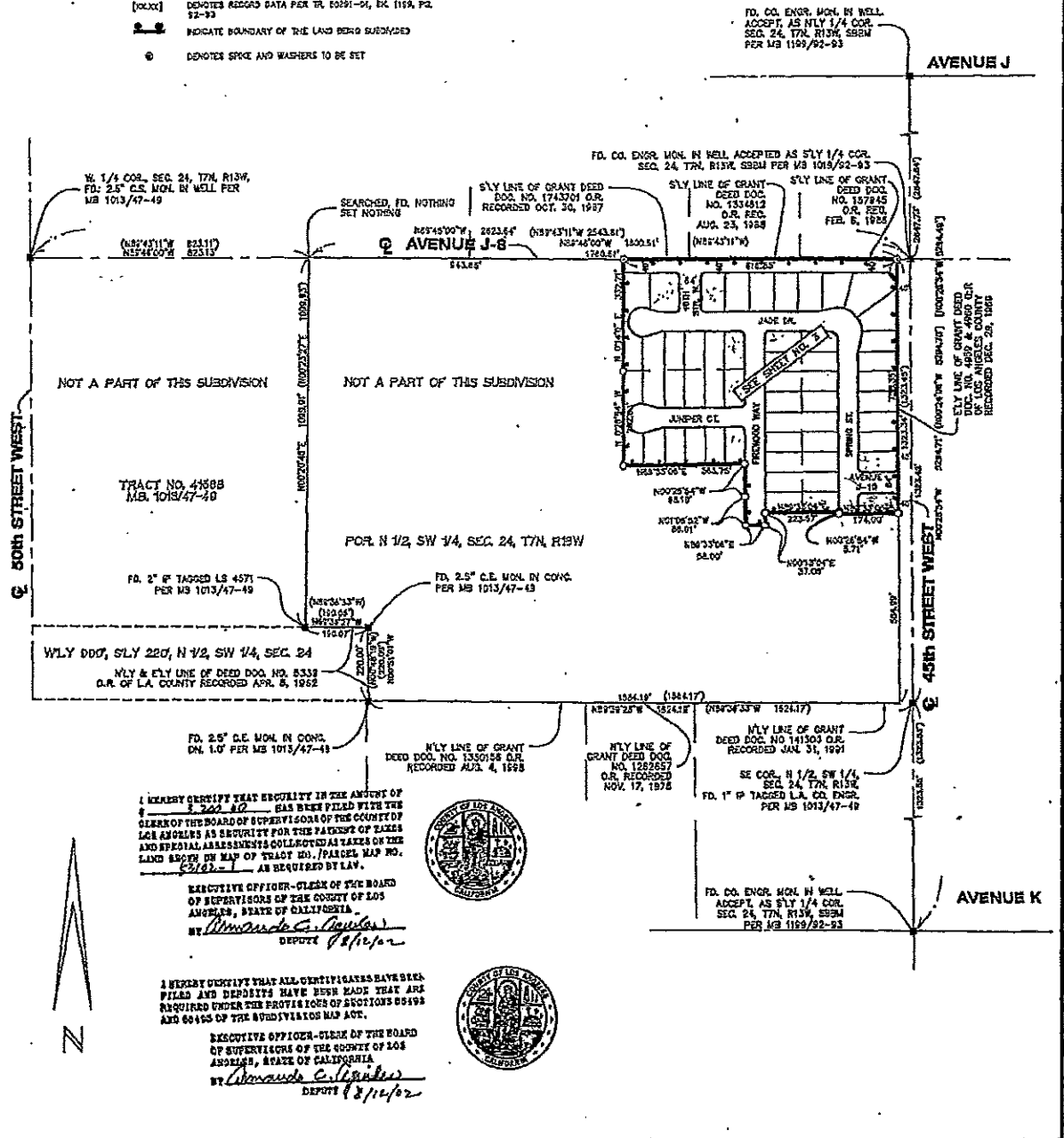
IN THE CITY OF LANCASTER, COUNTY OF LOS ANGELES,  
STATE OF CALIFORNIA

54 LOTS      CROUSE/BEERS & ASSOCIATES, INC.  
DOUGLAS N. CROUSE      R.C.E. 23796      13.10 ACRES

## SURVEY DETAIL AND INDEX MAP

### ENGINEER'S NOTES.

- DENOTES FOUND MONUMENTS AS NOTED
- DENOTES SET 2 3/8" O.D. IRON PIPE TO BE SET
- 1" LP. 15' LONG FLUSH TAGGED R.C.E. 23796 TO BE SET AT ALL NEAR LOT CORNERS UNLESS OTHERWISE NOTED
- LEAD & TAGG. TAGGED R.C.E. 23796, TO BE SET IN THE TOP OF CURB AT THE POINT PROLONGATION OF ALL SIDE LOT LINES
- (COUN) DENOTES RECORD DATA PER TR. 41808, BK. 1013, PG. 47-49
- (COUN) DENOTES RECORD DATA PER TR. 50291-04, BK. 1159, PG. 52-53
- — — INDICATE BOUNDARY OF THE LAND BEING SUBDIVIDED
- ⊙ DENOTES SPIKE AND WASHERS TO BE SET



I HEREBY CERTIFY THAT SECURITY IN THE AMOUNT OF \$ 200.00 HAS BEEN FILED WITH THE CLERK OF THE BOARD OF SUPERVISORS OF THE COUNTY OF LOS ANGELES AS SECURITY FOR THE PAYMENT OF TAXES AND SPECIAL ASSESSMENTS COLLECTED ON THE LAND SHOWN ON MAP OF TRACT NO. / PARCEL MAP NO. 53102-1 AS REQUIRED BY LAW.

EXECUTIVE OFFICER-CLERK OF THE BOARD OF SUPERVISORS OF THE COUNTY OF LOS ANGELES, STATE OF CALIFORNIA  
 BY *Armando C. Aguilar*  
 DEPUTY 8/12/02



I HEREBY CERTIFY THAT ALL CERTIFICATES HAVE BEEN FILED AND DEPOSITS HAVE BEEN MADE THAT ARE REQUIRED UNDER THE PROVISIONS OF SECTIONS 66199 AND 66445 OF THE VEHICLES MAN ACT.

EXECUTIVE OFFICER-CLERK OF THE BOARD OF SUPERVISORS OF THE COUNTY OF LOS ANGELES, STATE OF CALIFORNIA  
 BY *Armando C. Aguilar*  
 DEPUTY 8/12/02

