

EXHIBIT A
ACCEPTANCE OF IMPROVEMENTS
LANCASTER LANDSCAPE MAINTENANCE DISTRICT NO. 1
January 11, 2011

PROJECT NUMBER	LOCATION	DEVELOPER	1ST YEAR MAINTENANCE COST	DATE OF COUNCIL APPROVED	RESOLUTION NO. INITIATING PROCEEDINGS FOR ANNEXATION INTO LMD	RESOLUTION NO. DECLARING ITS INTENTION TO ANNEX TO TERRITORY
TR 060241	Southwest corner of 30th Street West and Jackman St	Beazer Homes Holdings Corp	\$6,975.36	01/11/2011	06-48	06-49
TOTAL:			\$6,975.36			

SCALE 1" = 200'

SHEET 3 OF 6 SHEETS

VESTING TRACT MAP NO. 60241

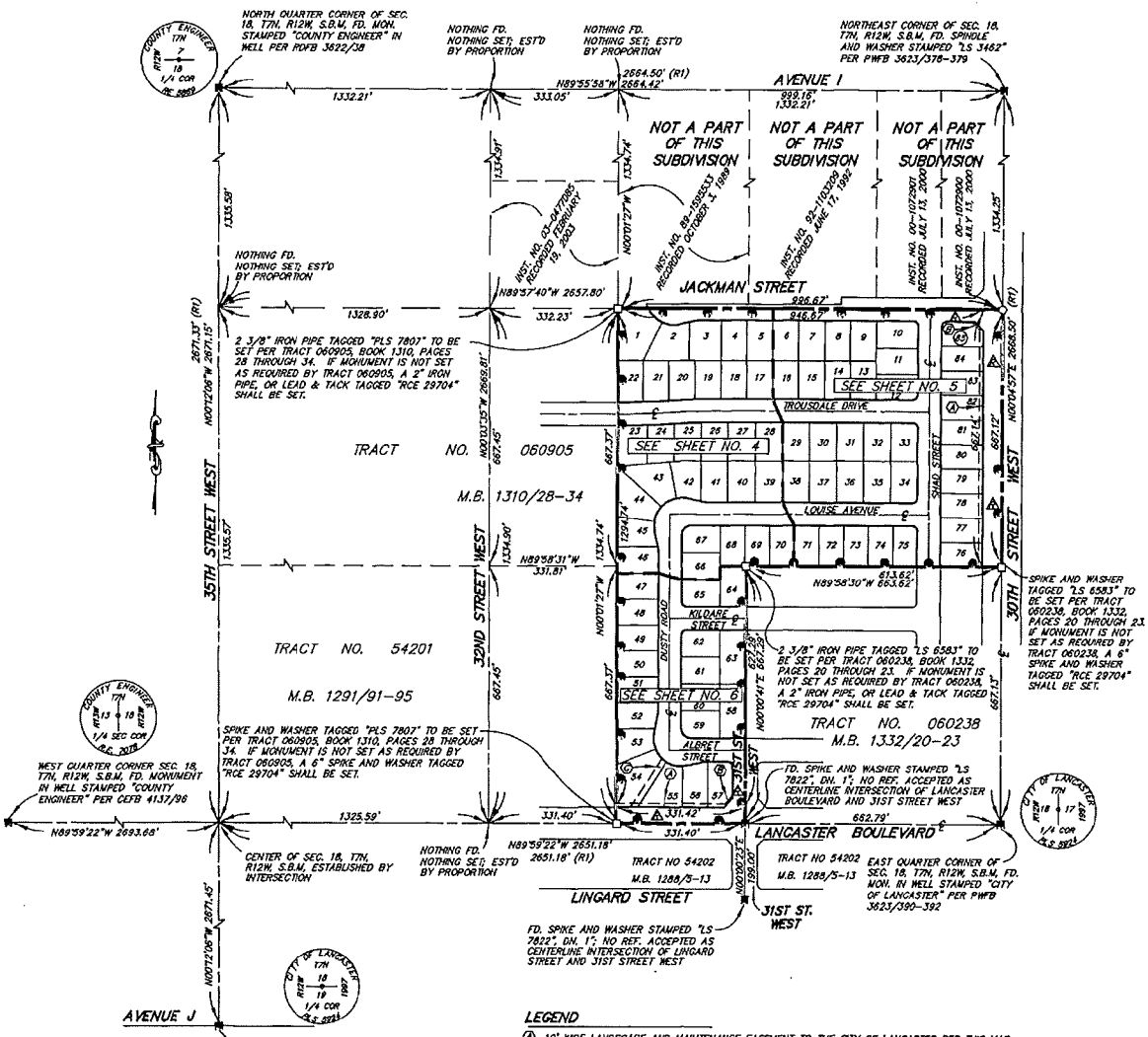
IN THE CITY OF LANCASTER, COUNTY OF LOS ANGELES,
STATE OF CALIFORNIA

85 LOTS

BRUIN ENGINEERING CO.
DENNIS J. SLOAN, RCE 29704

20.34 ACRES

SURVEY DETAIL AND INDEX MAP



LEGEND

- ① 10' WIDE LANDSCAPE AND MAINTENANCE EASEMENT TO THE CITY OF LANCASTER PER THIS MAP
- ② 5' WIDE LANDSCAPE AND MAINTENANCE EASEMENT TO THE CITY OF LANCASTER PER THIS MAP
- ③ 15' WIDE STORM DRAIN AND DRAINAGE EASEMENT TO THE CITY OF LANCASTER PER THIS MAP
- △ 2" IRON PIPE, 4" DOWN, TAGGED "R.C.E. 29704" TO BE SET OR LEAD AND TACK, TAGGED "R.C.E. 29704", TO BE SET WHERE 2" IRON PIPE CANNOT BE SET.
- 6" SPIKE AND WASHER, TAGGED "R.C.E. 29704" TO BE SET.
- INDICATES FOUND MONUMENTS AS DESCRIBED.
- MONUMENT TO BE SET BY ADJACENT TRACT AS DESCRIBED.
- SET LEAD AND TACK TAGGED "R.C.E. 29704" ON TOP OF CURB FOR ALL LOT LINE PROLONGATIONS.
- THE BOUNDARY OF THE LAND BEING SUBDIVIDED BY THIS MAP.
- △ RESTRICTED DIRECT VEHICULAR ACCESS RIGHTS DEDICATED TO THE CITY OF LANCASTER PER THIS MAP
- (R1) TRACT MAP NO. 54201 M.B. 1291/91-95