

632 E. JENNER AVE.

3146

25

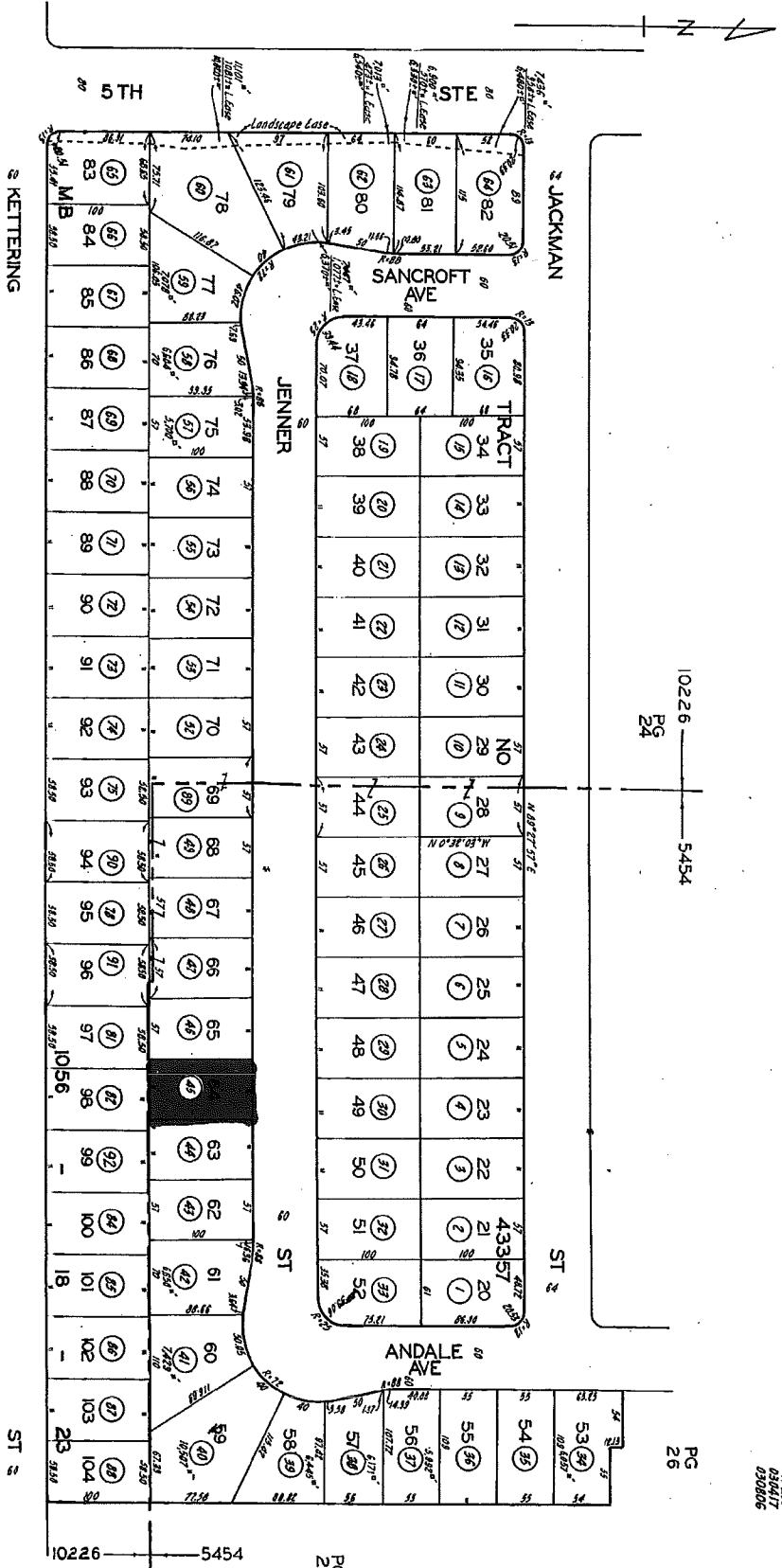
SCALE 1" = 100'

TR 4
10226

OFFICE OF ASSESSOR
COUNTY OF LOS ANGELES

2004

REVISED
05-25-06
05/21/07
300321
2000/2000/03-00-41
2000/2000/03-00-41
2000/2000/03-00-41
030012
030017
030017
030017
030017



PG 2

RODIN ST

PG 3

ANDALE AVE

PG 4

ST 2

PG 23

10226
PG 24
5454

PG 26