

# PARCEL MAP NO. 71763

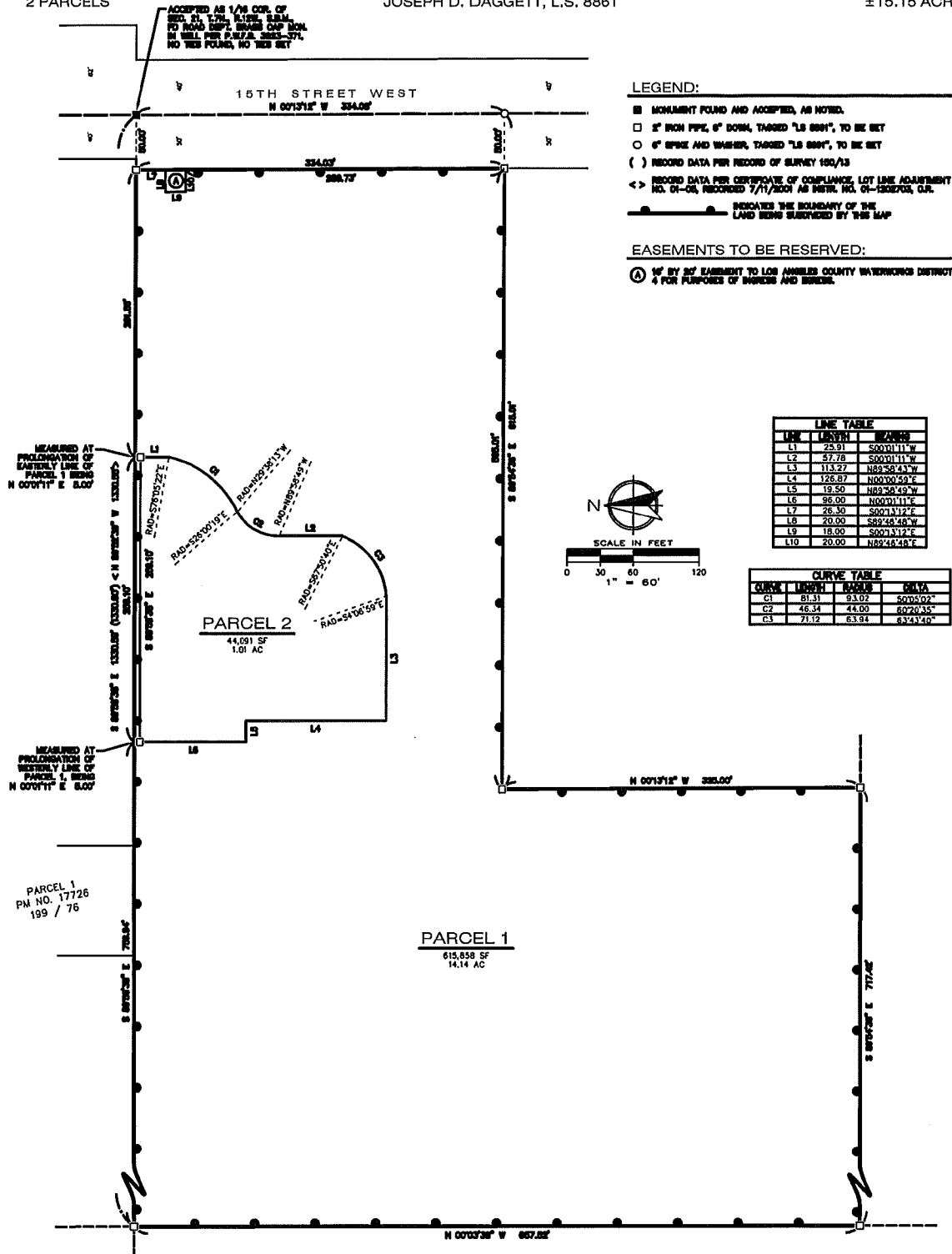
SHEET 3 OF 3 SHEETS

IN THE CITY OF LANCASTER, COUNTY OF LOS ANGELES,  
STATE OF CALIFORNIA

2 PARCELS

JOSEPH D. DAGGETT, L.S. 8861

±15.15 ACRES



LOS ANGELES COUNTY CERTIFICATIONS AND SEALS:

I HEREBY CERTIFY THAT ALL CERTIFICATES HAVE BEEN FILED AND DEPOSITS  
HAVE BEEN MADE THAT ARE REQUIRED UNDER THE PROVISIONS OF  
SECTIONS 94462 AND 94463 OF THE SUBDIVISION MAP ACT.

EXECUTIVE OFFICER, BOARD OF SUPERVISORS OF THE COUNTY OF LOS  
ANGELES, STATE OF CALIFORNIA

I HEREBY CERTIFY THAT SECURITY IN THE AMOUNT OF \$ \_\_\_\_\_  
HAS BEEN FILED WITH THE EXECUTIVE OFFICER, BOARD OF SUPERVISORS OF  
THE COUNTY OF LOS ANGELES AS SECURITY FOR THE PAYMENT OF TAXES  
AND SPECIAL ASSESSMENTS COLLECTED AS TAXES ON THE LAND SHOWN ON  
MAP OF (TYPE TRACT NO. OR PARCEL MAP NO. HERE) AS REQUIRED BY  
LAW.

EXECUTIVE OFFICER, BOARD OF SUPERVISORS OF THE COUNTY OF LOS  
ANGELES, STATE OF CALIFORNIA

BY \_\_\_\_\_ DATED \_\_\_\_\_  
DEPUTY

BY \_\_\_\_\_ DATED \_\_\_\_\_  
DEPUTY