

**EXHIBIT A**  
**ACCEPTANCE OF IMPROVEMENTS**  
**LANCASTER DRAINAGE BENEFIT ASSESSMENT DISTRICT**  
**December 11, 2012**

<b>PROJECT NUMBER</b>	<b>LOCATION</b>	<b>DEVELOPER</b>	<b>1ST YEAR MAINTENANCE COST</b>	<b>DATE OF COUNCIL APPROVED</b>	<b>ANNEXATION NO.</b>	<b>RESOLUTION NO. CONFIRMING THE DIAGRAMS &amp; ASSESSMENTS &amp; ORDERING THE ANNEXATION</b>
Tract No. 53253	Northwest Corner of Avenue M-8 and 30th Street West	Portabella, LP	\$3,200.00	10/12/2004	04-85	04-407
<b>TOTAL:</b>			\$3,200.00			

SCALE: 1" = 200'

SHEET 3 OF 7 SHEETS

# TRACT NO. 53253

IN THE CITY OF LANCASTER, COUNTY OF LOS ANGELES,  
STATE OF CALIFORNIA

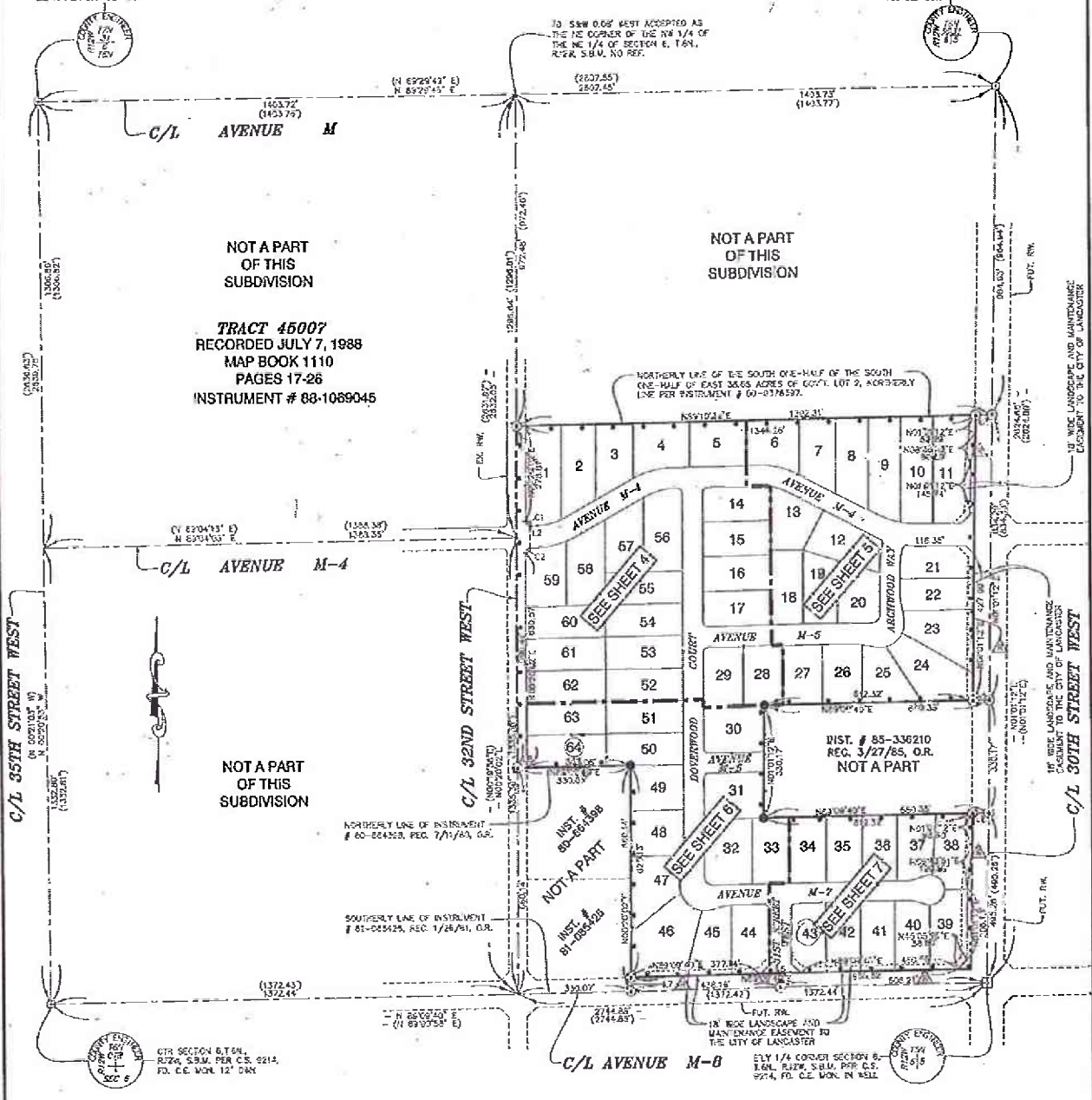
64 LOTS

NARESH C. KAMBOJ R.C.E. 21893

40.27 ACRES

N 1/4 CORNER OF SECTION 8, T.6N., R.12W.,  
S.B.M. PER C.S. 9214, FD. OF MON.

NE CORNER SECTION 6, T.6N.,  
R.12W., S.B.M. PER C.S. 9214,  
FD. C.E. 0311



NOT A PART  
OF THIS  
SUBDIVISION

**TRACT 45007**  
RECORDED JULY 7, 1988  
MAP BOOK 1110  
PAGES 17-26  
INSTRUMENT # 88-1069045

NOT A PART  
OF THIS  
SUBDIVISION

NOT A PART  
OF THIS  
SUBDIVISION

NOT A PART

C/L AVENUE M-8

- LEGEND:**
- INDICATES THE BOUNDARY OF THE LAND BEING SUBDIVIDED BY THIS MAP.
  - S&W TO BE SET
  - FOUND MONUMENTS AS DESCRIBED
  - ( ) INDICATES RECORDED DATA PER TRACT MAP NO. 45007 BC 1110 PP. 17-26 OR UNLESS NOTED OTHERWISE.
  - ▲ RESTRICTED ACCESS RIGHTS DEDICATED TO THE CITY OF LANCASTER
  - SET LEAD AND TACK ON TOP OF BLOCK WALL.

LINE	BEARING	LENGTH
L1	N75°42'42"E	27.01
L2	N00°20'24"E	6.83
L3	N82°13'34"E	16.22
L4	N90°42'00"E	48.03
L5	N60°07'00"E	48.03
L6	N33°42'45"E	125.01
L7	S77°22'00"E	40.31
L8	S83°23'40"E	27.01

CURVE	LENGTH	RADIUS	TANGENT	DELTA
C1	63.71	13.03	11.33	81.6000°
C2	22.13	13.03	12.32	88.4400°