

SCALE: 1" = 200'

SHEET 3 OF 7 SHEETS

TRACT NO. 53253

IN THE CITY OF LANCASTER, COUNTY OF LOS ANGELES,
STATE OF CALIFORNIA

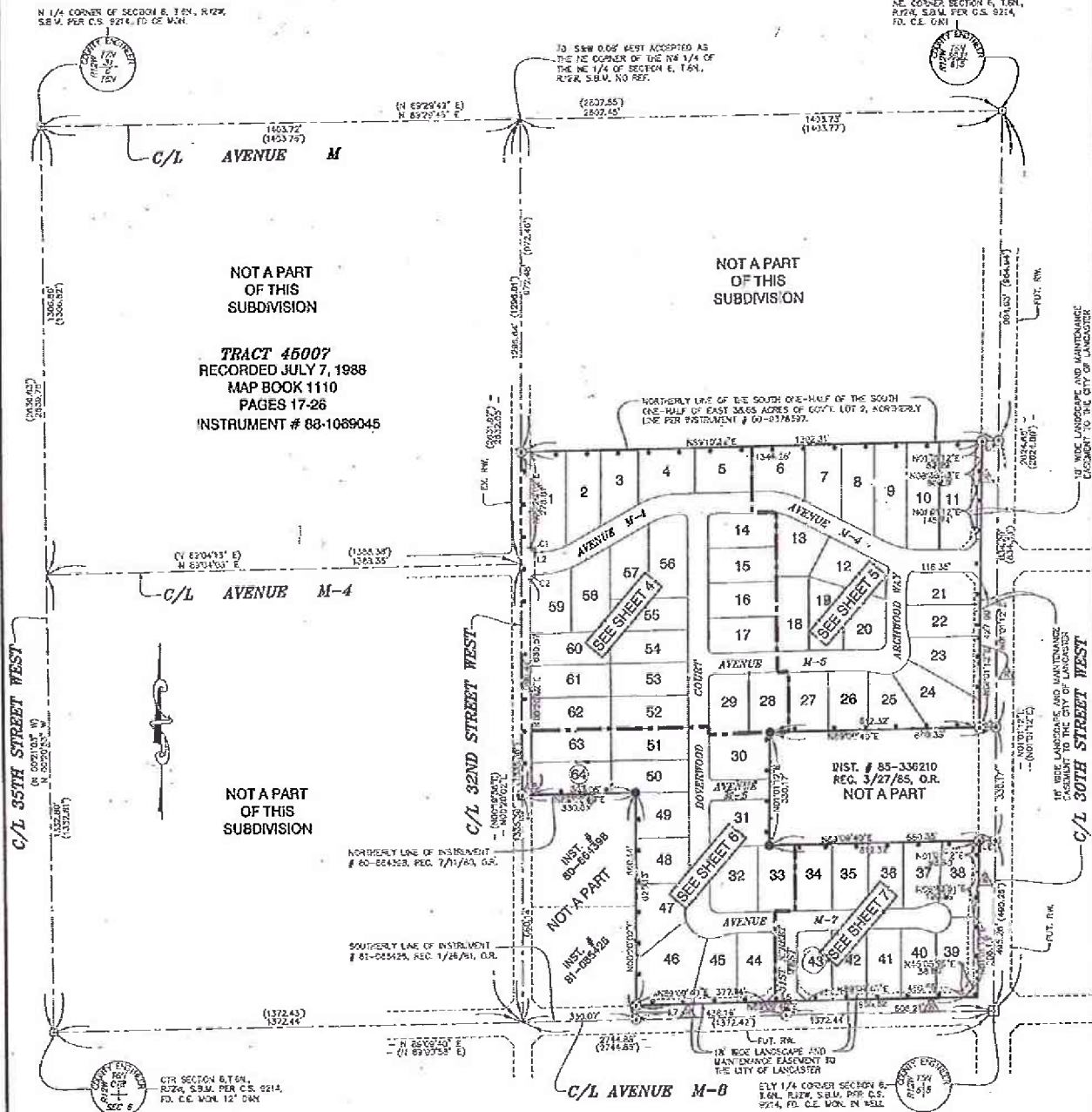
64 LOTS

NARESH C. KAMBOJ R.C.E. 21893

40.27 ACRES

N 1/4 CORNER OF SECTION 6, T.6N., R.12W., S.B.M. PER C.S. 9214, FD. C.E. 0M1.

NE CORNER SECTION 6, T.6N., R.12W., S.B.M. PER C.S. 9214, FD. C.E. 0M1.



LEGEND:

- INDICATES THE BOUNDARY OF THE LAND BEING SUBDIVIDED BY THIS MAP.
- S&W TO BE SET
- FOUND MONUMENTS AS DESCRIBED
- () INDICATES RECORDED DATA PER TRACT MAP NO. 45007 BC 1110 PP. 17-25 OR UNLESS NOTED OTHERWISE.
- ▲ RESTRICTED ACCESS RIGHTS DEDICATED TO THE CITY OF LANCASTER
- SET LEAD AND TACK ON TOP OF BLOCK WALL.

LINE	BEARING	LENGTH
L1	N75°14'22"E	77.01
L2	N00°29'24"E	64.83
L3	N82°13'34"E	16.22
L4	N90°17'40"E	48.03
L5	N60°07'10"E	48.03
L6	N33°44'45"E	126.01
L7	S77°22'02"E	40.31
L8	S83°23'40"E	27.01

CURVE	LENGTH	RADIUS	TANGENT	DELTA
C1	63.71	13.03	11.33	81.6000°
C2	22.13	13.03	12.32	88.4400°