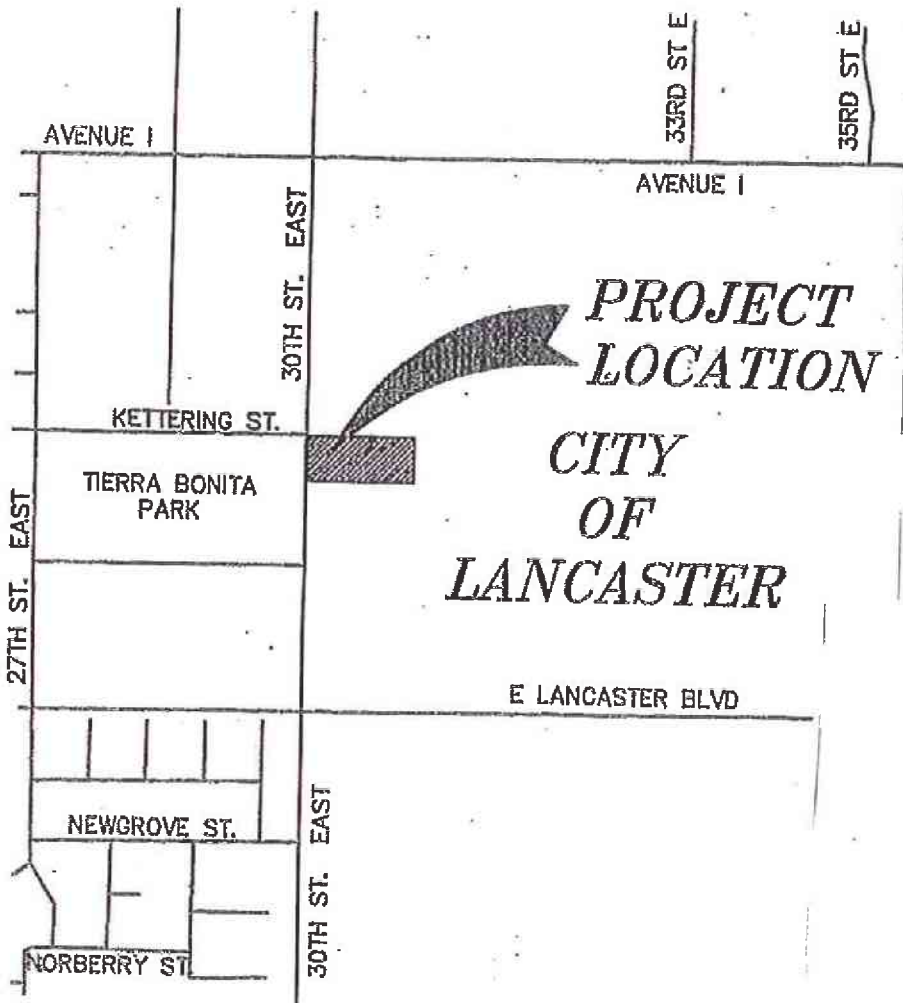


DR 09-64



**PROJECT
LOCATION**
**CITY
OF
LANCASTER**



1307 / 48

SCALE: 1" = 200'

TRACT NO. 53253

IN THE CITY OF LANCASTER, COUNTY OF LOS ANGELES,
STATE OF CALIFORNIA

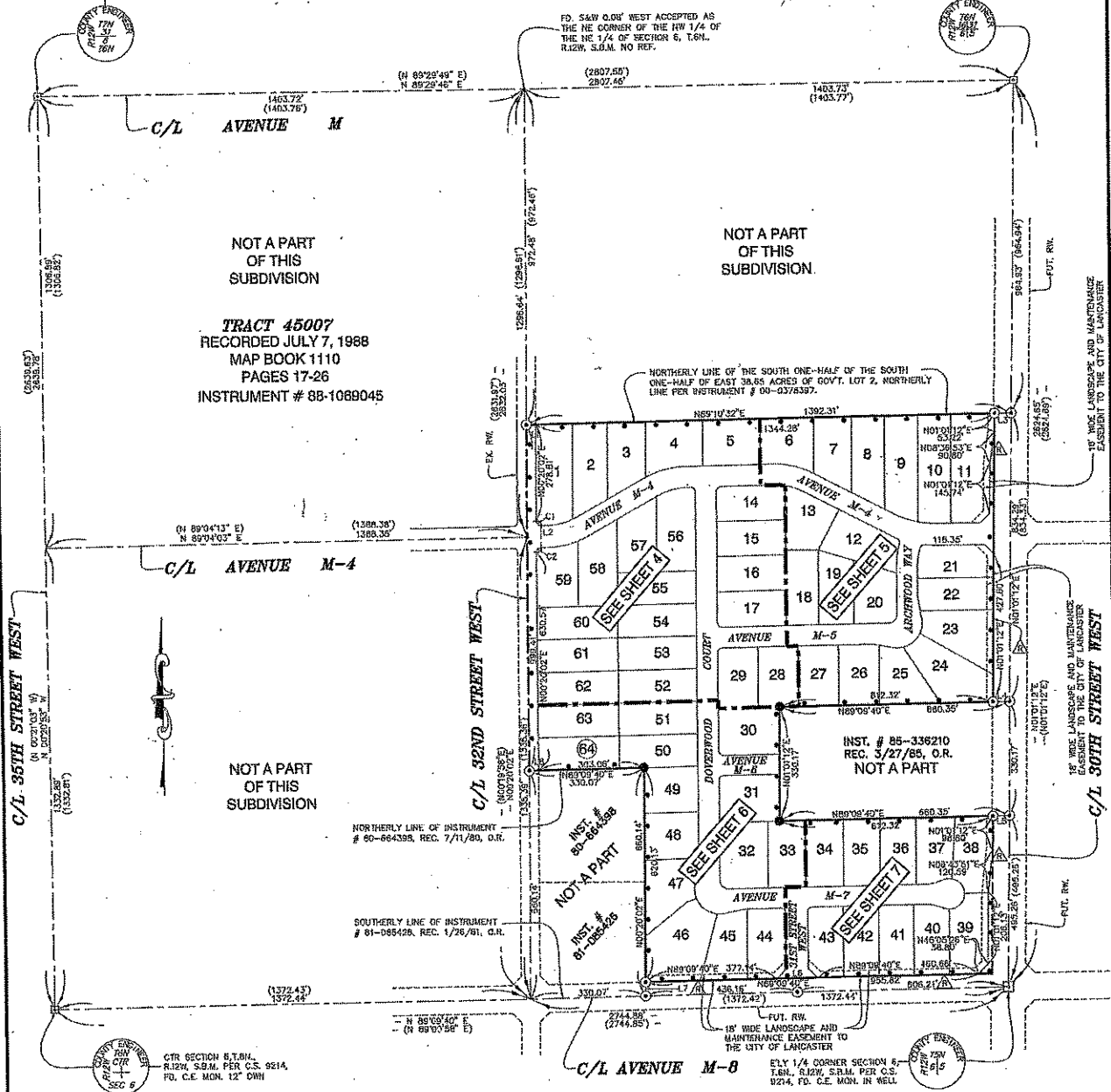
64 LOTS

NARESH C. KAMBOJ R.C.E. 21893

40.27 ACRES

N 1/4 CORNER OF SECTION 6, T.6N., R.12W., S.B.M. PER C.S. 8214, F.D. CE MON.

NE CORNER SECTION 6, T.6N., R.12W., S.B.M. PER C.S. 8214, F.D. C.E. DWN.



LEGEND:

INDICATES THE BOUNDARY OF THE LAND BEING SUBDIVIDED BY THIS MAP.

- ⊙ S&W TO BE SET
- ⊠ FOUND MONUMENT AS DESCRIBED
- () INDICATES RECORDED DATA PER TRACT MAP NO. 45007 BK. 1110 Pgs. 17-26 OR UNLESS NOTED OTHERWISE.
- ▲ RESTRICTED ACCESS RIGHTS DEDICATED TO THE CITY OF LANCASTER
- SET LEAD AND TACK ON TOP OF BLOCK WALL.

LINE	BEARING	LENGTH
L1	N89°10'32"E	27.01
L2	N09°50'54"E	84.03
L3	N89°10'32"E	48.03
L4	N89°09'40"E	48.03
L5	N89°09'40"E	48.03
L6	N89°08'40"E	118.01
L7	N09°20'02"E	40.01
L8	N89°08'40"E	27.01

CURVE	LENGTH	RADIUS	TANGENT	DELTA
C1	20.71	13.00	13.201	91.18 00°
C2	20.18	13.00	12.721	89.44 30°