

**EXHIBIT A**  
**ACCEPTANCE OF IMPROVEMENTS**  
**LANCASTER LANDSCAPE MAINTENANCE DISTRICT NO. 1**  
**January 8, 2013**

PROJECT NUMBER	LOCATION	DEVELOPER	1ST YEAR MAINTENANCE COST	DATE COUNCIL APPROVED	RESOLUTION NO. INITIATING PROCEEDINGS FOR ANNEXATION INTO LMD	RESOLUTION NO. DECLARING ITS INTENTION TO ANNEX TO TERRITORY	RESOLUTION NO CONFIRMING THE DIAGRAM AND ASSESSMENT
Tract No. 060779	Northwest Corner of Avenue J-8 and 32nd Street West	AV Three Homes, LLC	\$1,440.00	11/09/2007	04-429	04-430	04-433
<b>TOTAL:</b>			\$1,440.00				

SCALE: 1"=200'

SHEET 2 OF 3 SHEETS

# TRACT NO. 060779

IN THE CITY OF LANCASTER, COUNTY OF LOS ANGELES  
STATE OF CALIFORNIA

EDWARD L. BOLDEN, JR. RCE 10533

SURVEY DETAIL AND INDEX MAP

4.91 ACRES

18 LOTS

### LEGEND

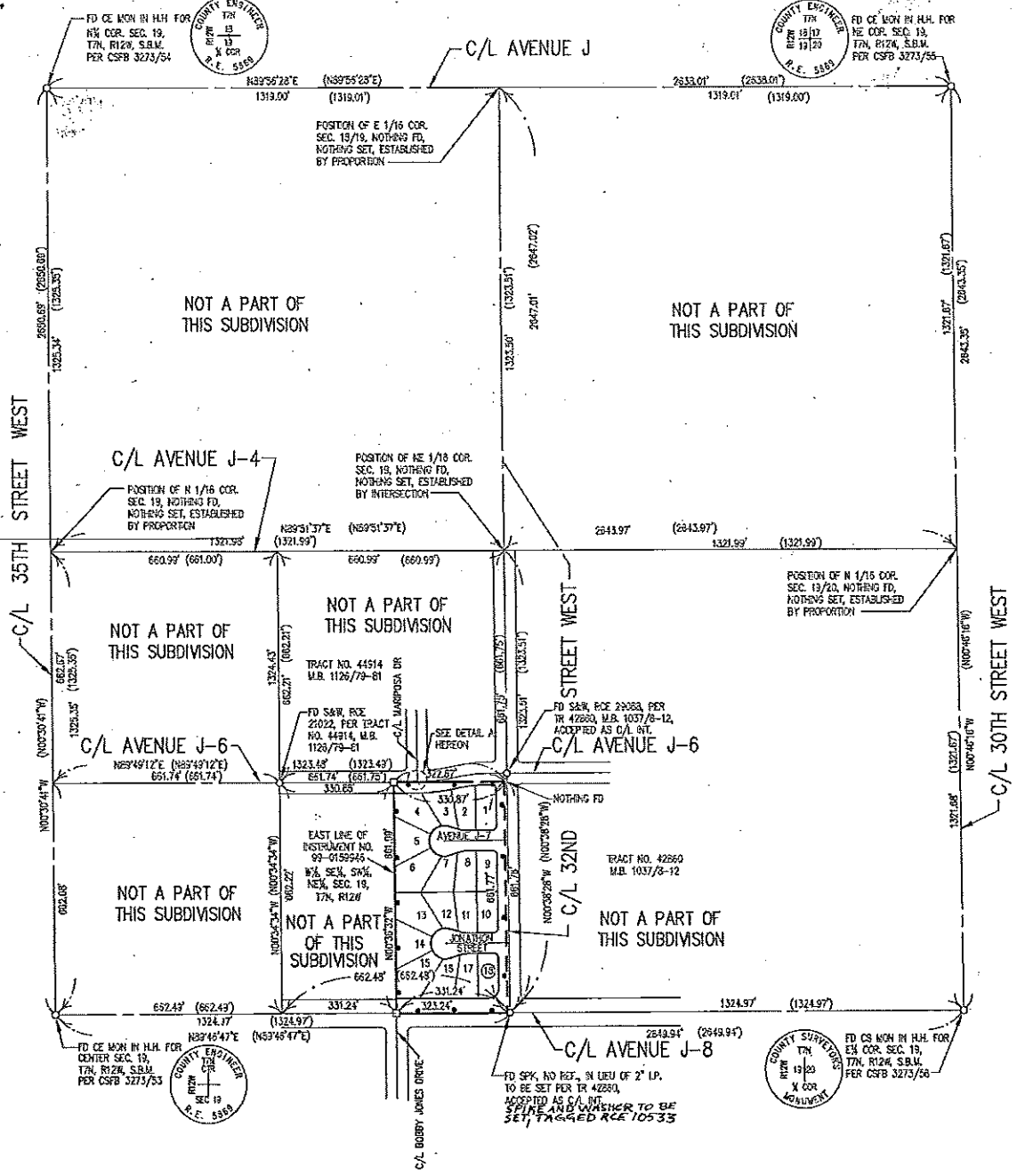
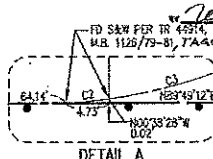
1. BASIS OF BEARINGS IS THE CENTERLINE OF 3RD STREET WEST, BEING N 0°32'24" W AS SHOWN ON TRACT NO. 44514, M.B. 1126/79-81.
2.  $\bigcirc$  INDICATES FOUND MONUMENTS AS INDICATED.
3.  $\square$  INDICATES TRACT BOUNDARY MONUMENTS TO BE SET (2" IRON PIPE, 6" DOWN, TAGGED "RCE 10533", OR 4" SPIKE AND WASHER, TAGGED "RCE 10533" WHERE 2" IRON PIPE CANNOT BE SET).
4.  $\triangle$  INDICATES STREET MONUMENTS TO BE SET. (6" SPIKE AND WASHER TAGGED "RCE 10533")
5. LEAD AND TACK, TAGGED "RCE 10533" TO BE SET IN CURB AT ALL LOT LINES PROJECTED FOR FRONT LOT CORNERS. LEAD AND TACK, TAGGED "RCE 10533" TO BE SET ON TOP OF BLOCK WALL AT REAR CORNERS.
6. SPIKE AND WASHER, TAGGED "RCE 10533", TO BE SET, AT ALL STREET INTERSECTIONS, END OF CURVE(S) AND BEGINNING OF CURVE(S).
7. (1319.01) = RECORD DATA PER TRACT NO. 44514, M.B. 1126/79-81.
8.  $\text{---}$  INDICATES BOUNDARY OF LAND BEING SURVEYED BY THIS MAP.
9.  $\text{---}$  RESTRICTED DIRECT VEHICULAR ACCESS DEDICATED TO THE CITY OF LANCASTER.
10.  $\text{---}$  DASHED LINES MIDWAY STREET RIGHT-OF-WAY INDICATE PROPERTY LINES FOR THE PURPOSE OF COMPUTING REQUIRED AREAS AND BUILDING SETBACKS AS PROVIDED IN LOS ANGELES COUNTY CODE, TITLE 22, AND ARE NOT FOR THE PURPOSE OF CONVEYING.



HEREBY CERTIFY THAT SECURITY IN THE AMOUNT OF \$6,725.00 WAS DEPOSITED WITH THE CLERK OF THE BOARD OF SUPERVISORS OF THE COUNTY OF LOS ANGELES AS SECURITY FOR THE PROPOSED MAP AND SPECIAL ASSURANCE COLLECTED AS TAXES ON THE LAND COVERED BY SAID MAP OF 1-ACT REGISTERED MAP NO. 60779.

WITNESSED BY ME AT LANCASTER, CALIFORNIA, THIS 19th DAY OF FEBRUARY, 1980.

REC'D BY THE COUNTY CLERK OF LOS ANGELES COUNTY



NORTH  
J.N. 4845