

JOINT RESOLUTION OF THE BOARD OF SUPERVISORS OF THE COUNTY OF LOS ANGELES, THE BOARD OF DIRECTORS OF THE LANCASTER CEMETERY DISTRICT, THE BOARD OF TRUSTEES OF THE ANTELOPE VALLEY MOSQUITO AND VECTOR CONTROL DISTRICT, THE BOARD OF DIRECTORS OF SANITATION DISTRICT NO. 14 OF LOS ANGELES COUNTY, THE BOARD OF DIRECTORS OF THE ANTELOPE VALLEY RESOURCE CONSERVATION DISTRICT, THE CITY COUNCIL OF THE CITY OF LANCASTER, AND THE BOARD OF DIRECTORS OF THE ANTELOPE VALLEY-EAST KERN WATER AGENCY APPROVING AND ACCEPTING THE NEGOTIATED EXCHANGE OF PROPERTY TAX REVENUES RESULTING FROM ANNEXATION OF PROPERTY DESIGNATED AS ANNEXATION 40-147 (4-209), LOCAL AGENCY FORMATION COMMISSION DESIGNATION 2012-12, TO LOS ANGELES COUNTY WATERWORKS DISTRICT NO. 40, ANTELOPE VALLEY

WHEREAS, pursuant to Section 99.01 of the Revenue and Taxation Code, in the case of any jurisdictional change that will result in a special district providing one or more services to an area where those services have not previously been provided by any local agency, the special district and each local agency that receives an apportionment of property tax revenue from the area may negotiate an exchange of property tax revenue generated in the area subject to the jurisdictional change and attributable to those local agencies; and

WHEREAS, the Board of Supervisors of the County of Los Angeles, acting on behalf of Los Angeles County Waterworks District No. 40, Antelope Valley; County of Los Angeles Public Library; and the Consolidated Fire Protection District of Los Angeles County; together with the Board of Directors of the Lancaster Cemetery District, the Board of Trustees of the Antelope Valley Mosquito and Vector Control District, the Board of Directors of Sanitation District No. 14 of Los Angeles County, the Board of Directors of the Antelope Valley Resource Conservation District, the City Council of the City of Lancaster, and the Board of Directors of the Antelope Valley-East Kern Water Agency, have determined that the amount of property tax revenue to be exchanged between their respective agencies as a result of the annexation proposal identified as Annexation 40-147 (4-209) to Los Angeles County Waterworks District No. 40, Antelope Valley, is as set forth:

NOW, THEREFORE, BE IT RESOLVED as follows:

1. The Los Angeles County Waterworks District No. 40, Antelope Valley; County of Los Angeles Public Library; the Consolidated Fire Protection District of Los Angeles County; Lancaster Cemetery District; Antelope Valley Mosquito and Vector Control District; Sanitation District No. 14 of Los Angeles County; Antelope Valley Resource Conservation District; the City of Lancaster; and Antelope Valley-East Kern Water Agency have determined that the amount of property tax revenue to be exchanged between their respective agencies as a result of the annexation proposal identified as Annexation 40-147 (4-209) is approved and accepted.
2. For fiscal years commencing on or after July 1, 2013, or the July 1 after the effective date of this jurisdictional change, whichever is later, the property tax revenue increment generated from the area within Annexation 40-147 (4-209) shall be allocated to the affected agencies as indicated in the enclosed worksheets (Exhibits A through D).
3. No transfer of property tax revenues other than those specified in Paragraph 2 shall be made as a result of Annexation 40-147 (4-209).
4. If at any time after the effective date of this Joint Resolution the calculations used herein to determine initial property tax transfers or the data used to perform those calculations are found to be incorrect, thus producing an improper or inaccurate property tax transfer, the property tax transfer shall be recalculated, the corrected transfer shall be implemented for the next fiscal year, and any amounts of property tax received in excess of that which is proper shall be refunded to the appropriate agency.

PASSED, APPROVED, AND ADOPTED this _____ day of _____, 2013, by the following vote:

AYES:

NOES:

ABSENT:

ABSTAIN:

R. Rex Parris, Mayor
City of Lancaster

ATTEST:

City Clerk

PROPERTY TAX TRANSFER RESOLUTION WORKSHEET

Annexation To: Waterworks District # 40 ANTELOPE VALLEY
 Account No. 047.04
 TRA: 10604
 Effective Date: July 1, 2013
 Annexation Number: 40-147(4-209), LAFCO 2012-12

Waterworks District # 40, Antelope Valley
 Based on their 2009-10 Tax Sharing Ratios

Accnt No. Taxing Agency	(1) Current Tax Share	(2) = (1) / Total Percent	(3) Proposed Dist Share	(4) = (2) * (3) Alloc of Dist Share	(5) Allocation Adjustments	(6) = (1) + (5) New Net Share
1.05 LOS ANGELES COUNTY GENERAL	0.428557910	42.8558%	0.006431286	0.002756178	-0.002796044	0.425761866
1.20 L.A. COUNTY ACCUM CAP OUTLAY	0.000112814	0.0113%	0.006431286	0.000000726	0.000000000	0.000112814
3.01 L.A. COUNTY LIBRARY	0.028853668	2.8854%	0.006431286	0.000185566	-0.000185566	0.028668102
7.30 CONSOL. FIRE PRO.DIST.OF L.A.CO.	0.173526804	17.3527%	0.006431286	0.001116001	-0.001116001	0.172410803
7.31 L A C FIRE-FFW	0.006085884	0.6086%	0.006431286	0.000039140	0.000000000	0.006085884
53.30 LANCASTER CEMETERY DISTRICT	0.001580304	0.1580%	0.006431286	0.000010163	-0.000010163	0.001570141
61.05 ANTELOPE VLY MOSQ & VECTOR CONTR	0.001989171	0.1989%	0.006431286	0.000012793	-0.000012793	0.001976378
66.45 CO SANIT DIST NO 14 OPERATING	0.030263620	3.0264%	0.006431286	0.000194634	-0.000194634	0.030068986
68.05 ANTELOPE VY RESOURCE CONSER DIST	0.000935183	0.0935%	0.006431286	0.000006014	-0.000006014	0.000929169
186.01 CITY-LANCASTER TD #1 RP 6	0.067588245	6.7588%	0.006431286	0.000434679	-0.000434679	0.067153566
300.10 ANTELOPE VY -EAST KERN WATER AGY	0.018959357	1.8959%	0.006431286	0.000121933	-0.000121933	0.018837424
400.00 EDUCATIONAL REV AUGMENTATION FD	0.000000000	0.0000%	0.006431286	0.000000000	Exempt	0.000000000
400.01 EDUCATIONAL AUG FD IMPOUND	0.000000000	0.0000%	0.006431286	0.000000000	Exempt	0.000000000
400.15 COUNTY SCHOOL SERVICES	0.001399666	0.1400%	0.006431286	0.000009002	Exempt	0.001399666
400.21 CHILDREN'S INSTIL TUITION FUND	0.002777854	0.2778%	0.006431286	0.000017865	Exempt	0.002777854
464.01 EASTSIDE UNION SCHOOL DISTRICT	0.054909473	5.4909%	0.006431286	0.000353139	Exempt	0.054909473
464.06 CO.SCH.SERV.FD.- EASTSIDE UNION	0.010518859	1.0519%	0.006431286	0.000067650	Exempt	0.010518859
464.07 DEV CTR HDCPD MINOR EASTSIDE UN	0.000833673	0.0834%	0.006431286	0.000005362	Exempt	0.000833673
717.02 ANTELOPE VALLEY UNION HIGH SCH.	0.096601814	9.6602%	0.006431286	0.000621274	Exempt	0.096601814
717.06 CO.SCH.SERV.FD.- ANTELOPE VALLEY	0.000354947	0.0355%	0.006431286	0.000002283	Exempt	0.000354947
717.07 ANTELOPE VY.UN.HI.-ELEM SCH FD.	0.047327064	4.7327%	0.006431286	0.000304374	Exempt	0.047327064
792.04 ANTELOPE VY.JT. COMMUNITY COLL.	0.026823690	2.6824%	0.006431286	0.000172511	Exempt	0.026823690
047.04 Waterworks Dist # 40 ANTELOPE VALLEY	0.000000000	0.0000%	0.006431286	0.000000000	0.000000000	0.004877828
Total	1.000000000	100.0000%	0.006431286	0.006431286	-0.004877828	1.000000000

(1) Current share as reflected in the Auditor's ATI distribution in AF 49. Must total 1.000000000.
 (2) Must total 100%.
 (3) Weighted average waterworks district share as verified by Auditor.
 (4) Must total share reflected in Column (3).
 (5) Reflects exemption for school entities and County general fund obligation for debt service and FFW.
 (6) Final share distributions to be reflected in tax transfer resolution.

PROPERTY TAX TRANSFER RESOLUTION WORKSHEET

Annexation To: Waterworks District # 40 - ACO FUND
 Account No. 51.75
 TRA: 10604
 Effective Date: July 1, 2013
 Annexation Number: 40-147(4-209), LAFCO 2012-12

Waterworks District # 40, ACO FUND
 Based on their 2009-10 Tax Sharing Ratios

Accnt No.	(1) Current Tax Share	(2) = (1) / Total Percent	(3) Proposed Dist Share	(4) = (2) * (3) Alloc of Dist Share	(5) Allocation Adjustments	(6) = (1) + (5) New Net Share
1.05 LOS ANGELES COUNTY GENERAL	0.425761866	42.5762%	0.006402931	0.002726124	-0.002765814	0.422996052
1.20 L.A. COUNTY ACCUM CAP OUTLAY	0.000112814	0.0113%	0.006402931	0.000000722	0.000000000	0.000112814
3.01 L.A. COUNTY LIBRARY	0.028668102	2.8668%	0.006402931	0.000183560	-0.000183560	0.028484542
7.30 CONSOL. FIRE PRO.DIST.OF L.A.CO.	0.172410803	17.2411%	0.006402931	0.001103934	-0.001103934	0.171306869
7.31 L A C FIRE-FFW	0.006085884	0.6086%	0.006402931	0.000038967	0.000000000	0.006085884
47.04 WATERWORKS DIST #40 - ANTELOPE VALLE'	0.004877828	0.4878%	0.006402931	0.000031232	-0.000031232	0.004846596
53.30 LANCASTER CEMETERY DISTRICT	0.001570141	0.1570%	0.006402931	0.000010054	-0.000010054	0.001560087
61.05 ANTELOPE VLY MOSQ & VECTOR CONTR	0.001976378	0.1976%	0.006402931	0.000012655	-0.000012655	0.001963723
66.45 CO SANIT DIST NO 14 OPERATING	0.030068986	3.0069%	0.006402931	0.000192530	-0.000192530	0.029876456
68.05 ANTELOPE VY RESOURCE CONSER DIST	0.000929169	0.0929%	0.006402931	0.000005949	-0.000005949	0.000923219
186.01 CITY-LANCASTER TD #1 RP 6	0.067153566	6.7154%	0.006402931	0.000429980	-0.000429980	0.066723586
300.10 ANTELOPE VY-EAST KERN WATER AGY	0.018837424	1.8837%	0.006402931	0.000120615	-0.000120615	0.018716809
400.00 EDUCATIONAL REV AUGMENTATION FD	0.000000000	0.0000%	0.006402931	0.000000000	Exempt	0.000000000
400.01 EDUCATIONAL AUG FD IMPOUND	0.000000000	0.0000%	0.006402931	0.000000000	Exempt	0.000000000
400.15 COUNTY SCHOOL SERVICES	0.001399666	0.1400%	0.006402931	0.000008962	Exempt	0.001399666
400.21 CHILDREN'S INSTIL TUITION FUND	0.002777854	0.2778%	0.006402931	0.000017786	Exempt	0.002777854
464.01 EASTSIDE UNION SCHOOL DISTRICT	0.054909473	5.4909%	0.006402931	0.000351582	Exempt	0.054909473
464.06 CO.SCH.SERV.FD.-EASTSIDE UNION	0.010518859	1.0519%	0.006402931	0.000067352	Exempt	0.010518859
464.07 DEV CTR HDCCPD MINOR EASTSIDE UN	0.000833673	0.0834%	0.006402931	0.000005338	Exempt	0.000833673
717.02 ANTELOPE VALLEY UNION HIGH SCH.	0.096601814	9.6602%	0.006402931	0.000618535	Exempt	0.096601814
717.06 CO.SCH.SERV.FD.- ANTELOPE VALLEY	0.000354947	0.0355%	0.006402931	0.000002273	Exempt	0.000354947
717.08 ANTELOPE VY.UN.HI.-K.P.S.-ELEM	0.047327064	4.7327%	0.006402931	0.000303032	Exempt	0.047327064
792.04 ANTELOPE VY.JT. COMMUNITY COLL.	0.026823690	2.6824%	0.006402931	0.000171750	Exempt	0.026823690
051.75 Waterworks Dist # 40 ACO FUND	0.000000000	0.0000%	0.006402931	0.000000000	0.000000000	0.004856322
Total	1.000000000	100.0000%	0.006402931	0.000000000	-0.004856322	1.000000000

(1) Current share as reflected in the Auditor's ATI distribution in AF 49. Must total 1.000000000.
 (2) Must total 100%.
 (3) Weighted average waterworks district share as verified by Auditor.
 (4) Must total share reflected in Column (3).
 (5) Reflects exemption for school entities and County general fund obligation for debt service and FFW.
 (6) Final share distributions to be reflected in tax transfer resolution.

PROPERTY TAX TRANSFER RESOLUTION WORKSHEET

Annexation To: Waterworks District # 40 ANTELOPE VALLEY
 Account No. 047.04
 TRA: 12762
 Effective Date: July 1, 2013
 Annexation Number: 40-147(4-209), LAFCO 2012-12

Waterworks District # 40, Antelope Valley
 Based on their 2009-10 Tax Sharing Ratios

Accnt No.	Taxing Agency	(1) Current Tax Share	(2) = (1) / Total Percent	(3) Proposed Dist Share	(4) = (2) * (3) Alloc of Dist Share	(5) Allocation Adjustments	(6) = (1) + (5) New Net Share
1.05	LOS ANGELES COUNTY GENERAL	0.428557910	42.8558%	0.006431286	0.002756178	-0.002796044	0.425761866
1.20	L.A. COUNTY ACCUM CAP OUTLAY	0.000112814	0.0113%	0.006431286	0.000000726	0.000000000	0.000112814
3.01	L.A. COUNTY LIBRARY	0.028853668	2.8854%	0.006431286	0.000185566	-0.000185566	0.028668102
7.30	CONSOL. FIRE PRO.DIST.OF L.A.CO.	0.173526804	17.3527%	0.006431286	0.001116001	-0.001116001	0.172410803
7.31	L A C FIRE-FFW	0.006085884	0.6086%	0.006431286	0.000039140	0.000000000	0.006085884
53.30	LANCASTER CEMETERY DISTRICT	0.001580304	0.1580%	0.006431286	0.000010163	-0.000010163	0.001570141
61.05	ANTELOPE VLY MOSQ & VECTOR CONTR	0.001989171	0.1989%	0.006431286	0.000012793	-0.000012793	0.001976378
66.45	CO SANIT DIST NO 14 OPERATING	0.030263620	3.0264%	0.006431286	0.000194634	-0.000194634	0.030068986
68.05	ANTELOPE VY RESOURCE CONSER DIST	0.000935183	0.0935%	0.006431286	0.000006014	-0.000006014	0.000929169
186.01	CITY-LANCASTER TD #1 RP 6	0.067588245	6.7588%	0.006431286	0.000434679	-0.000434679	0.067153566
300.10	ANTELOPE VY.-EAST KERN WATER AGY	0.018959357	1.8959%	0.006431286	0.000121933	-0.000121933	0.018837424
400.00	EDUCATIONAL REV AUGMENTATION FD	0.000000000	0.0000%	0.006431286	0.000000000	Exempt	0.000000000
400.01	EDUCATIONAL AUG FD IMPOUND	0.000000000	0.0000%	0.006431286	0.000000000	Exempt	0.000000000
400.15	COUNTY SCHOOL SERVICES	0.001399666	0.1400%	0.006431286	0.000009002	Exempt	0.001399666
400.21	CHILDREN'S INSTIL TUITION FUND	0.002777854	0.2778%	0.006431286	0.00017865	Exempt	0.002777854
464.01	EASTSIDE UNION SCHOOL DISTRICT	0.054909473	5.4909%	0.006431286	0.000353139	Exempt	0.054909473
464.06	CO.SCH.SERV.FD.- EASTSIDE UNION	0.010518859	1.0519%	0.006431286	0.000067650	Exempt	0.010518859
464.07	DEV CTR HDCPD MINOR EASTSIDE UN	0.000833673	0.0834%	0.006431286	0.000005362	Exempt	0.000833673
717.02	ANTELOPE VALLEY UNION HIGH SCH.	0.096601814	9.6602%	0.006431286	0.000621274	Exempt	0.096601814
717.06	CO.SCH.SERV.FD.- ANTELOPE VALLEY	0.000354947	0.0355%	0.006431286	0.000002283	Exempt	0.000354947
717.07	ANTELOPE VY.UN.HI.-ELEM SCH FD.	0.047327064	4.7327%	0.006431286	0.000304374	Exempt	0.047327064
792.04	ANTELOPE VY.-JT. COMMUNITY COLL.	0.026823690	2.6824%	0.006431286	0.000172511	Exempt	0.026823690
047.04	Waterworks Dist # 40 ANTELOPE VALLEY	0.000000000	0.0000%	0.006431286	0.000000000	0.000000000	0.004877828
Total		1.000000000	100.0000%	0.006431286	0.006431286	-0.004877828	1.000000000

- (1) Current share as reflected in the Auditor's ATI distribution in AF 49. Must total 1.000000000.
- (2) Must total 100%.
- (3) Weighted average waterworks district share as verified by Auditor.
- (4) Must total share reflected in Column (3).
- (5) Reflects exemption for school entities and County general fund obligation for debt service and FFW.
- (6) Final share distributions to be reflected in tax transfer resolution.

PROPERTY TAX TRANSFER RESOLUTION WORKSHEET

Annexation To:
 Account No.
 TRA:
 Effective Date:
 Annexation Number:

Waterworks District # 40 - ACO FUND
 51.75
 12762
 July 1, 2013
 40-147(4-209), LAFCO 2012-12

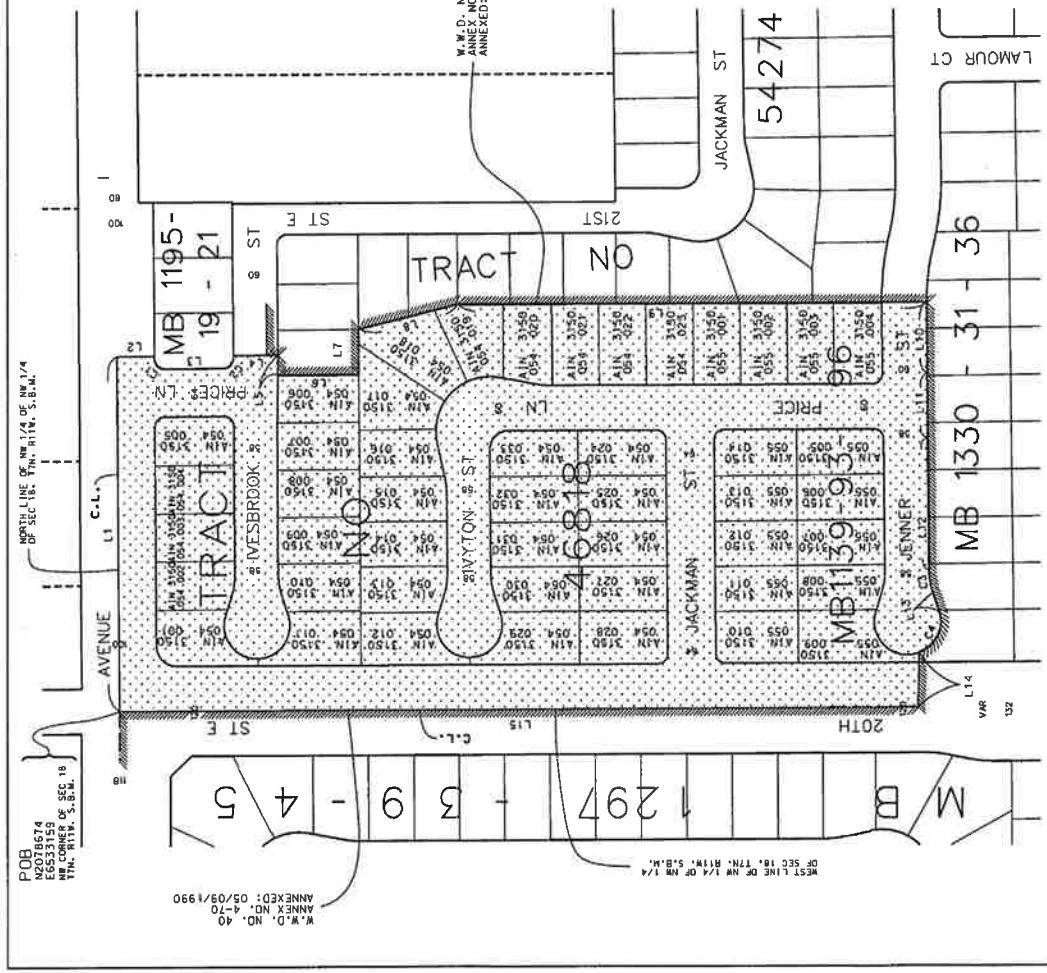
Waterworks District # 40, ACO FUND
 Based on their 2009-10 Tax Sharing Ratios

0.006402931

Accnt No.	(1) Current Tax Share	(2) = (1) / Total Percent	(3) Proposed Dist Share	(4) = (2) * (3) Alloc of Dist Share	(5) Allocation Adjustments	(6) = (1) + (5) New Net Share
1.05 LOS ANGELES COUNTY GENERAL	0.425761866	42.5762%	0.006402931	0.002726124	-0.002765814	0.422996052
1.20 L.A. COUNTY ACCUM CAP OUTLAY	0.000112814	0.0113%	0.006402931	0.000000722	0.000000000	0.000112814
3.01 L.A. COUNTY LIBRARY	0.028668102	2.8668%	0.006402931	0.000183560	-0.000183560	0.028484542
7.30 CONSOL. FIRE PRO.DIST.OF L.A.CO.	0.172410803	17.2411%	0.006402931	0.001103934	-0.001103934	0.171306869
7.31 L A C FIRE-FFW	0.006085884	0.6086%	0.006402931	0.000038967	0.000000000	0.006085884
47.04 WATERWORKS DIST #40 - ANTELOPE VALLE'	0.004877828	0.4878%	0.006402931	0.000031232	-0.000031232	0.004846596
53.30 LANCASTER CEMETERY DISTRICT	0.001570141	0.1570%	0.006402931	0.000010054	-0.000010054	0.001560087
61.05 ANTELOPE VLY MOSQ & VECTOR CONTR	0.001976378	0.1976%	0.006402931	0.000012655	-0.000012655	0.001963723
66.45 CO SANIT DIST NO 14 OPERATING	0.030068986	3.0069%	0.006402931	0.000192530	-0.000192530	0.029876456
68.05 ANTELOPE VY RESOURCE CONSER DIST	0.000929169	0.0929%	0.006402931	0.000005949	-0.000005949	0.000923219
186.01 CITY-LANCASTER TD #1 RP 6	0.067153566	6.7154%	0.006402931	0.000429980	-0.000429980	0.066723586
300.10 ANTELOPE VY -EAST KERN WATER AGY	0.018837424	1.8837%	0.006402931	0.000120615	-0.000120615	0.018716809
400.00 EDUCATIONAL REV AUGMENTATION FD	0.000000000	0.0000%	0.006402931	0.000000000	Exempt	0.000000000
400.01 EDUCATIONAL AUG FD IMPOUND	0.000000000	0.0000%	0.006402931	0.000000000	Exempt	0.000000000
400.15 COUNTY SCHOOL SERVICES	0.001399666	0.1400%	0.006402931	0.000008962	Exempt	0.001399666
400.21 CHILDREN'S INSTIL TUITION FUND	0.002777854	0.2778%	0.006402931	0.000017786	Exempt	0.002777854
464.01 EASTSIDE UNION SCHOOL DISTRICT	0.054909473	5.4909%	0.006402931	0.000351582	Exempt	0.054909473
464.06 CO.SCH.SERV.FD.- EASTSIDE UNION	0.010518859	1.0519%	0.006402931	0.000067352	Exempt	0.010518859
464.07 DEV CTR HDCPD MINOR EASTSIDE UN	0.000833673	0.0834%	0.006402931	0.000005338	Exempt	0.000833673
717.02 ANTELOPE VALLEY UNION HIGH SCH.	0.096601814	9.6602%	0.006402931	0.000618535	Exempt	0.096601814
717.06 CO.SCH.SERV.FD.- ANTELOPE VALLEY	0.000354947	0.0355%	0.006402931	0.000002273	Exempt	0.000354947
717.08 ANTELOPE VY.UNI.HI.-K.P.S.-ELEM	0.047327064	4.7327%	0.006402931	0.000303032	Exempt	0.047327064
792.04 ANTELOPE VY.JT. COMMUNITY COLL.	0.026823690	2.6824%	0.006402931	0.000171750	Exempt	0.026823690
051.75 Waterworks Dist # 40 ACO FUND	0.000000000	0.0000%	0.006402931	0.000000000	0.000000000	0.004856322
Total	1.000000000	100.0000%	0.006402931	0.006402931	-0.004856322	1.000000000

(1) Current share as reflected in the Auditor's ATI distribution in AF 49. Must total 1.000000000.
 (2) Must total 100%.
 (3) Weighted average waterworks district share as verified by Auditor.
 (4) Must total share reflected in Column (3).
 (5) Reflects exemption for school entities and County general fund obligation for debt service and FFW.
 (6) Final share distributions to be reflected in tax transfer resolution.

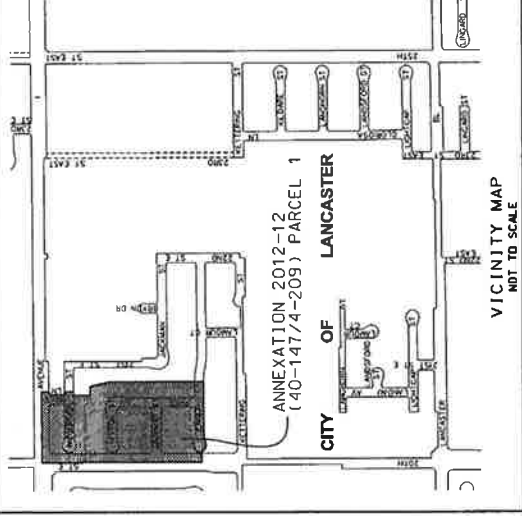
**ANNEXATION NO. 2012-12 (40-147/4-209) TO
LOS ANGELES COUNTY WATERWORKS DISTRICT NO. 40
ANTELOPE VALLEY**



POB
E6533154
E6533159
MB CORNER OF SEC 18
T1N, R11W, S8M, 1/4

W.M.D. NO. 40
ANNEX NO. 4-70
ANNEXED: 05/09/1990

W.M.D. NO. 40
ANNEXED: 11/19/2009



No.	Direction	Distance	Delta	Arc	Radius
L1	N 89°14'50"	470.00	90°00'00"	20.42	13.00
L2	S 00°45'10"	50.00	17°00'00"	50.72	83.00
L3	S 00°45'10"	68.00	87°27'28"	87.16	44.00
L4	S 89°53'02"	26.40			
L5	S 89°53'02"	107.29			
L6	S 00°45'10"	135.44			
L7	N 84°05'13"	355.44			
L8	S 00°25'18"	624.74			
L9	S 89°07'27"	82.02			
L10	S 89°07'27"	177.47			
L11	S 89°07'27"	70.00			
L12	S 89°07'27"	1063.70			
L13	S 89°07'27"				
L14	S 89°07'27"				
L15	N 00°29'21"				

Scale: 1" = 100'
Scale: 1" = 100'

PORTION OF SECTION 18, T7N, R11W, S8M.			
LOS ANGELES COUNTY DEPARTMENT OF PUBLIC WORKS			
WATERWORKS DIVISION			
ANNEXATION 2012-12 (40-147/4-209) PARCEL 1			
CITY: LANCASTER	DATE: 04/05/2012	SCALE: 1" = 100'	S.D. 5
PREP. BY: V. L. BANA			
PART NAME: WND 2012-12, PCL 1	W.M.D. NO.: 40	ANNEX. NO.: 4-70	SHEET: 2 OF 5
SPECIAL DIST.: WND 40	3150	AREA: 12.11+ AC	

FOR ASSESSMENT PURPOSES ONLY. THIS DESCRIPTION OF LAND IS NOT A LEGAL PROPERTY DESCRIPTION AS DEFINED IN THE SUBDIVISION MAP ACT AND MAY NOT BE USED AS THE BASIS FOR AN OFFER FOR SALE OF THE LAND DESCRIBED.

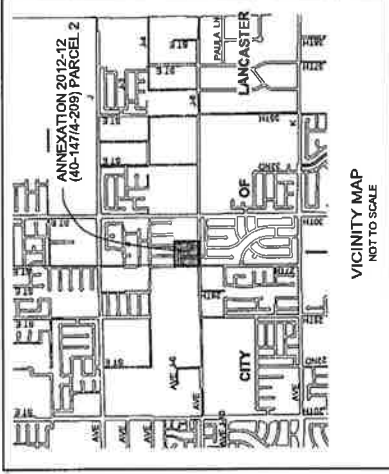
DISCLAIMER
THIS MAP IS BASED UPON INFORMATION FROM THE SUBDIVISION MAP ACT AND MAY NOT BE USED AS THE BASIS FOR AN OFFER FOR SALE OF THE LAND DESCRIBED.

LEGEND:
EXISTING BOUNDARY OF LOS ANGELES COUNTY WATERWORKS DISTRICT NO. 40
C.L. CENTERLINE

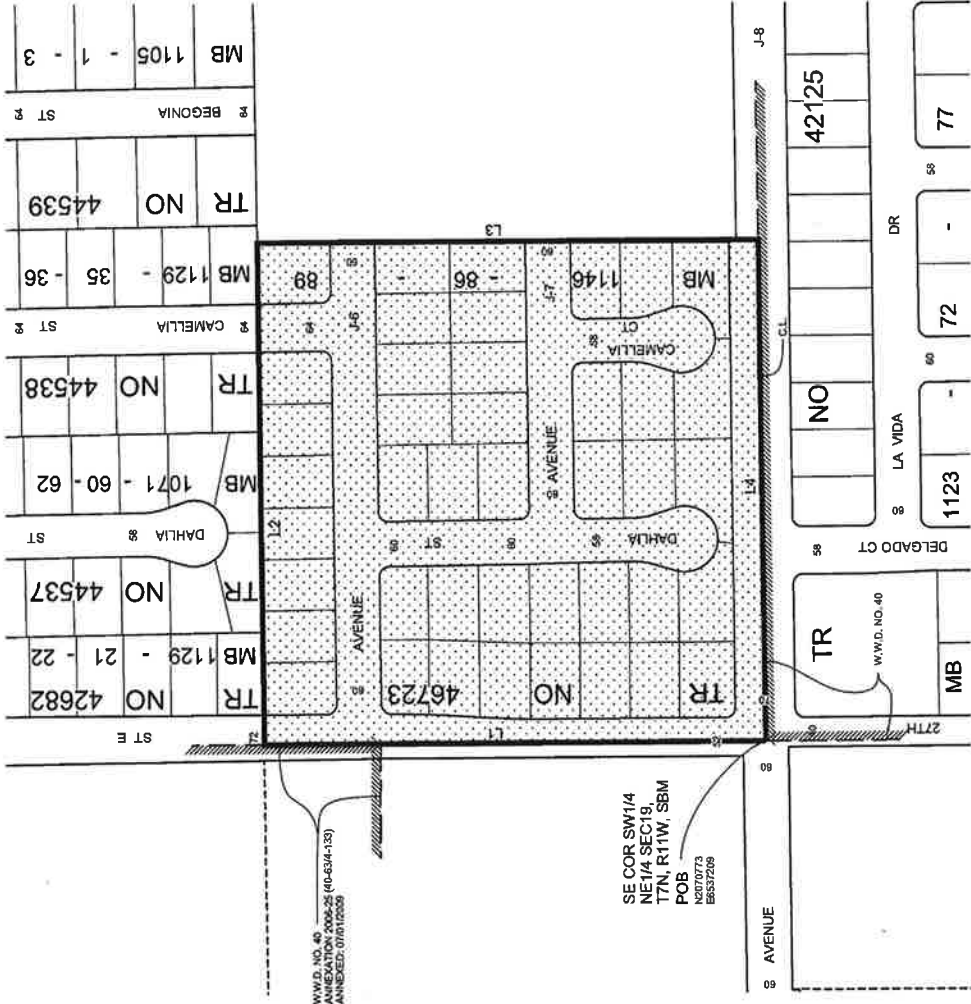
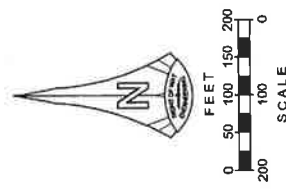
PROPOSED ANNEXATION

DATA CONTAINED IN THIS MAP WAS PRODUCED IN WHOLE OR PART FROM THE LOS ANGELES COUNTY DEPARTMENT OF PUBLIC WORKS' DIGITAL DATABASE.

**ANNEXATION 2012-12 (40-1474-209) TO
LOS ANGELES COUNTY WATERWORKS DISTRICT NO. 40
ANTELOPE VALLEY**



ALIN.	ALIN.
3150 054.001	3150 054.002
3150 054.002	3150 054.003
3150 054.003	3150 054.004
3150 054.004	3150 054.005
3150 054.005	3150 054.006
3150 054.006	3150 054.007
3150 054.007	3150 054.008
3150 054.008	3150 054.009
3150 054.009	3150 054.010
3150 054.010	3150 054.011
3150 054.011	3150 054.012
3150 054.012	3150 054.013
3150 054.013	3150 054.014
3150 054.014	3150 054.015
3150 054.015	3150 054.016
3150 054.016	3150 054.017
3150 054.017	3150 054.018
3150 054.018	3150 054.019
3150 054.019	3150 054.020
3150 054.020	3150 054.021
3150 054.021	3150 054.022



W.W.D. NO. 40
ANNEXATION 2006-25 (40-6314-133)
ANNEXED 07/01/2009

SE COR SW1/4
NE1/4 SEC19,
T7N, R11W, S8M
POB
N3670773
E6537209

LINE DATA

LINE	BEARING	DISTANCE
L1	N 00° 20' 00" W	663.77'
L2	N 88° 58' 13" E	664.49'
L3	S 00° 53' 34" E	664.69'
L4	S 89° 02' 25" W	665.57'

LEGEND

- PROPOSED ANNEXATION
- EXISTING LA CO WATERWORKS DISTRICT NO. 40 BOUNDARY
- CENTERLINE

NOTE:
THIS MAP IS BASED UPON INFORMATION FROM THE COUNTY OF LOS ANGELES RECORDS. IT DOES NOT SHOW EXACT BOUNDARY LOCATIONS WHICH MUST BE DETERMINED BY CURRENT FIELD MEASUREMENTS.
DATA CONTAINED IN THIS MAP WAS PRODUCED IN WHOLE OR PART FROM THE LOS ANGELES COUNTY DEPARTMENT OF PUBLIC WORKS DIGITAL DATABASE.

PORTION OF SEC. 19, T.7N, R.11W, S.8M.

LOS ANGELES COUNTY DEPARTMENT OF PUBLIC WORKS
WATERWORKS DIVISION

ANNEXATION 2012-12 (40-1474-209) PARCEL 2 S.D.5

CITY OF LANCASTER

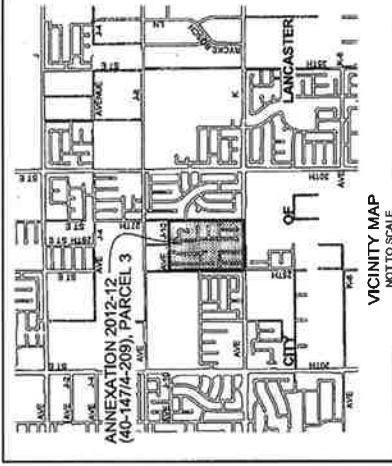
PROJECT NO. 40102012 DATE: 04/10/2012 SCALE: 1" = 100'

PROJECT NAME: FERNANDO SHADIMI / AMUNG TAN

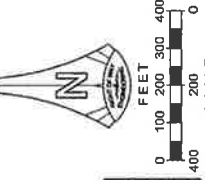
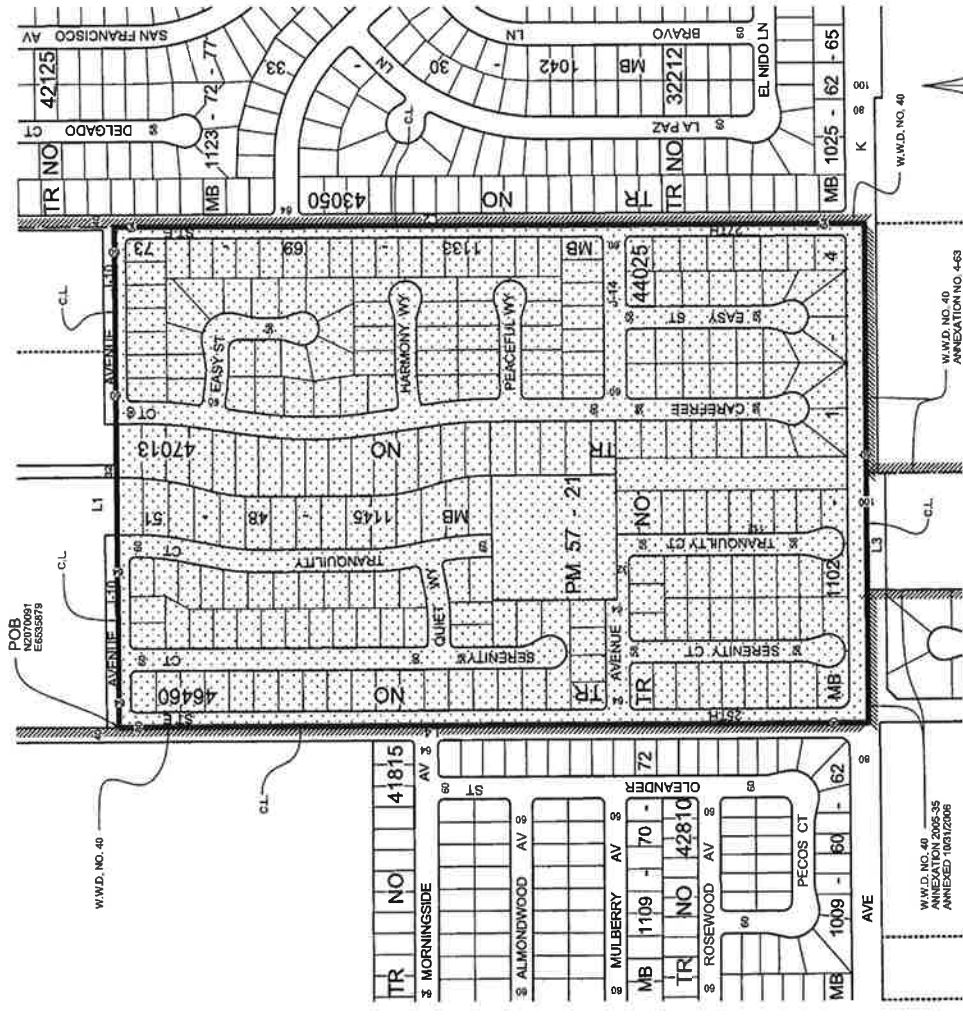
W.W.D. NO. 40 PARCEL 2 H.N. NO.: 394-261

SPECIAL DISTRICT: W.W.D. 40 A.L.B. NO.: 401657/F7 T.G. PAGE: 3 OF 3

**ANNEXATION 2012-12 (40-147/4-209) TO
LOS ANGELES COUNTY WATERWORKS DISTRICT NO. 40
ANTELOPE VALLEY**



ALIN	ALIN	ALIN	ALIN	ALIN	ALIN	ALIN	ALIN
3150 043 001	3150 043 002	3150 043 003	3150 043 004	3150 043 005	3150 043 006	3150 043 007	3150 043 008
3150 043 009	3150 043 010	3150 043 011	3150 043 012	3150 043 013	3150 043 014	3150 043 015	3150 043 016
3150 043 017	3150 043 018	3150 043 019	3150 043 020	3150 043 021	3150 043 022	3150 043 023	3150 043 024
3150 043 025	3150 043 026	3150 043 027	3150 043 028	3150 043 029	3150 043 030	3150 043 031	3150 043 032
3150 043 033	3150 043 034	3150 043 035	3150 043 036	3150 043 037	3150 043 038	3150 043 039	3150 043 040
3150 043 041	3150 043 042	3150 043 043	3150 043 044	3150 043 045	3150 043 046	3150 043 047	3150 043 048
3150 043 049	3150 043 050	3150 043 051	3150 043 052	3150 043 053	3150 043 054	3150 043 055	3150 043 056
3150 043 057	3150 043 058	3150 043 059	3150 043 060	3150 043 061	3150 043 062	3150 043 063	3150 043 064
3150 043 065	3150 043 066	3150 043 067	3150 043 068	3150 043 069	3150 043 070	3150 043 071	3150 043 072
3150 043 073	3150 043 074	3150 043 075	3150 043 076	3150 043 077	3150 043 078	3150 043 079	3150 043 080
3150 043 081	3150 043 082	3150 043 083	3150 043 084	3150 043 085	3150 043 086	3150 043 087	3150 043 088
3150 043 089	3150 043 090	3150 043 091	3150 043 092	3150 043 093	3150 043 094	3150 043 095	3150 043 096
3150 043 097	3150 043 098	3150 043 099	3150 043 100	3150 043 101	3150 043 102	3150 043 103	3150 043 104
3150 043 105	3150 043 106	3150 043 107	3150 043 108	3150 043 109	3150 043 110	3150 043 111	3150 043 112
3150 043 113	3150 043 114	3150 043 115	3150 043 116	3150 043 117	3150 043 118	3150 043 119	3150 043 120
3150 043 121	3150 043 122	3150 043 123	3150 043 124	3150 043 125	3150 043 126	3150 043 127	3150 043 128
3150 043 129	3150 043 130	3150 043 131	3150 043 132	3150 043 133	3150 043 134	3150 043 135	3150 043 136
3150 043 137	3150 043 138	3150 043 139	3150 043 140	3150 043 141	3150 043 142	3150 043 143	3150 043 144
3150 043 145	3150 043 146	3150 043 147	3150 043 148	3150 043 149	3150 043 150	3150 043 151	3150 043 152
3150 043 153	3150 043 154	3150 043 155	3150 043 156	3150 043 157	3150 043 158	3150 043 159	3150 043 160
3150 043 161	3150 043 162	3150 043 163	3150 043 164	3150 043 165	3150 043 166	3150 043 167	3150 043 168
3150 043 169	3150 043 170	3150 043 171	3150 043 172	3150 043 173	3150 043 174	3150 043 175	3150 043 176
3150 043 177	3150 043 178	3150 043 179	3150 043 180	3150 043 181	3150 043 182	3150 043 183	3150 043 184
3150 043 185	3150 043 186	3150 043 187	3150 043 188	3150 043 189	3150 043 190	3150 043 191	3150 043 192
3150 043 193	3150 043 194	3150 043 195	3150 043 196	3150 043 197	3150 043 198	3150 043 199	3150 043 200



LINE	BEARING	DISTANCE
L1	N 89°25'57" E	133.33 FT
L2	S 0°02'23" W	1866.18
L3	S 89°17'24" W	1333.64
L4	N 89°22'13" W	1994.15

LEGEND

- PROPOSED ANNEXATION
- EXISTING LA CO WATERWORKS DISTRICT NO. 40 BOUNDARY
- CENTERLINE

NOTE
THIS MAP IS BASED UPON INFORMATION FROM PUBLIC AND QUASIPUBLIC RECORDS. IT DOES NOT CONSTITUTE A SURVEY AND THE DIMENSIONS MUST BE DETERMINED BY CURRENT FIELD MEASUREMENTS.
DATA CONTAINED IN THIS MAP WAS PRODUCED IN WHOLE OR PART FROM THE LOS ANGELES COUNTY DEPARTMENT OF PUBLIC WORKS DIGITAL DATABASE.

PORTION OF SEC. 19, T.7 N. R.11 W. S.B.M.
LOS ANGELES COUNTY DEPARTMENT OF PUBLIC WORKS
WATERWORKS DIVISION
ANNEXATION 2012-12 (40-147/4-209) PARCEL 3

CITY OF LANCASTER
PREPARED BY: [Name]
DATE: 04/30/2012
SCALE: 1" = 200'
PART NAME: [Name]
WWD 2012-12 PARCEL 3
SPECIAL DISTRICT: [Name]
A.M.B. NO.: 357-261
T.G. PAGE: [Page]
W.W.D. NO. 40
PARCEL 2 AREA: 81.05 AC
SHEET: 4 OF 5

