

JOINT RESOLUTION OF THE BOARD OF SUPERVISORS OF THE COUNTY OF LOS ANGELES, THE BOARD OF DIRECTORS OF THE LANCASTER CEMETERY DISTRICT, THE BOARD OF TRUSTEES OF THE ANTELOPE VALLEY MOSQUITO AND VECTOR CONTROL DISTRICT, THE BOARD OF DIRECTORS OF SANITATION DISTRICT NO. 14 OF LOS ANGELES COUNTY, THE BOARD OF DIRECTORS OF THE ANTELOPE VALLEY RESOURCE CONSERVATION DISTRICT, THE CITY COUNCIL OF THE CITY OF LANCASTER, AND THE BOARD OF DIRECTORS OF THE ANTELOPE VALLEY-EAST KERN WATER AGENCY APPROVING AND ACCEPTING THE NEGOTIATED EXCHANGE OF PROPERTY TAX REVENUES RESULTING FROM ANNEXATION OF PROPERTY DESIGNATED AS ANNEXATION 40-144 (4-206), LOCAL AGENCY FORMATION COMMISSION DESIGNATION 2012-09, TO LOS ANGELES COUNTY WATERWORKS DISTRICT NO. 40, ANTELOPE VALLEY

WHEREAS, pursuant to Section 99.01 of the Revenue and Taxation Code, in the case of any jurisdictional change that will result in a special district providing one or more services to an area where those services have not previously been provided by any local agency, the special district and each local agency that receives an apportionment of property tax revenue from the area may negotiate an exchange of property tax revenue generated in the area subject to the jurisdictional change and attributable to those local agencies; and

WHEREAS, the Board of Supervisors of the County of Los Angeles, acting on behalf of Los Angeles County Waterworks District No. 40, Antelope Valley; County of Los Angeles Public Library; and the Consolidated Fire Protection District of Los Angeles County; together with the Board of Directors of the Lancaster Cemetery District, the Board of Trustees of the Antelope Valley Mosquito and Vector Control District, the Board of Directors of Sanitation District No. 14 of Los Angeles County, the Board of Directors of the Antelope Valley Resource Conservation District, the City Council of the City of Lancaster, and the Board of Directors of the Antelope Valley-East Kern Water Agency, have determined that the amount of property tax revenue to be exchanged between their respective agencies as a result of the annexation proposal identified as Annexation 40-144 (4-206) to Los Angeles County Waterworks District No. 40, Antelope Valley, is as set forth:

NOW, THEREFORE, BE IT RESOLVED as follows:

1. The Los Angeles County Waterworks District No. 40, Antelope Valley; County of Los Angeles Public Library; the Consolidated Fire Protection District of Los Angeles County; Lancaster Cemetery District; Antelope Valley Mosquito and Vector Control District; Sanitation District No. 14 of Los Angeles County; Antelope Valley Resource Conservation District; the City of Lancaster; and Antelope Valley-East Kern Water Agency have determined that the amount of property tax revenue to be exchanged between their respective agencies as a result of the annexation proposal identified as Annexation 40-144 (4-206) is approved and accepted.
2. For fiscal years commencing on or after July 1, 2013, or the July 1 after the effective date of this jurisdictional change, whichever is later, the property tax revenue increment generated from the area within Annexation 40-144 (4-206) shall be allocated to the affected agencies as indicated in the enclosed worksheets (Exhibits A through N).
3. No transfer of property tax revenues other than those specified in Paragraph 2 shall be made as a result of Annexation 40-144 (4-206).
4. If at any time after the effective date of this Joint Resolution the calculations used herein to determine initial property tax transfers or the data used to perform those calculations are found to be incorrect, thus producing an improper or inaccurate property tax transfer, the property tax transfer shall be recalculated, the corrected transfer shall be implemented for the next fiscal year, and any amounts of property tax received in excess of that which is proper shall be refunded to the appropriate agency.

PASSED, APPROVED, AND ADOPTED this _____ day of _____, 2013, by the following vote:

AYES:

NOES:

ABSENT:

ABSTAIN:

R. Rex Parris, Mayor
City of Lancaster

ATTEST:

City Clerk

PROPERTY TAX TRANSFER RESOLUTION WORKSHEET

Annexation To: Waterworks District # 40 ANTELOPE VALLEY
 Account No. 047.04
 TRA: 2405
 Effective Date: July 1, 2013
 Annexation Number: 40-144(4-206), LAFCO 2012-09

Waterworks District # 40, Antelope Valley
 Based on their 2009-10 Tax Sharing Ratios

Acct No. Taxing Agency	(1) Current Tax Share	(2) = (1) / Total Percent	(3) Proposed Dist Share	(4) = (2) * (3) Alloc of Dist Share	(5) Allocation Adjustments	(6) = (1) + (5) New Net Share
1.05 LOS ANGELES COUNTY GENERAL	0.178820776	17.8821%	0.006431286	0.001150048	-0.001181190	0.177639586
1.20 L.A. COUNTY ACCUM CAP OUTLAY	0.000135191	0.0135%	0.006431286	0.000000869	0.000000000	0.000135191
3.01 L.A COUNTY LIBRARY	0.028764548	2.8765%	0.006431286	0.000184993	-0.000184993	0.028579555
7.30 CONSOL. FIRE PRO.DIST.OF L.A.CO.	0.168163832	16.8164%	0.006431286	0.001081510	-0.001081510	0.167082322
7.31 L A C FIRE-FFW	0.004707215	0.4707%	0.006431286	0.000030273	0.000000000	0.004707215
53.30 LANCASTER CEMETERY DISTRICT	0.001657731	0.1658%	0.006431286	0.000010661	-0.000010661	0.001647070
61.05 ANTELOPE VLY MOSQ & VECTOR CONTR	0.003626161	0.3626%	0.006431286	0.000023321	-0.000023321	0.003602840
66.45 CO SANIT DIST NO 14 OPERATING	0.033058764	3.3059%	0.006431286	0.000212610	-0.000212610	0.032846154
68.05 ANTELOPE VY RESOURCE CONSER DIST	0.001119696	0.1120%	0.006431286	0.000007201	-0.000007201	0.001112495
186.01 CITY-LANCASTER TD #1 RP 6	0.066107187	6.6107%	0.006431286	0.000425154	-0.000425154	0.065682033
300.10 ANTELOPE VY.-EAST KERN WATER AGY	0.022707247	2.2707%	0.006431286	0.000146037	-0.000146037	0.022561210
400.00 EDUCATIONAL REV AUGMENTATION FD	0.066098742	6.6099%	0.006431286	0.000425100	Exempt	0.066098742
400.01 EDUCATIONAL AUG FD IMPOUND	0.133002157	13.3002%	0.006431286	0.000855375	Exempt	0.133002157
400.15 COUNTY SCHOOL SERVICES	0.001676363	0.1676%	0.006431286	0.000010781	Exempt	0.001676363
400.21 CHILDREN'S INSTIL TUITION FUND	0.003327278	0.3327%	0.006431286	0.000021399	Exempt	0.003327278
464.01 EASTSIDE UNION SCHOOL DISTRICT	0.070629925	7.0630%	0.006431286	0.000454241	Exempt	0.070629925
464.06 CO.SCH.SERV.FD.- EASTSIDE UNION	0.010451028	1.0451%	0.006431286	0.000067214	Exempt	0.010451028
464.07 DEV CTR HDCPD MINOR EASTSIDE UN	0.001013135	0.1013%	0.006431286	0.000006516	Exempt	0.001013135
717.02 ANTELOPE VALLEY UNION HIGH SCH.	0.115699285	11.5699%	0.006431286	0.000744095	Exempt	0.115699285
717.06 CO.SCH.SERV.FD.- ANTELOPE VALLEY	0.000424657	0.0425%	0.006431286	0.000002731	Exempt	0.000424657
717.07 ANTELOPE VY.UN.HI.-ELEM SCH FD.	0.056683027	5.6683%	0.006431286	0.000364545	Exempt	0.056683027
792.04 ANTELOPE VY.JT. COMMUNITY COLL.	0.032126055	3.2126%	0.006431286	0.000206612	Exempt	0.032126055
047.04 Waterworks Dist # 40 ANTELOPE VALLEY	0.000000000	0.0000%	0.006431286	0.000000000	0.000000000	0.003272678
Total	1.000000000	100.0000%	0.006431286	0.000000000	-0.003272678	1.000000000

(1) Current share as reflected in the Auditor's ATI distribution in AF 49. Must total 1.000000000.
 (2) Must total 100%.
 (3) Weighted average waterworks district share as verified by Auditor.
 (4) Must total share reflected in Column (3).
 (5) Reflects exemption for school entities and County general fund obligation for debt service and FFW.
 (6) Final share distributions to be reflected in tax transfer resolution.

PROPERTY TAX TRANSFER RESOLUTION WORKSHEET

Annexation To: Waterworks District # 40 - ACO FUND
 Account No. 51.75
 TRA: 2405
 Effective Date: July 1, 2013
 Annexation Number: 40-144(4-206), LAFCO 2012-09

Waterworks District # 40, ACO FUND
 Based on their 2009-10 Tax Sharing Ratios

0.006402931

Accnt No.	(1) Current Tax Share	(2) = (1) / Total Percent	(3) Proposed Dist Share	(4) = (2) * (3) Alloc of Dist Share	(5) Allocation Adjustments	(6) = (1) + (5) New Net Share
1.05 LOS ANGELES COUNTY GENERAL	0.177639586	17.7640%	0.006402931	0.001137414	-0.001168420	0.176471166
1.20 L.A. COUNTY ACCUM CAP OUTLAY	0.000135191	0.0135%	0.006402931	0.000000866	0.000000000	0.000135191
3.01 L.A. COUNTY LIBRARY	0.028579555	2.8580%	0.006402931	0.000182993	-0.000182993	0.028396562
7.30 CONSOL. FIRE PRO.DIST.OF L.A.CO.	0.167082322	16.7082%	0.006402931	0.001069817	-0.001069817	0.166012506
7.31 L A C FIRE-FFW	0.004707215	0.4707%	0.006402931	0.00030140	0.000000000	0.004707215
47.04 WATERWORKS DIST #40 - ANTELOPE VALLE	0.003272678	0.3273%	0.006402931	0.00020955	-0.00020955	0.003251723
53.30 LANCASTER CEMETERY DISTRICT	0.001647070	0.1647%	0.006402931	0.00010546	-0.00010546	0.001636524
61.05 ANTELOPE VLY MOSQ & VECTOR CONTR	0.003602840	0.3603%	0.006402931	0.00023069	-0.00023069	0.003579771
66.45 CO SANIT DIST NO 14 OPERATING	0.032846154	3.2846%	0.006402931	0.000210312	-0.000210312	0.032635842
68.05 ANTELOPE VY RESOURCE CONSER DIST	0.001112495	0.1112%	0.006402931	0.00007123	-0.00007123	0.001105372
186.01 CITY-LANCASTER TD #1 RP 6	0.065682033	6.5682%	0.006402931	0.000420558	-0.000420558	0.065261475
300.10 ANTELOPE VY.-EAST KERN WATER AGY	0.022561210	2.2561%	0.006402931	0.000144458	-0.000144458	0.022416752
400.00 EDUCATIONAL REV AUGMENTATION FD	0.066098742	6.6099%	0.006402931	0.000423226	Exempt	0.066098742
400.01 EDUCATIONAL AUG FD IMPOUND	0.133002157	13.3002%	0.006402931	0.000851604	Exempt	0.133002157
400.15 COUNTY SCHOOL SERVICES	0.001676363	0.1676%	0.006402931	0.00010734	Exempt	0.001676363
400.21 CHILDREN'S INSTIL TUITION FUND	0.003327278	0.3327%	0.006402931	0.00021304	Exempt	0.003327278
464.01 EASTSIDE UNION SCHOOL DISTRICT	0.070629925	7.0630%	0.006402931	0.000452239	Exempt	0.070629925
464.06 CO.SCH.SERV.FD.- EASTSIDE UNION	0.010451028	1.0451%	0.006402931	0.000066917	Exempt	0.010451028
464.07 DEV CTR HDCPD MINOR EASTSIDE UN	0.001013135	0.1013%	0.006402931	0.000006487	Exempt	0.001013135
717.02 ANTELOPE VALLEY UNION HIGH SCH.	0.115699285	11.5699%	0.006402931	0.000740815	Exempt	0.115699285
717.06 CO.SCH.SERV.FD.- ANTELOPE VALLEY	0.000424657	0.0425%	0.006402931	0.000002719	Exempt	0.000424657
717.08 ANTELOPE VY.UN.HI.-K.P.S.-ELEM	0.056683027	5.6683%	0.006402931	0.000362938	Exempt	0.056683027
792.04 ANTELOPE VY.JT. COMMUNITY COLL.	0.032126055	3.2126%	0.006402931	0.000205701	Exempt	0.032126055
051.75 Waterworks Dist # 40 ACO FUND	0.000000000	0.0000%	0.006402931	0.000000000	0.000000000	0.003258249
Total	1.000000000	100.0000%	0.006402931	0.000000000	-0.003258249	1.000000000

- (1) Current share as reflected in the Auditor's ATI distribution in AF 49. Must total 1.000000000.
- (2) Must total 100%.
- (3) Weighted average waterworks district share as verified by Auditor.
- (4) Must total share reflected in Column (3).
- (5) Reflects exemption for school entities and County general fund obligation for debt service and FFW.
- (6) Final share distributions to be reflected in tax transfer resolution.

PROPERTY TAX TRANSFER RESOLUTION WORKSHEET

Annexation To: Waterworks District # 40 ANTELOPE VALLEY
 Account No. 047.04
 TRA: 5814
 Effective Date: July 1, 2013
 Annexation Number: 40-144(4-206), LAFCO 2012-09

0.006431286

Waterworks District # 40, Antelope Valley
 Based on their 2009-10 Tax Sharing Ratios

Acct No. Taxing Agency	(1) Current Tax Share	(2) = (1) / Total Percent	(3) Proposed Dist Share	(4) = (2) * (3) Alloc of Dist Share	(5) Allocation Adjustments	(6) = (1) + (5) New Net Share
1.05 LOS ANGELES COUNTY GENERAL	0.387285555	38.7286%	0.006431286	0.002490744	-0.002523349	0.384762206
1.20 L.A. COUNTY ACCUM CAP OUTLAY	0.000139011	0.0139%	0.006431286	0.000000894	0.000000000	0.000139011
3.01 L.A COUNTY LIBRARY	0.035448985	3.5449%	0.006431286	0.000227983	-0.000227983	0.035221002
7.30 CONSOL. FIRE PRO.DIST.OF L.A.CO.	0.171216296	17.1216%	0.006431286	0.001101141	-0.001101141	0.170115155
7.31 L A C FIRE-FFW	0.004930666	0.4931%	0.006431286	0.000031711	0.000000000	0.004930666
53.30 LANCASTER CEMETERY DISTRICT	0.001944215	0.1944%	0.006431286	0.000012504	-0.000012504	0.001931711
61.05 ANTELOPE VLY MOSQ & VECTOR CONTR	0.002446447	0.2446%	0.006431286	0.000015734	-0.000015734	0.002430713
66.45 CO SANIT DIST NO 14 OPERATING	0.004973000	0.4973%	0.006431286	0.000031983	-0.000031983	0.004941017
68.05 ANTELOPE VY RESOURCE CONSER DIST	0.001149795	0.1150%	0.006431286	0.000007395	-0.000007395	0.001142400
186.01 CITY-LANCASTER TD #1 RP 6	0.066205245	6.6205%	0.006431286	0.000425785	-0.000425785	0.065779460
300.10 ANTELOPE VY.-EAST KERN WATER AGY	0.023287201	2.3287%	0.006431286	0.000149767	-0.000149767	0.023137434
400.00 EDUCATIONAL REV AUGMENTATION FD	0.000000000	0.0000%	0.006431286	0.000000000	Exempt	0.000000000
400.01 EDUCATIONAL AUG FD IMPOUND	0.000000000	0.0000%	0.006431286	0.000000000	Exempt	0.000000000
400.15 COUNTY SCHOOL SERVICES	0.001727533	0.1728%	0.006431286	0.000011110	Exempt	0.001727533
400.21 CHILDREN'S INSTIL TUITION FUND	0.003428527	0.3429%	0.006431286	0.000022050	Exempt	0.003428527
529.01 LANCASTER SCHOOL DISTRICT	0.072792689	7.2793%	0.006431286	0.000468151	Exempt	0.072792689
529.06 CO.SCH.SERV.FD.- LANCASTER	0.010770856	1.0771%	0.006431286	0.000069270	Exempt	0.010770856
529.07 DEV CTR HDCPD MINOR LANCASTER	0.001043849	0.1044%	0.006431286	0.000006713	Exempt	0.001043849
717.02 ANTELOPE VALLEY UNION HIGH SCH.	0.119242716	11.9243%	0.006431286	0.000766884	Exempt	0.119242716
717.06 CO.SCH.SERV.FD.- ANTELOPE VALLEY	0.000438518	0.0439%	0.006431286	0.000002820	Exempt	0.000438518
717.07 ANTELOPE VY.UN.HI-ELEM SCH FD.	0.058418910	5.8419%	0.006431286	0.000375709	Exempt	0.058418910
792.04 ANTELOPE VY.JT. COMMUNITY COLL.	0.033109986	3.3110%	0.006431286	0.000212940	Exempt	0.033109986

047.04 Waterworks Dist # 40 ANTELOPE VALLEY	0.000000000	0.0000%	0.006431286	0.000000000	0.000000000	0.004495639
Total	1.000000000	100.0000%		0.006431286	-0.004495639	1.000000000

- (1) Current share as reflected in the Auditor's ATI distribution in AF 49. Must total 1.000000000.
- (2) Must total 100%.
- (3) Weighted average waterworks district share as verified by Auditor.
- (4) Must total share reflected in Column (3).
- (5) Reflects exemption for school entities and County general fund obligation for debt service and FFW.
- (6) Final share distributions to be reflected in tax transfer resolution.

PROPERTY TAX TRANSFER RESOLUTION WORKSHEET

Annexation To: Waterworks District # 40 - ACO FUND
 Account No. 51.75
 TRA: 5814
 Effective Date: July 1, 2013
 Annexation Number: 40-144(4-206), LAFCO 2012-09

Waterworks District # 40, ACO FUND
 Based on their 2009-10 Tax Sharing Ratios

0.006402931

Accnt No.	(1) Current Tax Share	(2) = (1) / Total Percent	(3) Proposed Dist Share	(4) = (2) * (3) Alloc of Dist Share	(5) Allocation Adjustments	(6) = (1) + (5) New Net Share
1.05 LOS ANGELES COUNTY GENERAL	0.384762206	38.4762%	0.006402931	0.002463606	-0.002496067	0.382266140
1.20 L.A. COUNTY ACCUM CAP OUTLAY	0.000139011	0.0139%	0.006402931	0.000000890	0.000000000	0.000139011
3.01 L.A. COUNTY LIBRARY	0.035221002	3.5221%	0.006402931	0.000225518	-0.000225518	0.034995485
7.30 CONSOL. FIRE PRO.DIST.OF L.A.CO.	0.170115155	17.0115%	0.006402931	0.001089236	-0.001089236	0.169025919
7.31 L A C FIRE-FFW	0.004930666	0.4931%	0.006402931	0.000031571	0.000000000	0.004930666
47.04 WATERWORKS DIST #40 - ANTELOPE VALLE	0.004495639	0.4496%	0.006402931	0.000028785	-0.000028785	0.004466854
53.30 LANCASTER CEMETERY DISTRICT	0.001931711	0.1932%	0.006402931	0.000012369	-0.000012369	0.001919343
61.05 ANTELOPE VLY MOSQ & VECTOR CONTR	0.002430713	0.2431%	0.006402931	0.000015564	-0.000015564	0.002415150
66.45 CO SANIT DIST NO 14 OPERATING	0.004941017	0.4941%	0.006402931	0.000031637	-0.000031637	0.004909380
68.05 ANTELOPE VY RESOURCE CONSER DIST	0.001142400	0.1142%	0.006402931	0.000007315	-0.000007315	0.001135086
186.01 CITY-LANCASTER TD #1 RP 6	0.065779460	6.5779%	0.006402931	0.000421181	-0.000421181	0.065358279
300.10 ANTELOPE VY.-EAST KERN WATER AGY	0.023137434	2.3137%	0.006402931	0.000148147	-0.000148147	0.022989287
400.00 EDUCATIONAL REV AUGMENTATION FD	0.000000000	0.0000%	0.006402931	0.000000000	Exempt	0.000000000
400.01 EDUCATIONAL AUG FD IMPOUND	0.000000000	0.0000%	0.006402931	0.000000000	Exempt	0.000000000
400.15 COUNTY SCHOOL SERVICES	0.001727533	0.1728%	0.006402931	0.000011061	Exempt	0.001727533
400.21 CHILDREN'S INSTIL TUITION FUND	0.003428527	0.3429%	0.006402931	0.000021953	Exempt	0.003428527
464.01 EASTSIDE UNION SCHOOL DISTRICT	0.072792689	7.2793%	0.006402931	0.000466087	Exempt	0.072792689
464.06 CO.SCH.SERV.FD.- EASTSIDE UNION	0.010770856	1.0771%	0.006402931	0.000068965	Exempt	0.010770856
464.07 DEV CTR HDCPD MINOR EASTSIDE UN	0.001043849	0.1044%	0.006402931	0.000006684	Exempt	0.001043849
717.02 ANTELOPE VALLEY UNION HIGH SCH.	0.119242716	11.9243%	0.006402931	0.000763503	Exempt	0.119242716
717.06 CO.SCH.SERV.FD.- ANTELOPE VALLEY	0.000438518	0.0439%	0.006402931	0.000002808	Exempt	0.000438518
717.08 ANTELOPE VY.UN.HI.-K.P.S.-ELEM	0.058418910	5.8419%	0.006402931	0.000374052	Exempt	0.058418910
792.04 ANTELOPE VY.JT. COMMUNITY COLL.	0.053109986	3.3110%	0.006402931	0.000212001	Exempt	0.053109986
051.75 Waterworks Dist # 40 ACO FUND	0.000000000	0.0000%	0.006402931	0.000000000	0.000000000	0.004475818
Total	1.000000000	100.0000%	0.006402931	0.000000000	-0.004475818	1.000000000

(1) Current share as reflected in the Auditor's ATI distribution in AF 49. Must total 1.000000000.
 (2) Must total 100%.
 (3) Weighted average waterworks district share as verified by Auditor.
 (4) Must total share reflected in Column (3).
 (5) Reflects exemption for school entities and County general fund obligation for debt service and FFW.
 (6) Final share distributions to be reflected in tax transfer resolution.

PROPERTY TAX TRANSFER RESOLUTION WORKSHEET

Waterworks District # 40 ANTELOPE VALLEY
 047.04
 13935
 July 1, 2013
 40-144(4-206), LAFCO 2012-09

Annexation To:
 Account No.
 TRA:
 Effective Date:
 Annexation Number:

Waterworks District # 40, Antelope Valley
 Based on their 2009-10 Tax Sharing Ratios

0.006431286

Accnt No.	Taxing Agency	(1) Current Tax Share	(2) = (1) / Total Percent	(3) Proposed Dist Share	(4) = (2) * (3) Alloc of Dist Share	(5) Allocation Adjustments	(6) = (1) + (5) New Net Share
1.05	LOS ANGELES COUNTY GENERAL	0.439631143	43.9631%	0.006431286	0.002827394	-0.002869366	0.436761777
1.20	L.A. COUNTY ACCUM CAP OUTLAY	0.000116181	0.0116%	0.006431286	0.000000747	0.000000000	0.000116181
3.01	L.A. COUNTY LIBRARY	0.029482028	2.9482%	0.006431286	0.000189607	-0.000189607	0.029292421
7.30	CONSOL. FIRE PRO.DIST.OF L.A.CO.	0.177305374	17.7305%	0.006431286	0.001140302	-0.001140302	0.176165072
7.31	L A C FIRE-FFW	0.006410165	0.6410%	0.006431286	0.000041226	0.000000000	0.006410165
53.30	LANCASTER CEMETERY DISTRICT	0.001614809	0.1615%	0.006431286	0.000010385	-0.000010385	0.001604424
61.05	ANTELOPE VLY MOSQ & VECTOR CONTR	0.002032533	0.2033%	0.006431286	0.000013072	-0.000013072	0.002019461
66.45	CO SANIT DIST NO 14 OPERATING	0.005104391	0.5104%	0.006431286	0.000032828	-0.000032828	0.005071563
68.05	ANTELOPE VY RESOURCE CONSERV DIST	0.000955671	0.0956%	0.006431286	0.000006146	-0.000006146	0.000949525
186.01	CITY-LANCASTER TD #1 RP 6	0.067127229	6.7128%	0.006431286	0.000431718	-0.000431718	0.066696011
300.10	ANTELOPE VY.-EAST KERN WATER AGY	0.019372228	1.9372%	0.006431286	0.000124588	-0.000124588	0.019247640
400.00	EDUCATIONAL REV AUGMENTATION FD	0.000000000	0.0000%	0.006431286	0.000000000	Exempt	0.000000000
400.01	EDUCATIONAL AUG FD IMPOUND	0.000000000	0.0000%	0.006431286	0.000000000	Exempt	0.000000000
400.15	COUNTY SCHOOL SERVICES	0.001439932	0.1440%	0.006431286	0.000009261	Exempt	0.001439932
400.21	CHILDREN'S INSTIL TUITION FUND	0.002857797	0.2858%	0.006431286	0.000018379	Exempt	0.002857797
464.01	EASTSIDE UNION SCHOOL DISTRICT	0.060669275	6.0669%	0.006431286	0.000390181	Exempt	0.060669275
464.06	CO.SCH.SERV.FD.- EASTSIDE UNION	0.008977427	0.8977%	0.006431286	0.000057736	Exempt	0.008977427
464.07	DEV CTR HDCPD MINOR EASTSIDE UN	0.000870385	0.0870%	0.006431286	0.000005598	Exempt	0.000870385
717.02	ANTELOPE VALLEY UNION HIGH SCH.	0.099382585	9.9383%	0.006431286	0.0000639158	Exempt	0.099382585
717.06	CO.SCH.SERV.FD.- ANTELOPE VALLEY	0.000365094	0.0365%	0.006431286	0.000002348	Exempt	0.000365094
717.07	ANTELOPE VY.UN.HI-ELEM SCH FD.	0.048689311	4.8689%	0.006431286	0.000313135	Exempt	0.048689311
792.04	ANTELOPE VY.JT. COMMUNITY COLL.	0.027595942	2.7596%	0.006431286	0.000177477	Exempt	0.027595942
047.04	Waterworks Dist # 40 ANTELOPE VALLEY	0.000000000	0.0000%	0.006431286	0.000000000	0.000000000	0.004818012
Total		1.000000000	100.0000%	0.006431286	0.000000000	-0.004818012	1.000000000

(1) Current share as reflected in the Auditor's ATI distribution in AF 49. Must total 1.000000000.

(2) Must total 100%.

(3) Weighted average waterworks district share as verified by Auditor.

(4) Must total share reflected in Column (3).

(5) Reflects exemption for school entities and County general fund obligation for debt service and FFW.

(6) Final share distributions to be reflected in tax transfer resolution.

PROPERTY TAX TRANSFER RESOLUTION WORKSHEET

Annexation To: Waterworks District # 40 - ACO FUND
 Account No. 51.75
 TRA: 13935
 Effective Date: July 1, 2013
 Annexation Number: 40-144(4-206), LAFCO 2012-09

0.006402931

Waterworks District # 40, ACO FUND
 Based on their 2009-10 Tax Sharing Ratios

Accnt No. Taxing Agency	(1) Current Tax Share	(2) = (1) / Total Percent	(3) Proposed Dist Share	(4) = (2) * (3) Alloc of Dist Share	(5) Allocation Adjustments	(6) = (1) + (5) New Net Share
1.05 LOS ANGELES COUNTY GENERAL	0.436761777	43.6762%	0.006402931	0.002796556	-0.002838343	0.433923433
1.20 L.A. COUNTY ACCUM CAP OUTLAY	0.000116181	0.0116%	0.006402931	0.000000744	0.000000000	0.000116181
3.01 L.A. COUNTY LIBRARY	0.029292421	2.9292%	0.006402931	0.000187557	-0.000187557	0.029104863
7.30 CONSOL. FIRE PRO.DIST.OF L.A.CO.	0.176165072	17.6165%	0.006402931	0.001127973	-0.001127973	0.175037100
7.31 L A C FIRE-FFW	0.006410165	0.6410%	0.006402931	0.000041044	0.000000000	0.006410165
47.04 WATERWORKS DIST #40 - ANTELOPE VALLE	0.004818012	0.4818%	0.006402931	0.000030849	-0.000030849	0.004787163
53.30 LANCASTER CEMETERY DISTRICT	0.001604424	0.1604%	0.006402931	0.000010273	-0.000010273	0.001594151
61.05 ANTELOPE VLY MOSQ. & VECTOR CONTR	0.002019461	0.2019%	0.006402931	0.000012930	-0.000012930	0.002006531
66.45 CO SANIT DIST NO 14 OPERATING	0.005071563	0.5072%	0.006402931	0.000032473	-0.000032473	0.005039090
68.05 ANTELOPE VY RESOURCE CONSER DIST	0.000949525	0.0950%	0.006402931	0.000006080	-0.000006080	0.000943445
186.01 CITY-LANCASTER TD #1 RP 6	0.06696011	6.6696%	0.006402931	0.000427050	-0.000427050	0.066268961
300.00 ANTELOPE VY.-EAST KERN WATER AGY	0.019247640	1.9248%	0.006402931	0.000123241	-0.000123241	0.019124398
400.00 EDUCATIONAL REV AUGMENTATION FD	0.000000000	0.0000%	0.006402931	0.000000000	Exempt	0.000000000
400.01 EDUCATIONAL AUG FD IMPOUND	0.000000000	0.0000%	0.006402931	0.000000000	Exempt	0.000000000
400.15 COUNTY SCHOOL SERVICES	0.001439932	0.1440%	0.006402931	0.000009220	Exempt	0.001439932
400.21 CHILDREN'S INSTIL TUITION FUND	0.002857797	0.2858%	0.006402931	0.000018298	Exempt	0.002857797
464.01 EASTSIDE UNION SCHOOL DISTRICT	0.060669275	6.0669%	0.006402931	0.000388461	Exempt	0.060669275
464.06 CO.SCH.SERV.FD.- EASTSIDE UNION	0.008977427	0.8977%	0.006402931	0.000057482	Exempt	0.008977427
464.07 DEV CTR HDCPD MINOR EASTSIDE UN	0.000870385	0.0870%	0.006402931	0.000005573	Exempt	0.000870385
717.02 ANTELOPE VALLEY UNION HIGH SCH.	0.099382585	9.9383%	0.006402931	0.000636340	Exempt	0.099382585
717.06 CO.SCH.SERV.FD.- ANTELOPE VALLEY	0.000365094	0.0365%	0.006402931	0.000002338	Exempt	0.000365094
717.08 ANTELOPE VY.UN.HI.-K.P.S.-ELEM	0.048689311	4.8689%	0.006402931	0.000311754	Exempt	0.048689311
792.04 ANTELOPE VY.JT. COMMUNITY COLL.	0.027595942	2.7596%	0.006402931	0.000176695	Exempt	0.027595942
051.75 Waterworks Dist # 40 ACO FUND	0.000000000	0.0000%	0.006402931	0.000000000	0.000000000	0.004796770
Total	1.000000000	100.0000%	0.006402931	0.000000000	-0.004796770	1.000000000

(1) Current share as reflected in the Auditor's ATI distribution in AF 49. Must total 1.000000000.
 (2) Must total 100%.
 (3) Weighted average waterworks district share as verified by Auditor.
 (4) Must total share reflected in Column (3).
 (5) Reflects exemption for school entities and County general fund obligation for debt service and FFW.
 (6) Final share distributions to be reflected in tax transfer resolution.

PROPERTY TAX TRANSFER RESOLUTION WORKSHEET

Annexation To: Waterworks District # 40 ANTELOPE VALLEY
 Account No. 047.04
 TRA: 13936
 Effective Date: July 1, 2013
 Annexation Number: 40-144(4-206), LAFCO 2012-09

0.006431286

Waterworks District # 40, Antelope Valley
 Based on their 2009-10 Tax Sharing Ratios

Accnt No.	Taxing Agency	(1) Current Tax Share	(2) = (1) / Total Percent	(3) Proposed Dist Share	(4) = (2) * (3) Alloc of Dist Share	(5) Allocation Adjustments	(6) = (1) + (5) New Net Share
1.05	LOS ANGELES COUNTY GENERAL	0.439631143	43.9631%	0.006431286	0.002827394	-0.002869366	0.436761777
1.20	L.A. COUNTY ACCUM CAP OUTLAY	0.000116181	0.0116%	0.006431286	0.000000747	0.000000000	0.000116181
3.01	L.A. COUNTY LIBRARY	0.029482028	2.9482%	0.006431286	0.000189607	-0.000189607	0.029292421
7.30	CONSOL. FIRE PRO.DIST.OF L.A.CO.	0.177305374	17.7305%	0.006431286	0.001140302	-0.001140302	0.176165072
7.31	L A C FIRE-FFW	0.006410165	0.6410%	0.006431286	0.000041226	0.000000000	0.006410165
53.30	LANCASTER CEMETERY DISTRICT	0.001614809	0.1615%	0.006431286	0.000103385	-0.000103385	0.001604424
61.05	ANTELOPE VLY MOSQ & VECTOR CONTR	0.002032533	0.2033%	0.006431286	0.000013072	-0.000013072	0.002019461
66.45	CO SANIT DIST NO 14 OPERATING	0.005104391	0.5104%	0.006431286	0.000032828	-0.000032828	0.005071563
68.05	ANTELOPE VY RESOURCE CONSER DIST	0.000955671	0.0956%	0.006431286	0.000006146	-0.000006146	0.000949525
186.01	CITY-LANCASTER TD #1 RP 6	0.067127229	6.7128%	0.006431286	0.000431718	-0.000431718	0.066696011
300.10	ANTELOPE VY.-EAST KERN WATER AGY	0.019372228	1.9372%	0.006431286	0.000124588	-0.000124588	0.019247640
400.00	EDUCATIONAL REV AUGMENTATION FD	0.000000000	0.0000%	0.006431286	0.000000000	Exempt	0.000000000
400.01	EDUCATIONAL AUG FD IMPOUND	0.000000000	0.0000%	0.006431286	0.000000000	Exempt	0.000000000
400.15	COUNTY SCHOOL SERVICES	0.001439932	0.1440%	0.006431286	0.000009261	Exempt	0.001439932
400.21	CHILDREN'S INSTIL TUITION FUND	0.002857797	0.2858%	0.006431286	0.000018379	Exempt	0.002857797
464.01	EASTSIDE UNION SCHOOL DISTRICT	0.060669275	6.0669%	0.006431286	0.000390181	Exempt	0.060669275
464.06	CO.SCH.SERV.FD.- EASTSIDE UNION	0.008977427	0.8977%	0.006431286	0.000057736	Exempt	0.008977427
717.02	ANTELOPE VALLEY UNION HIGH SCH.	0.000870385	0.0870%	0.006431286	0.000005598	Exempt	0.000870385
717.06	CO.SCH.SERV.FD.- ANTELOPE VALLEY	0.099382585	9.9383%	0.006431286	0.000639158	Exempt	0.099382585
717.07	ANTELOPE VY.UN.HI-ELEM SCH FD.	0.000365094	0.0365%	0.006431286	0.000002348	Exempt	0.000365094
792.04	ANTELOPE VY.JT. COMMUNITY COLL.	0.048689311	4.8689%	0.006431286	0.000313135	Exempt	0.048689311
		0.027595942	2.7596%	0.006431286	0.000177477	Exempt	0.027595942
047.04	Waterworks Dist # 40 ANTELOPE VALLEY	0.000000000	0.0000%	0.006431286	0.000000000	0.000000000	0.004818012
	Total	1.000000000	100.0000%	0.006431286	0.000000000	-0.004818012	1.000000000

(1) Current share as reflected in the Auditor's ATI distribution in AF 49. Must total 1.000000000.
 (2) Must total 100%.
 (3) Weighted average waterworks district share as verified by Auditor.
 (4) Must total share reflected in Column (3).
 (5) Reflects exemption for school entities and County general fund obligation for debt service and FFW.
 (6) Final share distributions to be reflected in tax transfer resolution.

PROPERTY TAX TRANSFER RESOLUTION WORKSHEET

Annexation To: Waterworks District # 40 - ACO FUND
 Account No. 51.75
 TRA: 13936
 Effective Date: July 1, 2013
 Annexation Number: 40-144(4-206), LAFCO 2012-09

Waterworks District # 40, ACO FUND
 Based on their 2009-10 Tax Sharing Ratios

Acct No. Taxing Agency	(1) Current Tax Share	(2) = (1) / Total Percent	(3) Proposed Dist Share	(4) = (2) * (3) Alloc of Dist Share	(5) Allocation Adjustments	(6) = (1) + (5) New Net Share
1.05 LOS ANGELES COUNTY GENERAL	0.436761777	43.6762%	0.006402931	0.002796556	-0.002838343	0.433923433
1.20 L.A. COUNTY ACCUM CAP OUTLAY	0.000116181	0.0116%	0.006402931	0.000000744	0.000000000	0.000116181
3.01 L A COUNTY LIBRARY	0.029292421	2.9292%	0.006402931	0.000187557	-0.000187557	0.029104863
7.30 CONSOL. FIRE PRO.DIST.OF L.A.CO.	0.176165072	17.6165%	0.006402931	0.001127973	-0.001127973	0.175037100
7.31 L A C FIRE-FFW	0.006410165	0.6410%	0.006402931	0.000041044	0.000000000	0.006410165
47.04 WATERWORKS DIST #40 - ANTELOPE VALLE'	0.004818012	0.4818%	0.006402931	0.000030849	-0.000030849	0.004787163
53.30 LANCASTER CEMETERY DISTRICT	0.001604424	0.1604%	0.006402931	0.000010273	-0.000010273	0.001594151
61.05 ANTELOPE VLY MOSQ & VECTOR CONTR	0.002019461	0.2019%	0.006402931	0.000012930	-0.000012930	0.002006531
66.45 CO SANIT DIST NO 14 OPERATING	0.005071563	0.5072%	0.006402931	0.000032473	-0.000032473	0.005039090
68.05 ANTELOPE VY RESOURCE CONSER DIST	0.000949525	0.0950%	0.006402931	0.000006080	-0.000006080	0.000943445
186.01 CITY-LANCASTER TD #1 RP 6	0.066696011	6.6696%	0.006402931	0.000427050	-0.000427050	0.066268961
300.10 ANTELOPE VY.-EAST KERN WATER AGY	0.019247640	1.9248%	0.006402931	0.000123241	-0.000123241	0.019124398
400.00 EDUCATIONAL REV AUGMENTATION FD	0.000000000	0.0000%	0.006402931	0.000000000	Exempt	0.000000000
400.01 EDUCATIONAL AUG FD IMPOUND	0.000000000	0.0000%	0.006402931	0.000000000	Exempt	0.000000000
400.15 COUNTY SCHOOL SERVICES	0.001439932	0.1440%	0.006402931	0.000009220	Exempt	0.001439932
400.21 CHILDREN'S INSTIL TUITION FUND	0.002857797	0.2858%	0.006402931	0.000018298	Exempt	0.002857797
464.01 EASTSIDE UNION SCHOOL DISTRICT	0.060669275	6.0669%	0.006402931	0.000388461	Exempt	0.060669275
464.06 CO.SCH.SERV.FD.- EASTSIDE UNION	0.008977427	0.8977%	0.006402931	0.000057482	Exempt	0.008977427
464.07 DEV CTR HDCPD MINOR EASTSIDE UN	0.000870385	0.0870%	0.006402931	0.000005573	Exempt	0.000870385
717.02 ANTELOPE VALLEY UNION HIGH SCH.	0.099382585	9.9383%	0.006402931	0.000636340	Exempt	0.099382585
717.06 CO.SCH.SERV.FD.- ANTELOPE VALLEY	0.000365094	0.0365%	0.006402931	0.000002338	Exempt	0.000365094
717.08 ANTELOPE VY.UN.HI.-K.P.S.-ELEM	0.048689311	4.8689%	0.006402931	0.000311754	Exempt	0.048689311
792.04 ANTELOPE VY.JT. COMMUNITY COLL.	0.027595942	2.7596%	0.006402931	0.000176695	Exempt	0.027595942
051.75 Waterworks Dist # 40 ACO FUND	0.000000000	0.0000%	0.006402931	0.000000000	0.000000000	0.004796770
Total	1.000000000	100.0000%	0.006402931	0.006402931	-0.004796770	1.000000000

- (1) Current share as reflected in the Auditor's ATI distribution in AF 49. Must total 1.000000000.
- (2) Must total 100%.
- (3) Weighted average waterworks district share as verified by Auditor.
- (4) Must total share reflected in Column (3).
- (5) Reflects exemption for school entities and County general fund obligation for debt service and FFW.
- (6) Final share distributions to be reflected in tax transfer resolution.

PROPERTY TAX TRANSFER RESOLUTION WORKSHEET

Annexation To: Waterworks District # 40 ANTELOPE VALLEY
 Account No. 047.04
 TRA: 13992
 Effective Date: July 1, 2013
 Annexation Number: 40-144(4-206), LAFCO 2012-09

0.006431286

Waterworks District # 40, Antelope Valley
 Based on their 2009-10 Tax Sharing Ratios

Accnt No. Taxing Agency	(1) Current Tax Share	(2) = (1) / Total Percent	(3) Proposed Dist Share	(4) = (2) * (3) Alloc of Dist Share	(5) Allocation Adjustments	(6) = (1) + (5) New Net Share
1.05 LOS ANGELES COUNTY GENERAL	0.439631143	43.9631%	0.006431286	0.002827394	-0.002869366	0.436761777
1.20 L.A. COUNTY ACCUM CAP OUTLAY	0.000116181	0.0116%	0.006431286	0.000000747	0.000000000	0.000116181
3.01 L.A. COUNTY LIBRARY	0.029482028	2.9482%	0.006431286	0.000189607	-0.000189607	0.029292421
7.30 CONSOL. FIRE PRO.DIST.OF L.A.CO.	0.177305374	17.7305%	0.006431286	0.001140302	-0.001140302	0.176165072
7.31 L A C FIRE-FFW	0.006410165	0.6410%	0.006431286	0.000041226	0.000000000	0.006410165
53.30 LANCASTER CEMETERY DISTRICT	0.001614809	0.1615%	0.006431286	0.00010385	-0.00010385	0.001604424
61.05 ANTELOPE VLY MOSQ & VECTOR CONTR	0.002032533	0.2033%	0.006431286	0.00013072	-0.00013072	0.002019461
66.45 CO SANIT DIST NO 14 OPERATING	0.005104391	0.5104%	0.006431286	0.00032828	-0.00032828	0.005071563
68.05 ANTELOPE VY RESOURCE CONSER DIST	0.000955671	0.0956%	0.006431286	0.00006146	-0.00006146	0.000949525
186.01 CITY-LANCASTER TD #1 RP 6	0.067127229	6.7128%	0.006431286	0.000431718	-0.000431718	0.066696011
300.10 ANTELOPE VY.-EAST KERN WATER AGY	0.019372228	1.9372%	0.006431286	0.000124588	-0.000124588	0.019247640
400.00 EDUCATIONAL REV AUGMENTATION FD	0.000000000	0.0000%	0.006431286	0.000000000	Exempt	0.000000000
400.01 EDUCATIONAL AUG FD IMPOUND	0.000000000	0.0000%	0.006431286	0.000000000	Exempt	0.000000000
400.15 COUNTY SCHOOL SERVICES	0.001439932	0.1440%	0.006431286	0.000009261	Exempt	0.001439932
400.21 CHILDREN'S INSTIL TUITION FUND	0.002857797	0.2858%	0.006431286	0.00018379	Exempt	0.002857797
464.01 EASTSIDE UNION SCHOOL DISTRICT	0.060669275	6.0669%	0.006431286	0.000390181	Exempt	0.060669275
464.06 CO.SCH.SERV.FD.- EASTSIDE UNION	0.008977427	0.8977%	0.006431286	0.00057736	Exempt	0.008977427
464.07 DEV CTR HDCPD MINOR EASTSIDE UN	0.000870385	0.0870%	0.006431286	0.000005598	Exempt	0.000870385
717.02 ANTELOPE VALLEY UNION HIGH SCH.	0.099382585	9.9383%	0.006431286	0.000639158	Exempt	0.099382585
717.06 CO.SCH.SERV.FD.- ANTELOPE VALLEY	0.000365094	0.0365%	0.006431286	0.000002348	Exempt	0.000365094
717.07 ANTELOPE VY.UN.HI-ELEM SCH FD.	0.048689311	4.8689%	0.006431286	0.000313135	Exempt	0.048689311
792.04 ANTELOPE VY.JT. COMMUNITY COLL.	0.027595942	2.7596%	0.006431286	0.000177477	Exempt	0.027595942
047.04 Waterworks Dist # 40 ANTELOPE VALLEY	0.000000000	0.0000%	0.006431286	0.000000000	0.000000000	0.004818012
Total	1.000000000	100.0000%	0.006431286	0.000000000	-0.004818012	1.000000000

(1) Current share as reflected in the Auditor's ATI distribution in AF 49. Must total 1.000000000.

(2) Must total 100%.

(3) Weighted average waterworks district share as verified by Auditor.

(4) Must total share reflected in Column (3).

(5) Reflects exemption for school entities and County general fund obligation for debt service and FFW.

(6) Final share distributions to be reflected in tax transfer resolution.

PROPERTY TAX TRANSFER RESOLUTION WORKSHEET

Annexation To: Waterworks District # 40 - ACO FUND
 Account No. 51.75
 TRA: 13992
 Effective Date: July 1, 2013
 Annexation Number: 40-144(4-206), LAFCO 2012-09

0.006402931

Waterworks District # 40, ACO FUND
 Based on their 2009-10 Tax Sharing Ratios

Accnt No. Taxing Agency	(1) Current Tax Share	(2) = (1) / Total Percent	(3) Proposed Dist Share	(4) = (2) * (3) Alloc of Dist Share	(5) Allocation Adjustments	(6) = (1) + (5) New Net Share
1.05 LOS ANGELES COUNTY GENERAL	0.436761777	43.6762%	0.006402931	0.002796556	-0.002838343	0.433923433
1.20 L.A. COUNTY ACCUM CAP OUTLAY	0.000116181	0.0116%	0.006402931	0.000000744	0.000000000	0.000116181
3.01 L.A. COUNTY LIBRARY	0.029292421	2.9292%	0.006402931	0.000187557	-0.000187557	0.029104863
7.30 CONSOL. FIRE PRO.DIST.OF L.A.CO.	0.176165072	17.6165%	0.006402931	0.001127973	-0.001127973	0.175037100
7.31 L A C FIRE-FFW	0.006410165	0.6410%	0.006402931	0.000041044	0.000000000	0.006410165
47.04 WATERWORKS DIST #40 - ANTELOPE VALLE	0.004818012	0.4818%	0.006402931	0.000030849	-0.000030849	0.004787163
53.30 LANCASTER CEMETERY DISTRICT	0.001604424	0.1604%	0.006402931	0.000010273	-0.000010273	0.001594151
61.05 ANTELOPE VLY MOSQ & VECTOR CONTR	0.002019461	0.2019%	0.006402931	0.000012930	-0.000012930	0.002006531
66.45 CO SANIT DIST NO 14 OPERATING	0.005071563	0.5072%	0.006402931	0.000032473	-0.000032473	0.005039090
68.05 ANTELOPE VY RESOURCE CONSER DIST	0.000949525	0.0950%	0.006402931	0.000006080	-0.000006080	0.000943445
186.01 CITY-LANCASTER TD #1 RP 6	0.066696011	6.6696%	0.006402931	0.000427050	-0.000427050	0.066268961
300.10 ANTELOPE VY.-EAST KERN WATER AGY	0.019247640	1.9248%	0.006402931	0.000123241	-0.000123241	0.019124398
400.00 EDUCATIONAL REV AUGMENTATION FD	0.000000000	0.0000%	0.006402931	0.000000000	Exempt	0.000000000
400.01 EDUCATIONAL AUG FD IMPOUND	0.000000000	0.0000%	0.006402931	0.000000000	Exempt	0.000000000
400.15 COUNTY SCHOOL SERVICES	0.001439932	0.1440%	0.006402931	0.000009220	Exempt	0.001439932
400.21 CHILDREN'S INSTIL TUITION FUND	0.002857797	0.2858%	0.006402931	0.000018298	Exempt	0.002857797
464.01 EASTSIDE UNION SCHOOL DISTRICT	0.060669275	6.0669%	0.006402931	0.000388461	Exempt	0.060669275
464.06 CO.SCH.SERV.FD.- EASTSIDE UNION	0.008977427	0.8977%	0.006402931	0.000057482	Exempt	0.008977427
464.07 DEV CTR HDCPD MINOR EASTSIDE UN	0.000870385	0.0870%	0.006402931	0.000005573	Exempt	0.000870385
717.02 ANTELOPE VALLEY UNION HIGH SCH.	0.099382585	9.9383%	0.006402931	0.000636340	Exempt	0.099382585
717.06 CO.SCH.SERV.FD.- ANTELOPE VALLEY	0.000365094	0.0365%	0.006402931	0.000002338	Exempt	0.000365094
717.08 ANTELOPE VY.UNIHI.-K.P.S.-ELEM	0.048689311	4.8689%	0.006402931	0.000311754	Exempt	0.048689311
792.04 ANTELOPE VY.JT. COMMUNITY COLL.	0.027595942	2.7596%	0.006402931	0.000176695	Exempt	0.027595942
051.75 Waterworks Dist # 40 ACO FUND	0.000000000	0.0000%	0.006402931	0.000000000	0.000000000	0.004796770
Total	1.000000000	100.0000%		0.006402931	-0.004796770	1.000000000

- (1) Current share as reflected in the Auditor's ATI distribution in AF 49. Must total 1.000000000.
- (2) Must total 100%.
- (3) Weighted average waterworks district share as verified by Auditor.
- (4) Must total share reflected in Column (3).
- (5) Reflects exemption for school entities and County general fund obligation for debt service and FFW.
- (6) Final share distributions to be reflected in tax transfer resolution.

PROPERTY TAX TRANSFER RESOLUTION WORKSHEET

Annexation To: Waterworks District # 40 ANTELOPE VALLEY
 Account No. 047.04
 TRA: 14140
 Effective Date: July 1, 2013
 Annexation Number: 40-144(4-206), LAFCO 2012-09

Waterworks District # 40, Antelope Valley
 Based on their 2009-10 Tax Sharing Ratios

Accnt No.	Taxing Agency	(1) Current Tax Share	(2) = (1) / Total Percent	(3) Proposed Dist Share	(4) = (2) * (3) Alloc of Dist Share	(5) Allocation Adjustments	(6) = (1) + (5) New Net Share
1.05	LOS ANGELES COUNTY GENERAL	0.439631143	43.9631%	0.006431286	0.002827394	-0.002869366	0.436761777
1.20	L.A. COUNTY ACCUM CAP OUTLAY	0.000116181	0.0116%	0.006431286	0.000000747	0.000000000	0.000116181
3.01	L.A. COUNTY LIBRARY	0.029482028	2.9482%	0.006431286	0.000189607	-0.000189607	0.029292421
7.30	CONSOL. FIRE PRO.DIST.OF L.A.CO.	0.177305374	17.7305%	0.006431286	0.001140302	-0.001140302	0.176165072
7.31	L A C FIRE-FFW	0.006410165	0.6410%	0.006431286	0.000041226	0.000000000	0.006410165
53.30	LANCASTER CEMETERY DISTRICT	0.001614809	0.1615%	0.006431286	0.000010385	-0.000010385	0.001604424
61.05	ANTELOPE VLY MOSQ & VECTOR CONTR	0.002032533	0.2033%	0.006431286	0.000013072	-0.000013072	0.002019461
66.45	CO SANIT DIST NO 14 OPERATING	0.005104391	0.5104%	0.006431286	0.000032828	-0.000032828	0.005071563
68.05	ANTELOPE VY RESOURCE CONSER DIST	0.000955671	0.0956%	0.006431286	0.000006146	-0.000006146	0.000949525
186.01	CITY-LANCASTER TD #1 RP 6	0.067127229	6.7128%	0.006431286	0.000431718	-0.000431718	0.066696011
300.10	ANTELOPE VY.-EAST KERN WATER AGY	0.019372228	1.9372%	0.006431286	0.000124588	-0.000124588	0.019247640
400.00	EDUCATIONAL REV AUGMENTATION FD	0.000000000	0.0000%	0.006431286	0.000000000	Exempt	0.000000000
400.01	EDUCATIONAL AUG FD IMPOUND	0.000000000	0.0000%	0.006431286	0.000000000	Exempt	0.000000000
400.15	COUNTY SCHOOL SERVICES	0.001439932	0.1440%	0.006431286	0.000009261	Exempt	0.001439932
400.21	CHILDREN'S INSTIL TUITION FUND	0.002857797	0.2858%	0.006431286	0.000018379	Exempt	0.002857797
464.01	EASTSIDE UNION SCHOOL DISTRICT	0.060699275	6.0699%	0.006431286	0.000390181	Exempt	0.060699275
464.06	CO.SCH.SERV.FD.- EASTSIDE UNION	0.008977427	0.8977%	0.006431286	0.000057736	Exempt	0.008977427
464.07	DEV CTR HDCPD MINOR EASTSIDE UN	0.000870385	0.0870%	0.006431286	0.000005598	Exempt	0.000870385
717.02	ANTELOPE VALLEY UNION HIGH SCH.	0.099382585	9.9383%	0.006431286	0.000639158	Exempt	0.099382585
717.06	CO.SCH.SERV.FD.- ANTELOPE VALLEY	0.000365094	0.0365%	0.006431286	0.000002348	Exempt	0.000365094
717.07	ANTELOPE VY.UN.HI-ELEM SCH FD.	0.048689311	4.8689%	0.006431286	0.000313135	Exempt	0.048689311
792.04	ANTELOPE VY.-JT. COMMUNITY COLL.	0.027595942	2.7596%	0.006431286	0.000177477	Exempt	0.027595942
047.04	Waterworks Dist # 40 ANTELOPE VALLEY	0.000000000	0.0000%	0.006431286	0.000000000	0.000000000	0.004818012
Total		1.000000000	100.0000%	0.06431286	0.000000000	-0.004818012	1.000000000

- (1) Current share as reflected in the Auditor's ATI distribution in AF 49. Must total 1.000000000.
- (2) Must total 100%.
- (3) Weighted average waterworks district share as verified by Auditor.
- (4) Must total share reflected in Column (3).
- (5) Reflects exemption for school entities and County general fund obligation for debt service and FFW.
- (6) Final share distributions to be reflected in tax transfer resolution.

PROPERTY TAX TRANSFER RESOLUTION WORKSHEET

Annexation To: Waterworks District # 40 - ACO FUND
 Account No. 51,775
 TRA: 14140
 Effective Date: July 1, 2013
 Annexation Number: 40-144(4-206), LAFCO 2012-09

Accnt No. Taxing Agency	(1) Current Tax Share	(2) = (1) / Total Percent	(3) Proposed Dist Share	(4) = (2) * (3) Alloc of Dist Share	(5) Allocation Adjustments	(6) = (1) + (5) New Net Share
1.05 LOS ANGELES COUNTY GENERAL	0.436761777	43.6762%	0.006402931	0.002796556	-0.002838343	0.433923433
1.20 L.A. COUNTY ACCUM CAP OUTLAY	0.000116181	0.0116%	0.006402931	0.000000744	0.000000000	0.000116181
3.01 L.A. COUNTY LIBRARY	0.029292421	2.9292%	0.006402931	0.000187557	-0.000187557	0.029104863
7.30 CONSOL. FIRE PRO.DIST.OF L.A.CO.	0.176165072	17.6165%	0.006402931	0.001127973	-0.001127973	0.175037100
7.31 L A C FIRE-FFW	0.006410165	0.6410%	0.006402931	0.000041044	0.000000000	0.006410165
47.04 WATERWORKS DIST #40 - ANTELOPE VALLE'	0.004818012	0.4818%	0.006402931	0.000030849	-0.000030849	0.004787163
53.30 LANCASTER CEMETERY DISTRICT	0.001604424	0.1604%	0.006402931	0.000010273	-0.000010273	0.001594151
61.05 ANTELOPE VLY MOSQ & VECTOR CONTR	0.002019461	0.2019%	0.006402931	0.000012930	-0.000012930	0.002006531
66.45 CO SANIT DIST NO 14 OPERATING	0.005071563	0.5072%	0.006402931	0.000032473	-0.000032473	0.005039090
68.05 ANTELOPE VY RESOURCE CONSER DIST	0.000949525	0.0950%	0.006402931	0.000006080	-0.000006080	0.000943445
186.01 CITY-LANCASTER TD #1 RP 6	0.066696011	6.6696%	0.006402931	0.000427050	-0.000427050	0.066268961
300.10 ANTELOPE VY-EAST KERN WATER AGY	0.019247640	1.9248%	0.006402931	0.000123241	-0.000123241	0.019124398
400.00 EDUCATIONAL REV AUGMENTATION FD	0.000000000	0.0000%	0.006402931	0.000000000	Exempt	0.000000000
400.01 EDUCATIONAL AUG FD IMPOUND	0.000000000	0.0000%	0.006402931	0.000000000	Exempt	0.000000000
400.15 COUNTY SCHOOL SERVICES	0.001439932	0.1440%	0.006402931	0.000009220	Exempt	0.001439932
400.21 CHILDREN'S INSTIL TUITION FUND	0.002857797	0.2858%	0.006402931	0.000018298	Exempt	0.002857797
464.01 EASTSIDE UNION SCHOOL DISTRICT	0.060669275	6.0669%	0.006402931	0.000388461	Exempt	0.060669275
464.06 CO.SCH.SERV.FD.- EASTSIDE UNION	0.008977427	0.8977%	0.006402931	0.000057482	Exempt	0.008977427
464.07 DEV CTR HDCPD MINOR EASTSIDE UN	0.000870385	0.0870%	0.006402931	0.000005573	Exempt	0.000870385
717.02 ANTELOPE VALLEY UNION HIGH SCH.	0.099382585	9.9383%	0.006402931	0.000636340	Exempt	0.099382585
717.06 CO.SCH.SERV.FD.- ANTELOPE VALLEY	0.000365094	0.0365%	0.006402931	0.000002338	Exempt	0.000365094
717.08 ANTELOPE VY.UN.HI.-K.P.S.-ELEM	0.048689311	4.8689%	0.006402931	0.000311754	Exempt	0.048689311
792.04 ANTELOPE VY.JT. COMMUNITY COLL.	0.027595942	2.7596%	0.006402931	0.000176695	Exempt	0.027595942
051.75 Waterworks Dist # 40 ACO FUND	0.000000000	0.0000%	0.006402931	0.000000000	0.000000000	0.004796770
Total	1.000000000	100.0000%	0.006402931	0.000000000	-0.004796770	1.000000000

(1) Current share as reflected in the Auditor's ATI distribution in AF 49. Must total 1.000000000.
 (2) Must total 100%.
 (3) Weighted average waterworks district share as verified by Auditor.
 (4) Must total share reflected in Column (3).
 (5) Reflects exemption for school entities and County general fund obligation for debt service and FFW.
 (6) Final share distributions to be reflected in tax transfer resolution.

PROPERTY TAX TRANSFER RESOLUTION WORKSHEET

Annexation To: Waterworks District # 40 ANTELOPE VALLEY
 Account No. 047.04
 TRA: 14432
 Effective Date: July 1, 2013
 Annexation Number: 40-144(4-206), LAFCO 2012-09

Waterworks District # 40, Antelope Valley
 Based on their 2009-10 Tax Sharing Ratios

0.006431286

Accnt No.	Taxing Agency	(1) Current Tax Share	(2) = (1) / Total Percent	(3) Proposed Dist Share	(4) = (2) * (3) Alloc of Dist Share	(5) Allocation Adjustments	(6) = (1) + (5) New Net Share
1.05	LOS ANGELES COUNTY GENERAL	0.439665552	43.9666%	0.006431286	0.002827615	-0.002869588	0.436795964
1.20	L.A. COUNTY ACCUM CAP OUTLAY	0.000116181	0.0116%	0.006431286	0.000000747	0.000000000	0.000116181
3.01	L.A. COUNTY LIBRARY	0.029484302	2.9484%	0.006431286	0.000189622	-0.000189622	0.029294680
7.30	CONSOL. FIRE PRO.DIST.OF L.A.CO.	0.177319050	17.7319%	0.006431286	0.001140390	-0.001140390	0.176178660
7.31	L A C FIRE-FFW	0.006410165	0.6410%	0.006431286	0.000041226	0.000000000	0.006410165
53.30	LANCASTER CEMETERY DISTRICT	0.001614934	0.1615%	0.006431286	0.000010386	-0.000010386	0.001604548
61.05	ANTELOPE VLY MOSQ & VECTOR CONTR	0.002032690	0.2033%	0.006431286	0.000013073	-0.000013073	0.002019617
66.45	CO SANIT DIST NO 14 OPERATING	0.005047003	0.5047%	0.006431286	0.000032459	-0.000032459	0.005014544
68.05	ANTELOPE VY RESOURCE CONSER DIST	0.000955745	0.0956%	0.006431286	0.000006147	-0.000006147	0.000949598
186.01	CITY-LANCASTER TD #1 RP 6	0.067132907	6.7133%	0.006431286	0.000431751	-0.000431751	0.066701156
300.10	ANTELOPE VY -EAST KERN WATER AGY	0.019373723	1.9374%	0.006431286	0.000124598	-0.000124598	0.019249125
400.00	EDUCATIONAL REV AUGMENTATION FD	0.000000000	0.0000%	0.006431286	0.000000000	Exempt	0.000000000
400.01	EDUCATIONAL AUG FD IMPOUND	0.000000000	0.0000%	0.006431286	0.000000000	Exempt	0.000000000
400.15	COUNTY SCHOOL SERVICES	0.001439932	0.1440%	0.006431286	0.000009261	Exempt	0.001439932
400.21	CHILDREN'S INSTIL TUITION FUND	0.002857797	0.2858%	0.006431286	0.000018379	Exempt	0.002857797
464.01	EASTSIDE UNION SCHOOL DISTRICT	0.060669275	6.0669%	0.006431286	0.000390181	Exempt	0.060669275
464.06	CO.SCH.SERV.FD.- EASTSIDE UNION	0.008977427	0.8977%	0.006431286	0.000057736	Exempt	0.008977427
464.07	DEV CTR HDCPD MINOR EASTSIDE UN	0.000870385	0.0870%	0.006431286	0.000005598	Exempt	0.000870385
717.02	ANTELOPE VALLEY UNION HIGH SCH.	0.099382585	9.9383%	0.006431286	0.000639158	Exempt	0.099382585
717.06	CO.SCH.SERV.FD.- ANTELOPE VALLEY	0.000365094	0.0365%	0.006431286	0.000002348	Exempt	0.000365094
717.07	ANTELOPE VY.UN.HI-ELEM SCH FD.	0.048689311	4.8689%	0.006431286	0.000313135	Exempt	0.048689311
792.04	ANTELOPE VY.JT. COMMUNITY COLL.	0.027595942	2.7596%	0.006431286	0.000177477	Exempt	0.027595942
047.04 Waterworks Dist # 40 ANTELOPE VALLEY		0.000000000	0.0000%	0.006431286	0.000000000	0.000000000	0.004818012
Total		1.000000000	100.0000%	0.006431286	0.006431286	-0.004818012	1.000000000

- (1) Current share as reflected in the Auditor's ATI distribution in AF 49. Must total 1.000000000.
- (2) Must total 100%.
- (3) Weighted average waterworks district share as verified by Auditor.
- (4) Must total share reflected in Column (3).
- (5) Reflects exemption for school entities and County general fund obligation for debt service and FFW.
- (6) Final share distributions to be reflected in tax transfer resolution.

PROPERTY TAX TRANSFER RESOLUTION WORKSHEET

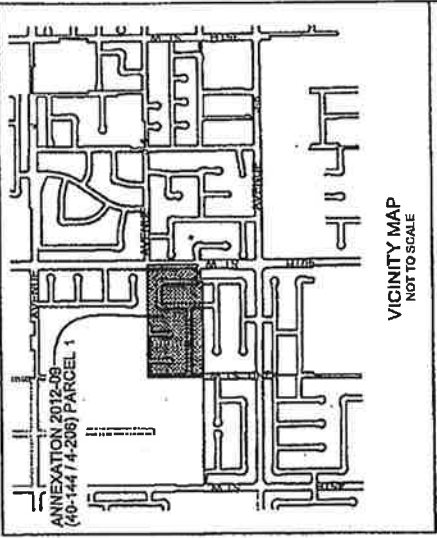
Annexation To: Waterworks District # 40 - ACO FUND
 Account No. 51.75
 TRA: 14432
 Effective Date: July 1, 2013
 Annexation Number: 40-144(4-206), LAFCO 2012-09

Waterworks District # 40, ACO FUND
 Based on their 2009-10 Tax Sharing Ratios

Acct No. Taxing Agency	(1) Current Tax Share	(2) = (1) / Total Percent	(3) Proposed Dist Share	(4) = (2) * (3) Alloc of Dist Share	(5) Allocation Adjustments	(6) = (1) + (5) New Net Share
1.05 LOS ANGELES COUNTY GENERAL	0.436795964	43.6796%	0.006402931	0.002796774	-0.002838562	0.433957402
1.20 L.A. COUNTY ACCUM CAP OUTLAY	0.000116181	0.0116%	0.006402931	0.000000744	0.000000000	0.000116181
3.01 L.A. COUNTY LIBRARY	0.029294680	2.9295%	0.006402931	0.000187572	-0.000187572	0.029107108
7.30 CONSOL. FIRE PRO.DIST.OF L.A.CO.	0.176178660	17.6179%	0.006402931	0.001128060	-0.001128060	0.175050601
7.31 L.A.C.FIRE-FFW	0.006410165	0.6410%	0.006402931	0.000041044	0.000000000	0.006410165
47.04 WATERWORKS DIST #40 - ANTELOPE VALLE	0.004818012	0.4818%	0.006402931	0.000030849	-0.000030849	0.004787163
53.30 LANCASTER CEMETERY DISTRICT	0.001604548	0.1605%	0.006402931	0.00010274	-0.00010274	0.001594274
61.05 ANTELOPE VLY MOSQ & VECTOR CONTR	0.002019617	0.2020%	0.006402931	0.00012931	-0.00012931	0.002006686
66.45 CO SANIT DIST NO 14 OPERATING	0.005014544	0.5015%	0.006402931	0.00032108	-0.00032108	0.004982436
68.05 ANTELOPE VY RESOURCE CONSER DIST	0.000949598	0.0950%	0.006402931	0.00006080	-0.00006080	0.000943518
186.01 CITY-LANCASTER TD #1 RP 6	0.066701156	6.6701%	0.006402931	0.000427083	-0.000427083	0.066274073
300.10 ANTELOPE VY-EAST KERN WATER AGY	0.019249125	1.9249%	0.006402931	0.000123251	-0.000123251	0.019125874
400.00 EDUCATIONAL REV AUGMENTATION FD	0.000000000	0.0000%	0.006402931	0.000000000	Exempt	0.000000000
400.01 EDUCATIONAL AUG FD IMPOUND	0.000000000	0.0000%	0.006402931	0.000000000	Exempt	0.000000000
400.15 COUNTY SCHOOL SERVICES	0.001439932	0.1440%	0.006402931	0.00009220	Exempt	0.001439932
400.21 CHILDREN'S INSTIL TUITION FUND	0.002857797	0.2858%	0.006402931	0.00018298	Exempt	0.002857797
464.01 EASTSIDE UNION SCHOOL DISTRICT	0.060669275	6.0669%	0.006402931	0.000388461	Exempt	0.060669275
464.06 CO.SCH.SERV.FD - EASTSIDE UNION	0.008977427	0.8977%	0.006402931	0.000057482	Exempt	0.008977427
464.07 DEV CTR HDCPD MINOR EASTSIDE UN	0.000870385	0.0870%	0.006402931	0.000005573	Exempt	0.000870385
717.02 ANTELOPE VALLEY UNION HIGH SCH.	0.099382585	9.9383%	0.006402931	0.000636340	Exempt	0.099382585
717.06 CO.SCH.SERV.FD - ANTELOPE VALLEY	0.000365094	0.0365%	0.006402931	0.000002338	Exempt	0.000365094
717.08 ANTELOPE VY.UN.HI.-K.P.S.-ELEM	0.048689311	4.8689%	0.006402931	0.000311754	Exempt	0.048689311
792.04 ANTELOPE VY.JT. COMMUNITY COLL.	0.027595942	2.7596%	0.006402931	0.000176695	Exempt	0.027595942
051.75 Waterworks Dist # 40 ACO FUND	0.000000000	0.0000%	0.006402931	0.000000000	0.000000000	0.004796770
Total	1.000000000	100.0000%	0.006402931	0.006402931	-0.004796770	1.000000000

(1) Current share as reflected in the Auditor's ATI distribution in AF 49. Must total 1.000000000.
 (2) Must total 100%.
 (3) Weighted average waterworks district share as verified by Auditor.
 (4) Must total share reflected in Column (3).
 (5) Reflects exemption for school entities and County general fund obligation for debt service and FFW.
 (6) Final share distributions to be reflected in tax transfer resolution.

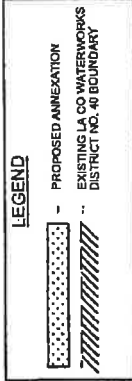
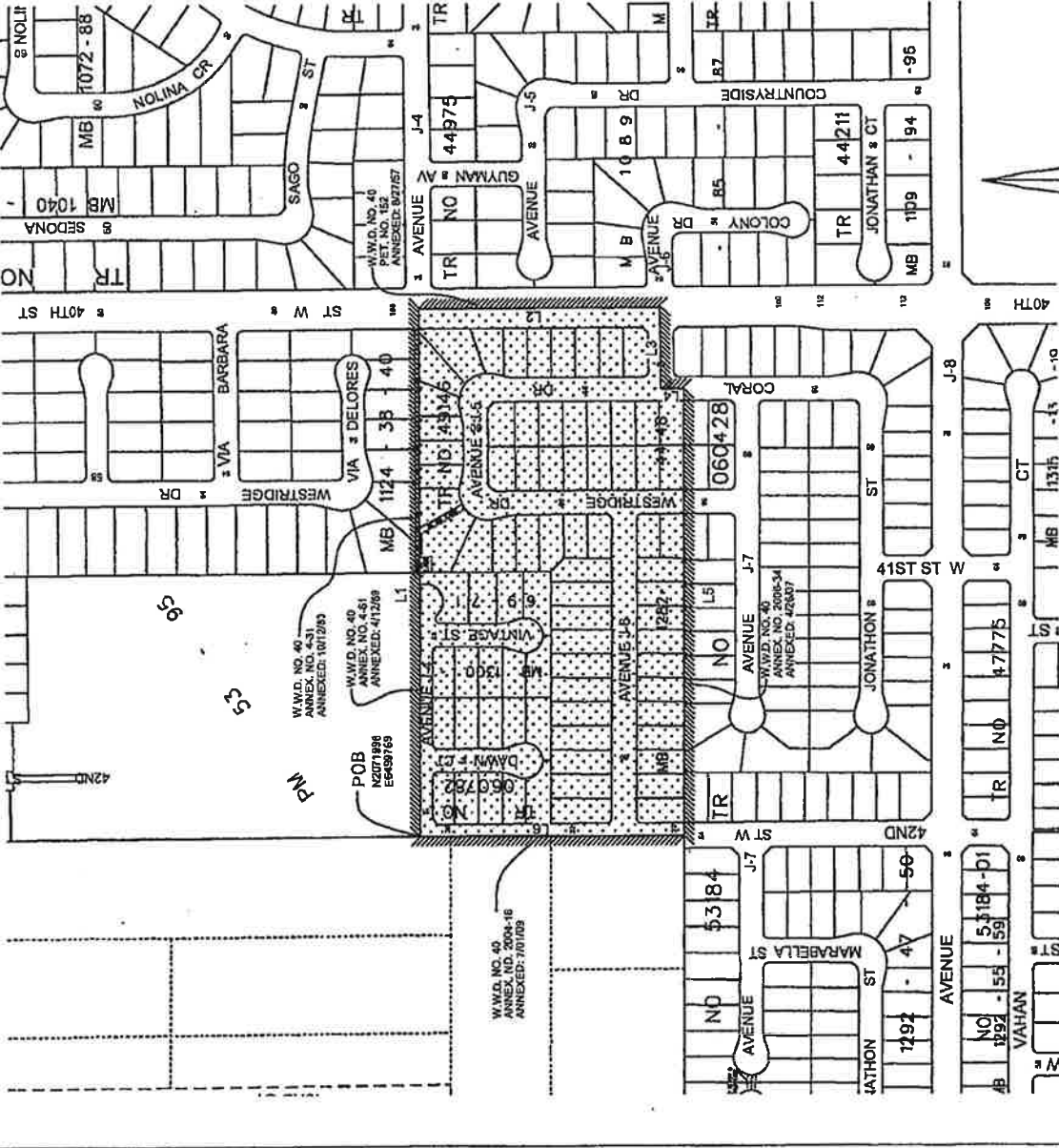
ANNEXATION 2012-09 (40-144 / 4-206) TO LOS ANGELES COUNTY WATERWORKS DISTRICT NO. 40 ANTELOPE VALLEY



LINE DATA

LINE	BEARING	DISTANCE
L1	S 89°52'34" E	1320.52'
L2	S 00°24'15" E	606.13'
L3	S 87°53'45" W	203.54'
L4	S 00°24'15" E	56.61'
L5	N 89°49'14" W	1116.72'
L6	N 02°25'32" W	663.18'

AP.N.	AP.N.	AP.N.	AP.N.	AP.N.
3153 071 001	3153 071 029	3153 071 049	3153 071 069	3153 071 089
3153 071 109	3153 071 129	3153 071 149	3153 071 169	3153 071 189
3153 071 209	3153 071 229	3153 071 249	3153 071 269	3153 071 289
3153 071 309	3153 071 329	3153 071 349	3153 071 369	3153 071 389
3153 071 409	3153 071 429	3153 071 449	3153 071 469	3153 071 489
3153 071 509	3153 071 529	3153 071 549	3153 071 569	3153 071 589
3153 071 609	3153 071 629	3153 071 649	3153 071 669	3153 071 689
3153 071 709	3153 071 729	3153 071 749	3153 071 769	3153 071 789
3153 071 809	3153 071 829	3153 071 849	3153 071 869	3153 071 889
3153 071 909	3153 071 929	3153 071 949	3153 071 969	3153 071 989



NOTE:
THIS MAP IS BASED UPON INFORMATION FROM THE COUNTY OF LOS ANGELES RECORDS. IT DOES NOT SHOW EXACT BOUNDARY LOCATIONS WHICH MUST BE DETERMINED BY CURRENT FIELD MEASUREMENTS.
DATA CONTAINED IN THIS MAP WAS PRODUCED IN WHOLE OR PART FROM THE LOS ANGELES COUNTY DEPARTMENT OF PUBLIC WORKS' DIGITAL DATABASE.

PORTION OF SEC. 24, T. 7 N. R. 13 W. S.B.M.

LOS ANGELES COUNTY DEPARTMENT OF PUBLIC WORKS
WATERWORKS DIVISION

ANNEXATION 2012-09 (40-144 / 4-206) PARCEL 1

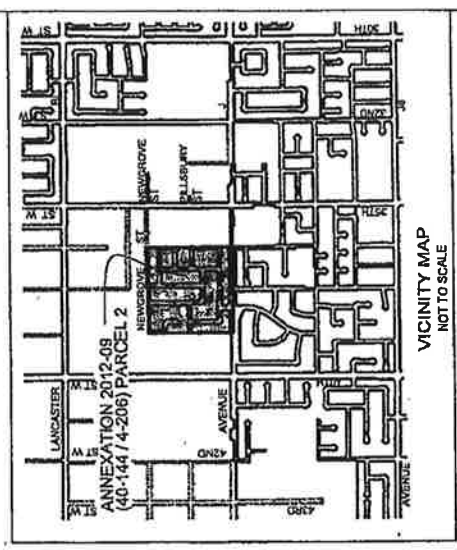
CITY OF LANCASTER
PREPARED BY: GRADIM
DATE: 03/12/2012
SCALE: 1" = 200'
S.D. 3

FIRST NAME: W.W.D. 2012-09, PARCEL 1
LAST NAME: W.W.D. 40

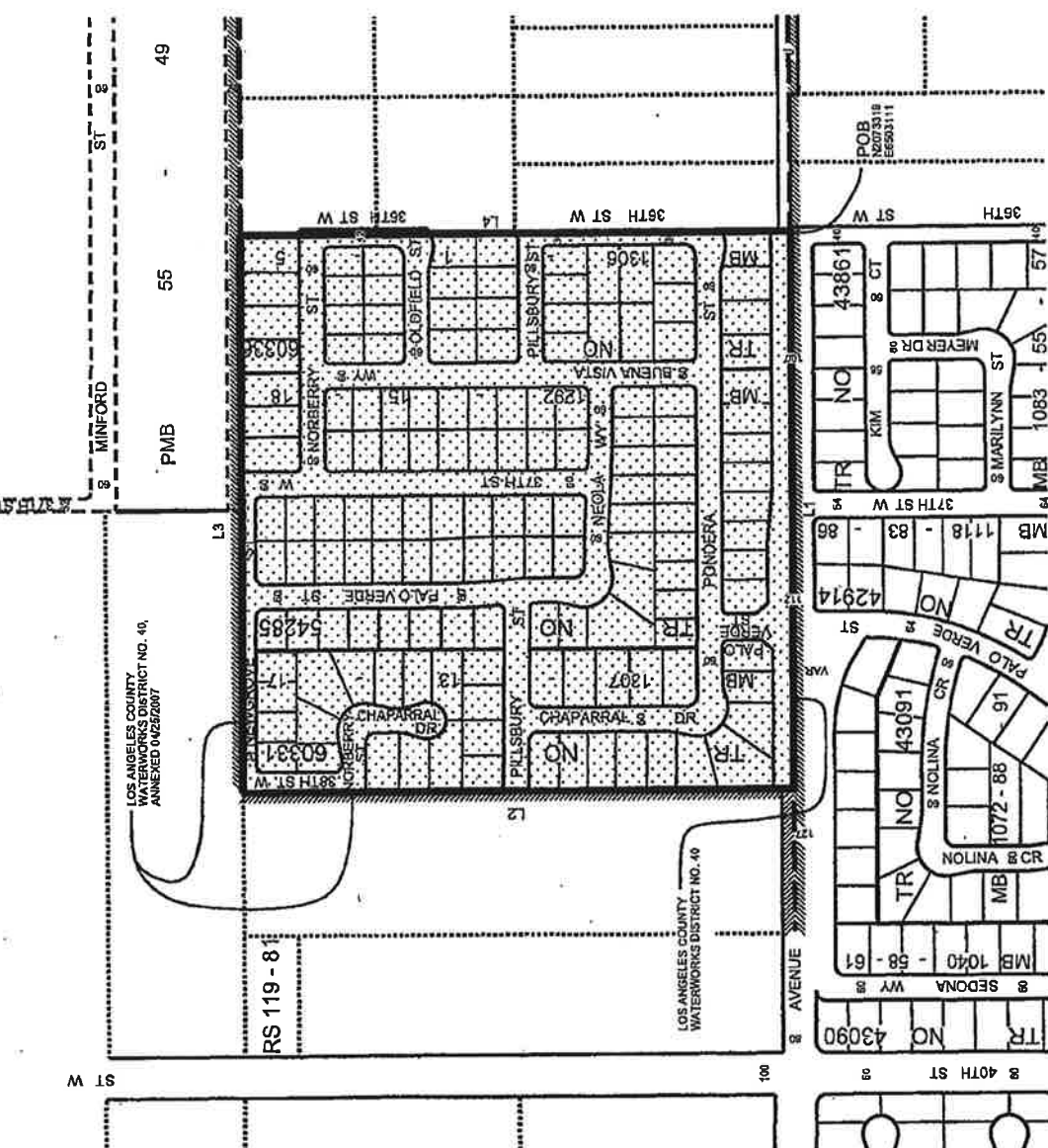
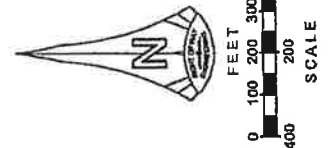
A.M.B. NO.: 3153
SPECIAL DISTRICT: 4015-A7, 4014-J7
T.G. PAGE: 19,84,40-1
PARCEL 1 AREA: 19,84,40-1
SHEET: 1 OF 5

ANNEXATION 2012-09 (40-144 / 4-206) TO
LOS ANGELES COUNTY WATERWORKS DISTRICT NO. 40
ANTELOPE VALLEY

5036
NO. 11
PM



A.P.N.	A.P.N.	A.P.N.	A.P.N.
3152041001	3152041002	3152041003	3152041004
3152041005	3152041006	3152041007	3152041008
3152041009	3152041010	3152041011	3152041012
3152041013	3152041014	3152041015	3152041016
3152041017	3152041018	3152041019	3152041020
3152041021	3152041022	3152041023	3152041024
3152041025	3152041026	3152041027	3152041028
3152041029	3152041030	3152041031	3152041032
3152041033	3152041034	3152041035	3152041036
3152041037	3152041038	3152041039	3152041040
3152041041	3152041042	3152041043	3152041044
3152041045	3152041046	3152041047	3152041048
3152041049	3152041050	3152041051	3152041052
3152041053	3152041054	3152041055	3152041056
3152041057	3152041058	3152041059	3152041060
3152041061	3152041062	3152041063	3152041064
3152041065	3152041066	3152041067	3152041068
3152041069	3152041070	3152041071	3152041072
3152041073	3152041074	3152041075	3152041076
3152041077	3152041078	3152041079	3152041080
3152041081	3152041082	3152041083	3152041084
3152041085	3152041086	3152041087	3152041088
3152041089	3152041090	3152041091	3152041092
3152041093	3152041094	3152041095	3152041096
3152041097	3152041098	3152041099	3152041100
3152041101	3152041102	3152041103	3152041104
3152041105	3152041106	3152041107	3152041108
3152041109	3152041110	3152041111	3152041112
3152041113	3152041114	3152041115	3152041116
3152041117	3152041118	3152041119	3152041120
3152041121	3152041122	3152041123	3152041124
3152041125	3152041126	3152041127	3152041128
3152041129	3152041130	3152041131	3152041132
3152041133	3152041134	3152041135	3152041136
3152041137	3152041138	3152041139	3152041140
3152041141	3152041142	3152041143	3152041144
3152041145	3152041146	3152041147	3152041148
3152041149	3152041150	3152041151	3152041152
3152041153	3152041154	3152041155	3152041156
3152041157	3152041158	3152041159	3152041160
3152041161	3152041162	3152041163	3152041164
3152041165	3152041166	3152041167	3152041168
3152041169	3152041170	3152041171	3152041172
3152041173	3152041174	3152041175	3152041176
3152041177	3152041178	3152041179	3152041180
3152041181	3152041182	3152041183	3152041184
3152041185	3152041186	3152041187	3152041188
3152041189	3152041190	3152041191	3152041192
3152041193	3152041194	3152041195	3152041196
3152041197	3152041198	3152041199	3152041200



LOS ANGELES COUNTY WATERWORKS DISTRICT NO. 40, ANNEXED 04/28/2007

LOS ANGELES COUNTY WATERWORKS DISTRICT NO. 40

LOS ANGELES COUNTY DEPARTMENT OF PUBLIC WORKS WATERWORKS DIVISION

ANNEXATION 2012-09 (40-144 / 4-206) PARCEL 2

CITY OF LANCASTER

PREPARED BY: MAJING TAN

DATE: 04/22/2012

SCALE: 1" = 200'

H.N. NO.: 363-235

PART NAME: WWD 2012-09, PARCEL 2

T.O. PAGE: 4015-AT

SPECIAL DISTRICT: DISTRICT NO. 40

A.M.B. NO.: 3153

PARCEL 2 AREA: 41.25 AC±

SHEET: 2 OF 5

S.D. 5

LINE DATA

LINE	BEARING	DISTANCE
L1	S 89°50'40"W	134.57
L2	N 00°35'26"W	135.74
L3	N 89°52'33"E	134.65
L4	S 00°22'34"E	133.00

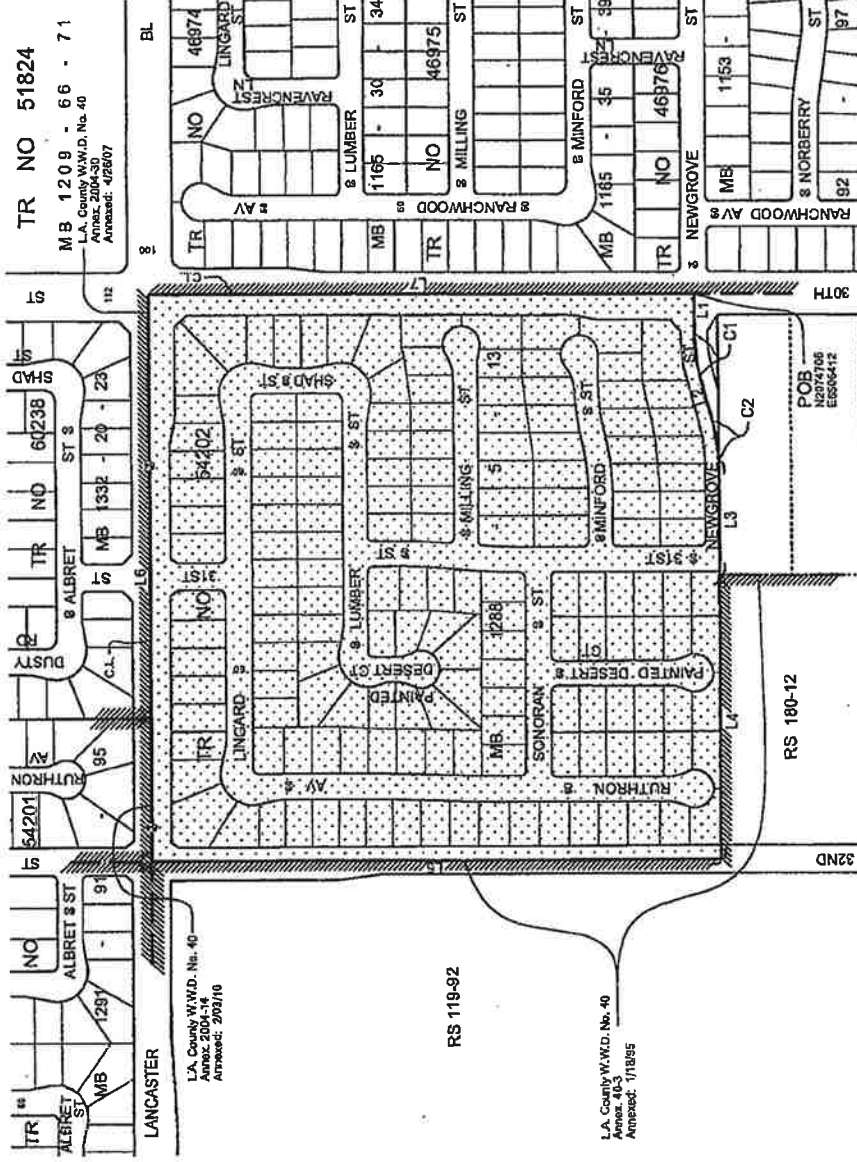
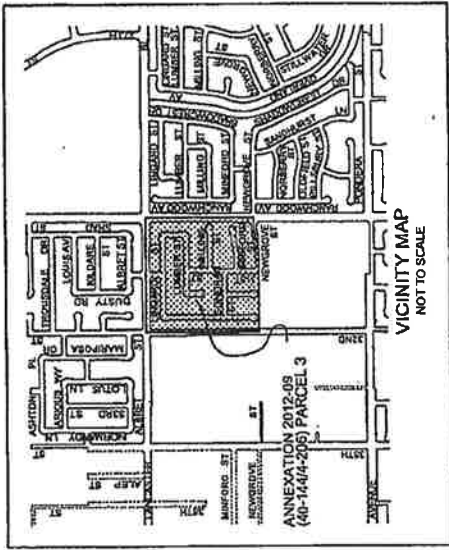
LEGEND

- PROPOSED ANNEXATION
- EXISTING LA CO WATERWORKS DISTRICT NO. 40 BOUNDARY

NOTE: THIS MAP IS BASED UPON INFORMATION FROM PUBLIC AND QUAS-PUBLIC RECORDS. IT DOES NOT SHOW EXACT BOUNDARY LOCATIONS WHICH MUST BE DETERMINED BY CURRENT FIELD MEASUREMENTS.

DATA CONTAINED IN THIS MAP WAS PRODUCED IN WHOLE OR PART FROM THE LOS ANGELES COUNTY DEPARTMENT OF PUBLIC WORKS' DIGITAL DATABASE

ANNEXATION 2012-09 (40-144/4-206) TO
LOS ANGELES COUNTY WATERWORKS DISTRICT NO. 40
ANTELOPE VALLEY



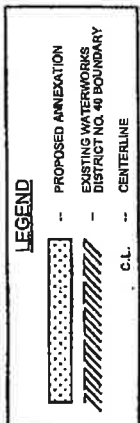
CURVE DATA

CURVE	CENTRAL ANGLE	RADIUS	LENGTH
C1	15°07'51"	380.05'	102.20'
C2	15°05'54"	380.05'	102.20'

LINE DATA

LINE	BEARING	DISTANCE
L1	R 89°59'37" W	89.00'
L2	S 74°57'05" W	110.20'
L3	S 89°57'50" W	263.04'
L4	S 89°56'50" W	664.06'
L5	R 103°34'11" E	1325.40'
L7	S 0°45'50" W	1274.02'

A.L.N.	A.L.N.	A.L.N.	A.L.N.	A.L.N.	A.L.N.	A.L.N.	A.L.N.	A.L.N.	A.L.N.
3153 072 001	3153 072 001	3153 072 001	3153 072 001	3153 072 001	3153 072 001	3153 072 001	3153 072 001	3153 072 001	3153 072 001
3153 072 002	3153 072 002	3153 072 002	3153 072 002	3153 072 002	3153 072 002	3153 072 002	3153 072 002	3153 072 002	3153 072 002
3153 072 003	3153 072 003	3153 072 003	3153 072 003	3153 072 003	3153 072 003	3153 072 003	3153 072 003	3153 072 003	3153 072 003
3153 072 004	3153 072 004	3153 072 004	3153 072 004	3153 072 004	3153 072 004	3153 072 004	3153 072 004	3153 072 004	3153 072 004
3153 072 005	3153 072 005	3153 072 005	3153 072 005	3153 072 005	3153 072 005	3153 072 005	3153 072 005	3153 072 005	3153 072 005
3153 072 006	3153 072 006	3153 072 006	3153 072 006	3153 072 006	3153 072 006	3153 072 006	3153 072 006	3153 072 006	3153 072 006
3153 072 007	3153 072 007	3153 072 007	3153 072 007	3153 072 007	3153 072 007	3153 072 007	3153 072 007	3153 072 007	3153 072 007
3153 072 008	3153 072 008	3153 072 008	3153 072 008	3153 072 008	3153 072 008	3153 072 008	3153 072 008	3153 072 008	3153 072 008
3153 072 009	3153 072 009	3153 072 009	3153 072 009	3153 072 009	3153 072 009	3153 072 009	3153 072 009	3153 072 009	3153 072 009
3153 072 010	3153 072 010	3153 072 010	3153 072 010	3153 072 010	3153 072 010	3153 072 010	3153 072 010	3153 072 010	3153 072 010
3153 072 011	3153 072 011	3153 072 011	3153 072 011	3153 072 011	3153 072 011	3153 072 011	3153 072 011	3153 072 011	3153 072 011
3153 072 012	3153 072 012	3153 072 012	3153 072 012	3153 072 012	3153 072 012	3153 072 012	3153 072 012	3153 072 012	3153 072 012
3153 072 013	3153 072 013	3153 072 013	3153 072 013	3153 072 013	3153 072 013	3153 072 013	3153 072 013	3153 072 013	3153 072 013
3153 072 014	3153 072 014	3153 072 014	3153 072 014	3153 072 014	3153 072 014	3153 072 014	3153 072 014	3153 072 014	3153 072 014
3153 072 015	3153 072 015	3153 072 015	3153 072 015	3153 072 015	3153 072 015	3153 072 015	3153 072 015	3153 072 015	3153 072 015
3153 072 016	3153 072 016	3153 072 016	3153 072 016	3153 072 016	3153 072 016	3153 072 016	3153 072 016	3153 072 016	3153 072 016
3153 072 017	3153 072 017	3153 072 017	3153 072 017	3153 072 017	3153 072 017	3153 072 017	3153 072 017	3153 072 017	3153 072 017
3153 072 018	3153 072 018	3153 072 018	3153 072 018	3153 072 018	3153 072 018	3153 072 018	3153 072 018	3153 072 018	3153 072 018
3153 072 019	3153 072 019	3153 072 019	3153 072 019	3153 072 019	3153 072 019	3153 072 019	3153 072 019	3153 072 019	3153 072 019
3153 072 020	3153 072 020	3153 072 020	3153 072 020	3153 072 020	3153 072 020	3153 072 020	3153 072 020	3153 072 020	3153 072 020



NOTE:
THIS MAP IS BASED UPON INFORMATION FROM PUBLIC AND QUASI-PUBLIC RECORDS. IT DOES NOT SHOW EXACT BOUNDARY LOCATIONS WHICH MUST BE DETERMINED BY CURRENT FIELD MEASUREMENTS.
DATA CONTAINED IN THIS MAP WAS PRODUCED IN WHOLE OR PART FROM THE LOS ANGELES COUNTY DEPARTMENT OF PUBLIC WORKS' DIGITAL DATABASE.

PORTION OF SEC 18, T7 N, R12 W, S.B.M.
LOS ANGELES COUNTY DEPARTMENT OF PUBLIC WORKS
WATERWORKS DIVISION

ANNEXATION 2012-09 (40-144/4-206) PARCEL 3

CITY OF LANCASTER

DATE: 3/12/2012
SCALE: 1" = 200'

PREPARED BY: D. VERA
N.A. NO.: 383-279
T.G. PAGE: 3 OF 5

PART NAME: WWD 2012-09 PARCEL 3
SPECIAL DISTRICT: L.A. COUNTY W.W.D. 40
A.M.B. NO.: 4015-SB & CO
AREA: 40.284-AC
SHEET: 3 OF 5

TR NO 51824
MB 1209 - 66 - 71
L.A. County W.W.D. No. 40
Annex: 2004-30
Annexed: 4/28/07

TR NO 64238
ST 3
MB 1332 - 20 - 23

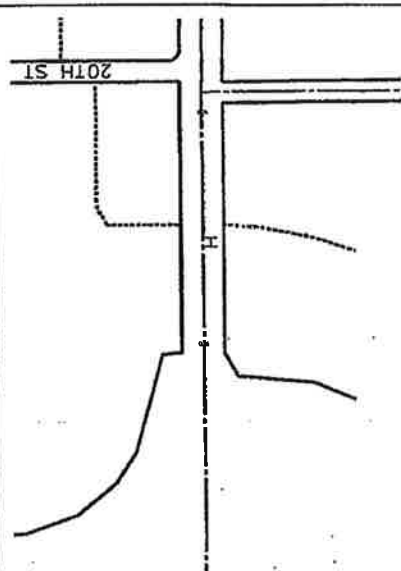
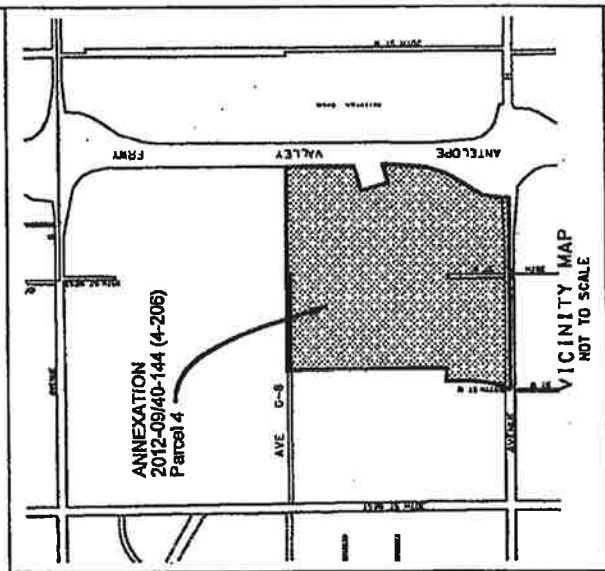
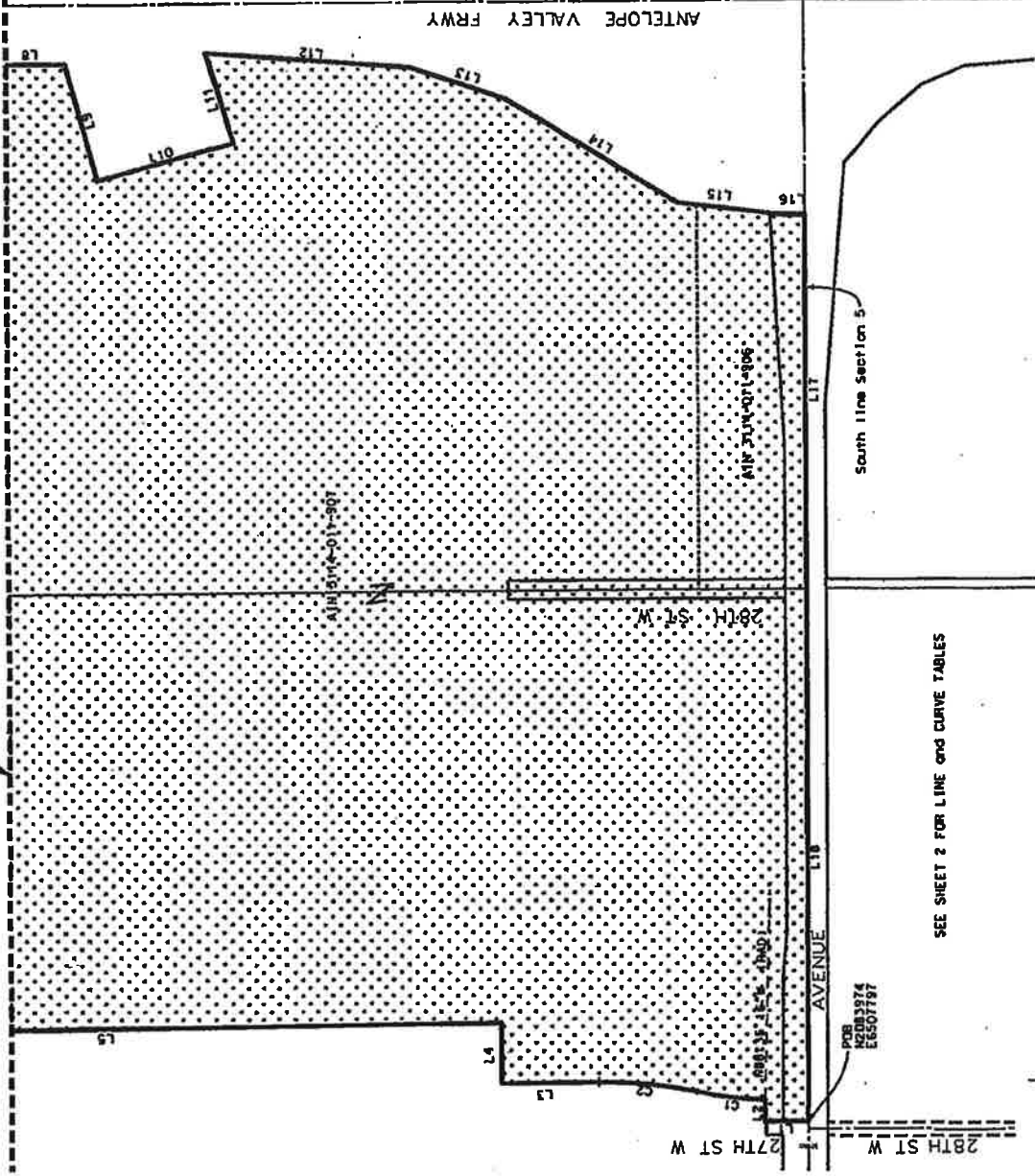
LANCASTER
L.A. County W.W.D. No. 40
Annex: 2004-14
Annexed: 2/29/10

RS 119-92

L.A. County W.W.D. No. 40
Annex: 1/18/95

ANNEXATION 2012-09 (40-144/4-206) TO
LOS ANGELES COUNTY WATERWORKS DISTRICT NO. 40
ANTELOPE VALLEY

MATCH LINE SEE SHEET 2



SEE SHEET 2 FOR LINE AND CURVE TABLES



DISCLAIMER

THIS MAP IS BASED UPON INFORMATION FROM PUBLIC RECORDS, SURVEY RECORDS AND FIELD MEASUREMENTS. THE BOUNDARIES AND LOCATIONS WHICH ARE SHOWN ON THIS MAP ARE NOT GUARANTEED BY THE ENGINEER AND MUST BE DETERMINED BY CURRENT FIELD MEASUREMENTS.

DATA CONTAINED IN THIS MAP WAS PRODUCED IN WHOLE OR PART FROM THE LOS ANGELES COUNTY DEPARTMENT OF PUBLIC WORKS' DIGITAL DATABASE.

LEGEND:

-  PROPOSED ANNEXATION
-  EXISTING
-  WATERWORKS DISTRICT NO. 40 BOUNDARY
-  CENTERLINE
-  CITY BOUNDARY

PORTION OF SECTION 5, TOWNSHIP 1 NORTH, RANGE 12 WEST, S.B.M.	
LOS ANGELES COUNTY DEPARTMENT OF PUBLIC WORKS	
WATERWORKS DIVISION	
ANNEXATION 2012-09 (40-144/4-206) PARCEL 4 S.D. 5	
CITY OF LANCASTER	SCALE: 1" = 200'
PREPARED BY: RYGLORUS	DATE: 03/05/2012
PROJECT NO: 2012-09 PARCEL 4	T.G. PAGE: 4
SPECIAL DISTRICT: 40	R.N. NO. 1: 3114-011
BLK. NO. 40	PARCEL 4: 130-412-00
	SHEET: 4 OF 5

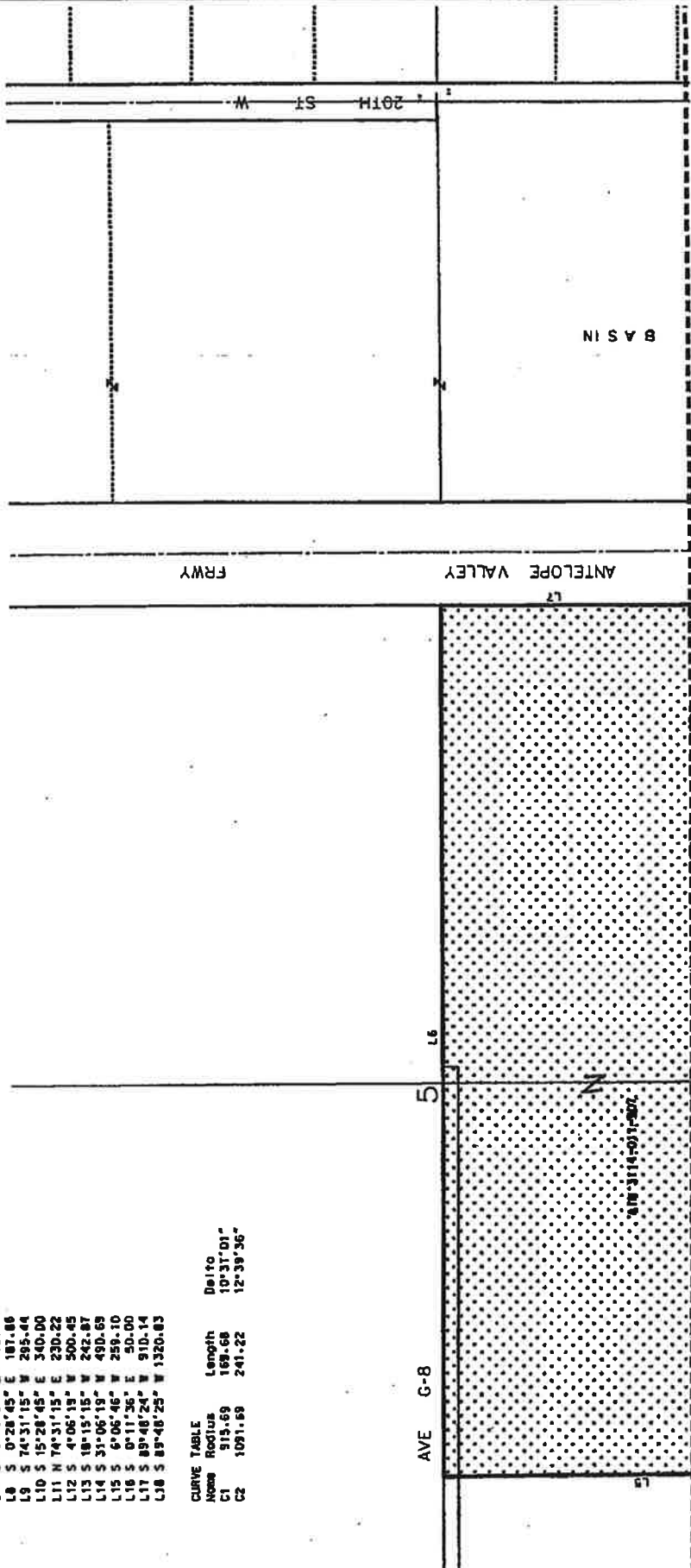
ANNEXATION 2012-09 (40-14414-206) TO
LOS ANGELES COUNTY WATERWORKS DISTRICT NO. 40
ANTELOPE VALLEY

LINE TABLE

Name	Direction	Length
L1	N 0°04'59" W	116.83
L2	N 89°55'01" E	54.00
L3	N 0°37'51" W	235.00
L4	N 89°55'01" E	146.85
L5	N 0°37'51" W	1861.51
L6	N 89°50'05" E	2370.03
L7	S 0°16'01" E	632.12
L8	S 0°28'45" E	187.86
L9	S 74°31'15" W	295.44
L10	S 15°28'45" E	340.00
L11	N 74°31'15" E	230.22
L12	S 4°06'19" W	500.45
L13	S 18°15'15" W	242.87
L14	S 31°06'19" W	490.69
L15	S 6°06'46" W	259.10
L16	S 0°11'36" E	50.00
L17	S 89°48'24" W	910.14
L18	S 89°48'25" W	1320.83

CURVE TABLE

Name	Radius	Length	Delta
C1	915.69	169.68	10°31'01"
C2	1091.69	241.22	12°39'36"



MATCH LINE SEE SHEET 1

DISCLAIMER

THIS MAP IS BASED UPON INFORMATION FROM THE LOS ANGELES COUNTY PUBLIC WORKS DISTRICT NO. 40. THE MAP DOES NOT SHOW EXACT BOUNDARY LOCATIONS WHICH MUST BE DETERMINED BY CURRENT FIELD MEASUREMENTS.

DATA CONTAINED IN THIS MAP WAS PRODUCED IN WHOLE OR PART FROM THE LOS ANGELES COUNTY DEPARTMENT OF PUBLIC WORKS' DIGITAL DATABASE.

LEGEND:

- PROPOSED ANNEXATION
- EXISTING CENTERLINE
- CITY BOUNDARY

PORTION OF SECTION 5, TOWNSHIP 7 NORTH, RANGE 12 WEST, S.B.M.

LOS ANGELES COUNTY DEPARTMENT OF PUBLIC WORKS
WATERWORKS DIVISION

ANNEXATION 2012-09 (40-14414-206) PARCEL 4 S.D. 5

CITY OF LANCASTER

PREPARED BY: RUGLOBUS
DATE: 03/05/2012
SCALE: 1" = 200'

PART NAME: 4014-206-03-02-03
BRD 2012-09 PARCEL 4
SPECIAL DISTRICT: 359-211
U.L.S. NO.: 138-412-AC
BRD NO.: 40

SHEET 1 OF 5

