

RESOLUTION NO. 13-55

A RESOLUTION OF THE CITY COUNCIL OF THE CITY OF LANCASTER, CALIFORNIA, AUTHORIZING THE APPROPRIATION AND USE OF BIOLOGICAL IMPACT FEE FUNDS FOR THE ACQUISITION OF 160 ACRES OF CONSERVATION PROPERTY

WHEREAS, the City Council adopted Ordinance No. 848 establishing Chapter 15.66 of the Lancaster Municipal Code, Biological Impact Fee, on October 28, 2005, to address cumulative impacts and incremental loss of desert habitat, and established a biological impact fee of \$770 per acre; and

WHEREAS, the funds collected as a result of this fee can only be utilized for specific purposes as identified in the Ordinance; and

WHEREAS, pursuant to Section 15.66.070.A of the Lancaster Municipal Code, an allowable use of biological impact fees is the acquisition of mitigation land; and

WHEREAS, Wildlands is a habitat development and land management company that establishes mitigation banks and conservation banks throughout the western United States; and

WHEREAS, Wildlands has identified a 160-acre parcel of desert habitat to the northeast of Edwards AFB with high biological value with respect to several sensitive plant species; and

WHEREAS, this property would be held as conservation habitat in perpetuity, meeting not only the objective of habitat conservation but helping to preserve the long-term mission of Edwards Air Force Base by providing a buffer for its operations;

NOW, THEREFORE, BE IT RESOLVED:

The City Council hereby authorizes the funding for the purchase of 160 acres of conservation property by Wildlands, and appropriate \$464,000 from the Biological Impact Fee fund balance to account no. 224-4520-912 Property Acquisitions.

PASSED, APPROVED and ADOPTED this _____ day of _____, 2013, by the following vote:

AYES:

NOES:

ABSTAIN:

ABSENT:

ATTEST:

APPROVED:

GERI K. BRYAN, CMC
City Clerk
City of Lancaster

R. REX PARRIS
Mayor
City of Lancaster

STATE OF CALIFORNIA)
COUNTY OF LOS ANGELES) ss
CITY OF LANCASTER)

CERTIFICATION OF RESOLUTION
CITY COUNCIL

I, _____, _____ City of Lancaster, California, do hereby certify that this is a true and correct copy of the original Resolution No. 13-55, for which the original is on file in my office.

WITNESS MY HAND AND THE SEAL OF THE CITY OF LANCASTER, on this _____ day of _____.

(seal)



ATTACHMENT II

**BARSTOW WOOLY SUNFLOWER
PRESERVE**

CONSERVATION ANALYSIS

APN:

0502-201-05

FOR THE

CITY OF LANCASTER

Prepared by:

Wildlands
3855 Atherton Road
Rocklin, CA 95765
Tel: (916) 435-3555
Fax: (916) 435-3556
Website: www.wildlandsinc.com

August 2013

TABLE OF CONTENTS

Preserve Information 1

Geographic Analysis 1

Continuity Analysis/Adjacency..... 2

Biological Analysis 2

Conclusion/Summary 3

References..... 3

LIST OF FIGURES

- Figure 1. Location
- Figure 2. USGS 7.5' Quadrangle
- Figure 3. West Mojave Desert Coordinated Management Plan
- Figure 4. Regional Conservation Analysis
- Figure 5. Desert Tortoise Recovery Unit
- Figure 6. Mohave Ground-Squirrel Populations
- Figure 7. CNDDDB Occurrences
- Figure 8. USGS Desert Tortoise Model
- Figure 9. Regional Land Ownership and Protected Environmental Zones
- Figure 10. Plant Community Directional Photo Points and Field Data (APN: 0502-201-05)

LIST OF ACRONYMS AND EXPLANATIONS

ACEC	Areas of Critical Environmental Concern
BLM	Bureau of Land Management
BWSP	Barstow Wooly Sunflower Preserve
CNDDDB	California Natural Diversity Database
DWMA	Desert Wildlife Management Area
Preserve	Barstow Wooly Sunflower Preserve
USGS	United States Geological Survey

Barstow Woolly Sunflower Preserve

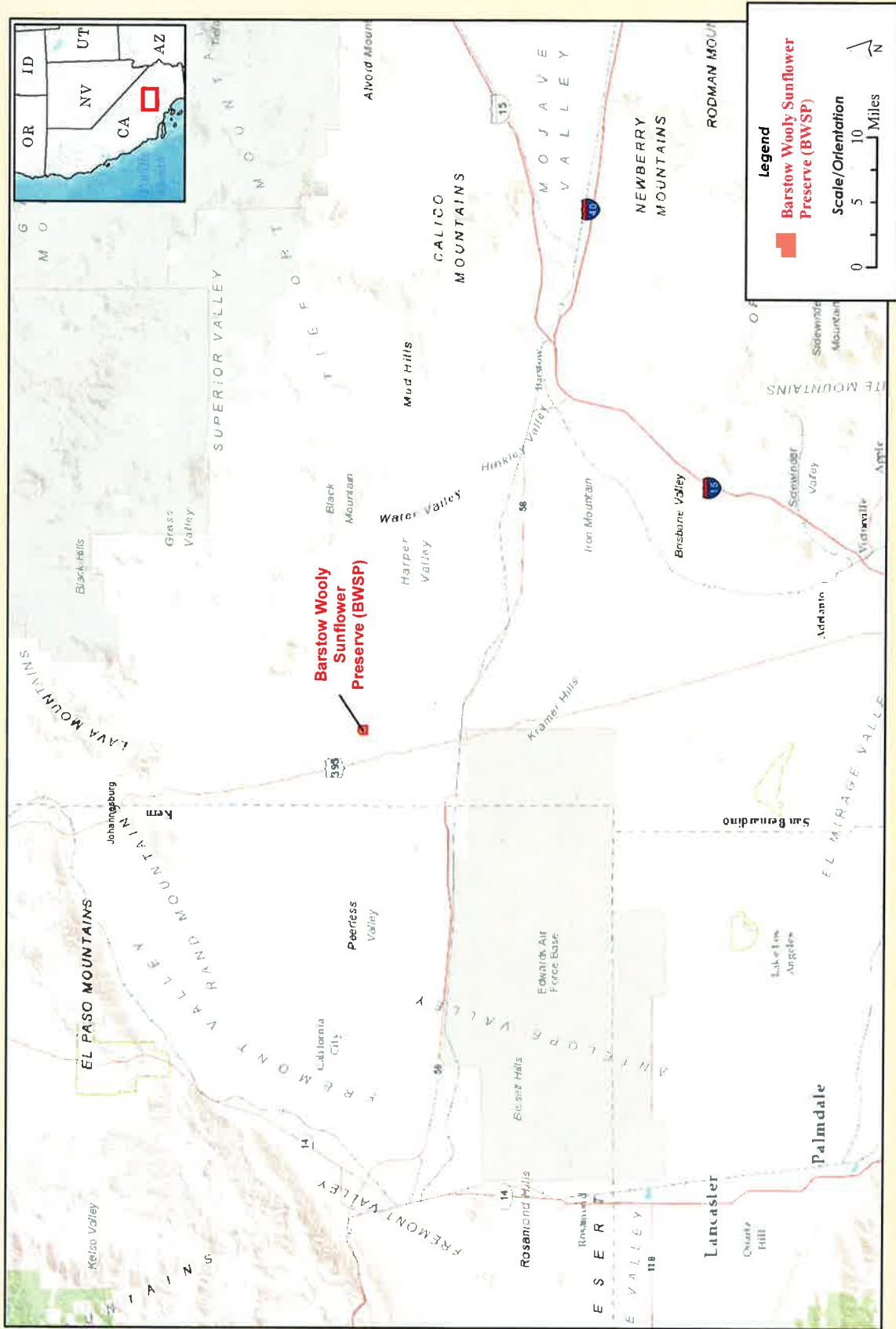


Figure 1 - Location
 Barstow Woolly Sunflower Preserve
 Conservation Analysis - August 2013



Barstow Woolly Sunflower Preserve

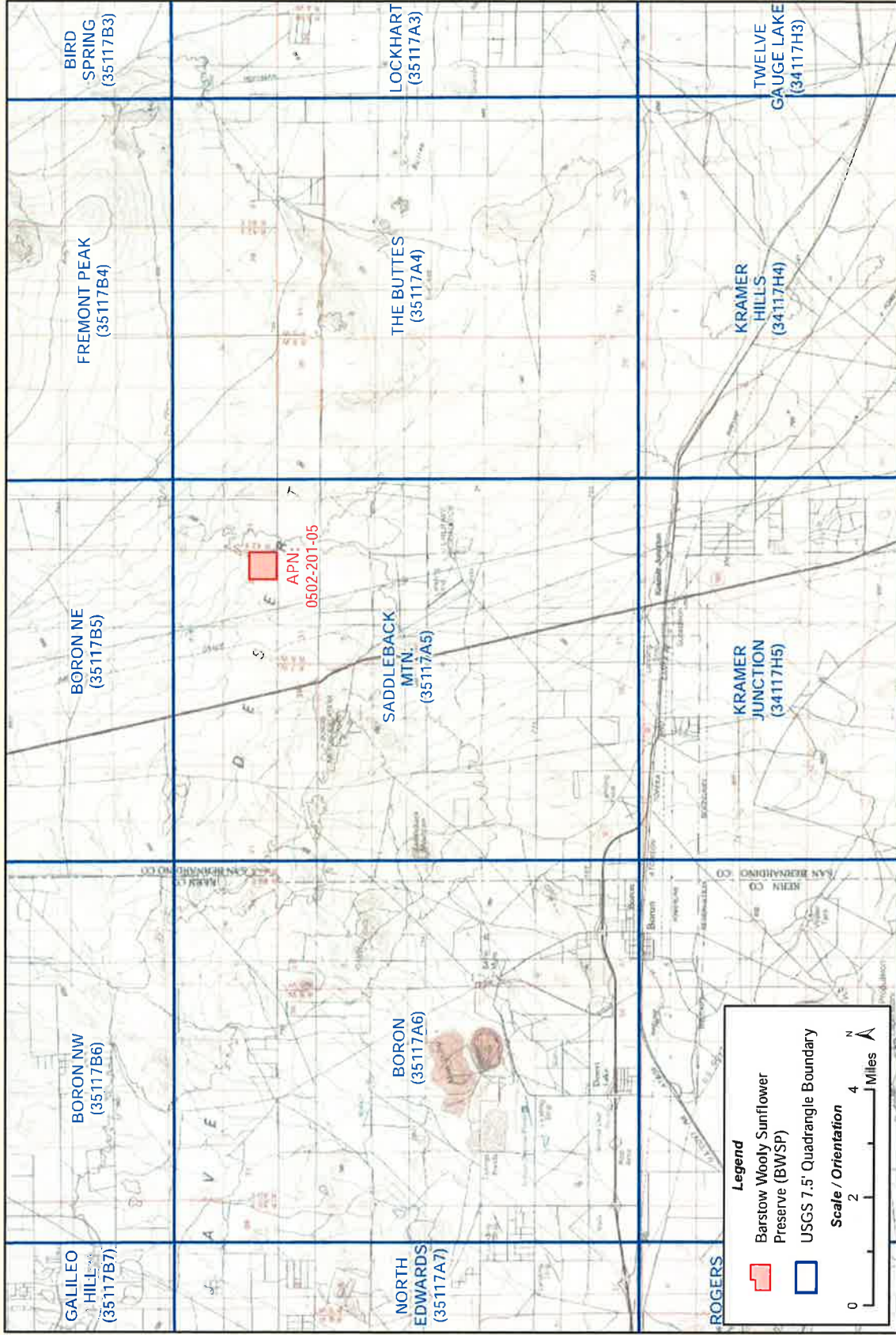


Figure 2 - USGS 7.5' Quadrangle Barstow Woolly Sunflower Preserve Conservation Analysis - August 2013

Barstow Woolly Sunflower Preserve

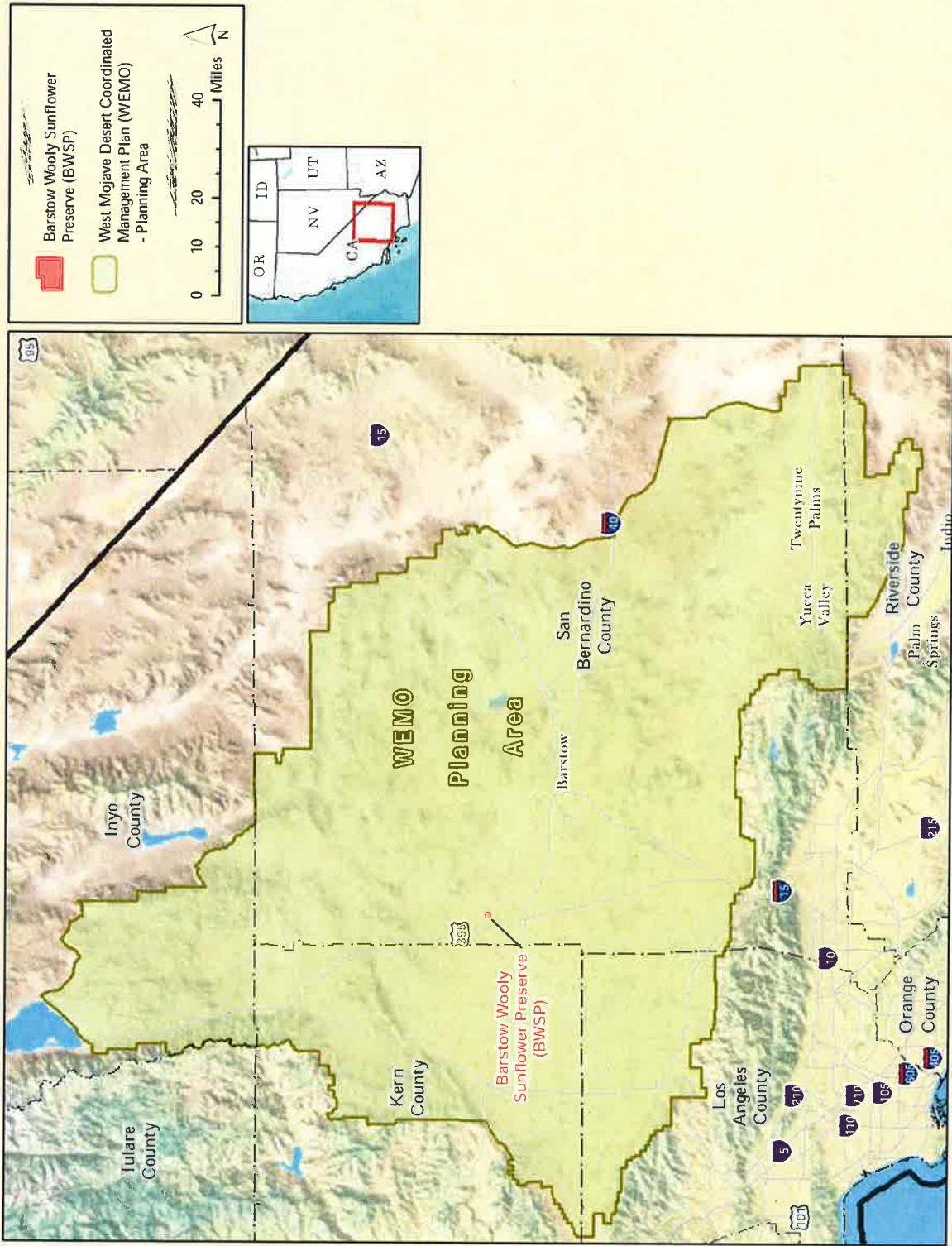
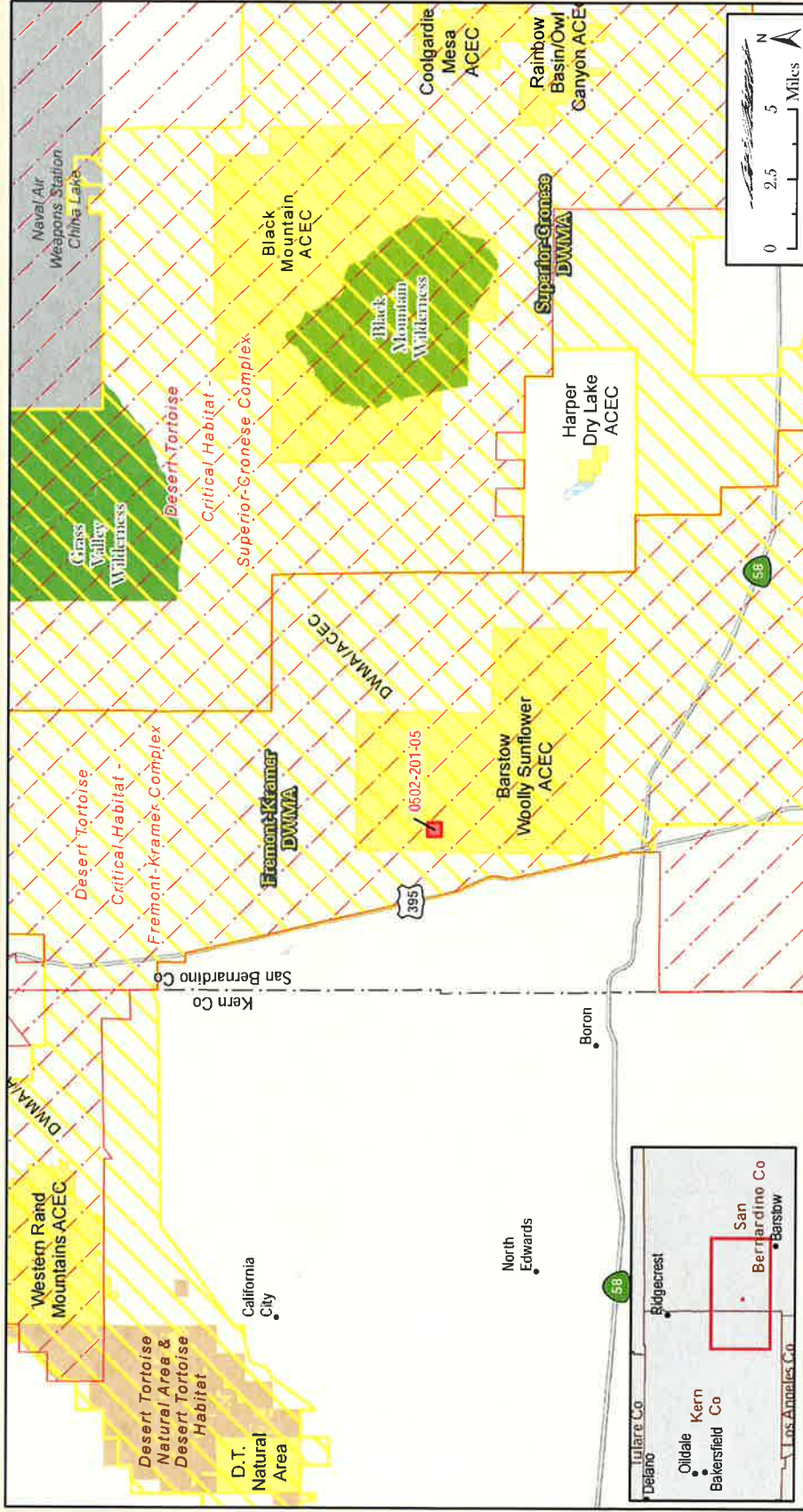


Figure 3 - West Mojave Desert Coordinated Management Plan
 Barstow Woolly Sunflower Preserve
 Conservation Analysis - August 2013

Barstow Woolly Sunflower Preserve



Barstow Woolly Sunflower Preserve (BWSP)

BLM Areas of Critical Environmental Concern (ACEC)⁽¹⁾

Desert Wildlife Management Area (DWMA)

Desert Tortoise Critical Habitat⁽²⁾

Desert Tortoise Natural Area (BLM) and Habitat (CDFG)⁽³⁾

Naval Air Weapons Station China Lake⁽⁴⁾

Wilderness Areas (WA)⁽⁴⁾

- Black Mountain Wilderness
- Grass Valley Wilderness

(1) U.S. Bureau of Land Management, CA State Office (2) US Fish and Wildlife Service (3) California Protected Areas Database (CPAD), November 2011. (4) Wilderness Institute, University of Montana, December 2011.

Figure 4 - Regional Conservation Analysis
 Barstow Woolly Sunflower Preserve
 Conservation Analysis - August 2013



Barstow Woolly Sunflower Preserve

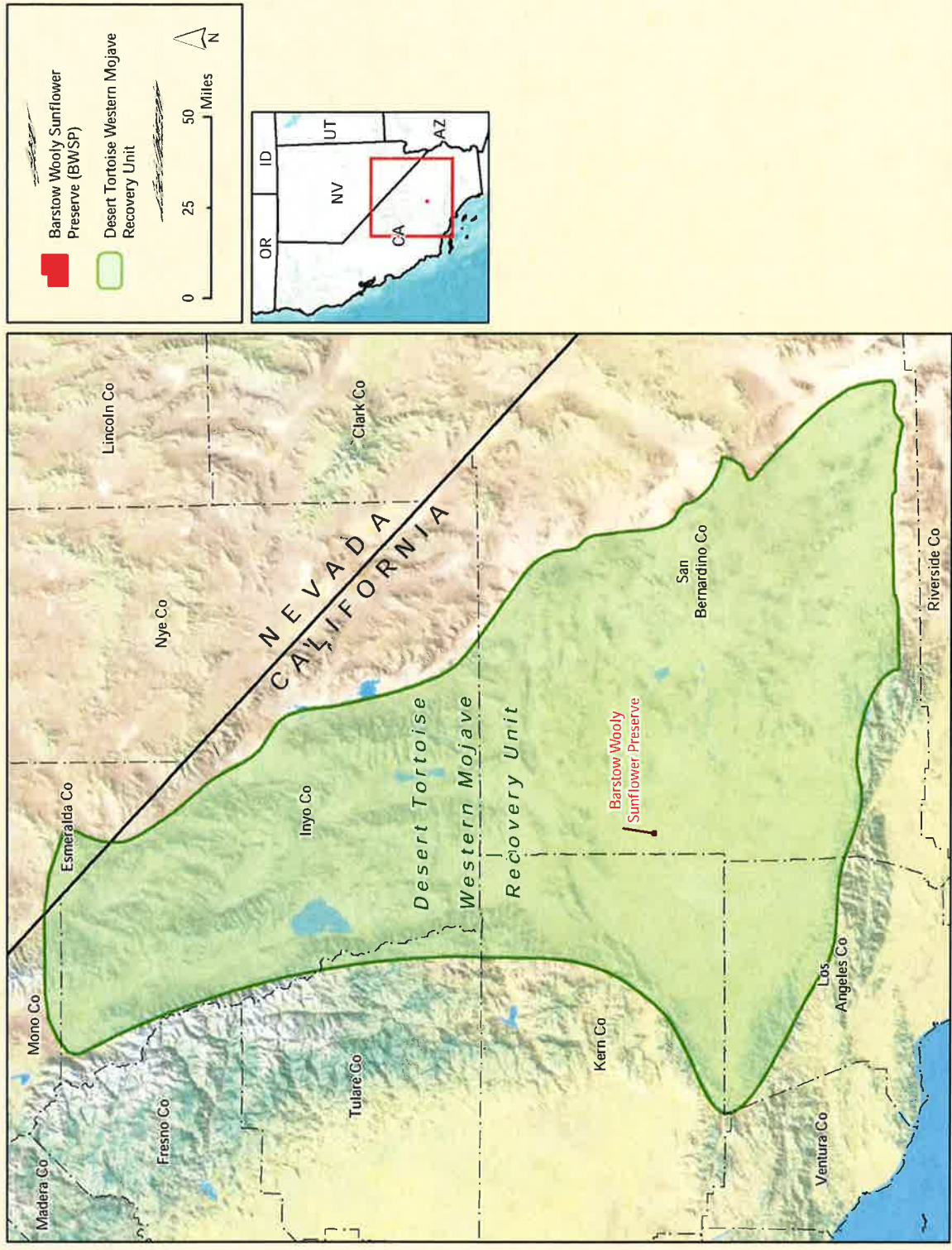
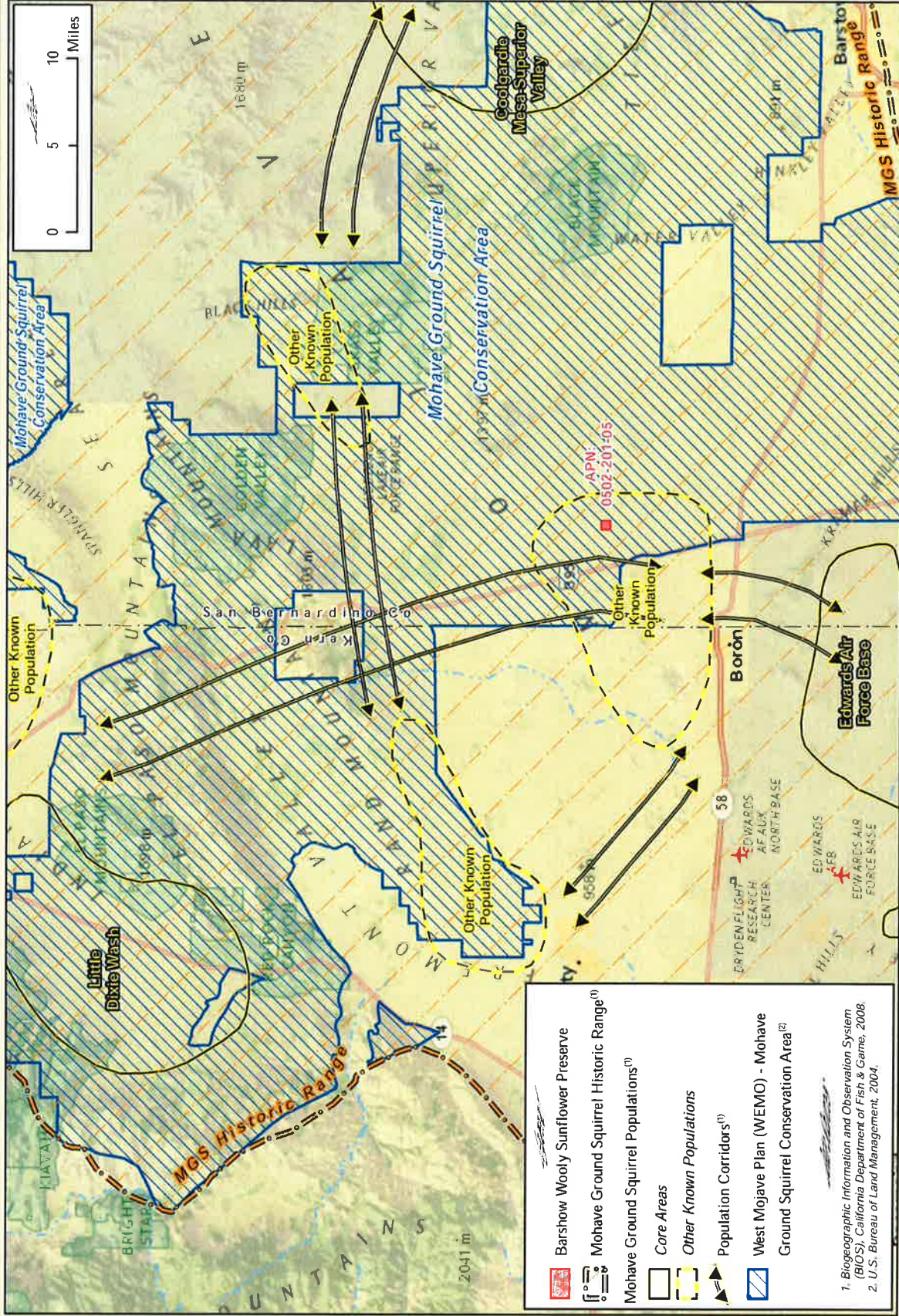


Figure 5 - Desert Tortoise Recovery Unit
 Barstow Woolly Sunflower Preserve
 Conservation Analysis - August 2013

Barstow Woolly Sunflower Preserve



1. Biogeographic Information and Observation System (BIOS), California Department of Fish & Game, 2008.
 2. U.S. Bureau of Land Management, 2004.

Figure 6 - Mohave Ground-Squirrel Populations Barstow Woolly Sunflower Preserve Conservation Analysis - August 2013

Barstow Woolly Sunflower Preserve

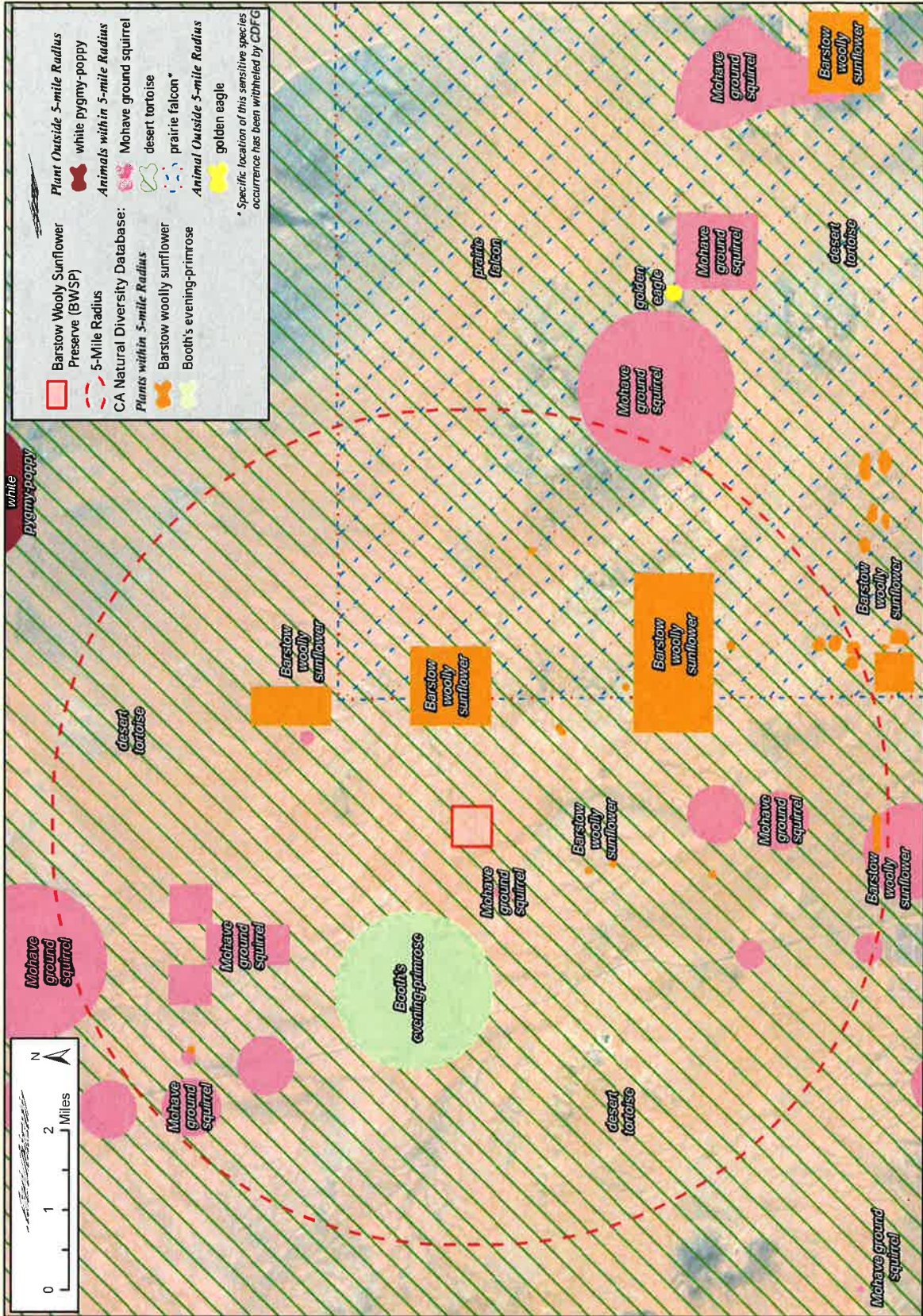


Figure 7 - CNDDDB Occurrences
 Barstow Woolly Sunflower Preserve
 Conservation Analysis - August 2013

Barstow Woolly Sunflower Preserve

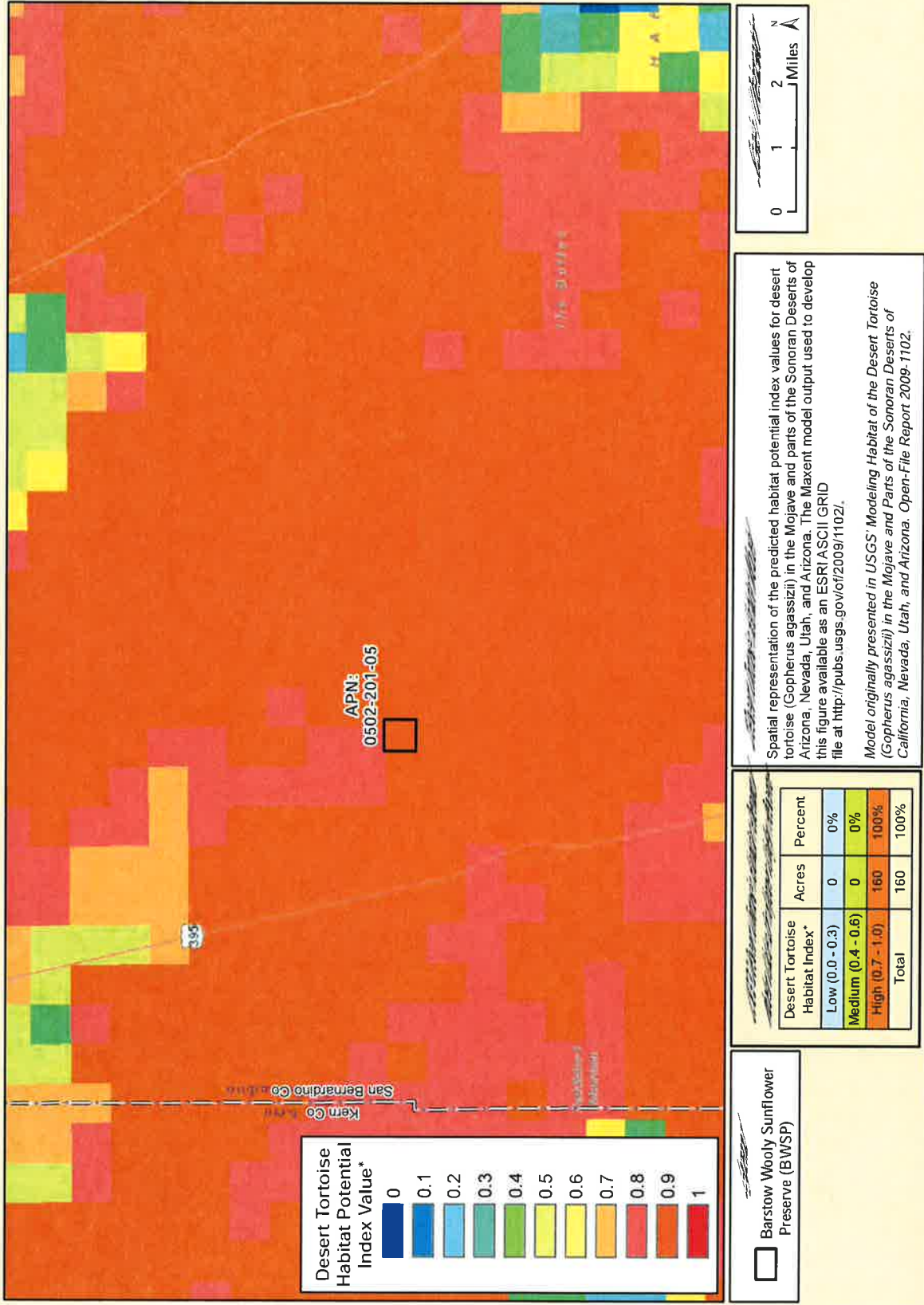


Figure 8 - USGS Desert Tortoise Model
Barstow Woolly Sunflower Preserve
Conservation Analysis - August 2013



Barstow Woolly Sunflower Preserve

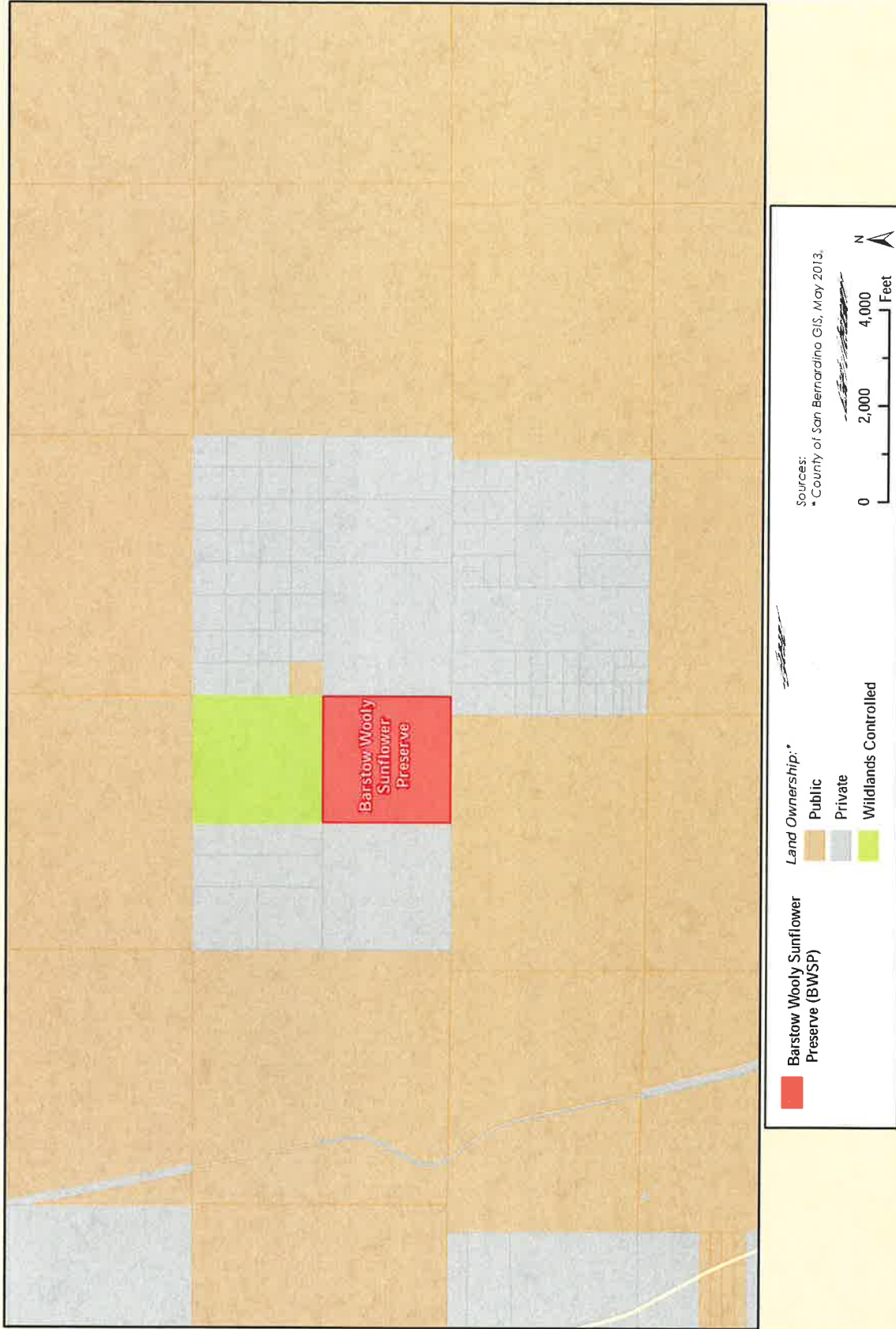


Figure 9 - Regional Land Ownership and Protected Environmental Zones
Barstow Woolly Sunflower Preserve
Conservation Analysis - August 2013

Barstow Woolly Sunflower Preserve

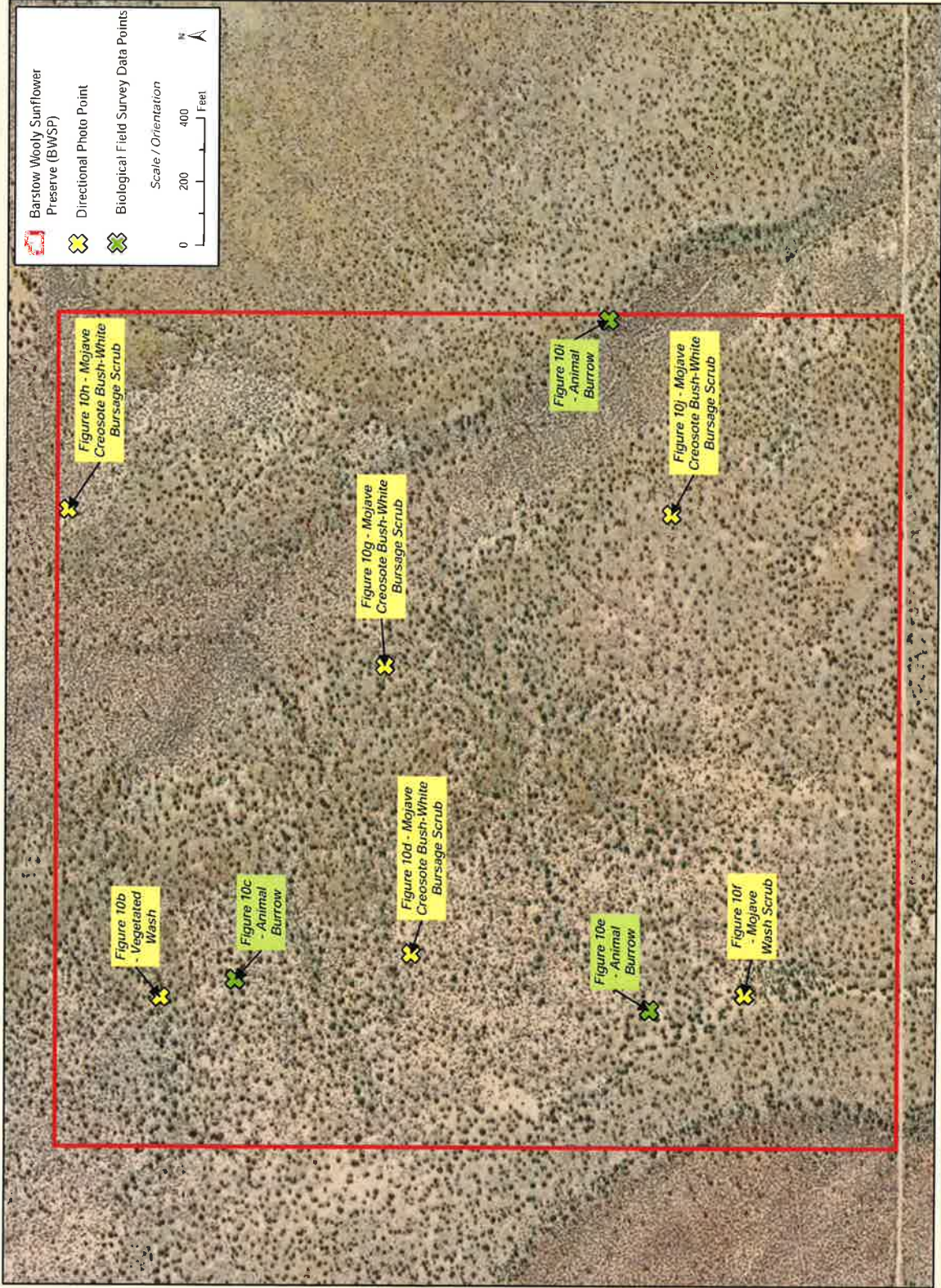


Figure 10a - Plant Community Directional Photo Points and Field Data
 Barstow Woolly Sunflower Preserve
 Conservation Analysis - August 2013

Barstow Woolly Sunflower Preserve



North



East



South



West

Figure 10b - Vegetated Wash
Barstow Woolly Sunflower Preserve
Conservation Analysis - August 2013

Barstow Woolly Sunflower Preserve



Figure 10c - Animal Burrow
Barstow Woolly Sunflower Preserve
Conservation Analysis - August 2013

Barstow Woolly Sunflower Preserve



North



East



South



West

Figure 10d - Mojave Creosote Bush-White Bursage Scrub
Barstow Woolly Sunflower Preserve
Conservation Analysis - August 2013



Figure 10e - Animal Burrow
Barstow Woolly Sunflower Preserve
Conservation Analysis - August 2013

Barstow Woolly Sunflower Preserve



North



East



South



West

Figure 10f - Mojave Wash Scrub
Barstow Woolly Sunflower Preserve
Conservation Analysis - August 2013

Barstow Woolly Sunflower Preserve



North



East



South



West

Figure 10g - Mojave Creosote Bush-White Bursage Scrub
Barstow Woolly Sunflower Preserve
Conservation Analysis - August 2013

Barstow Woolly Sunflower Preserve



North



East



South



West

Figure 10h - Mojave Creosote Bush-White Bursage Scrub
Barstow Woolly Sunflower Preserve
Conservation Analysis - August 2013

Barstow Woolly Sunflower Preserve



Figure 10j - Animal Burrow
Barstow Woolly Sunflower Preserve
Conservation Analysis - August 2013

Barstow Woolly Sunflower Preserve



North



East



South



West

Figure 10j - Mojave Creosote Bush-White Bursage Scrub
Barstow Woolly Sunflower Preserve
Conservation Analysis - August 2013