

**EXHIBIT A**  
**ACCEPTANCE OF IMPROVEMENTS**  
**LANCASTER LANDSCAPE MAINTENANCE DISTRICT NO. 1**

PROJECT NUMBER	LOCATION	DEVELOPER	1ST YEAR MAINTENANCE COST	DATE OF COUNCIL APPROVED	RESOLUTION NO. INITIATING PROCEEDINGS FOR ANNEXATION INTO LMD	RESOLUTION NO. DECLARING ITS INTENTION TO ANNEX TO TERRITORY	RESOLUTION NO. CONFIRMING THE DIAGRAM AND ASSESSMENT
Tract No. 061206	Southwest corner of Avenue J and 35th Street West	Western Pacific Housing	\$13,701.60	05/09/2006	06-99	06-100	06-103
		<b>TOTAL:</b>	\$13,701.60				

1337/37

37 37

SCALE: 1" = 200'

SHEET 2 OF 8 SHEETS

# TRACT NO. 061206

IN THE CITY OF LANCASTER, COUNTY OF LOS ANGELES,  
STATE OF CALIFORNIA

KEVIN R. HILLS, PLS 6617

169 LOTS

40.02 ACRES

## BOUNDARY DETAIL AND INDEX MAP

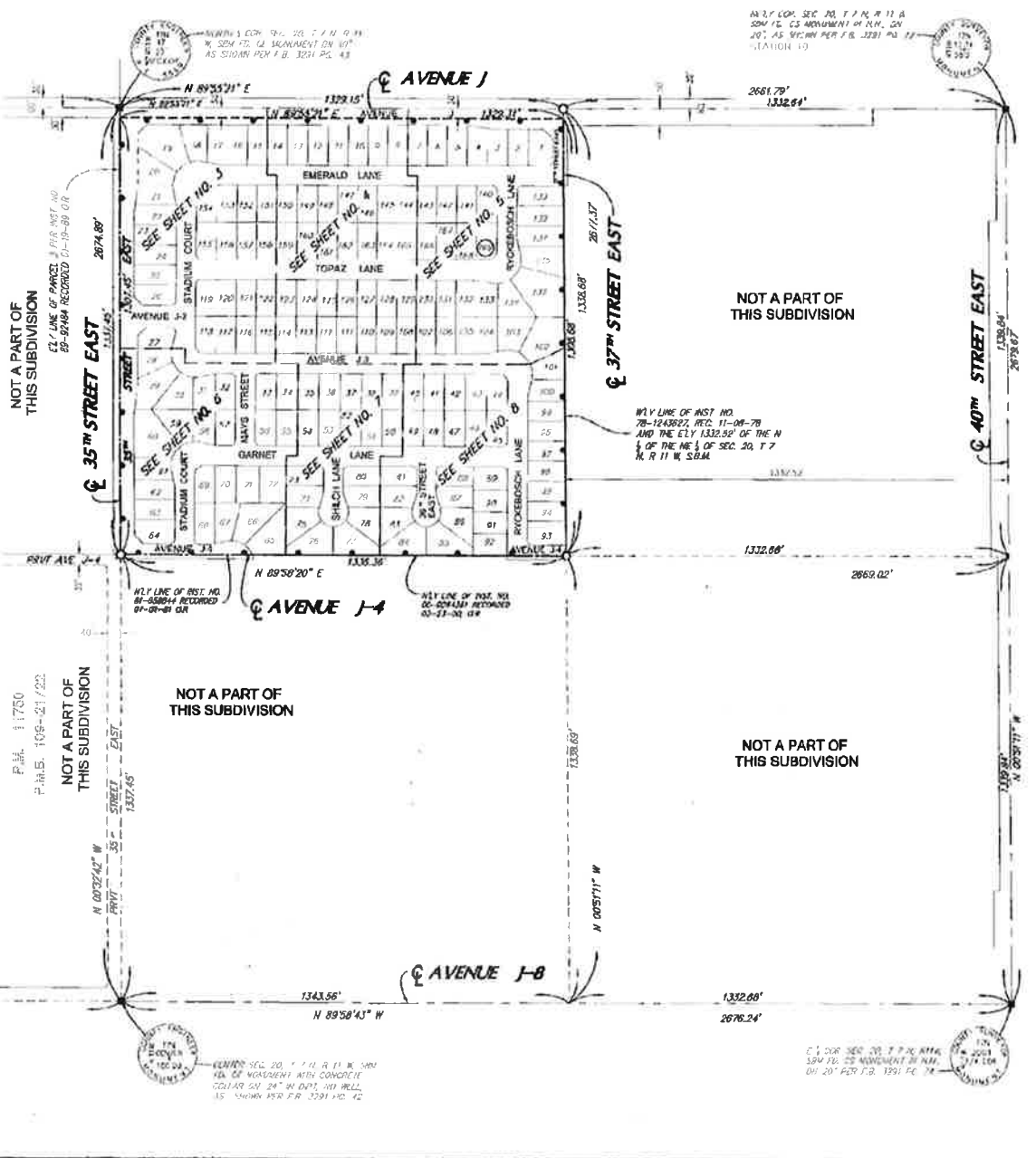
### LEGEND

- INDICATES FOUND MONUMENTS AS DESCRIBED.
  - 6" SPIKE AND WASHER, TAGGED "P.L.S. 0017", TO BE SET
  - THE BOUNDARY OF THE LAND BEING SUBDIVIDED BY THIS MAP
- NOTE:** SET LEAD AND TACK, TAGGED "P.L.S. 6617", ON TOP OF CURB FOR ALL LOT LINE PROLONGATIONS



### COORDINATE TABLE: COMBINED SCALE FACTOR = 0.99891281058

STATION	GRID NORTH [FEET]	GRID EAST [FEET]	GROUND NORTH [FEET]	GROUND EAST [FEET]
0010	2073488.6171	6543054.4431	2175417.2760	6743081.1921
0015	3358502.3533	8513493.2033	3368517.1119	8614314.0574
0020	3363333.5576	8512812.6329	3363316.8814	8512812.6329



NOT A PART OF THIS SUBDIVISION

NOT A PART OF THIS SUBDIVISION

NOT A PART OF THIS SUBDIVISION

NOT A PART OF THIS SUBDIVISION

NOT A PART OF THIS SUBDIVISION