

SCALE: 1"=50'

# PARCEL MAP NO. 69587

IN THE CITY OF LANCASTER, COUNTY OF LOS ANGELES,  
STATE OF CALIFORNIA

FOR CONDOMINIUM PURPOSES

ANTELOPE VALLEY ENGINEERING, INC.  
W.R. GORMAN L.S. 8767

SHEET 2 OF 3 SHEETS

3 PARCELS

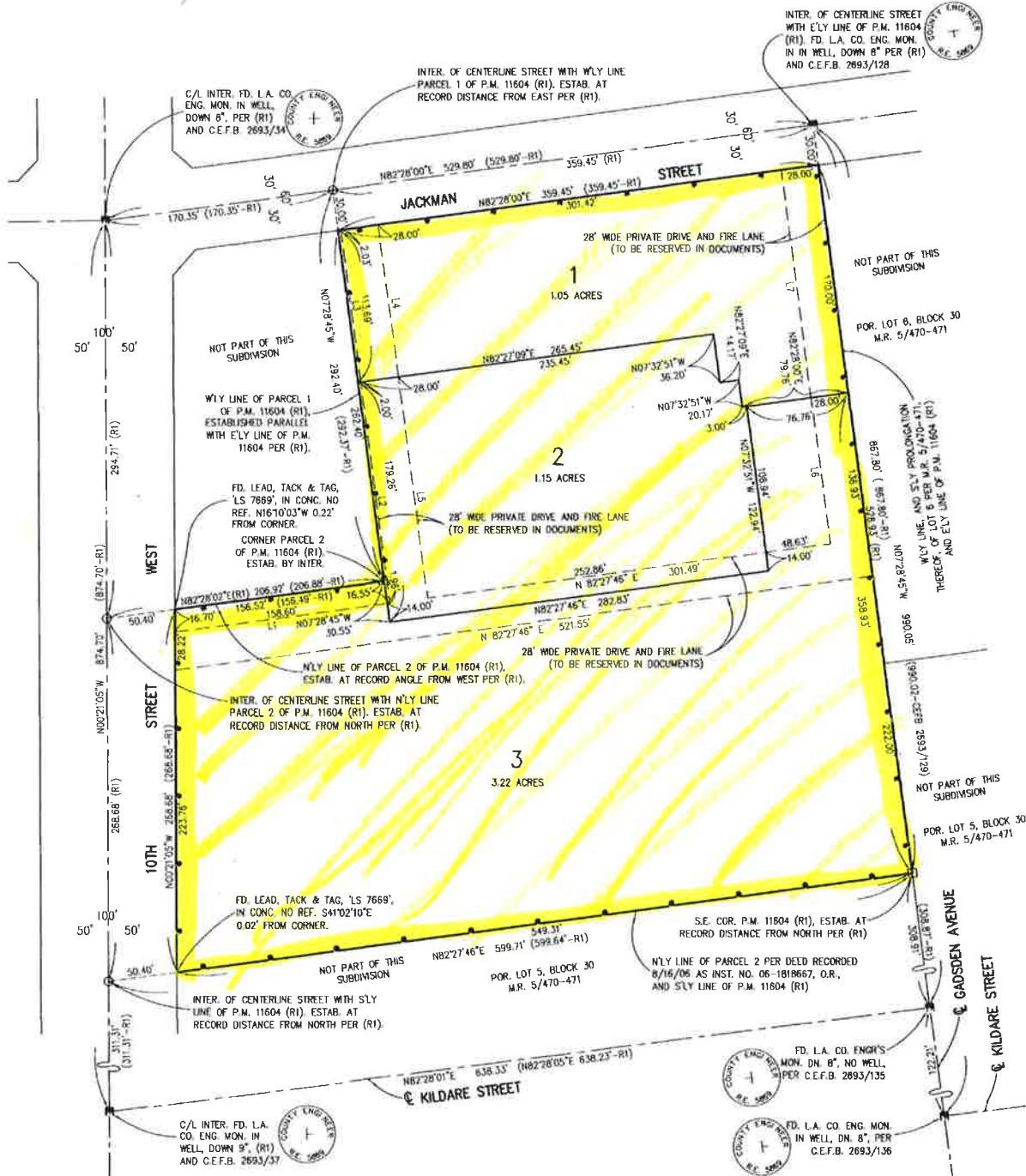
### LEGEND

- INDICATES FOUND MONUMENT AS DESCRIBED
- ⊙ INDICATES 6" SPIKE AND WASHER, TAGGED "L.S. 8767" TO BE SET FLUSH.
- △ INDICATES 2" IRON PIPE TAGGED "L.S. 8767" TO BE SET DOWN 6".
- INDICATES LEAD, TACK AND TAG "L.S. 8767" TO BE SET IN EXISTING CONCRETE CURB.
- (R1) INDICATES RECORD DATA PER P.M. 11604, P.M.B. 107/62

LINE	BEARING	LENGTH
L.1	N82°27'46"E	160.56'
L.2	N07°27'55"W	165.26'
L.3	N07°27'55"W	113.69'
L.4	N07°27'55"W	113.68'
L.5	N07°27'55"W	165.27'
L.6	N07°28'45"W	108.94'
L.7	N07°28'45"W	170.00'

5.42 ACRES

INDICATES THE BOUNDARY OF THE LAND BEING SUBDIVIDED BY THIS MAP.



(SEE SHEET 3 FOR EXISTING EASEMENT LOCATIONS)