

318/98

BOOK 1318 PAGE 98

SCALE 1" = 200'

TRACT NO. 060943

SHEET 2 OF 3 SHEETS

IN THE CITY OF LANCASTER
COUNTY OF LOS ANGELES, STATE OF CALIFORNIA

Phase 2

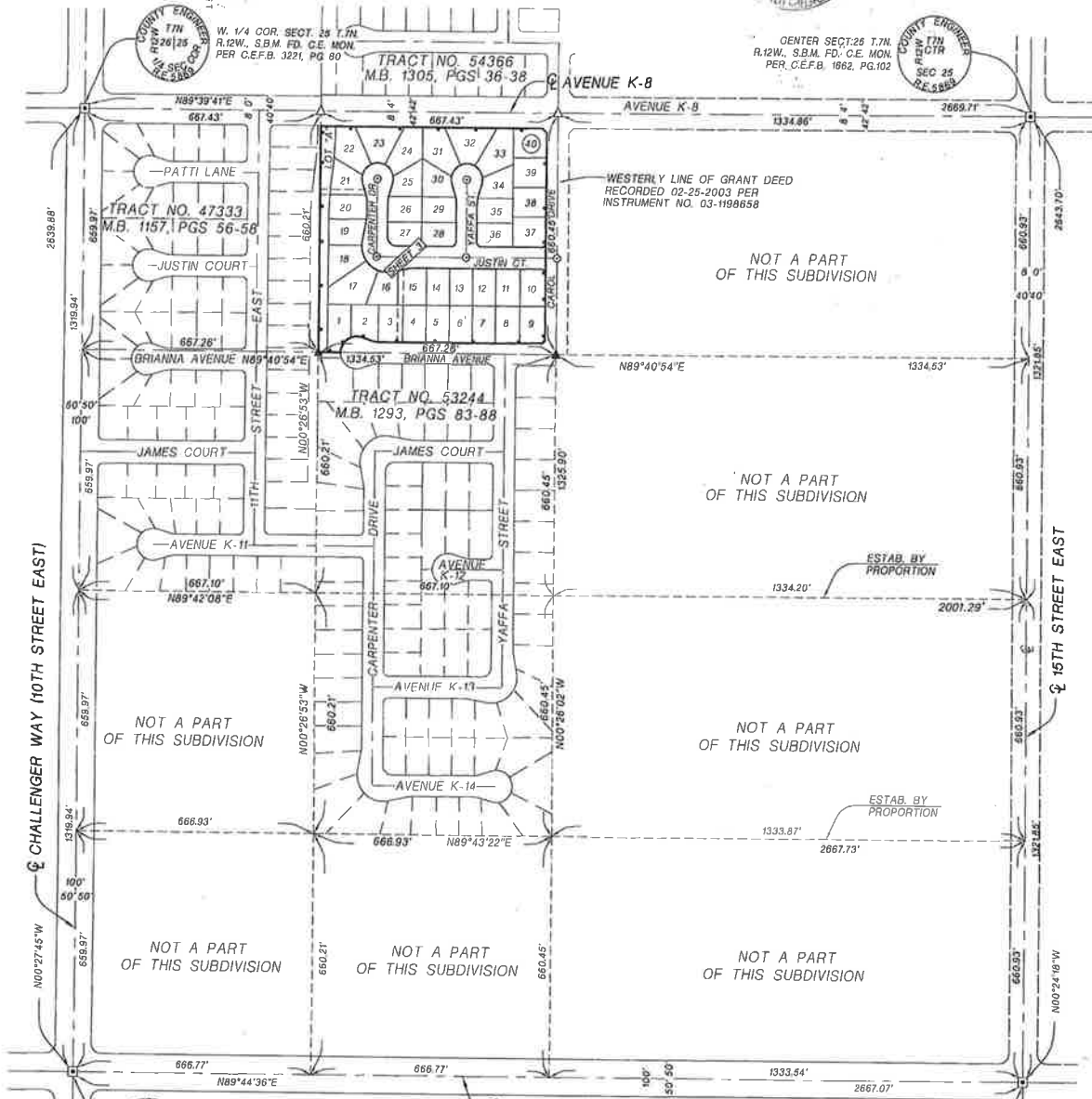
Lots 30-33 and 40

RANDALL A. GREENWOOD R.C.E. 29220

SURVEY DETAIL AND INDEX MAP

8.62 ACRES

40 LOTS



W. 1/4 COR. SECT. 25 T.7N.
 R.12W. S.B.M. FD. C.E. MON.
 PER C.E.F.B. 3221, PG. 80

CENTER SECT. 25 T.7N.
 R.12W. S.B.M. FD. C.E. MON.
 PER C.E.F.B. 1662, PG. 102

S.W. COR. SECT. 26 T.7N.
 R.12W. S.B.M. FD. C.S. MON.
 PER C.E.F.B. 1662, PG. 97

S 1/4 COR. SECT. 26 T.7N.
 R.12W. S.B.M. FD. C.S. MON.
 PER C.E.F.B. 1662, PG. 99

I HEREBY CERTIFY THAT SECURITY IN THE AMOUNT OF
 \$ 22,975.00 HAS BEEN FILED WITH THE
 CLERK OF THE BOARD OF SUPERVISORS OF THE COUNTY OF
 LOS ANGELES AS SECURITY FOR THE PAYMENT OF TAXES
 AND SPECIAL ASSESSMENTS COLLECTED AS TAXES ON THE
 LAND SHOWN ON MAP OF TRACT NO. / PARCEL MAP NO.
060943
 AS REQUIRED BY LAW.

EXECUTIVE OFFICER-CLERK OF THE BOARD
 OF SUPERVISORS OF THE COUNTY OF LOS
 ANGELES, STATE OF CALIFORNIA



LEGEND

- INDICATES THE BOUNDARY OF THE LAND BEING SUBDIVIDED BY THIS MAP
- FOUND MONUMENT AS DESCRIBED
- SW & T "TO BE SET" FLUSH, RCE 29220

- 2 3/8" O.D. IRON PIPE TO BE SET PER TRACT NO. 53244
- SPIKE AND WASHER TO BE SET FLUSH, RCE 29220 PER TRACT NO. 54366

PMT 15-00612

