

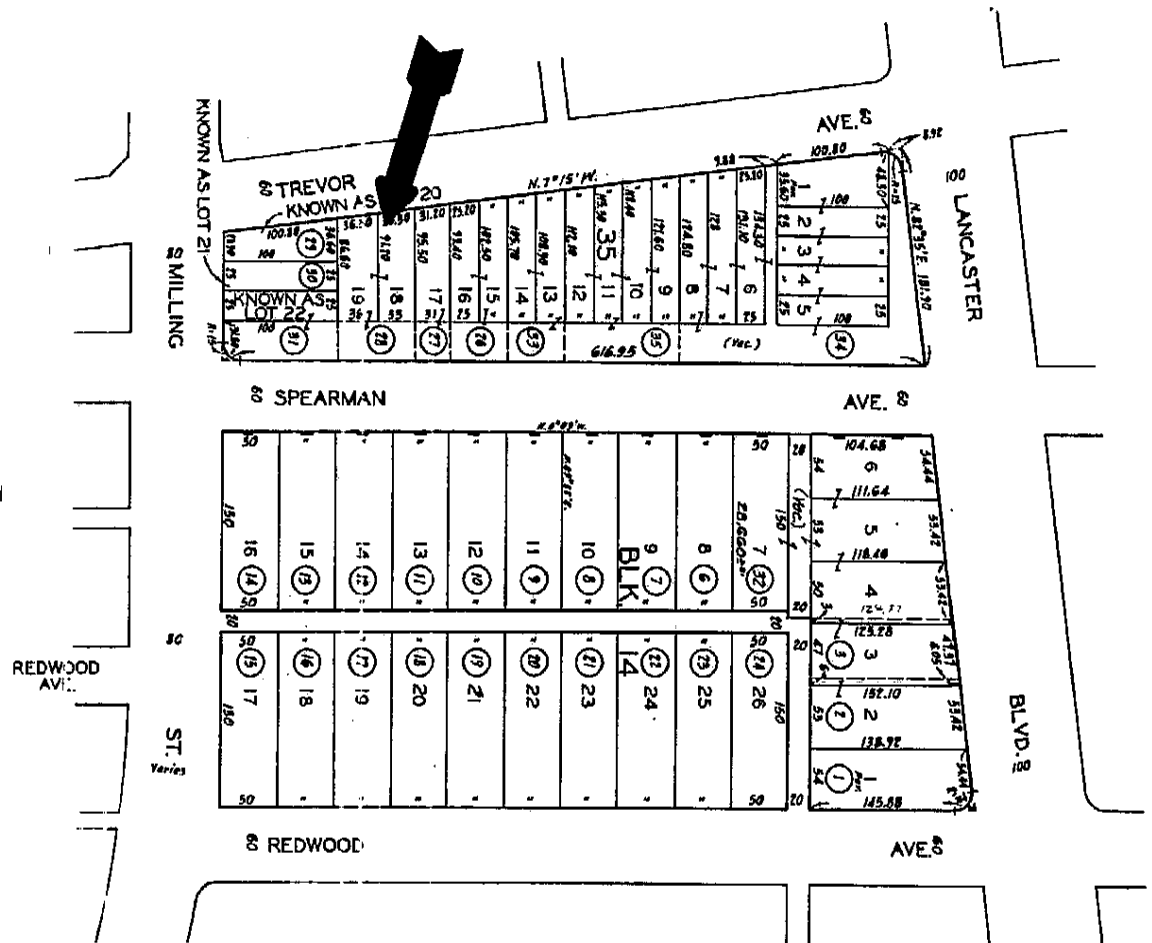
EXHIBIT "A"

Acquisition of Real Properties between the Lancaster Redevelopment Agency and various agencies as part of the Neighborhood Foreclosure Preservation Homeownership Program for properties located within the Lowtree, Trend and Piute areas.

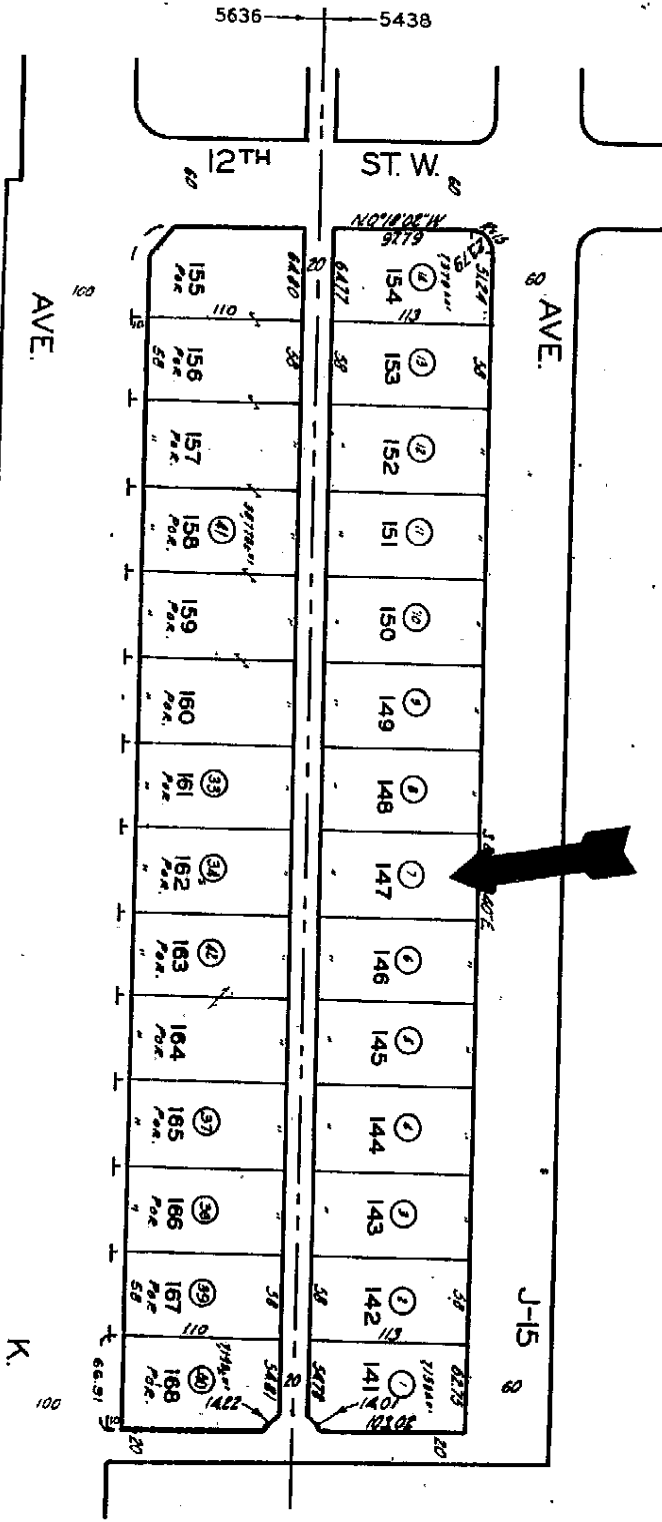
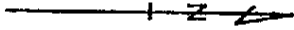
#	Property Address	Area	Sales Price	Property Owner	Real Estate Firm	Agent
1	44810 Trevor Avenue	Piute	\$ 264,000	Deutsche Bank National Trust Company, as Trustee for Long Beach Mortgage Loan Trust 2006-3	Keller Williams AV	Jason Chapman
2	1114 W. Avenue J-15	Lowtree	\$ 110,000	Bank of New York, as Trustee for the Certificate-Holders CWALT, Inc. Alternative Loan Trust 2006-OA19, Mortgage Pass-Through Certificates, Series 2006-OA19	Coldwell Banker Bozigian Realty	Charla Abbott
3	1120 W. Avenue H-5	Desert View II	\$ 95,000	LaSalle Bank National Association, as Trustee for the C-BASS Mortgage Loan Asset-Backed Certificates, Series 2006-CB7	HomeBased Realty	Jim Luongo
4	1408 Boyden Ave.	Desert View II	\$ 90,000	Deutsche Bank National Trust Company, as trustee for the Morgan Stanley ABS Capital I Inc. Trust 2	Coldwell Banker Hartwig Realty	Dennis Greer
5	45740 Kingtree	Desert View II	\$ 80,000	The Bank of New York, CWABS Asset Backed Notes Trust 2007-SD1	Assist 2 Sell	Mariness Chata
6	45449 Leatherwood	Desert View II	\$ 82,000	LaSalle Bank National Association	Troth Realtors	Don Anderson
7	1252 W. Avenue H-15	Desert View II	\$ 81,000	JP Morgan Chase Bank NA Bear Stearns Mortgage Pass Through Certificates	Troth Realtors	Michelle Bragg
8	1219 W. Avenue H-11	Desert View II	\$ 90,000	US Bank National Association, C Bass Mortgage Loan Asset Backed Certificates	Coldwell Bank Hartwig Realty	Todd Patterson
9	1109 W. Avenue H-5	Desert View II	\$ 95,000	Deutsche Bank National Trust Company, Securitized Asset Backed Receivables LLC	Real Estate Investors Connection	Randy Walker
10	45436 12th Street West	Desert View II	\$ 105,000	Deutsche Bank National Trust Company, First Franklin Mortgage loan Trust 2006	HomeBased Realty	Marvin McKinnon
11	45421 Gadsden Ave.	Mariposa	\$ 90,000	Bank of New York as Trustee for the Certificates Holders CWALT, Inc.	Keller Williams AV	Griffin Weaver
12	45447 Gadsden Ave.	Mariposa	\$ 90,000	HSBC Bank	Re/Max All Pro	Sue Koett
13	809 W. Avenue H-8	Mariposa	\$ 95,000	Wells Fargo Bank, N.A. as Trustee for the Holders of Harborview 2006-12	Keller Williams AV	Griffin Weater

Acquisition of Real Properties between the Lancaster Redevelopment Agency and various agencies as part of the Neighborhood Foreclosure Preservation Homeownership Program for properties located within the Lowtree, Trend and Piute areas.

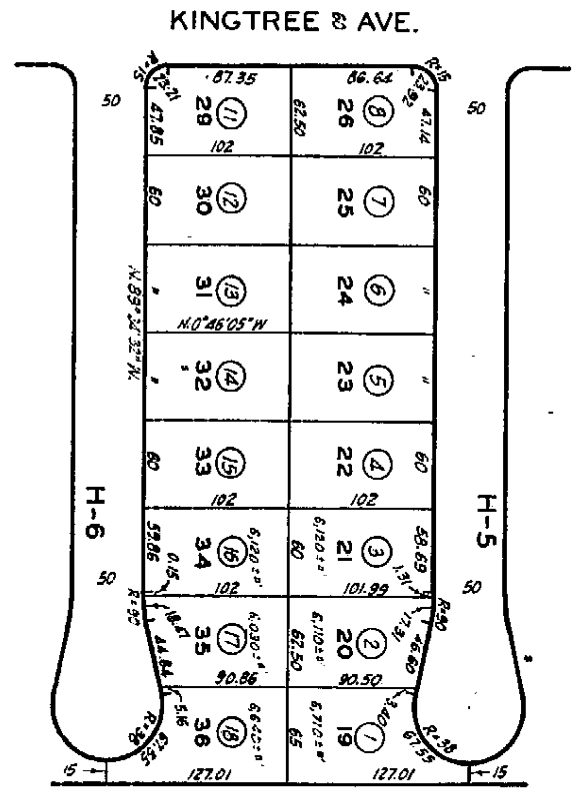
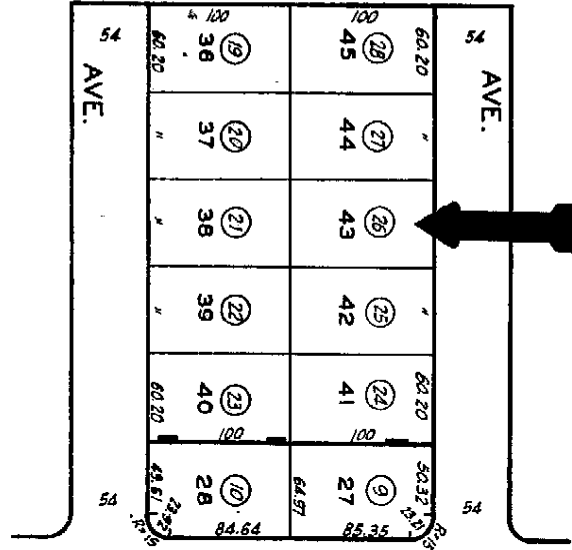
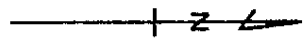
#	Property Address	Area	Sales Price	Property Owner	Real Estate Firm	Agent
14	822 W. Avenue H-14	Mariposa	\$ 79,900	HSBC Bank USA, National Association, as Turstee for the Holders of Deutsche ALT-A Securities Mortgage Loan Trust, Series 2007-OA1	Coldwell Banker Hartwig Realty	Rebecca Drury
15	45532 Fig Ave.	Mariposa	\$ 100,000	Deutsche Bank National Trust Company, as Trustee for the Registered Holders of New Century Home Equity Loan Trust, Series 2005-B Asset Backed Pass-Through Certificates	Century 21 Yarrow	Ernie Lugo
16	805 Jason Court	Mariposa	\$ 100,000	LaSalle Bank National Association, as Trustee for Certificate Holders of Bear Stearns Asset Backed Securities, 1 LLC, Asset Backed Certificates, Series HE11	Coldwell Banker Hartwig Realty	Chip Murphy
17	45303 6th Street East	Piute 2	\$ 105,000	Wells Fargo Bank, National Association on Behalf of the Certificate Holders Morgan Stanley ABS Capital 1 Inc. Trust 2005-HE4 Mortgage Pass-Through Certificates, Series 2005-HE4	Realty Executive	Jared Erfle



PLAT NO. 11-11-11-11



3

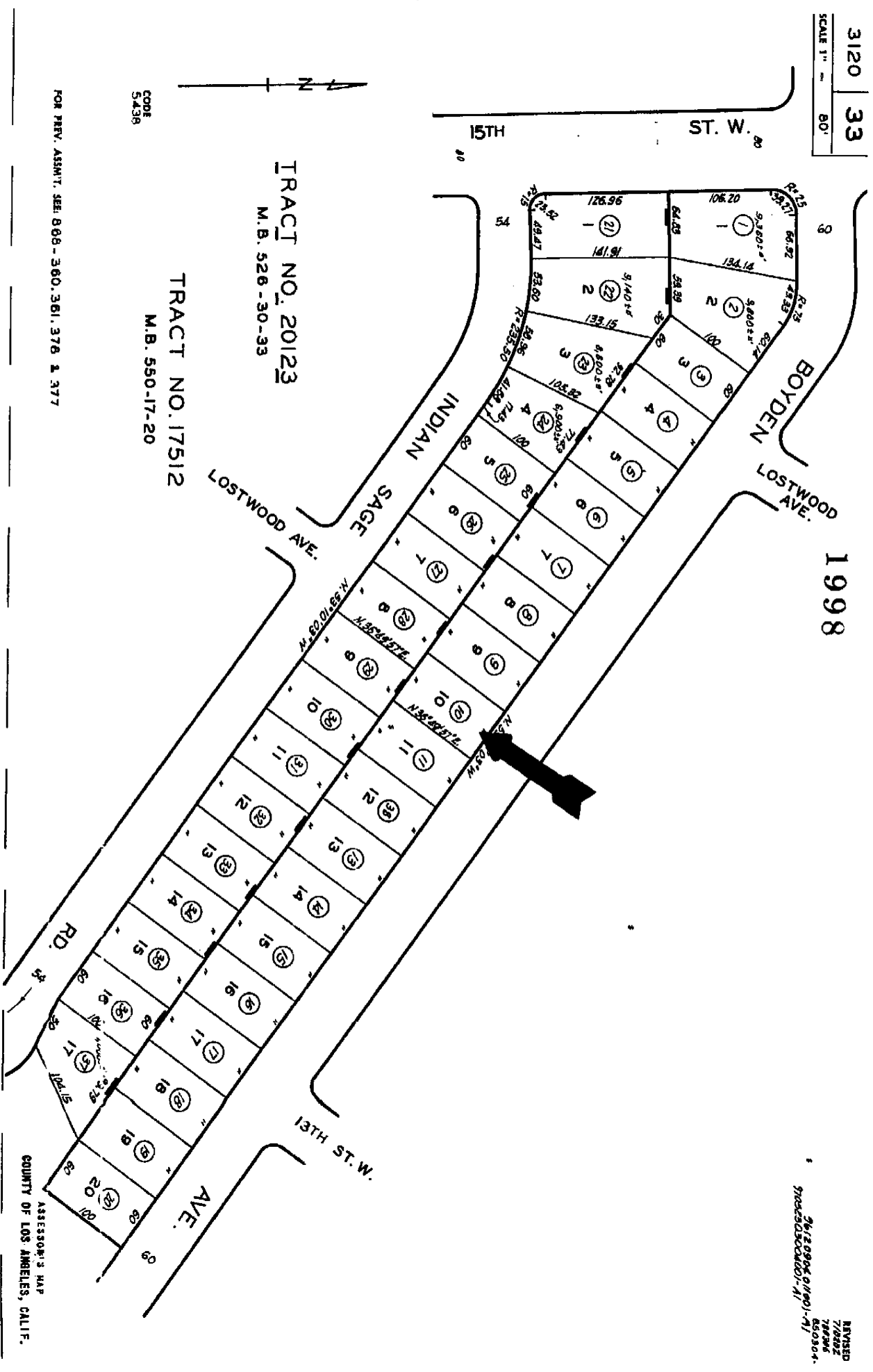


10TH ST. W.

County of Los Angeles: Rick Auerbach, Assessor

1998

REVISED
7/2004
7/2004
650304-
36120904 01/001-1/1
360630000001-1/1



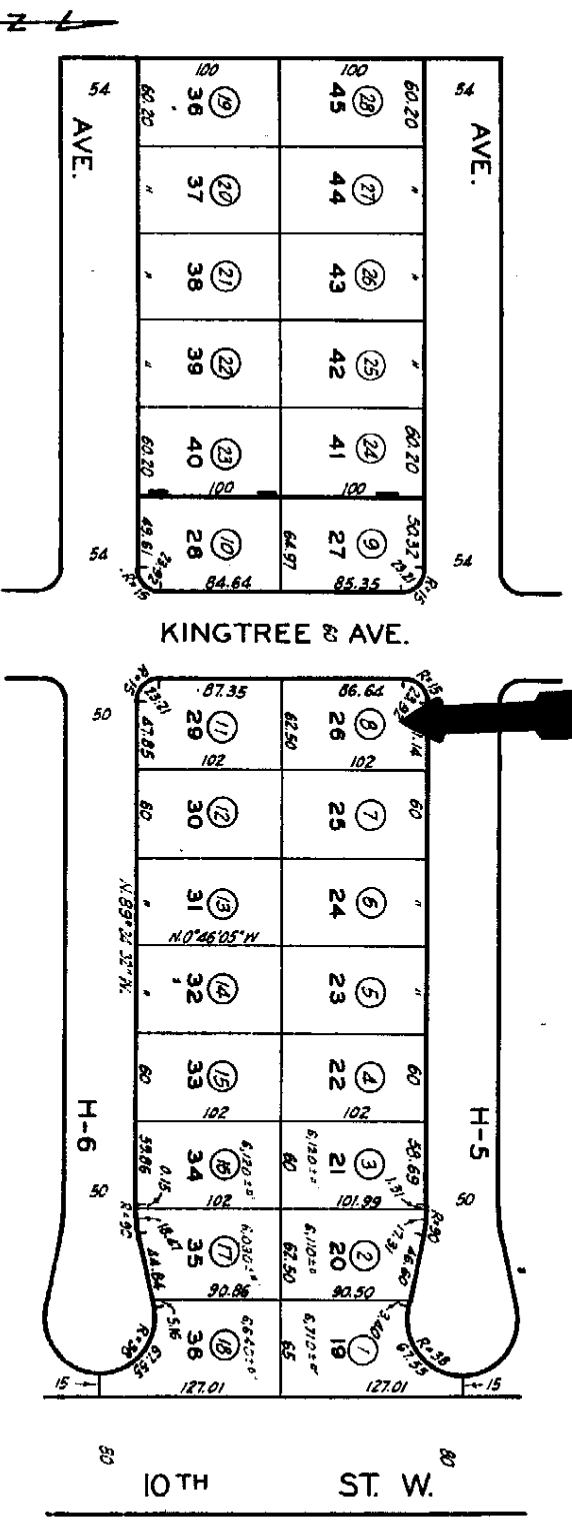
FOR PREV. ASSM'T, SEE: 808-360, 361, 376, & 377

3120 5
SCALE 1" = 80'

1985

County of Los Angeles, Rick Auerbach, Assessor

Revised
6/30/87
6/31/85
7/10/82
8/20/80
8/20/84-85



TRACT NO. 23155
M. B. 605-70-71

TRACT NO. 22769
M. B. 597-88-89

CODE
5438

FOR PREV. ASSMT. SEE: 688-399 & 402

ASSESSOR'S MAP
COUNTY OF LOS ANGELES, CALIF.

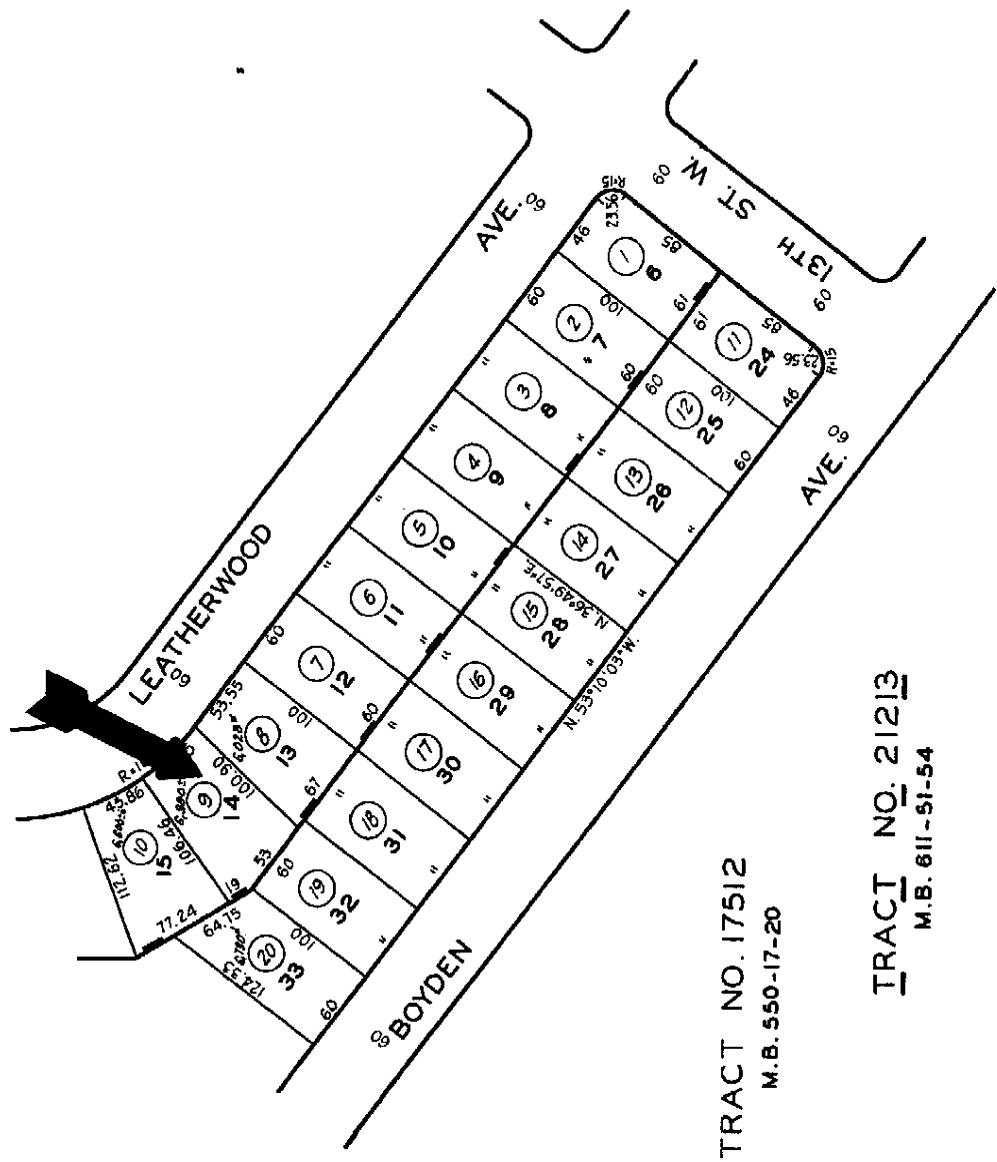
5

3120 | 23
1/4" = 80'

1985

County of Los Angeles: Rick Auerbach, Assessor

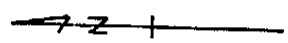
REVISED
2-26-68
7/22/82
7/2/86
050304-1



6

TRACT NO. 17512
M.B. 550-17-20

TRACT NO. 21213
M.B. 611-51-54



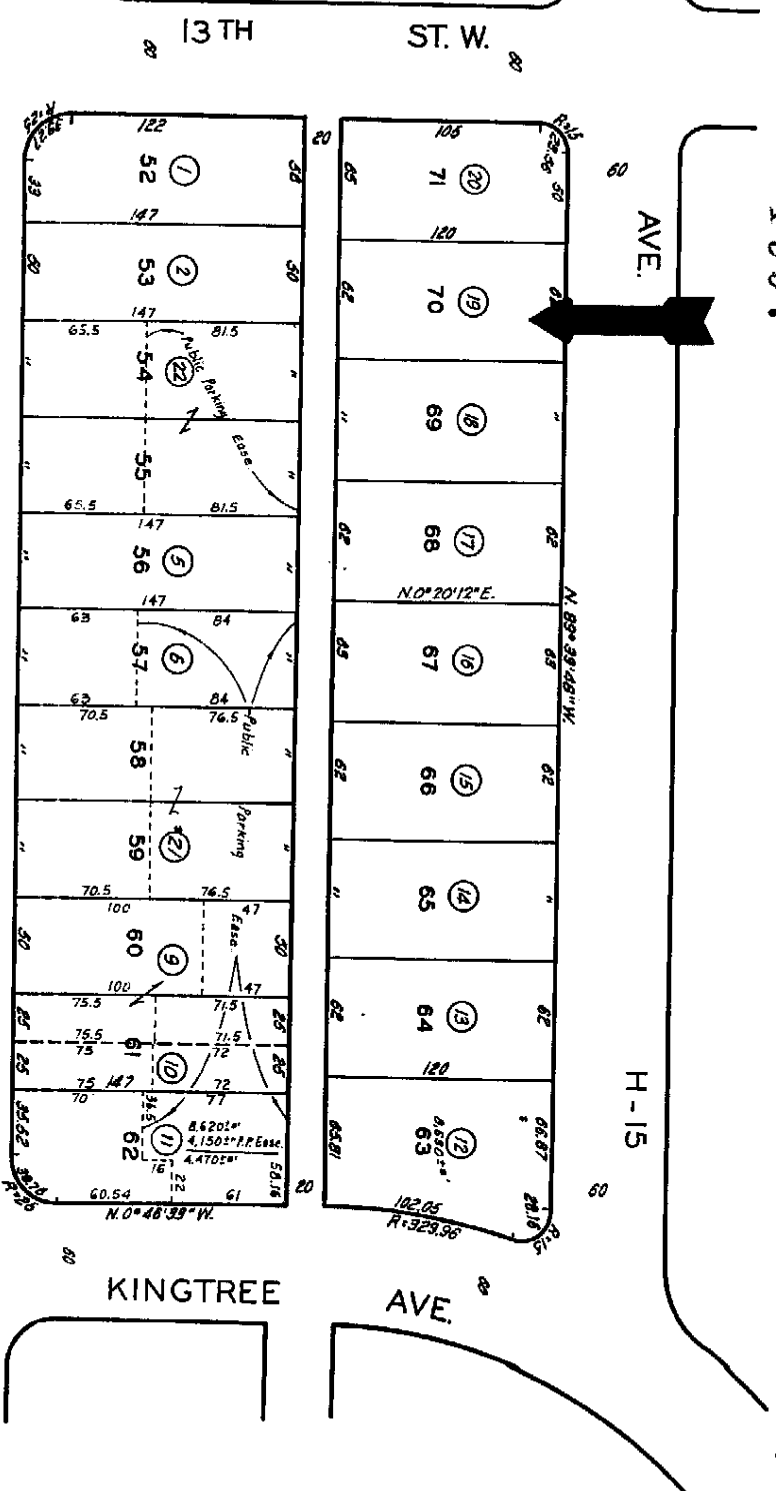
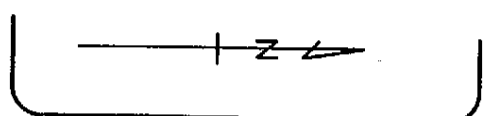
CODE
5438

FOR PREV. ASSNT. SEE 868-376, 377, 408, 409 & 410

ASSESSOR'S MAP
COUNTY OF LOS ANGELES, CALIF.

1997

Revised:
591223
5710202
7603804
9503804-85
750706



CODE
5438

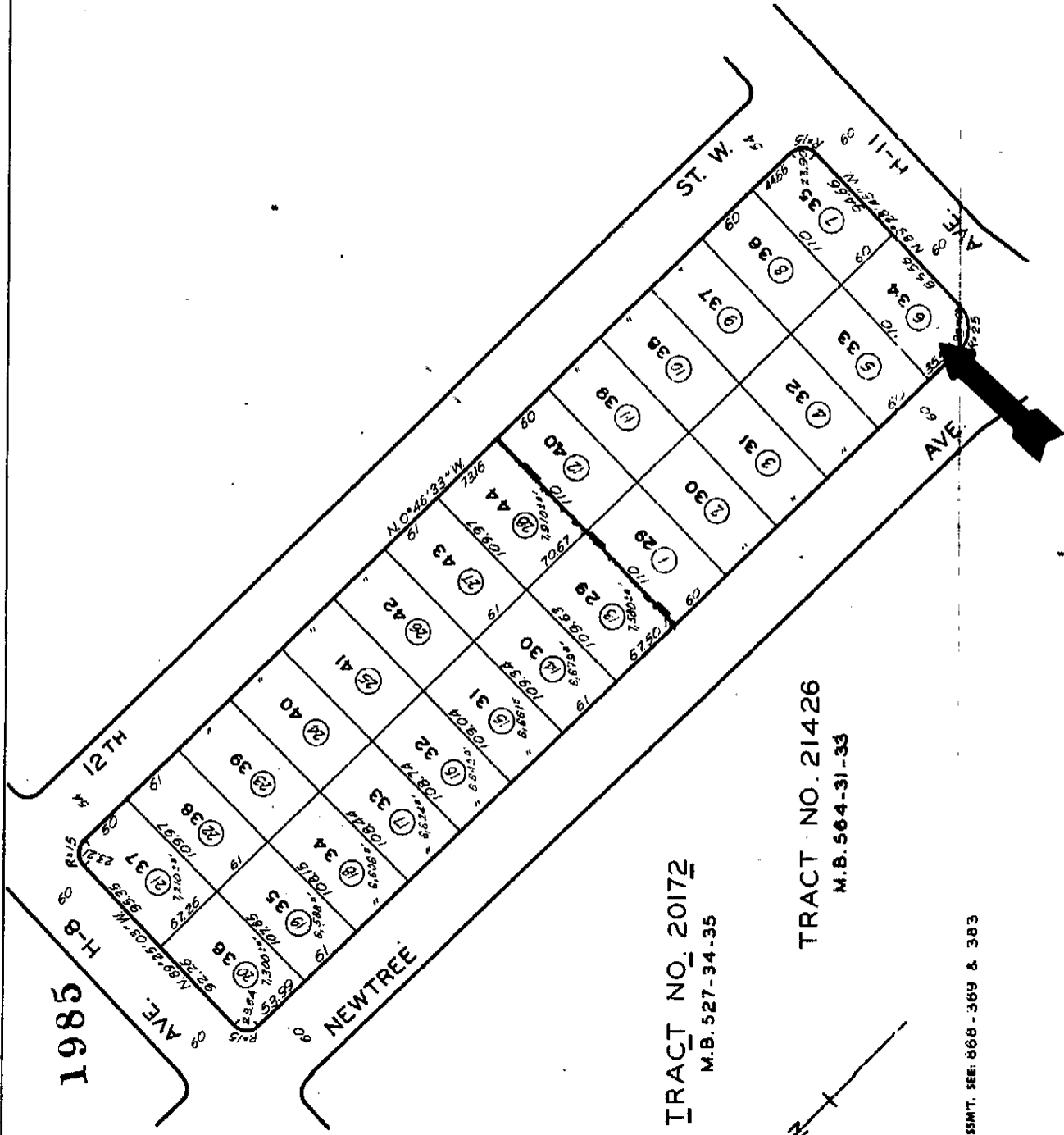
FOR PREP. ACQUISITION, SEE CGS - 335

TRACT NO. 15489

M. B. 463-28-33

REVISED
2-26-62
2-17-63
7/10/67
7/19/68
85030-4

3120 15
SCALE 1" = 60'



TRACT NO. 20172
M.B. 527-34-35

TRACT NO. 21426
M.B. 564-31-33

COPY
5436

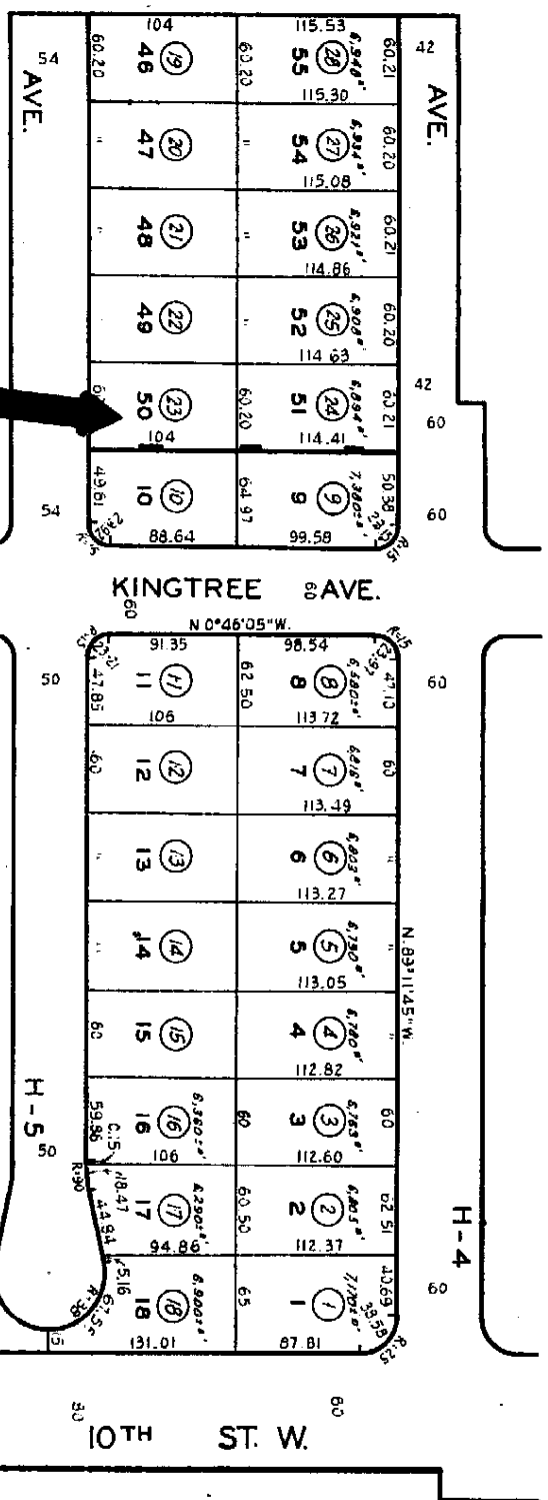
FOR PREV. ASSMT. SEE 666-369 & 383

ASSESSOR'S MAP
COUNTY OF LOS ANGELES, CALIF.

89

1985

Revised
 930725
 700250
 700505
 650504-85



TRACT NO. 23155
 M.B. 605-70-71

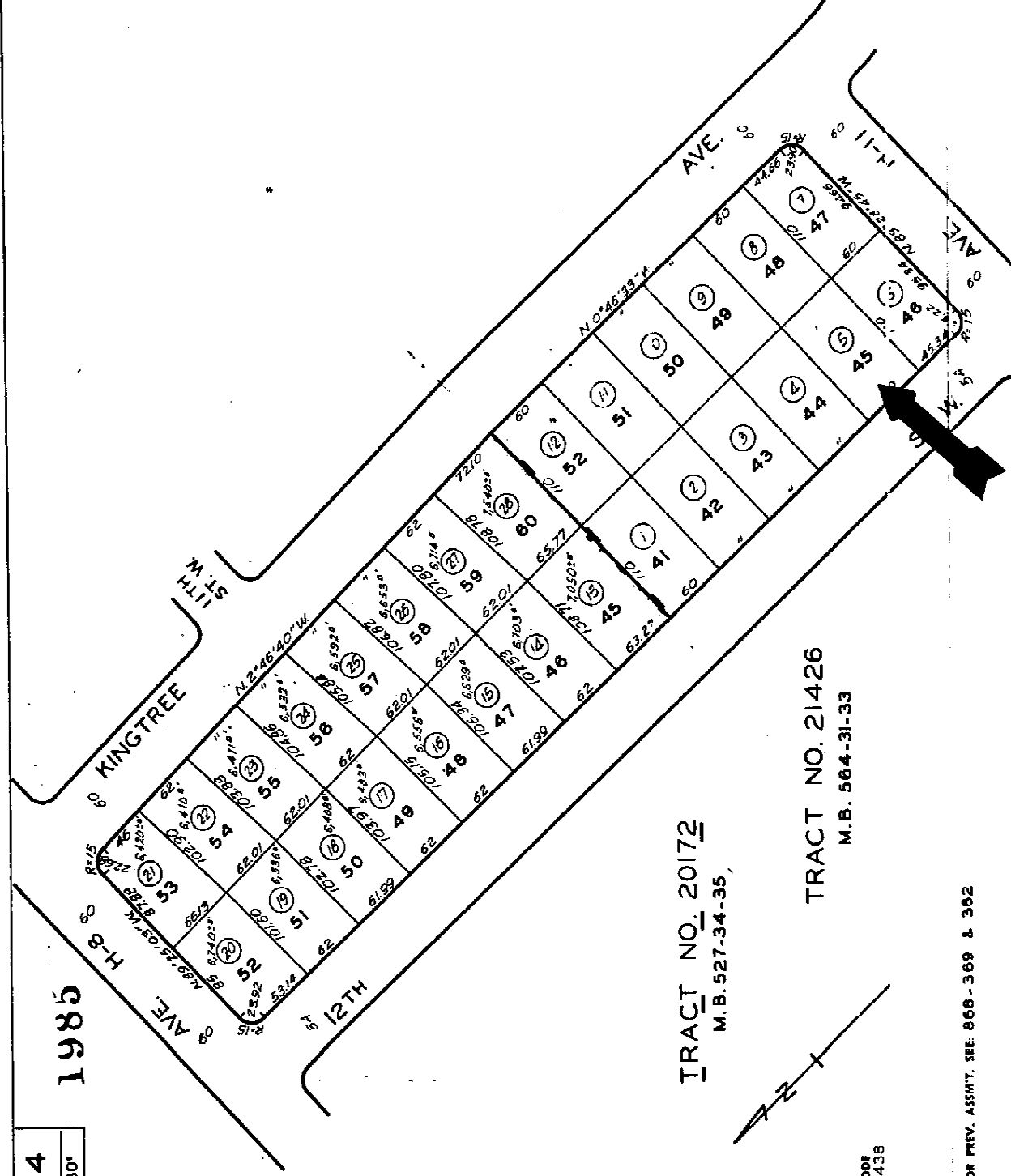
TRACT NO. 22769
 M.B. 597-88-89

CODE
 5438

FOR PREV. ASSM'T. SEE: 668-399 & 402

3120 14
SCALE 1" = 80'

1985



TRACT NO. 20172
M.B. 527-34-35

TRACT NO. 21426
M.B. 564-31-33

CODE
5438

FOR PREV. ASSMT. SEE 868-369 & 362

ASSESSOR'S MAP
COUNTY OF LOS ANGELES, CALIF.

REVISED
2-26-62
2-27-63
7/10/83
1/18/85
850304-85

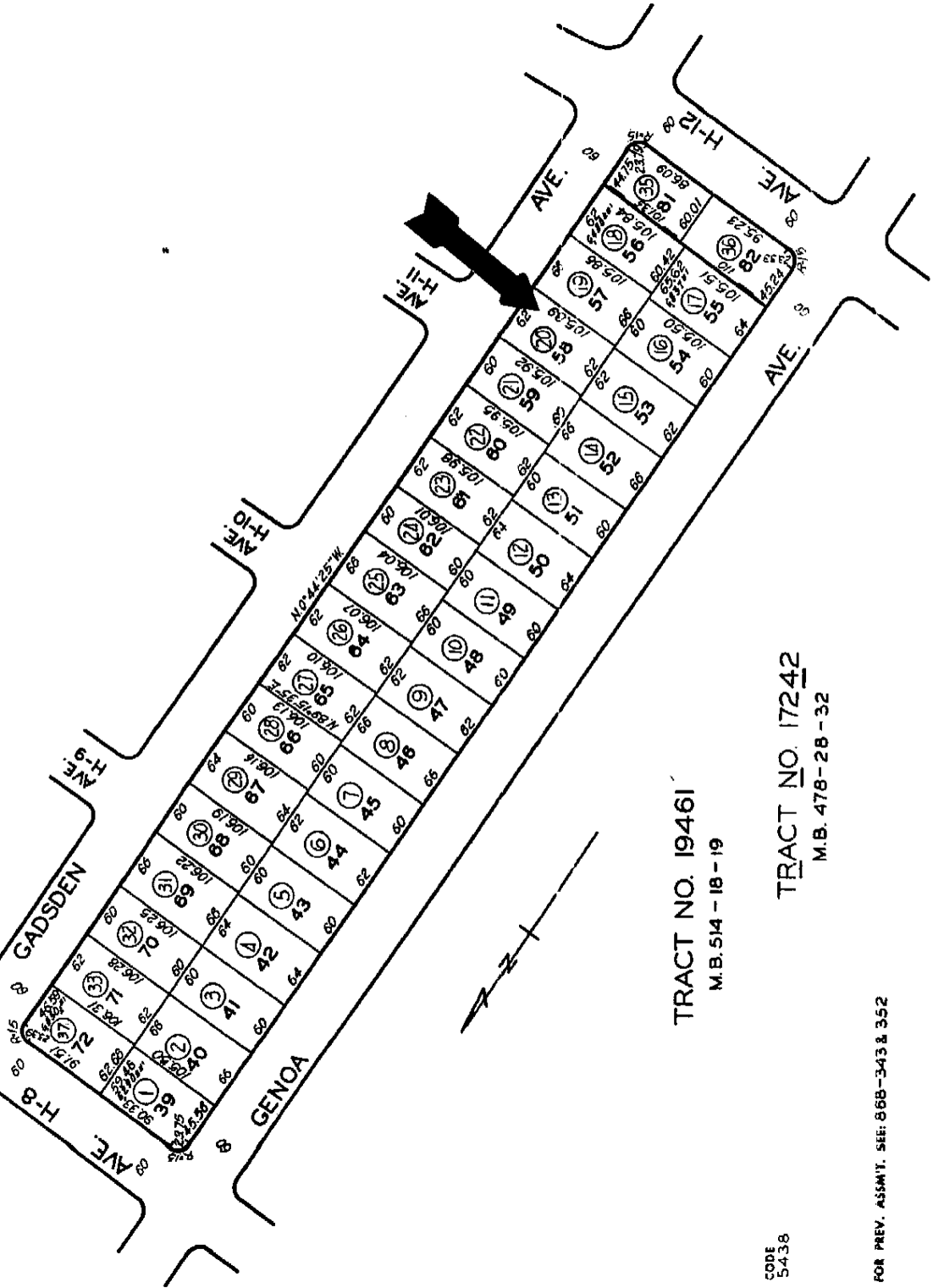
10

3135 15

SCALE 1" = 100'

1996

REVISED
620412
660305
710224
830309-8
M11582200000001-A1
30581500000001-A1



TRACT NO. 19461
M.B. 514 - 18 - 19

TRACT NO. 17242
M.B. 478 - 28 - 32

CODE
54.38

FOR PREV. ASSM'T. SEE: 868-343 & 352

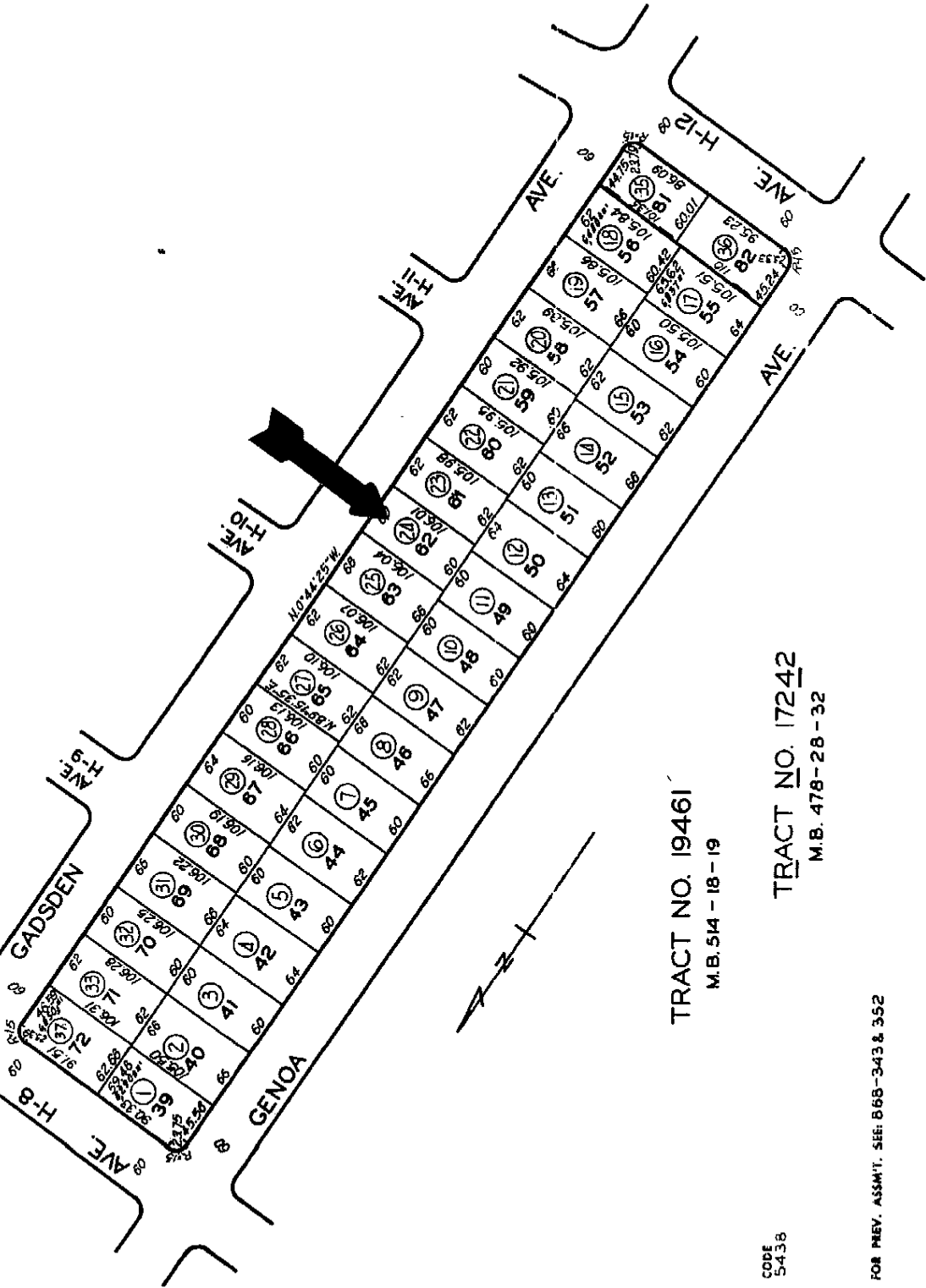
ASSESSOR'S MAP
COUNTY OF LOS ANGELES, CALIF.

3135 15
SCALE 1" = 100'

1996

REVISED
620-412
660-305
710-254
600-009
600-009-01
411/52000/001/01
55091020001-01

12



TRACT NO. 19461
M.B. 514 - 18 - 19

CODE
5438

TRACT NO. 17242
M.B. 478 - 28 - 32

FOR PREV. ASSM'T. SEE: 568-343 & 352

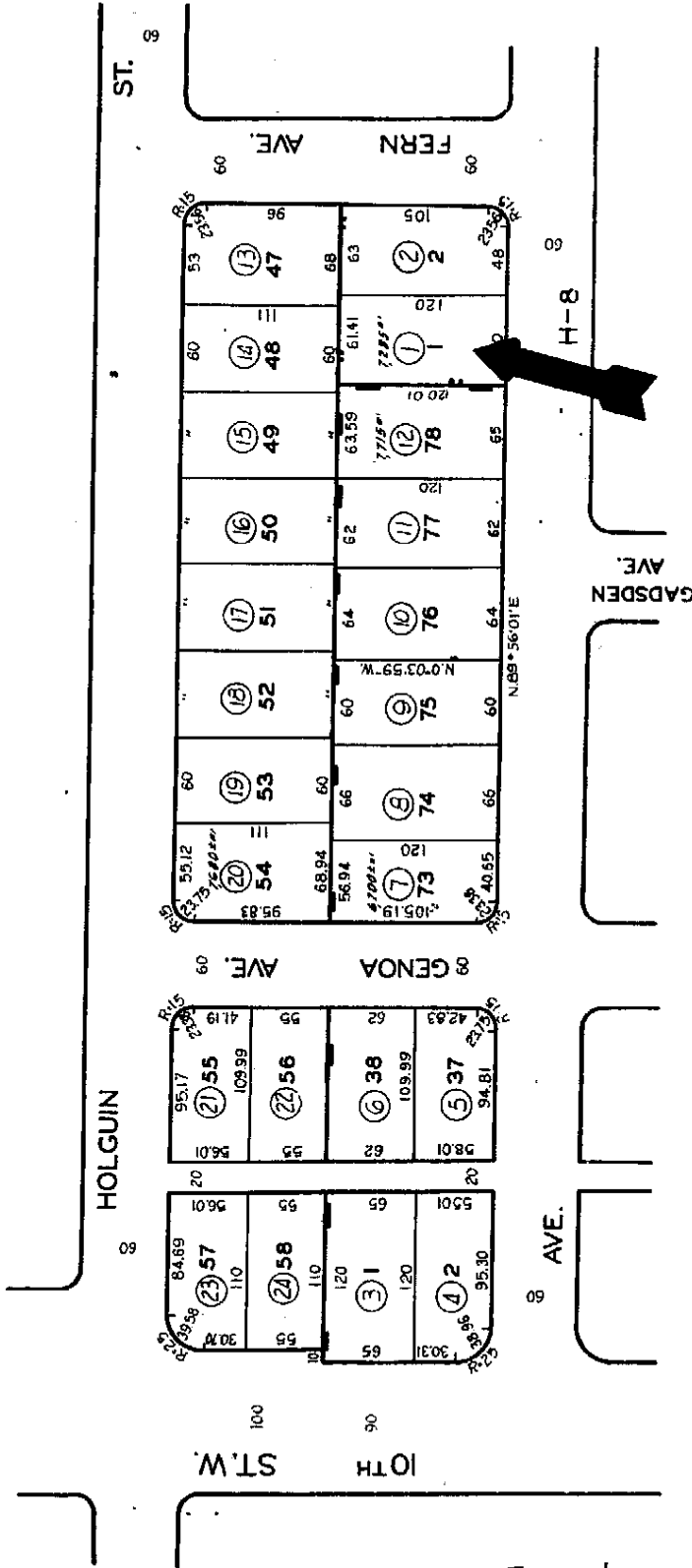
3135

3

SCALE 1" = 50'

1985

REVISED
6-0-10
6-0-12
6-0-14
6-0-16
6-0-18
6-0-20
6-0-22
6-0-24
6-0-26
6-0-28
6-0-30
6-0-32
6-0-34
6-0-36
6-0-38
6-0-40
6-0-42
6-0-44
6-0-46
6-0-48
6-0-50
6-0-52
6-0-54
6-0-56
6-0-58
6-0-60
6-0-62
6-0-64
6-0-66
6-0-68
6-0-70
6-0-72
6-0-74
6-0-76
6-0-78
6-0-80
6-0-82
6-0-84
6-0-86
6-0-88
6-0-90
6-0-92
6-0-94
6-0-96
6-0-98
6-0-100



TRACT NO. 21112
M.B. 594-53-54

TRACT NO. 19461
M.B. 514-18-19

TRACT NO. 20602
M.B. 563-20-22

CODE
5-438

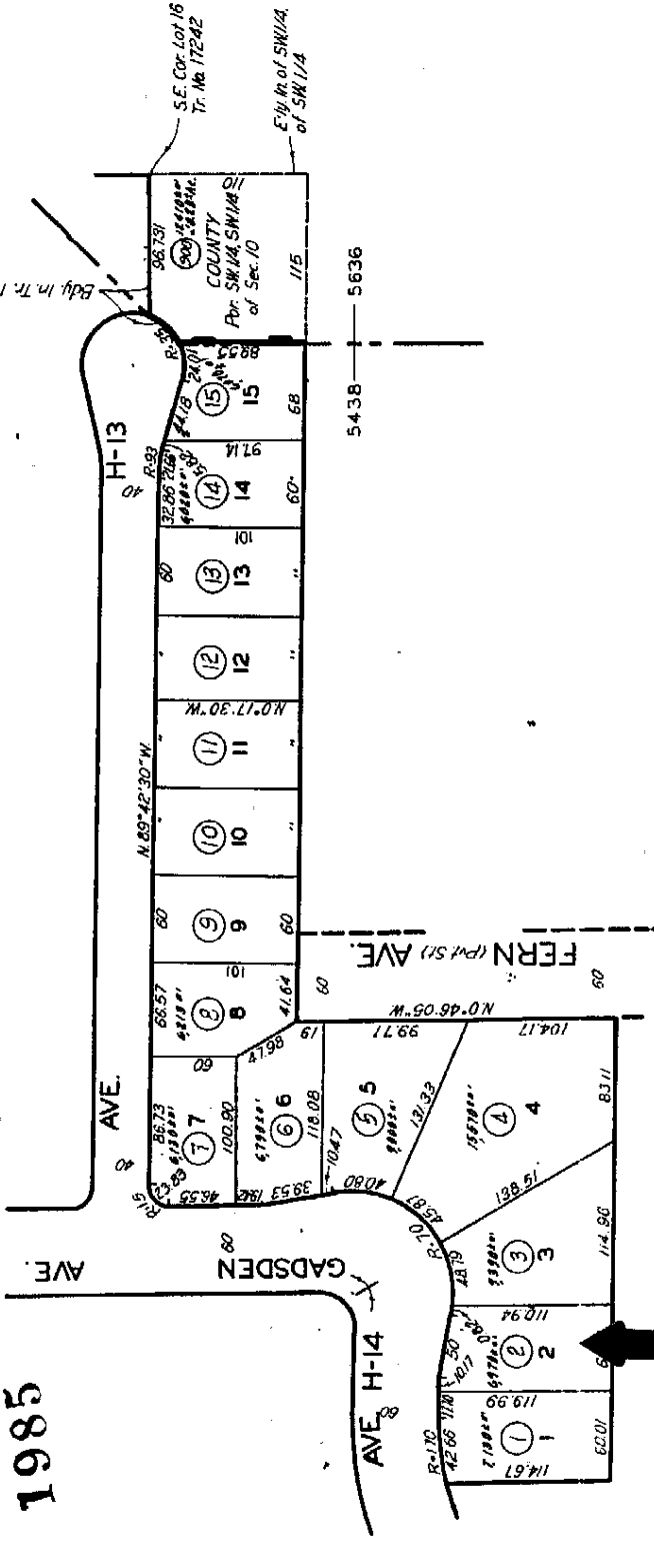
FOR PREV. ASSM'T. SEE: D68-353, 379 & 393

ASSESSOR'S MAP
COUNTY OF LOS ANGELES, CALIF.

REVISED
660305
660306
710224
760306
860305-85

14

3135 20
ALE 1" 80'



TRACT NO. 17242 T.7 N., R.12 W.
M.B. 478-28 - 32

CODE
5438
5636

FOR PREV. ASSM L. SEE 068-328 & 340

ASSESSOR'S MAP
COUNTY OF LOS ANGELES, CALIF.

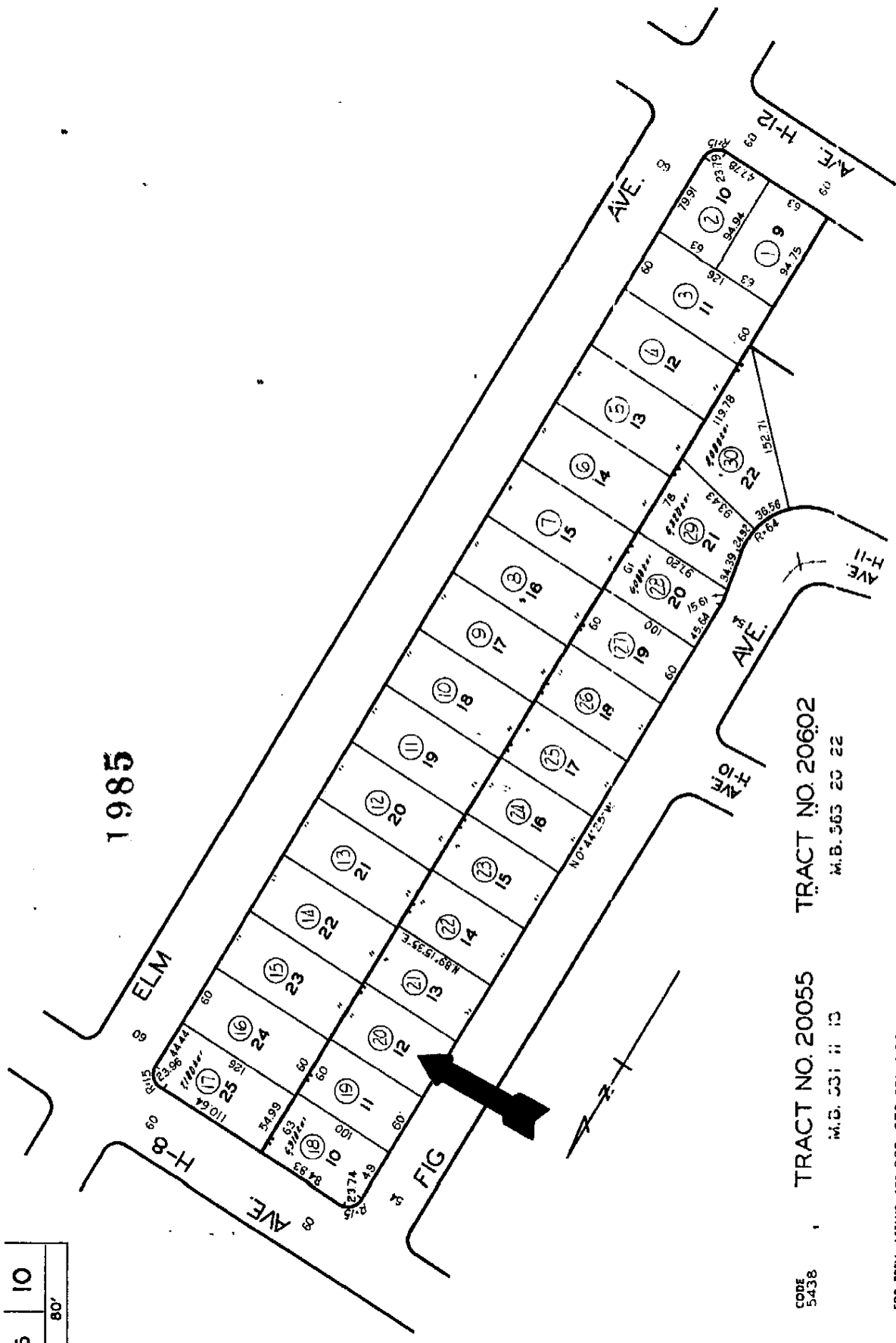
3135 | 10
1/8" = 80'

County of Los Angeles: Rick Auerbach, Assessor

REVISED
7/12/24
780306
850305

1985

15



CODE 5438 TRACT NO. 20055 TRACT NO. 20602
M.B. 531 II 13 M.B. 563 20 22

FOR PREV. ASSMT. SEE: 868-373, 379 & 380

ASSESSOR'S MAP
COUNTY OF LOS ANGELES, CALIF.

3135 30

SCALE 1" = 100'
P.A. 3135-1

TRA 2279
5726

OFFICE OF ASSESSOR
COUNTY OF LOS ANGELES
CORP. RIGHT © 1992

REVISED
500910700/003-AI
591720

Map Information

Map Information

Map Information

Map Information

Map Information

Map Information

2003

5726

HISTORICAL

PG 32

PENNYROYAL ST

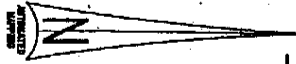
5438

PG 1

SAVE

H-4 s

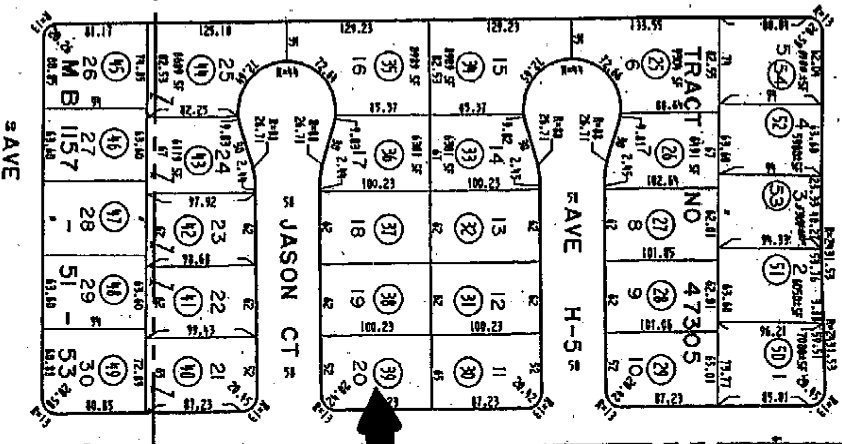
ST W



BK 3120

2279 5726

10TH



GENOA AVE

TRACT NO

23026

3.3 AC
SCHEM 900
11.71 AC

MB

630

43

H-6 s

FIG

AVE

32	13	31	11	30	10	29	9	28	8	27	7	26	6	25	5	24	4	22	2	44	13	21	1
----	----	----	----	----	----	----	---	----	---	----	---	----	---	----	---	----	---	----	---	----	----	----	---

PG 1

16

2279 5438

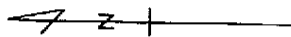
PG 29

PG 28

17

1985

3176 16
SCALE 1" = 100'



CODE
5867

FOR PREV. ASSM'T SEE:
3143 - 37 & 38

TRACT NO. 22806

612-53-61

ASSESSOR'S MAP
COUNTY OF LOS ANGELES, CALIF.

