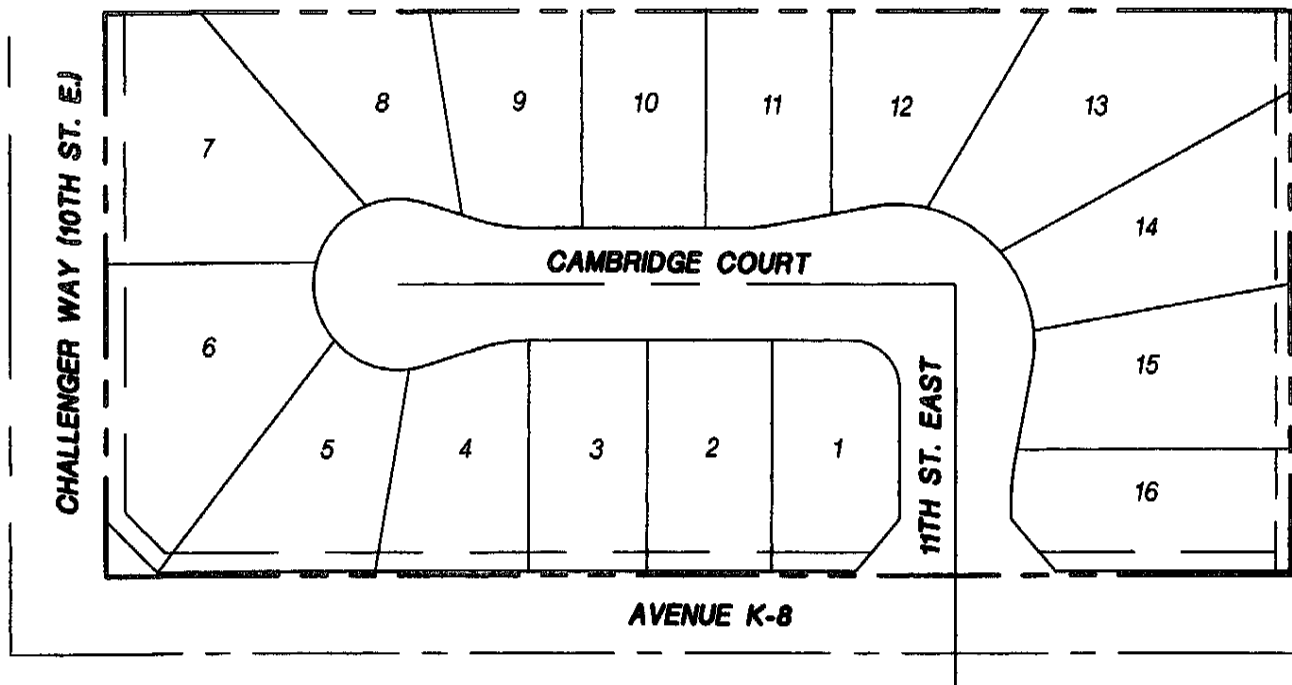


**EXHIBIT A**  
**ACCEPTANCE OF IMPROVEMENTS**  
**LANCASTER LANDSCAPE MAINTENANCE DISTRICT NO. 1**  
**24-Jun-08**

PROJECT NUMBER	LOCATION	DEVELOPER	1ST YEAR MAINTENANCE COST	DATE OF COUNCIL APPROVED	RESOLUTION NO. INITIATING PROCEEDINGS FOR ANNEXATION INTO LMD	RESOLUTION NO. DECLARING ITS INTENTION TO ANNEX TO TERRITORY	RESOLUTION NO. CONFIRMING THE DIAGRAM AND ASSESSMENT
TR 061278	Northeast corner of Ave K-8 and Challenger Way	Richmond American Homes of CA, Inc.	\$ 1,328.64	01/10/2006	06-07	06-08	06-13
TR 53297	Southwest corner of Ave K and 20th St E.	K. Hovnanian Forecast Homes, Inc.	\$ 14,960.00	05/11/2004	04-259	04-260	04-265
<b>Total:</b>			\$ 16,288.64				

TRACT NO. 061278



SCALE: 1"=100'

*PREPARED BY:*



**PACIFIC COAST CIVIL, INC.**

30141 Agoura Road, Suite 200

Agoura Hills, CA 91301

PH: (818) 865-4166

FAX: (818) 865-4196

*PREPARED FOR:*

**RICHMOND AMERICAN HOMES  
OF CALIFORNIA, INC.**

8510 BALBOA BLVD., SUITE #150

NORTHRIDGE, CA 91325

PH: (818) 895-4400

FAX: (818) 895-4504

# VESTING TRACT NO. 53297

IN THE CITY OF LANCASTER, COUNTY OF LOS ANGELES,  
STATE OF CALIFORNIA

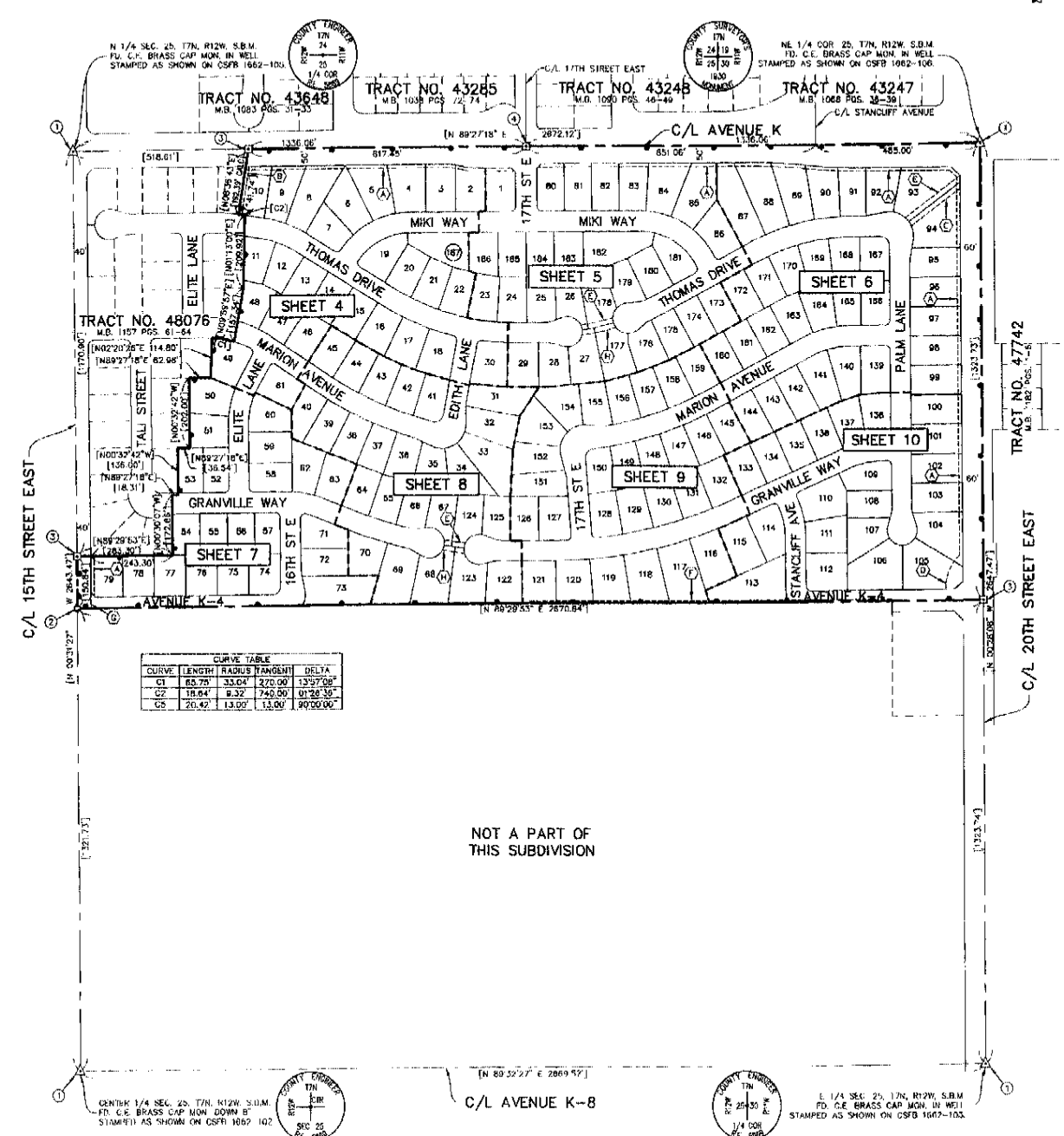
## SURVEY DETAIL AND INDEX MAP

TERRAIN DEVELOPMENT, INC.  
CARLOS A. ALBA L.S. 8583

187 LOTS  
LEGEND:

70.17 ACRES

- |   |   |
|---|---|
| <ul style="list-style-type: none"> <li>⊙ INDICATES BOUNDARY OF THE LAND BEING SUBDIVIDED BY THIS MAP</li> <li>⊙ FOUND MONUMENT AS DESCRIBED</li> <li>⊙ FOUND MONUMENT (2" IRON PIPE TAGGED L.S. 2304) SET PER TRACT NO. 48076</li> <li>⊙ FOUND MONUMENT (SPIKE &amp; WASHER TAGGED L.S. 2304) SET PER TRACT NO. 48076</li> <li>⊙ FOUND MONUMENT (SPIKE &amp; WASHER TAGGED R.C.E. 21027) SET PER TRACT NO. 43285</li> <li>⊙ SPIKE AND WASHER TAGGED "LS 9583" TO BE SET</li> <li>⊙ RESTRICTED DIRECT VEHICULAR INGRESS AND EGRESS</li> <li>⊙ 10' WIDE LANDSCAPE EASEMENT DEDICATED TO THE CITY OF LANCASTER PER THIS MAP</li> <li>⊙ 10' WIDE DRAINAGE AND STORM DRAIN EASEMENT DEDICATED TO THE CITY OF LANCASTER PER THIS MAP</li> <li>⊙ 15' WIDE DRAINAGE AND STORM DRAIN EASEMENT DEDICATED TO THE CITY OF LANCASTER PER THIS MAP</li> </ul> | <ul style="list-style-type: none"> <li>⊙ VARIABLE WIDTH DRAINAGE AND LANDSCAPE EASEMENT DEDICATED TO THE CITY OF LANCASTER PER THIS MAP</li> <li>⊙ 15' WIDE SANITARY SEWER EASEMENT DEDICATED TO THE CITY OF LANCASTER PER THIS MAP</li> <li>⊙ EXISTING PUBLIC UTILITY EASEMENT TO SOUTHERN CALIFORNIA EDISON BY DEED RECORDED MARCH 1, 1951 AS INSTRUMENT NO. 2452 IN BOOK 35891 PAGE 29 TO REMAIN</li> <li>⊙ EXISTING PIPE LINE EASEMENT TO SOUTHERN CALIFORNIA GAS COMPANY BY DOCUMENT RECORDED MARCH 4, 1966 AS INSTRUMENT NO. 88-277867, OFFICIAL RECORDS</li> <li>⊙ 15' WIDE DRAINAGE AND PEDESTRIAN ACCESS EASEMENT DEDICATED TO THE CITY OF LANCASTER PER THIS MAP</li> <li>⊙ RECORD AND MEASURED DISTANCE PER TRACT NO. 48076 RECORDED IN BOOK 1157, PAGES 61-64.</li> </ul> |
|---|---|



CURVE	LENGTH	RADIUS	PERCENT	DELTA
C1	65.79'	33.04'	270.00'	13°57'08"
C2	18.84'	9.32'	740.00'	01°28'30"
C5	20.42'	13.00'	13.00'	90°00'00"

COUNTY SURVEYOR  
 TERRY J. HARRIS  
 25 30 00  
 1/4 COR. SEC. 25, T.7N, R.12W, S.B.M.  
 F.D. C.E. BRASS CAP MON. IN WELL  
 STAMPED AS SHOWN ON CSFB 1667-102