

SCALE 1" = 200'

TRACT NO. 060987

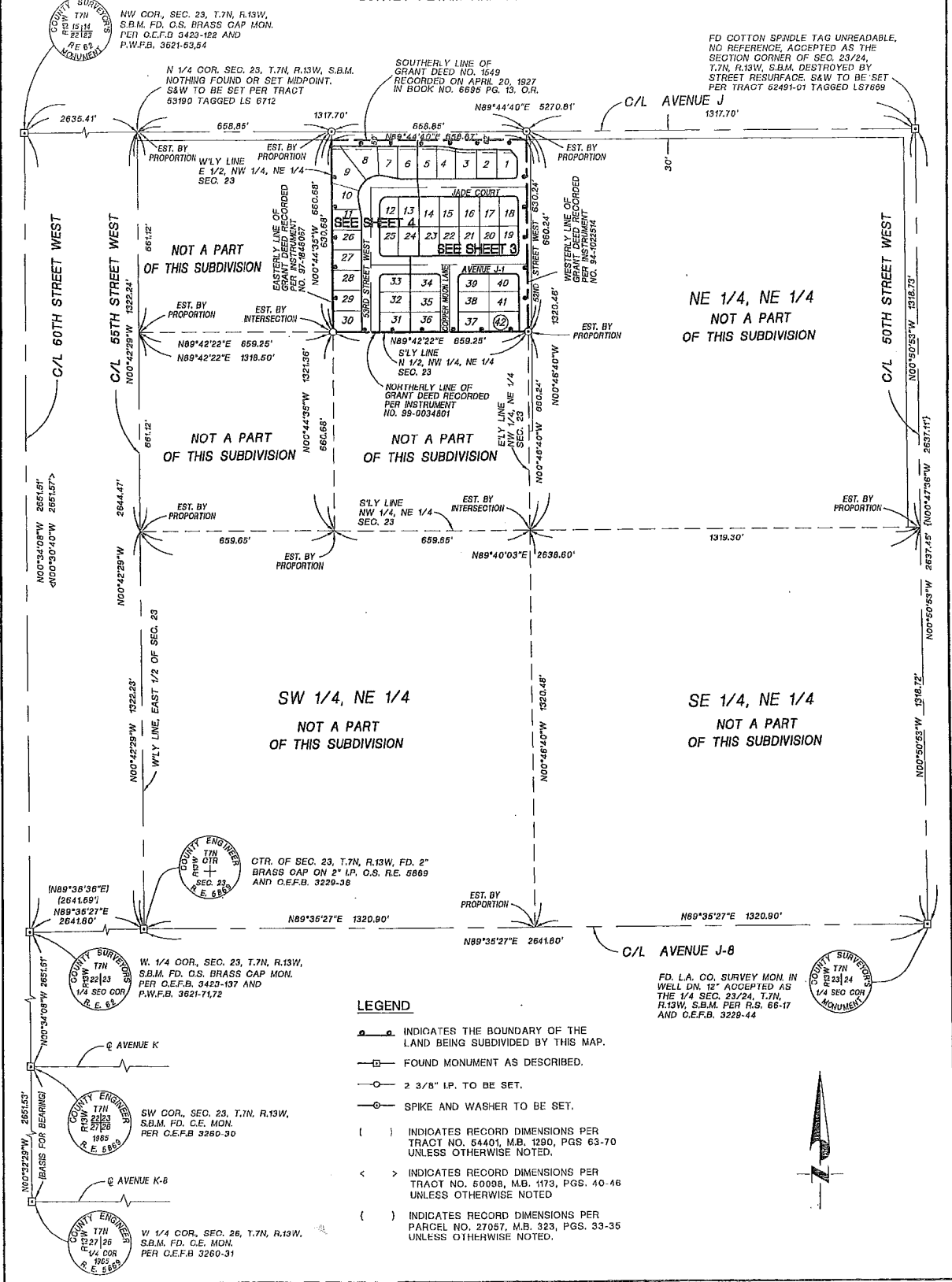
SHEET 3 OF 5 SHEETS

IN THE CITY OF LANCASTER
 COUNTY OF LOS ANGELES, STATE OF CALIFORNIA
 PACIFIC COAST CIVIL, INC.
 RANDALL A. GREENWOOD R.C.E. 29220

42 LOTS

9.54 ACRES

SURVEY DETAIL AND INDEX MAP



COUNTY SURVEYOR
 T7N
 R13W
 S22E
 RE 61
 MONUMENT

NW COR. SEC. 23, T.7N, R.13W,
 S.B.M. FD. O.S. BRASS CAP MON.
 PER O.C.F.B. 5423-122 AND
 P.W.F.B. 3621-63,54

N 1/4 COR. SEC. 23, T.7N, R.13W, S.B.M.
 NOTHING FOUND OR SET MIDPOINT.
 SSW TO BE SET PER TRACT
 53190 TAGGED LS 6712

SOUTHERLY LINE OF
 GRANT DEED NO. 1649
 RECORDED ON APRIL 20, 1927
 IN BOOK NO. 6895 PG. 13, C.R.

FD COTTON SPINDLE TAG UNREADABLE,
 NO REFERENCE, ACCEPTED AS THE
 SECTION CORNER OF SEC. 23/24,
 T.7N, R.13W, S.B.M. DESTROYED BY
 STREET RESURFACE SSW TO BE SET
 PER TRACT 62491-01 TAGGED LS7699

C/L 60TH STREET WEST
 N00°34'08"W 2651.51'
 S00°30'40"W 2651.57'

C/L 65TH STREET WEST
 N00°42'29"W 1322.24'
 661.12'

C/L 50TH STREET WEST
 N00°42'29"W 1322.23'
 WLY LINE, EAST 1/2 OF SEC. 23
 N00°42'29"W 1322.23'

C/L 50TH STREET WEST
 N00°50'55"W 1316.72'
 2637.11'

C/L AVENUE J-B
 N00°50'55"W 1316.72'
 2637.11'

SW 1/4, NE 1/4
 NOT A PART
 OF THIS SUBDIVISION

SE 1/4, NE 1/4
 NOT A PART
 OF THIS SUBDIVISION

NOT A PART
 OF THIS SUBDIVISION

NE 1/4, NE 1/4
 NOT A PART
 OF THIS SUBDIVISION

COUNTY SURVEYOR
 T7N
 R13W
 S22E
 RE 61
 MONUMENT

W 1/4 COR. SEC. 23, T.7N, R.13W,
 S.B.M. FD. O.S. BRASS CAP MON.
 PER O.C.F.B. 3423-197 AND
 P.W.F.B. 3621-7172

COUNTY ENGINEER
 T7N
 R13W
 S22E
 RE 61
 MONUMENT

SW COR. SEC. 23, T.7N, R.13W,
 S.B.M. FD. C.E. MON.
 PER O.C.F.B. 3260-30

COUNTY ENGINEER
 T7N
 R13W
 S22E
 RE 61
 MONUMENT

W 1/4 COR. SEC. 26, T.7N, R.13W,
 S.B.M. FD. C.E. MON.
 PER O.C.F.B. 3260-31

COUNTY ENGINEER
 T7N
 R13W
 S22E
 RE 61
 MONUMENT

CTR. OF SEC. 23, T.7N, R.13W, FD. 2"
 BRASS CAP ON 2" I.P. O.S. R.E. 5869
 AND O.C.F.B. 3229-36

COUNTY SURVEYOR
 T7N
 R13W
 S22E
 RE 61
 MONUMENT

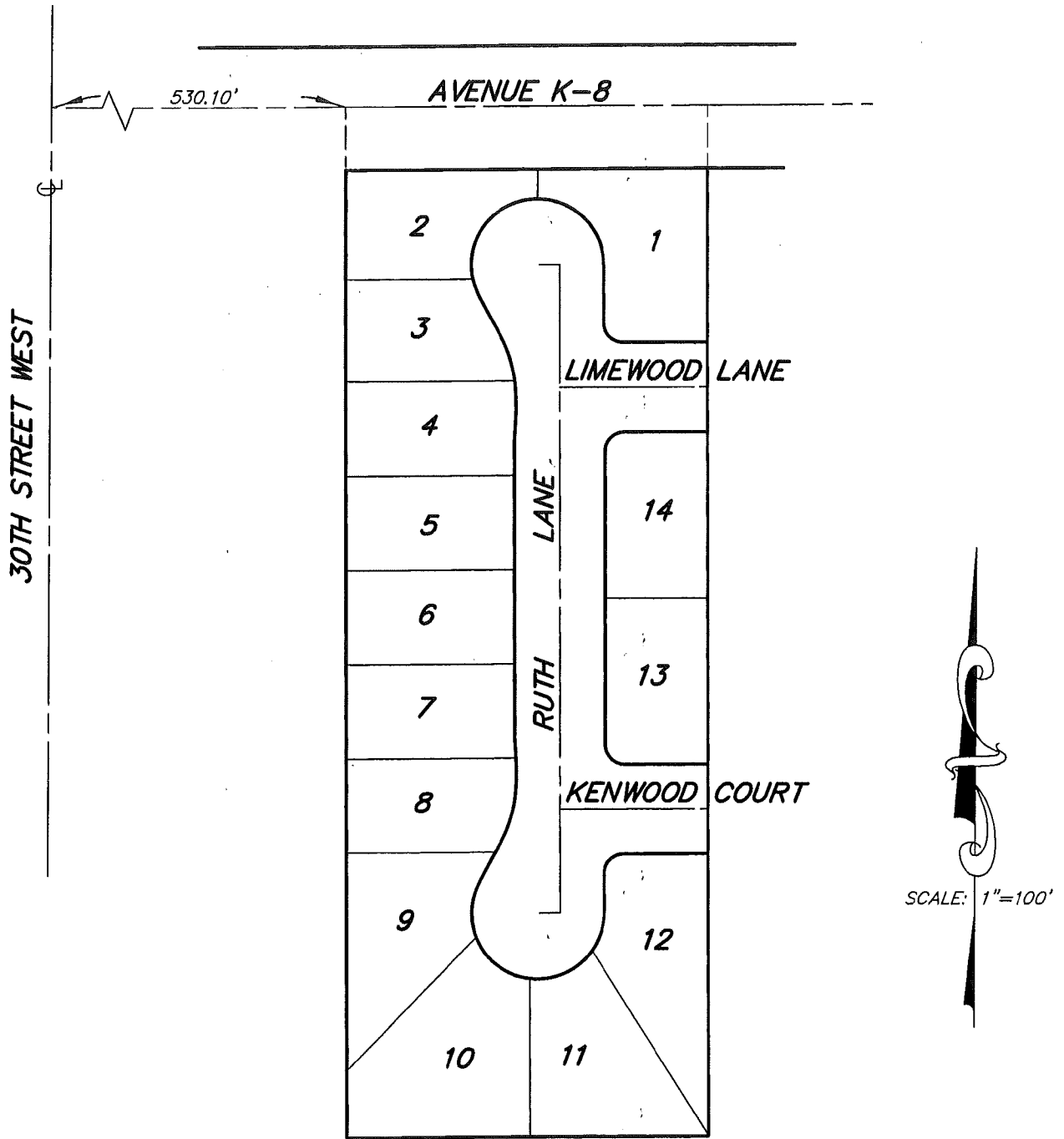
FD. L.A. CO. SURVEY MON. IN
 WELL DN. 12" ACCEPTED AS
 THE 1/4 SEC. 23/24, T.7N,
 R.13W, S.B.M. PER R.S. 66-17
 AND O.C.F.B. 3229-44

LEGEND

- INDICATES THE BOUNDARY OF THE LAND BEING SUBDIVIDED BY THIS MAP.
- FOUND MONUMENT AS DESCRIBED.
- 2 3/8" I.P. TO BE SET.
- ⊙— SPIKE AND WASHER TO BE SET.
- () INDICATES RECORD DIMENSIONS PER TRACT NO. 54401, M.B. 1290, PGS 63-70 UNLESS OTHERWISE NOTED.
- < > INDICATES RECORD DIMENSIONS PER TRACT NO. 50098, M.B. 1173, PGS. 40-46 UNLESS OTHERWISE NOTED.
- { } INDICATES RECORD DIMENSIONS PER PARCEL NO. 27057, M.B. 323, PGS. 33-35 UNLESS OTHERWISE NOTED.



TRACT NO. 062326



GRAPHIC SCALE



(IN FEET)
1 inch = 100 ft.

TRACT NO. 47775

IN THE CITY OF LANCASTER, COUNTY OF LOS ANGELES,
STATE OF CALIFORNIA
HUNSAKER & ASSOCIATES LOS ANGELES, INC.
MIKE KENNADA P.L.S. 5642

61 LOTS

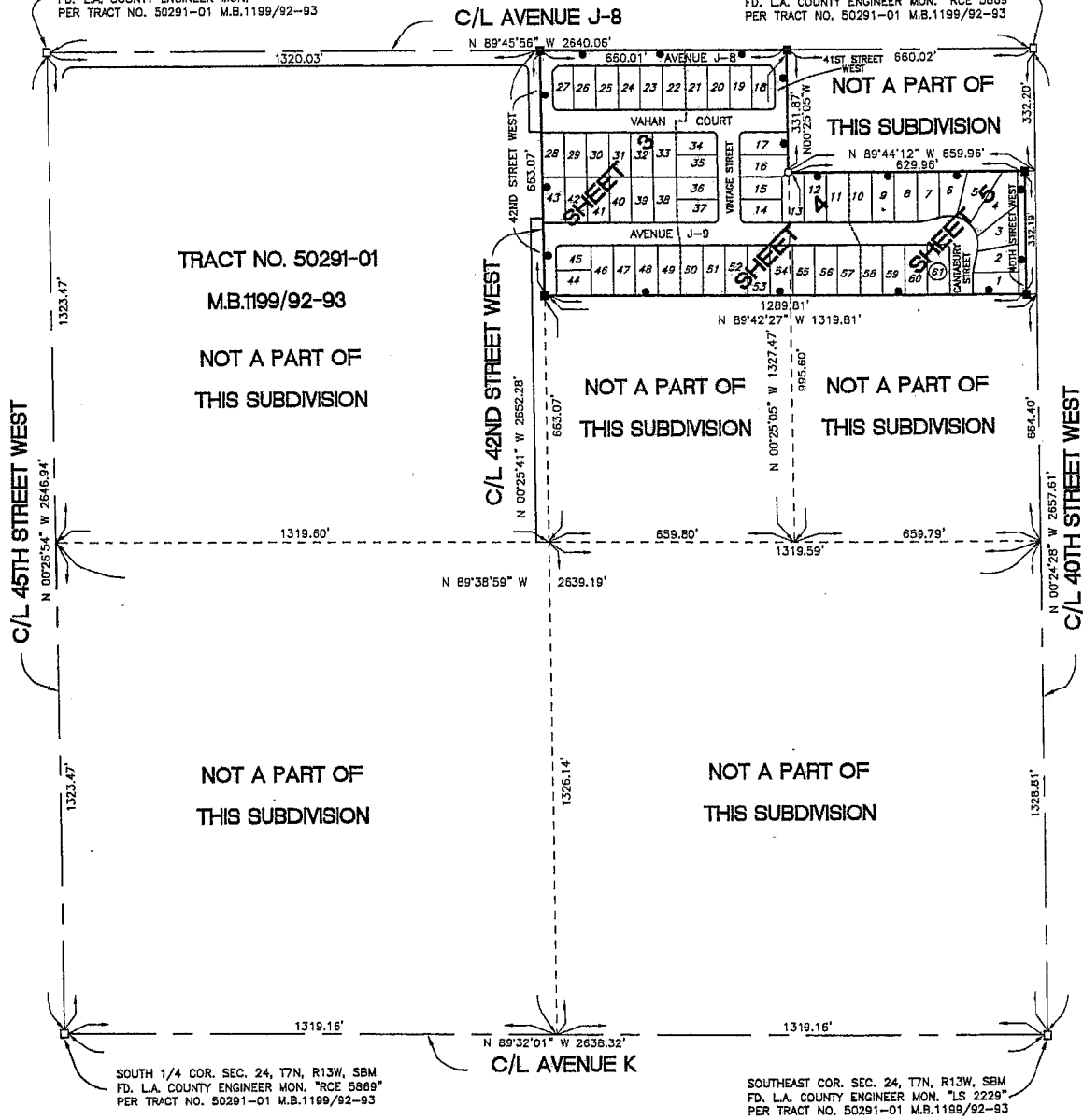
14.85 ACRES



SURVEY DETAIL AND INDEX MAP

CENTER OF SEC. 24, T7N, R13W, SBM
FD. L.A. COUNTY ENGINEER MON.
PER TRACT NO. 50291-01 M.B.1199/92-93

EAST 1/4 COR. SEC. 24, T7N, R13W, SBM
FD. L.A. COUNTY ENGINEER MON. "RCE 5869"
PER TRACT NO. 50291-01 M.B.1199/92-93



LEGEND

- INDICATES THE BOUNDARY OF THE LAND BEING SUBDIVIDED BY THIS MAP
- FOUND MONUMENT AS NOTED
- 2 3/8" O.D. IRON PIPE TAGGED "LS 5642" TO BE SET, 6" DOWN
- SPIKE AND WASHER TAGGED "LS 5642" TO BE SET