

# VESTING TRACT NO. 53297

IN THE CITY OF LANCASTER, COUNTY OF LOS ANGELES,  
STATE OF CALIFORNIA

## SURVEY DETAIL AND INDEX MAP

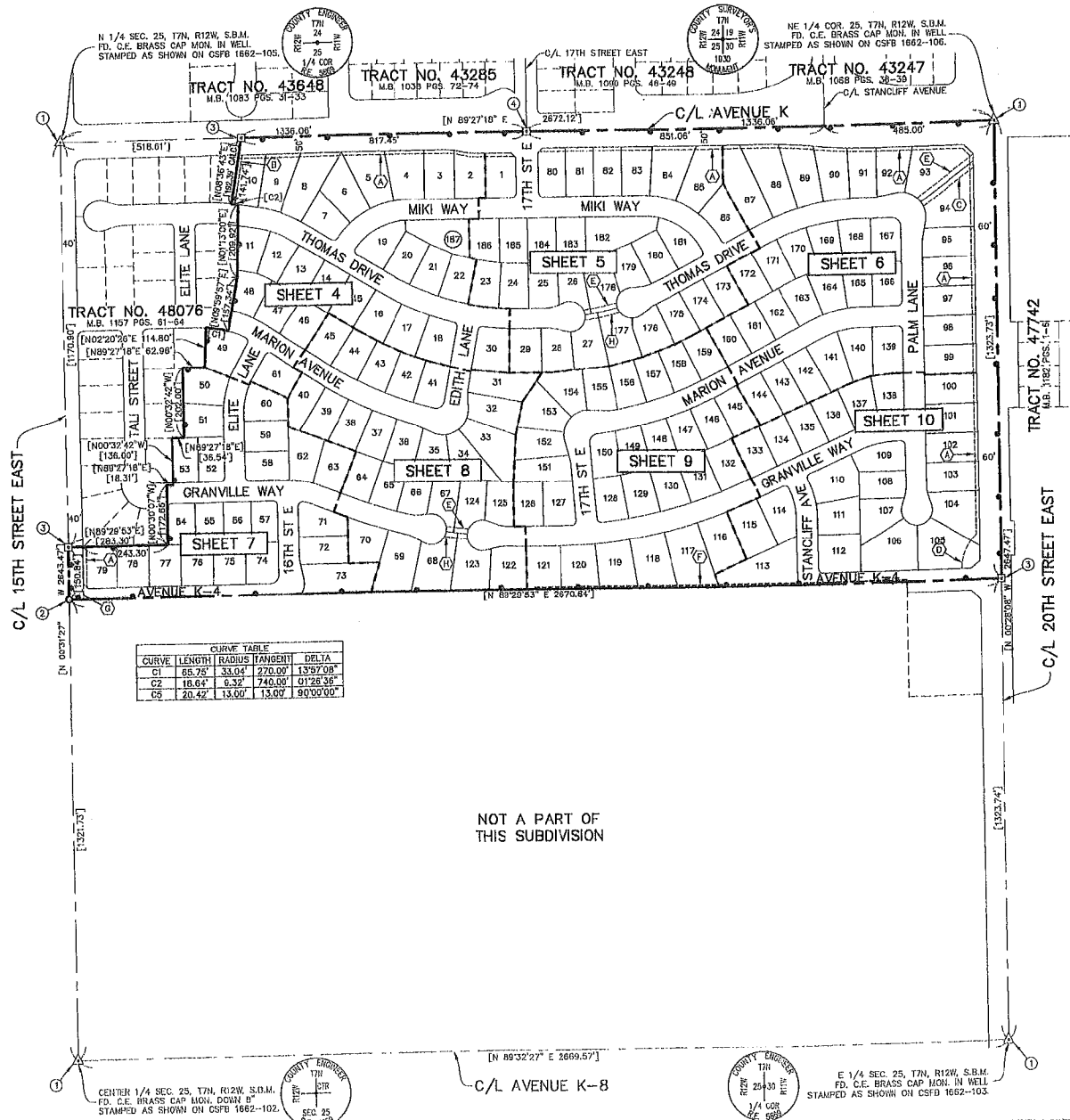
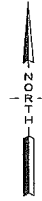
TERRAIN DEVELOPMENT, INC.  
CARLOS A. ALBA L.S. 6583

70.17 ACRES

187 LOTS  
LEGEND:

- ① INDICATES BOUNDARY OF THE LAND BEING SUBDIVIDED BY THIS MAP
- ② FOUND MONUMENT AS DESCRIBED
- ③ FOUND MONUMENT (2" IRON PIPE TAGGED L.S. 2304) SET PER TRACT NO. 48076
- ④ FOUND MONUMENT (SPIKE & WASHER TAGGED L.S. 2304) SET PER TRACT NO. 48076
- ⑤ FOUND MONUMENT (SPIKE & WASHER TAGGED R.C.E. 21022) SET PER TRACT NO. 43285
- ⑥ SPIKE AND WASHER TAGGED 'LS 0583' TO BE SET
- ⑦ RESTRICTED DIRECT VEHICULAR INGRESS AND EGRESS
- ⑧ 10' WIDE LANDSCAPE EASEMENT DEDICATED TO THE CITY OF LANCASTER PER THIS MAP
- ⑨ 10' WIDE DRAINAGE AND STORM DRAIN EASEMENT DEDICATED TO THE CITY OF LANCASTER PER THIS MAP
- ⑩ 15' WIDE DRAINAGE AND STORM DRAIN EASEMENT DEDICATED TO THE CITY OF LANCASTER PER THIS MAP

- ⑪ VARIABLE WIDTH DRAINAGE AND LANDSCAPE EASEMENT DEDICATED TO THE CITY OF LANCASTER PER THIS MAP
- ⑫ 15' WIDE SANITARY SEWER EASEMENT DEDICATED TO THE CITY OF LANCASTER PER THIS MAP
- ⑬ EXISTING PUBLIC UTILITY EASEMENT TO SOUTHERN CALIFORNIA EDISON BY DEED RECORDED MARCH 1, 1951 AS INSTRUMENT NO. 2452 IN BOOK 33691 PAGE 28 TO REMAIN
- ⑭ EXISTING PIPE LINE EASEMENT TO SOUTHERN CALIFORNIA GAS COMPANY BY DOCUMENT RECORDED MARCH 4, 1966 AS INSTRUMENT NO. 86-277687, OFFICIAL RECORDS
- ⑮ 15' WIDE DRAINAGE AND PEDESTRIAN ACCESS EASEMENT DEDICATED TO THE CITY OF LANCASTER PER THIS MAP
- [ ] RECORD AND MEASURED DISTANCE PER TRACT NO. 48076 RECORDED IN BOOK 1167, PAGES 61-64.



CURVE	LENGTH	RADIUS	TANGENT	DELTA
C1	65.75'	33.04'	270.00'	1397.08'
C2	18.64'	9.32'	740.00'	0123.56'
C3	20.42'	13.00'	13.00'	8000.00'

NOT A PART OF  
THIS SUBDIVISION

C/L AVENUE K-8

E 1/4 SEC. 25, T7N, R12W, S.B.M. FD. C.E. BRASS CAP MON. IN WELL STAMPED AS SHOWN ON CSFB 1662-105