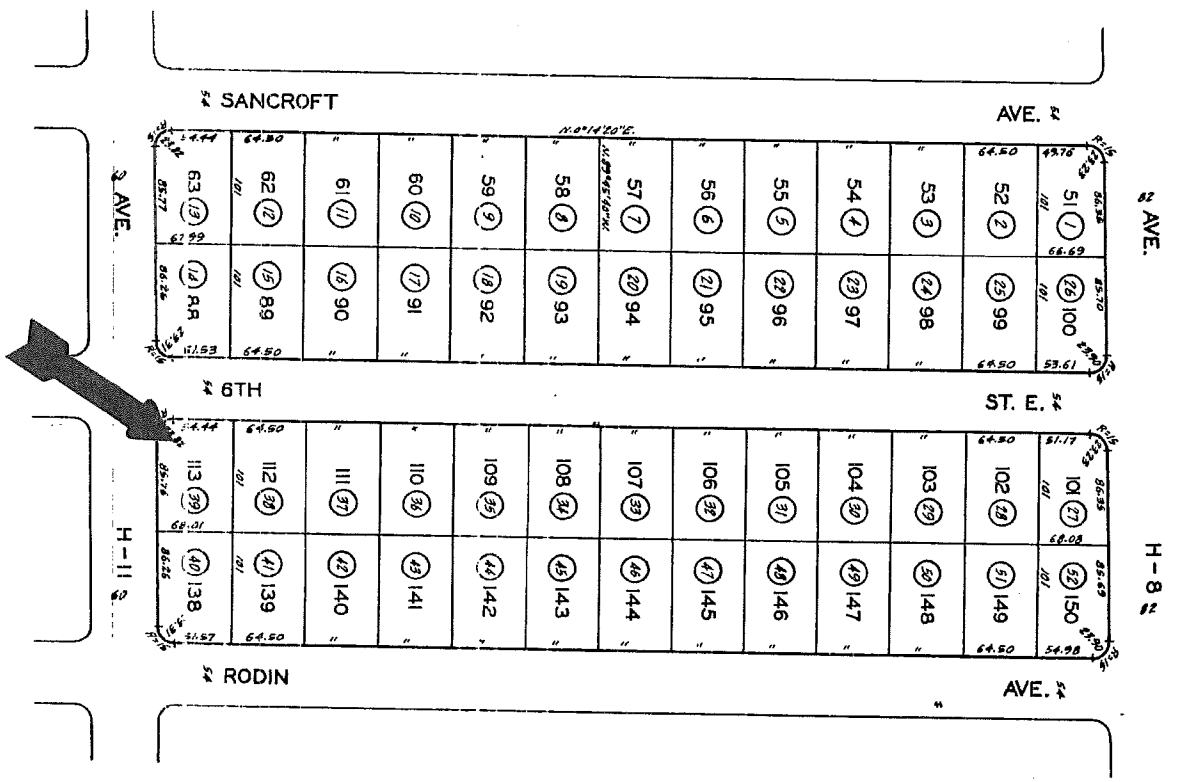
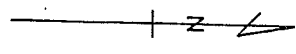
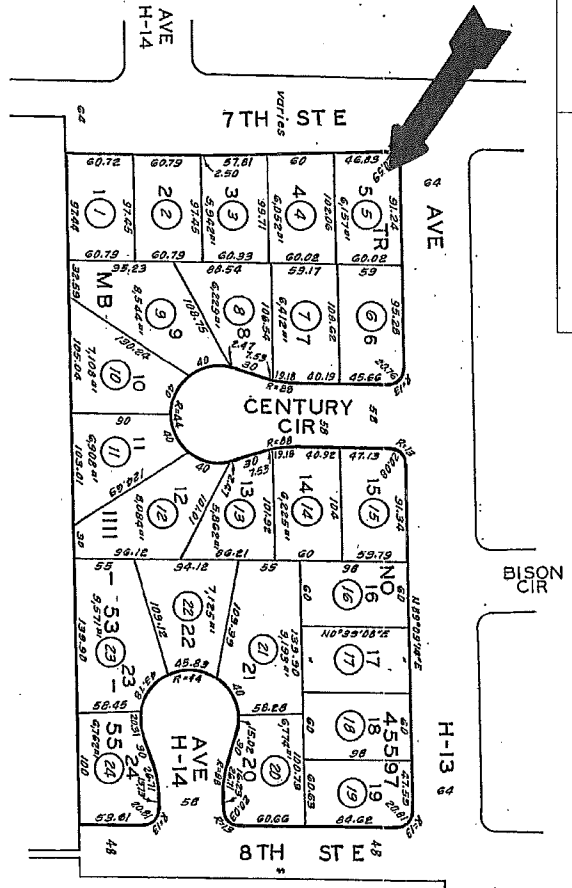
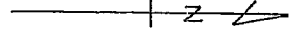


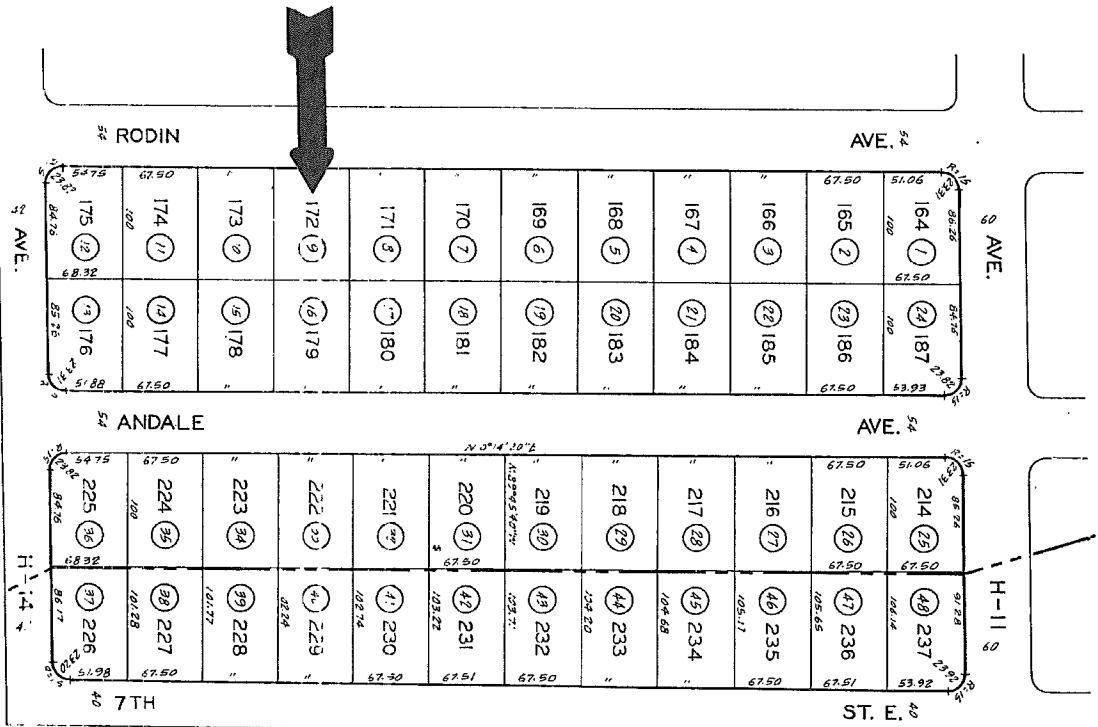
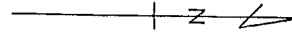
### EXHIBIT "A"

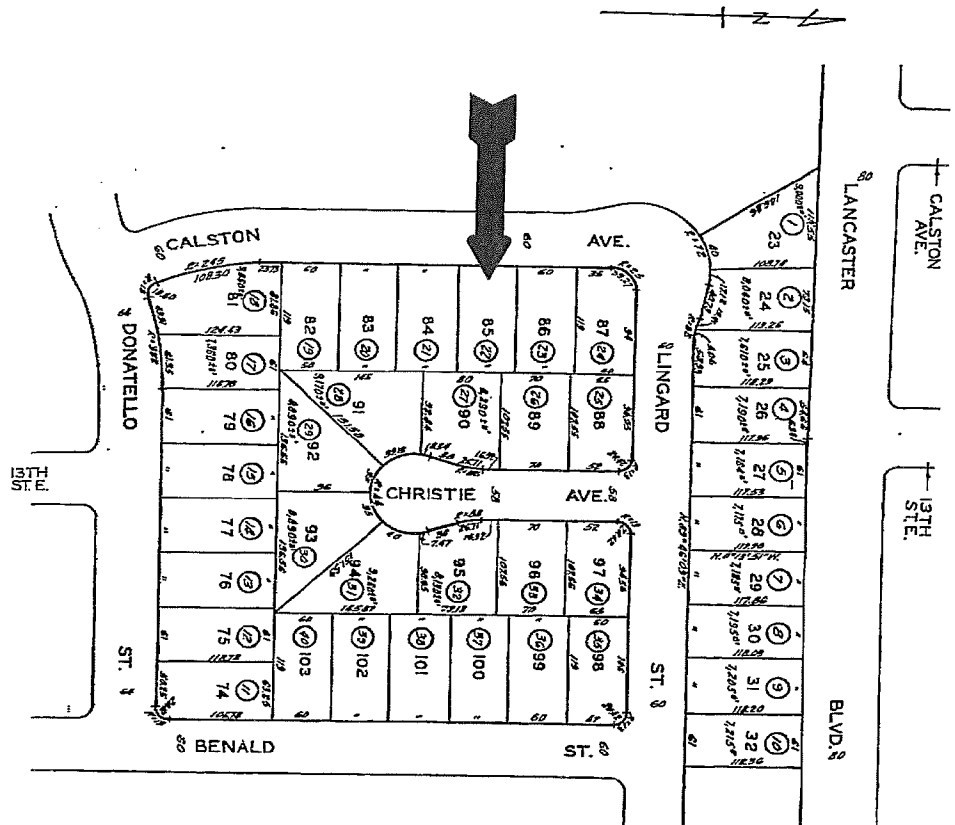
Acquisition of Real Properties between the Lancaster Redevelopment Agency and various agencies as part of the Neighborhood Foreclosure Preservation Homeownership Program for properties located within the Lowtree, Trend, Mariposa, Desert View, Challenger and Piute areas.

| # | Property Address      | Area        | Sales Price | Property Owner  | Real Estate Firm          | Agent         |
|---|-----------------------|-------------|-------------|---|---------------------------|---------------|
| 1 | 45504 6th Street East | Piute       | \$ 77,900   | US Bank National Association as Trustee for the Structured Asset Securities Corporation, Series 2005-AR1  | Century 21 Doung Anderson | JC Boucher    |
| 2 | 45306 7th Street East | Piute       | \$ 79,900   | Deutsche Bank National Trust Company, as Trustee for the Registered Holders of Argent Securities, Inc., Asset-Backed Pass-Through Certificates, Series 2005-W2  | Troth Realtors            | Mark Troth    |
| 3 | 45324 Rodin Avenue    | Piute       | \$ 77,500   | Citibank, NA, as Trustee for Bear Stearns Asset-Backed Securities 2007-2  | Keller Williams           | Jason Chapman |
| 4 | 44734 Calston Avenue  | Challenger  | \$ 90,000   | Deutsche Bank National Trust Company, as Trustee for the Registered Holders of Argent Securities, Inc., Asset-Backed Pass-Through Certificates, Series 2006-M2 under the Pooling and Servicing Agreement dated as of August 1, 2006, without recourse | Troth Realtors            | Mark Troth    |
| 5 | 1347 W. Avenue I      | Desert View | \$ 70,900   | Countrywide Home Loans, Inc. for the Benefit of the Bank of New York  | Quantum Realtors          | Ed Rosenberg  |
|   |                       |             |             |   |                           |               |
|   |                       |             |             |   |                           |               |

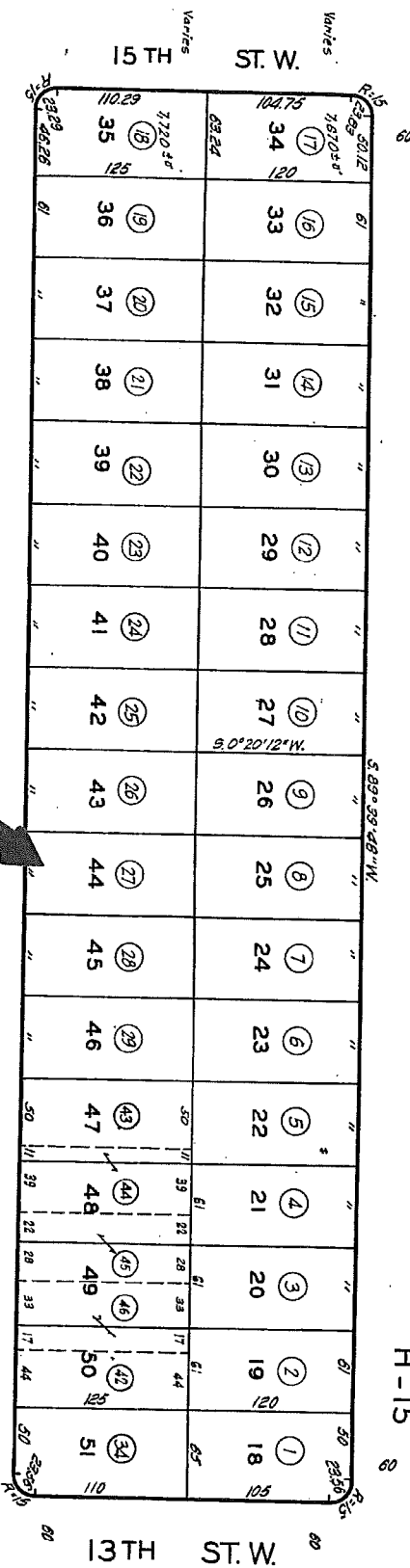




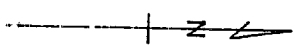




142  
AVE.



8 AVE. H-15 8



I  
24

13TH ST. W.