

SCALE 1" = 200'

TRACT NO. 060198

SHEET 3 OF 11

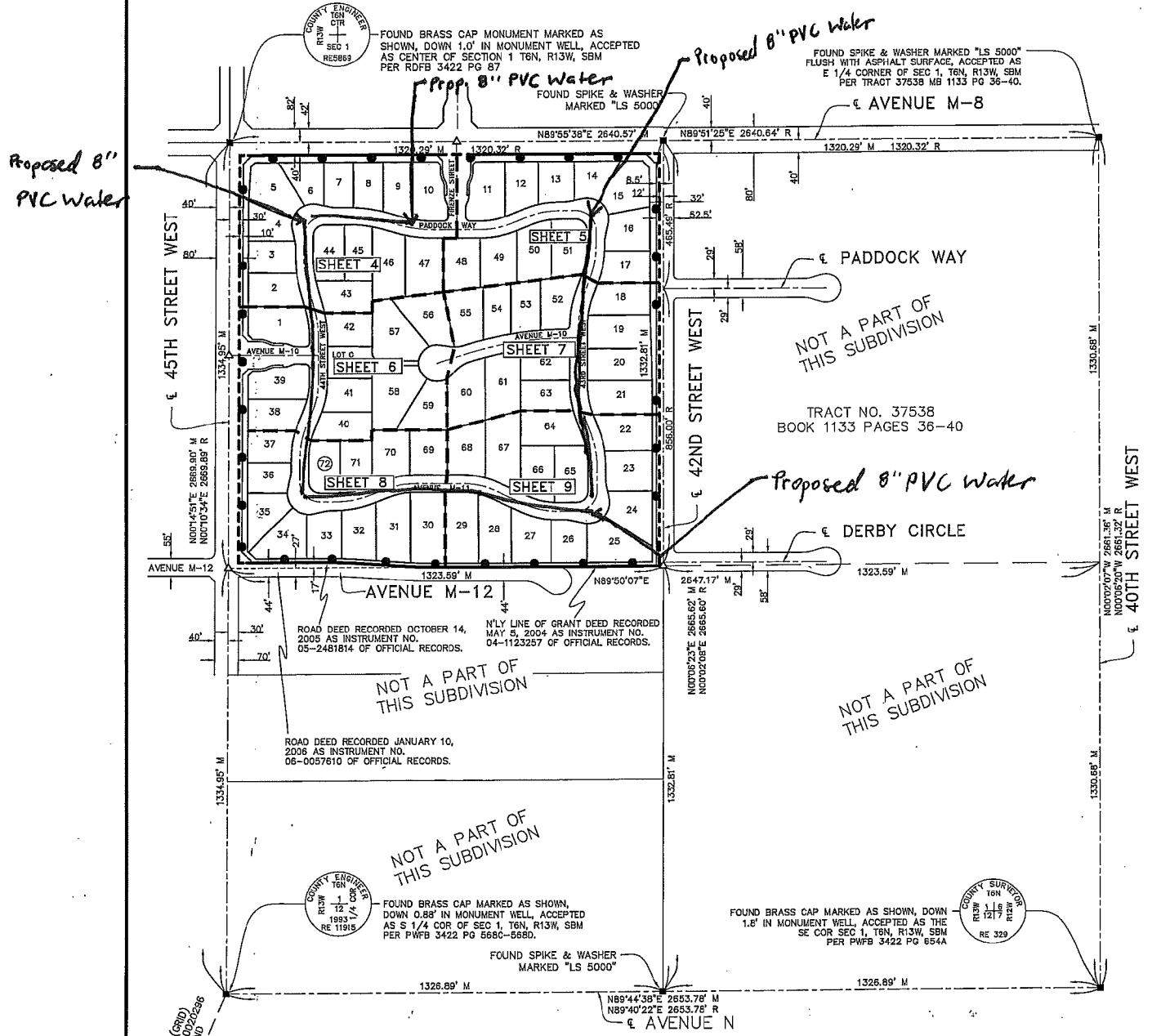
IN THE CITY OF LANCASTER, COUNTY OF LOS ANGELES,
STATE OF CALIFORNIA

KENNETH J. WILSON P.L.S. 7911

72 LOTS

38.02 ACRES

SURVEY DETAIL AND INDEX MAP



10,496.05' (GRID)
MULTIPLY BY 1.0020296
FOR GROUND

34,002.23' (GRID)
MULTIPLY BY 1.0020082
FOR GROUND

QHTP

LNJ

NOTE:
THE BASIS OF BEARINGS FOR THIS SURVEY IS THE CALIFORNIA COORDINATE SYSTEM, ZONE 5, NAD83 (EPOCH 2004.0) AS DETERMINED LOCALLY BY A LINE BETWEEN CONTINUOUS GLOBAL POSITIONING STATIONS (CGPS) AND/OR CONTINUOUS OPERATING REFERENCE STATIONS (CORS) QHTP & LNJ BEING N69-12-11E AS DERIVED FROM GEODETIC VALUES PUBLISHED BY THE CALIFORNIA SPATIAL REFERENCE CENTER (CSRC). ALL MEASUREMENTS SHOWN HEREON ARE GROUND U.S. SURVEY FEET UNLESS OTHERWISE NOTED.

- LEGEND**
- INDICATES THE BOUNDARY OF THE LAND BEING SUBDIVIDED BY THIS MAP
 - M - MEASURED
 - R - RECORD DATA PER TRACT NO. 37538 MAP BOOK 1133 PAGES 36-40
 - 2 3/8" IRON PIPE TO BE SET
 - ▲ SPIKE AND WASHER TO BE SET
 - MONUMENT FOUND AS NOTED.
 - ▲ CONTINUOUSLY OPERATING REFERENCE STATION (CORS)

SCALE: 1" = 100'

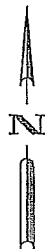
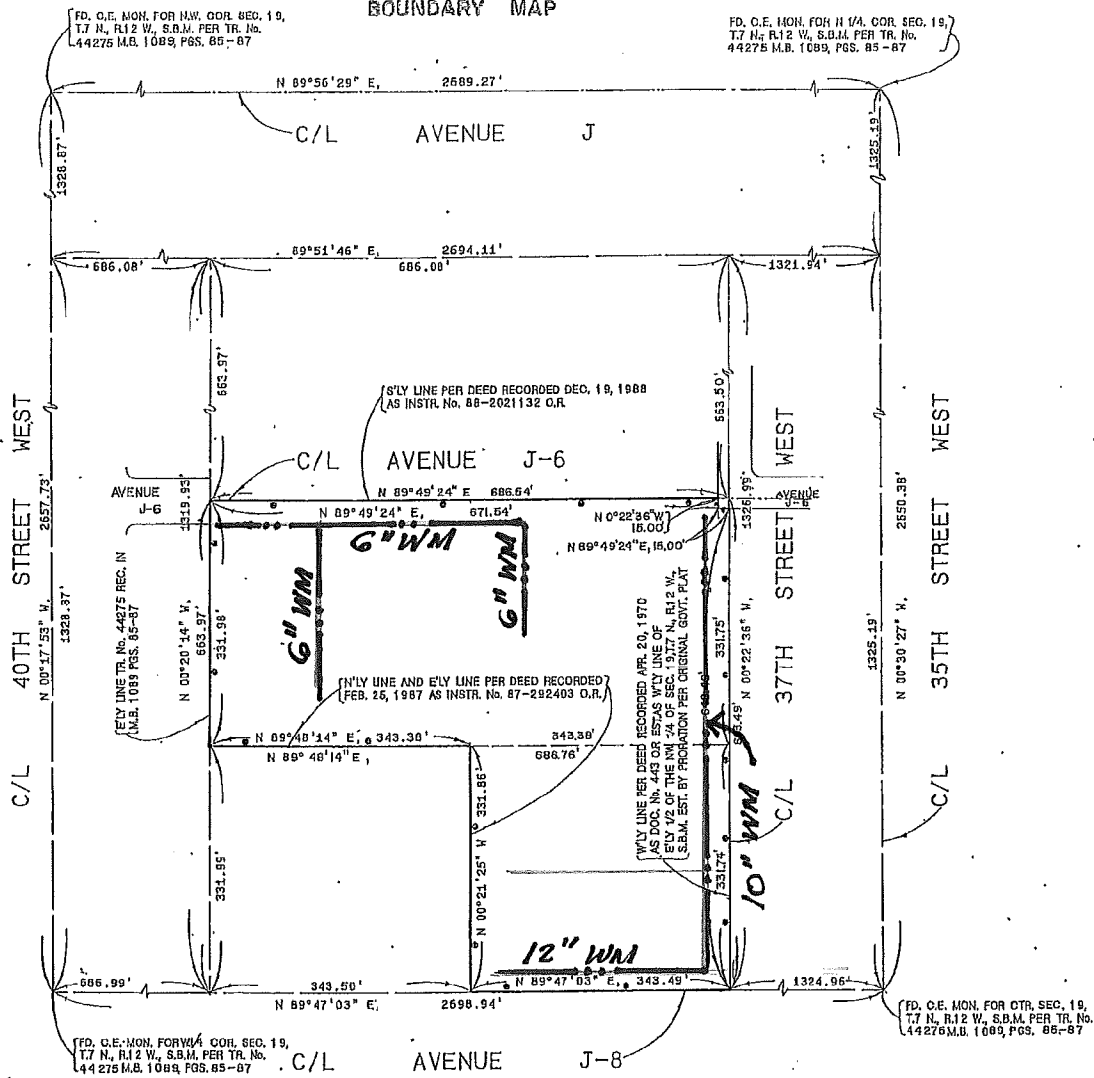
SHEET 2 OF 4 SHEETS

TRACT No. 46601
IN THE CITY OF LANCASTER, COUNTY OF
LOS ANGELES, STATE OF CALIFORNIA
LAWRENCE P. CUSHMAN R.C.E. 29088

33 LOTS

7.85 ACRES

BOUNDARY MAP



INDICATES THE BOUNDARY OF THE LAND BEING
SUBDIVIDED BY THIS MAP.

I HEREBY CERTIFY THAT ALL CERTIFICATES HAVE BEEN
FILED AND DEPOSITS HAVE BEEN MADE THAT ARE
REQUIRED UNDER THE PROVISIONS OF SECTIONS 60408
AND 60480 OF THE SUBDIVISION MAP ACT.

EXECUTIVE OFFICER-CLERK OF THE BOARD
OF SUPERVISORS OF THE COUNTY OF LOS
ANGELES, STATE OF CALIFORNIA
BY *Lawrence P. Cushman*
DEPUTY



I HEREBY CERTIFY THAT SECURITY IN THE AMOUNT OF
\$ 300.00 HAS BEEN FILED WITH THE
CLERK OF THE BOARD OF SUPERVISORS OF THE COUNTY OF
LOS ANGELES AS SECURITY FOR THE PAYMENT OF TAXES
AND SPECIAL ASSESSMENTS COLLECTED AS TAXES ON THE
LAND SHOWN ON MAP OF TRACT NO. / PARCEL MAP NO.
46601 AS REQUIRED BY LAW.

EXECUTIVE OFFICER-CLERK OF THE BOARD
OF SUPERVISORS OF THE COUNTY OF LOS
ANGELES, STATE OF CALIFORNIA
BY *Lawrence P. Cushman*
DEPUTY



TRACT NO. 48534-03

NGELES

14 LOTS

