

EXHIBIT A
ACCEPTANCE OF IMPROVEMENTS
LANCASTER LANDSCAPE MAINTENANCE DISTRICT NO. 1
12-Nov-08

PROJECT NUMBER	LOCATION	DEVELOPER	1ST YEAR MAINTENANCE COST	DATE OF COUNCIL APPROVED	RESOLUTION NO. INITIATING PROCEEDINGS FOR ANNEXATION INTO LMD	RESOLUTION NO. DECLARING ITS INTENTION TO ANNEX TO TERRITORY	RESOLUTION NO. CONFIRMING THE DIAGRAM AND ASSESSMENT
TR 060987	Southwest corner of Avenue I and 52nd St. W.	Larwin Company	\$ 3,487.68	10/25/2005	05-228	05-229	05-232
Total:			\$ 3,487.68				

SCALE 1" = 200'

TRACT NO. 060987

SHEET 3 OF 5 SHEETS

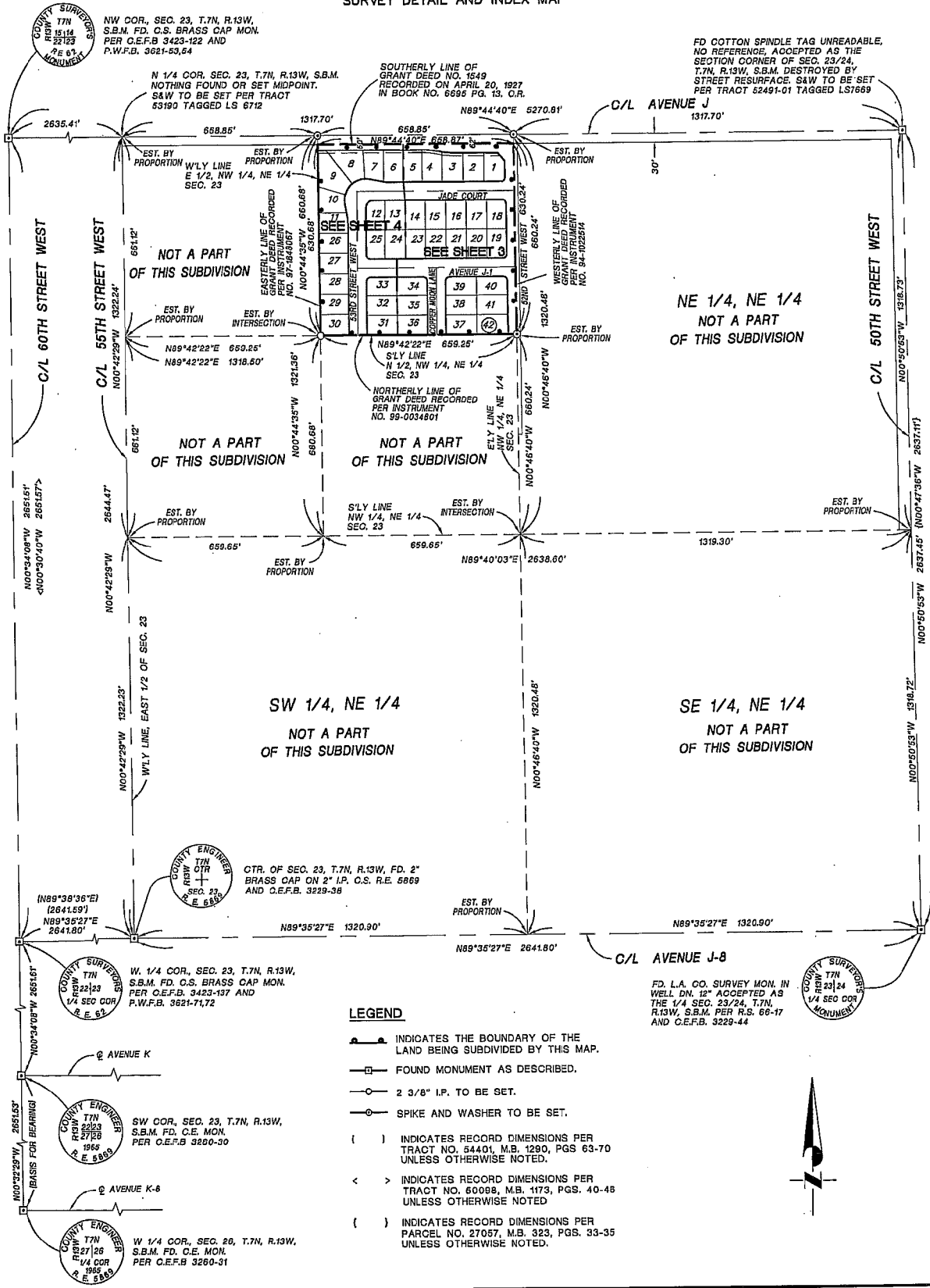
IN THE CITY OF LANCASTER
COUNTY OF LOS ANGELES, STATE OF CALIFORNIA

PACIFIC COAST CIVL, INC.
RANDALL A. GREENWOOD R.C.E. 29220

42 LOTS

9.54 ACRES

SURVEY DETAIL AND INDEX MAP



COUNTY SURVEYOR
T7N
R13W
S2123
P.E. 61
MONUMENT

NW COR., SEC. 23, T.7N, R.13W,
S.B.M. FD. C.S. BRASS CAP MON.
PER C.E.F.B. 3423-122 AND
P.W.F.B. 3621-53,54

SOUTHERLY LINE OF
GRANT DEED NO. 1549
RECORDED ON APRIL 20, 1927
IN BOOK NO. 6896 PG. 13, C.R.

FD COTTON SPINDLE TAG UNREADABLE,
NO REFERENCE, ACCEPTED AS THE
SECTION CORNER OF SEC. 23/24,
T.7N, R.13W, S.B.M. DESTROYED BY
STREET SURFACE, SAW TO BE SET
PER TRACT 52491-01 TAGGED LST669

NOT A PART
OF THIS SUBDIVISION

NE 1/4, NE 1/4
NOT A PART
OF THIS SUBDIVISION

NOT A PART
OF THIS SUBDIVISION

NOT A PART
OF THIS SUBDIVISION

SW 1/4, NE 1/4
NOT A PART
OF THIS SUBDIVISION

SE 1/4, NE 1/4
NOT A PART
OF THIS SUBDIVISION

COUNTY ENGINEER
T7N
R13W
S2123
R.E. 5885

CTR. OF SEC. 23, T.7N, R.13W, FD. 2"
BRASS CAP ON 2" I.P. C.S. R.E. 5889
AND C.E.F.B. 3229-38

COUNTY SURVEYOR
T7N
R13W
S2123
P.E. 61
MONUMENT

W. 1/4 COR., SEC. 23, T.7N, R.13W,
S.B.M. FD. C.S. BRASS CAP MON.
PER C.E.F.B. 3423-127 AND
P.W.F.B. 3621-71,72

FD. L.A. CO. SURVEY MON. IN
WELL DN. 12" ACCEPTED AS
THE 1/4 SEC. 23/24, T.7N,
R.13W, S.B.M. PER R.S. 66-17
AND C.E.F.B. 3229-44

COUNTY SURVEYOR
T7N
R13W
S2124
P.E. 61
MONUMENT

COUNTY ENGINEER
T7N
R13W
S2123
R.E. 5885

SW COR., SEC. 23, T.7N, R.13W,
S.B.M. FD. C.E. MON.
PER C.E.F.B. 3200-30

COUNTY ENGINEER
T7N
R13W
S2126
P.E. 61
MONUMENT

W. 1/4 COR., SEC. 26, T.7N, R.13W,
S.B.M. FD. C.E. MON.
PER C.E.F.B. 3260-31

LEGEND

- INDICATES THE BOUNDARY OF THE LAND BEING SUBDIVIDED BY THIS MAP.
- FOUND MONUMENT AS DESCRIBED.
- 2 3/8" I.P. TO BE SET.
- SPIKE AND WASHER TO BE SET.
- () INDICATES RECORD DIMENSIONS PER TRACT NO. 54401, M.B. 1290, PGS 63-70 UNLESS OTHERWISE NOTED.
- < > INDICATES RECORD DIMENSIONS PER TRACT NO. 60098, M.B. 1173, PGS. 40-48 UNLESS OTHERWISE NOTED.
- () INDICATES RECORD DIMENSIONS PER PARCEL NO. 27057, M.B. 323, PGS. 33-35 UNLESS OTHERWISE NOTED.

