

EXHIBIT A
ACCEPTANCE OF IMPROVEMENTS
LANCASTER DRAINAGE MAINTENANCE DISTRICT
December 9, 2008

PROJECT NUMBER	LOCATION	DEVELOPER	1ST YEAR MAINTENANCE COST	DATE OF COUNCIL APPROVED	ANNEXATION NO.	RESOLUTION NO. CONFIRMING THE DIAGRAMS & ASSESSMENTS & ORDERING THE ANNEXATION
TR 060198	Southeast corner of Ave M-8 between 42nd St W. and 45th St W.	Pulte Home Corporation	\$ 3,736.80	9/13/2005	05-72	05-207
TOTAL:			\$ 3,736.80			

SCALE 1" = 200'

TRACT NO. 060198

SHEET 3 OF 11

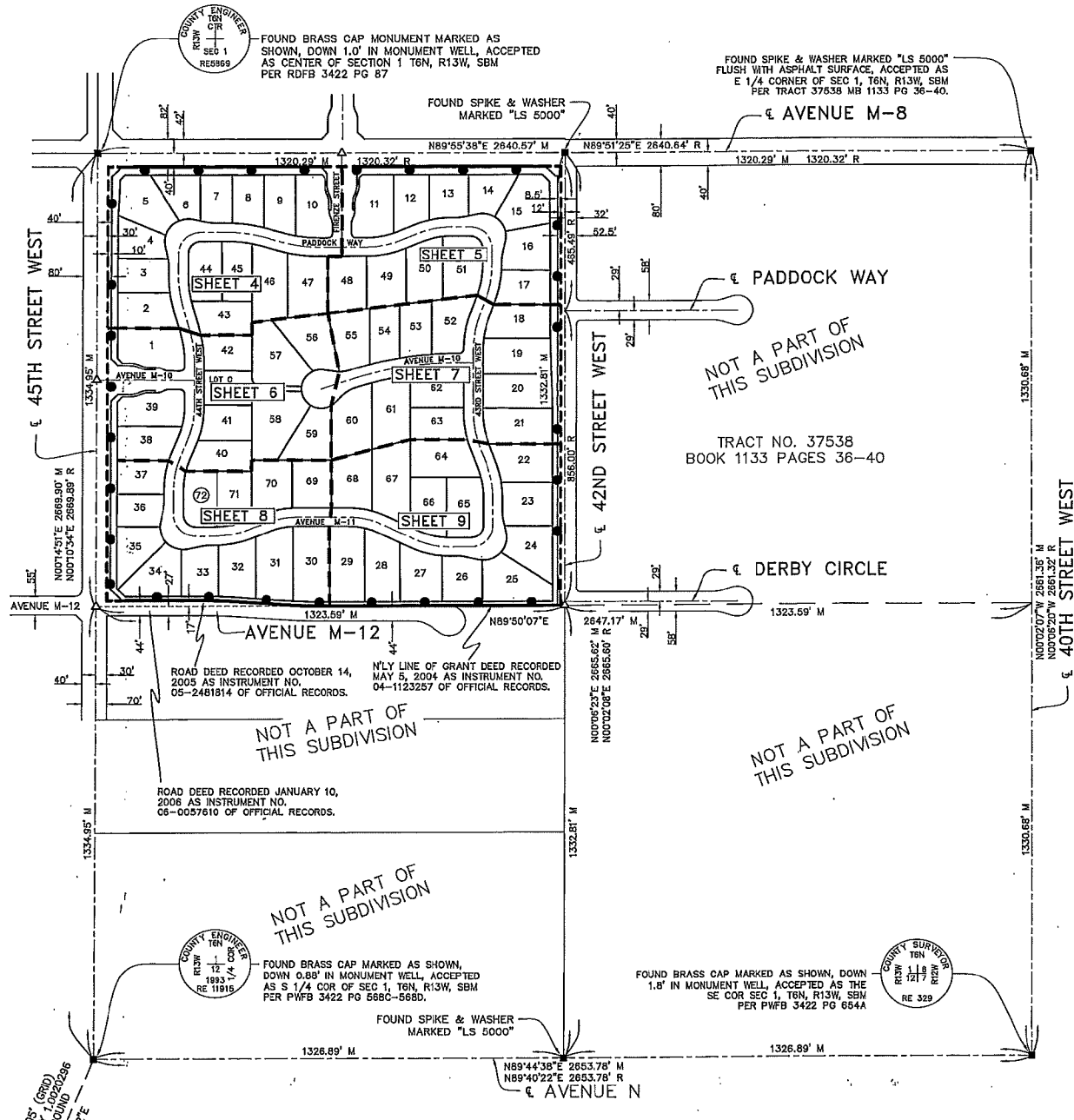
IN THE CITY OF LANCASTER, COUNTY OF LOS ANGELES,
STATE OF CALIFORNIA

KENNETH J. WILSON P.L.S. 7911

72 LOTS

SURVEY DETAIL AND INDEX MAP

38.02 ACRES



COUNTY ENGINEER
T6N
R13W
SEC 1
RE 8969

FOUND BRASS CAP MONUMENT MARKED AS SHOWN, DOWN 1.0' IN MONUMENT WELL, ACCEPTED AS CENTER OF SECTION 1 T6N, R13W, SBM PER RDFB 3422 PG 87

FOUND SPIKE & WASHER MARKED "LS 5000" FLUSH WITH ASPHALT SURFACE, ACCEPTED AS E 1/4 CORNER OF SEC 1, T6N, R13W, SBM PER TRACT 37638 MB 1133 PG 36-40.

FOUND SPIKE & WASHER MARKED "LS 5000"

COUNTY ENGINEER
T6N
R13W
SEC 1
RE 11316

FOUND BRASS CAP MARKED AS SHOWN, DOWN 0.89' IN MONUMENT WELL, ACCEPTED AS S 1/4 COR OF SEC 1, T6N, R13W, SBM PER PWFB 3422 PG 568C-568D.

FOUND BRASS CAP MARKED AS SHOWN, DOWN 1.8' IN MONUMENT WELL, ACCEPTED AS THE SE COR SEC 1, T6N, R13W, SBM PER PWFB 3422 PG 654A

COUNTY SURVEYOR
T6N
R13W
RE 329

10,496.85' (GRID)
MULTIPLY BY 1.00020082
FOR GROUND
N68°39'42"E

34,003.23' (GRID)
MULTIPLY BY 1.00020082
FOR GROUND
N69°12'11"E

QHTP

LINE

NOTE:

THE BASIS OF BEARINGS FOR THIS SURVEY IS THE CALIFORNIA COORDINATE SYSTEM, ZONE 5, NAD83 (EPOCH 2004.0) AS DETERMINED LOCALLY BY A LINE BETWEEN CONTINUOUS GLOBAL POSITIONING STATIONS (CGPS) AND/OR CONTINUOUS OPERATING REFERENCE STATIONS (CORS) QHTP & LINJ BEING N69-12-11E AS DERIVED FROM GEODETIC VALUES PUBLISHED BY THE CALIFORNIA SPATIAL REFERENCE CENTER (CSRC). ALL MEASUREMENTS SHOWN HEREON ARE GROUND U.S. SURVEY FEET UNLESS OTHERWISE NOTED.

LEGEND

- INDICATES THE BOUNDARY OF THE LAND BEING SUBDIVIDED BY THIS MAP
- M — MEASURED
- R — RECORD DATA PER TRACT NO. 37638 MAP BOOK 1133 PAGES 36-40
- 2 3/8" IRON PIPE TO BE SET
- △ SPIKE AND WASHER TO BE SET
- MONUMENT FOUND AS NOTED.
- ▲ CONTINUOUSLY OPERATING REFERENCE STATION (CORS)