

**Cultural Resources Survey for the
Commons at Quartz Hill Project in Lancaster,
Los Angeles County, California**

Jay B. Lloyd

Prepared By



Applied EarthWorks, Inc.
5090 N. Fruit Avenue, Suite 101
Fresno, California 93711

Submitted To

Christopher A. Joseph and Associates
30851 Agoura Road, Suite 210
Agoura Hills, California 91301

August 2007
draft

Lancaster West 7.5-min. quad.
36 acres
No resources identified

MANAGEMENT SUMMARY

At the request of Christopher A. Joseph and Associates and in accordance with the California Environmental Quality Act, Applied EarthWorks, Inc. (Æ) performed a cultural resources study for the proposed Commons at Quartz Hill Project in the western portion of the City of Lancaster in northern Los Angeles County. The project encompasses approximately 36 acres and will involve creating a commercial development that requires a General Plan amendment and a zone change.

Prefield background research revealed that three previous archaeological investigations have been conducted within the project area. No archaeological sites or paleontological resources have been identified within the project area during those studies. Æ archaeologists completed a pedestrian survey of the project area in July 2007. No archaeological sites or isolated artifacts were identified during the survey.

Field notes, maps, and a complete set of photographs from the current investigation are on file at Æ's office in Fresno, California. A copy of the final version of this report will be submitted to the South Central Coastal Information Center of the California Historical Resources Information System at California State University, Fullerton.

CONTENTS

1	INTRODUCTION	1
2	BACKGROUND	5
2.1	REGIONAL ENVIRONMENT.....	5
2.2	PREHISTORY AND ARCHAEOLOGY.....	7
2.2.1	Paleoindian Period (prior to 10,000 B.P.).....	7
2.2.2	Lake Mojave Period (10,000–7000 B.P.).....	7
2.2.3	Pinto Period (7000–4000 B.P.).....	7
2.2.4	Gypsum Period (4000–1500 B.P.).....	8
2.2.5	Rose Spring/Saratoga Springs Period (1500–800 B.P.).....	8
2.2.6	Late Prehistoric Period (800–300 B.P.).....	8
2.2.7	Ethnographic Period (300 B.P to present).....	9
2.3	HISTORY.....	10
3	METHODS	11
3.1	RECORDS SEARCH.....	11
3.2	NATIVE AMERICAN CONSULTATION.....	11
3.3	FIELD SURVEY.....	11
4	FINDINGS	13
4.1	RECORDS SEARCH.....	13
4.2	NATIVE AMERICAN CONSULTATION.....	13
4.3	FIELD SURVEY.....	14
5	RESULTS AND RECOMMENDATIONS	17
5.1	SUMMARY OF FINDINGS.....	17
5.2	DEFINITION OF IMPACTS.....	17
5.3	PROJECT IMPACTS AND MITIGATION MEASURES.....	18
5.3.1	Impact CR-1: Exposure of Previously Unidentified Cultural Resources.....	18
5.3.2	Mitigation Measure CR-1.....	18
5.3.3	Significance after Mitigation.....	18
6	REFERENCES	19

APPENDICES

- A** Qualifications of Key Personnel
- B** Records Search Results
- C** Native American Consultation

FIGURES

1-1 The Commons at Quartz Hill project area, view to the north1
1-2 Project location in Los Angeles County, California2
1-3 Survey location at intersection of 60th Street and Avenue L3

4-1 Commons at Quartz Hill overview, view to the west14
4-2 Concrete foundation in survey area, view to the south15

TABLES

4-1 Known Cultural Resources Investigations Within the Project Area.....13

1 INTRODUCTION

An Environmental Impact Report (EIR) is being prepared for a commercial development in the City of Lancaster. The development includes two anchor stores and up to 10 smaller buildings that would house food, commercial, and service uses. The project requires a General Plan amendment to change the area's designation to Commercial and a zone change to Commercial Planned Development.

On behalf of Christopher A. Joseph and Associates, Applied EarthWorks, Inc. (Æ) performed a cultural resources survey for the proposed development. The project area is within the boundaries of the city of Lancaster in northern Los Angeles County (Figures 1-1 and 1-2). The approximately 36-acre survey area lies in Township 7 North, Range 13 West, Section 27 as shown on the Lancaster West, California, 7.5-minute U.S. Geological Survey (USGS) topographic quadrangle (Figure 1-3). The survey parcel lies on the northwest corner of the intersection of 60th Street West and Avenue L.



Figure 1-1 The Commons at Quartz Hill project area, view to the north.

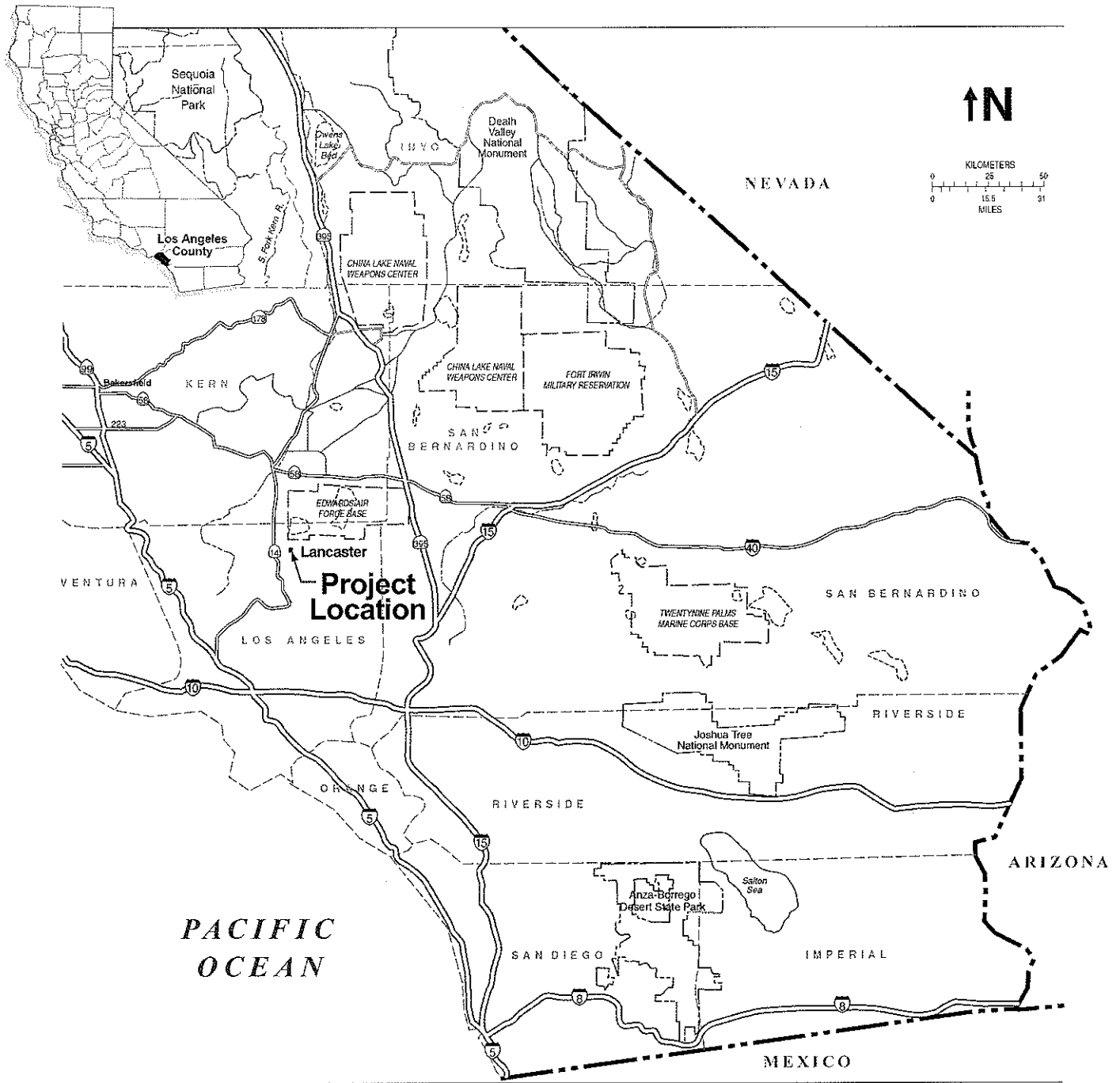
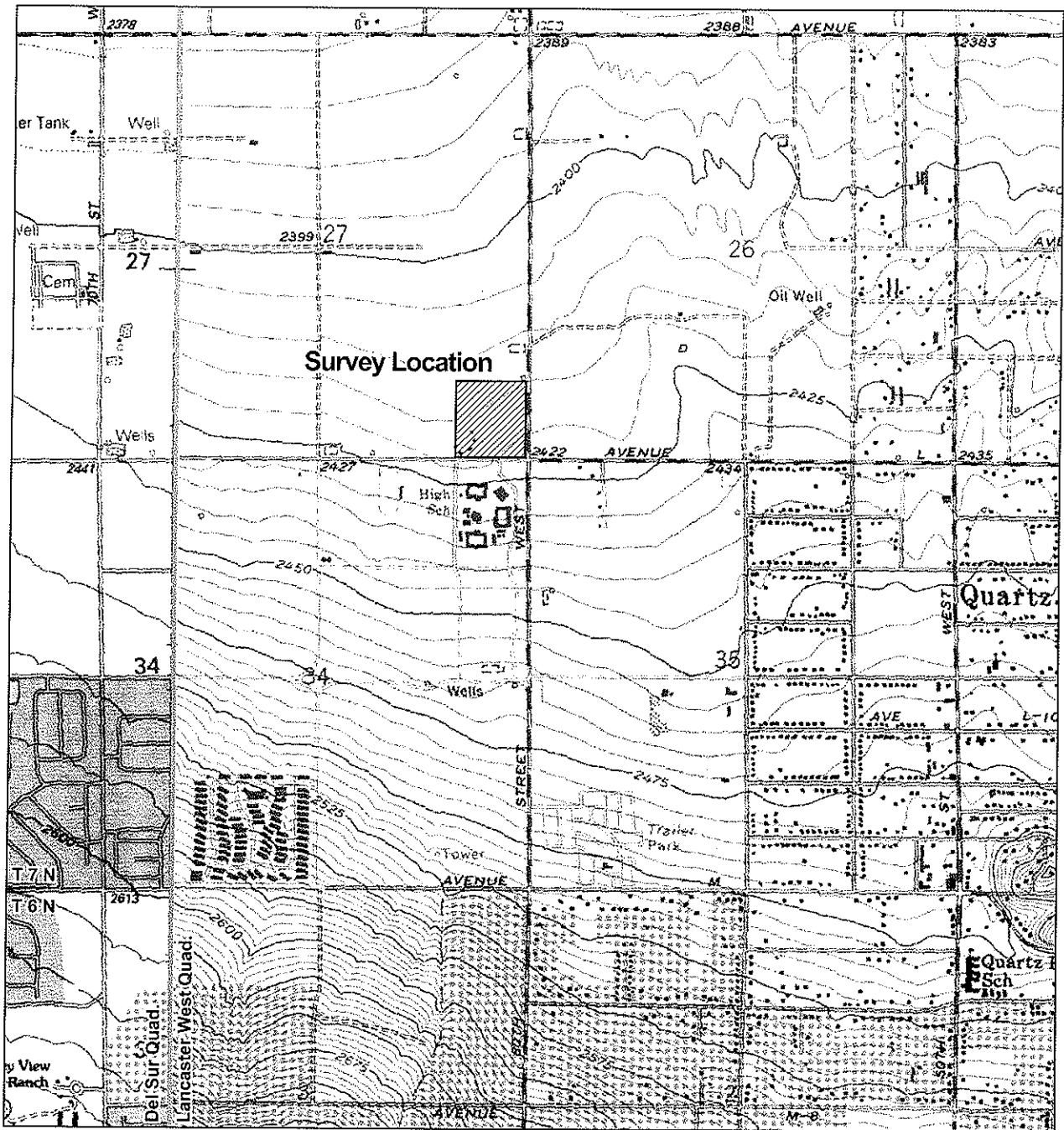


Figure 1-2 Project location in Los Angeles County, California.



Confidential: Not for Public Distribution

Prepared by Applied EarthWorks, Inc.

U.S.G.S. 7.5 Minute
 Topographic Quadrangle
Del Sur and Lancaster West, CA
 T 7 N - R 13 W
 1958, Photorevised 1974
 Del Sur 1995

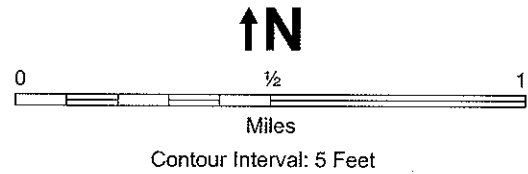


Figure 1-3 Survey location at the intersection of 60th Street and Avenue L.

Preparation and approval of the EIR is subject to the California Environmental Quality Act (CEQA), which mandates that state, county, and municipal agencies consider the impacts of their projects on the biological and cultural environment (California Public Resources Code Sections 21100 et seq.). The archaeological work documented in the report was carried out in accordance with state regulations and the report has been prepared in accordance with California Office of Historic Preservation standards outlined in *Archaeological Resource Management Reports (ARMR): Recommended Contents and Format*.

Jay Lloyd served as Æ's project manager for these cultural studies, supervised the archaeological survey, and prepared the technical report. His résumé is provided in Appendix A. Mark Kile participated as a field technician.

2 BACKGROUND

This chapter describes the prehistoric and ethnographic cultural setting of the project area. Both prehistorically and ethnographically, the nature and distribution of human activities in the region have been affected by such factors as topography and the availability of water and biological resources. Therefore, prior to a discussion of the cultural setting, the environmental setting of the project area is summarized below.

2.1 REGIONAL ENVIRONMENT

The project area lies along the western edge of Antelope Valley in the western Mojave Desert. Antelope Valley is a triangular valley bordered on the south by the San Gabriel Mountains, on the southwest by the Sierra Pelona Range, and on the northwest the Tehachapi Mountains. Rogers Lake is north of the project area and Highway 395 is to the east. Elevations in the region range from 8,214 feet above sea level at the crest of the San Gabriel Mountains to 2,270 feet above sea level at the valley floor. The project area lies at 2,415–2420 feet above sea level.

The western Mojave Desert is hydrated by a playa system consisting of three primary lakebeds—Rosamond, Rogers, and Buckhorn—surrounded by a number of smaller playas. The three larger playas lie within Edwards Air Force Base. Rogers Lake is the largest, covering approximately 46 square miles. Rosamond Lake covers approximately 21 square miles and Buckhorn approximately 2.5 square miles. Today these lakebeds are usually dry, only occasionally covered in water following large winter storms. During the late Holocene, the Antelope Valley was a closed basin, and all run-off from the surrounding mountains flowed into the lakebed complex. The project area lies just west of Amargosa Creek, one of the major drainages flowing from the Sierra Pelona Mountains. Other water sources in the project vicinity include Big Rock Creek and Little Rock Creek, which drain the San Gabriel Mountains; Cottonwood Creek and Los Alamos Creek from the Tehachapi Mountains; and an unnamed drainage originating near the town of Mojave that flows through the Bissell Hills east of Rogers Lake and forms the major fan on its western shore. Additionally, numerous springs occur in the region. The closest one is the now dry Lovejoy Springs, which watered a small valley nestled within Lovejoy Buttes east of the project area. The larger drainages and springs were likely a major factor in site location throughout the desert region.

Geologically, the western Mojave Desert is bounded to the north and south by the Garlock and San Andreas faults, respectively. A series of buttes lie within this bounded zone. These buttes—Alpine, Black, Saddleback, Piute, and Lovejoy—are igneous remnants of once higher hills that have been reduced by erosion or buried by debris (Norris and Webb 1990:223). They are composed of granitic rocks like coarse quartz monsonite, red rhyolite, sandstone, tuff, limestone, and basalt. Lovejoy Buttes, in particular, contains muscovite and biotite granite, and small amounts of biotite quartz monsonite (Leighton and Cotton 1967). Much of the valley floor consists of unconsolidated quaternary alluvium composed of silts, sands, poorly developed soils, and gravels (Dibblee 1967).

During prehistoric times, native populations sought rhyolites; fine-grained silicates such as jasper, chert, chalcedony, and quartzite; basalt; granite; and schist for the manufacture of flaked and ground stone tools. Good quality rhyolite is available at the Fairmont Buttes in the western Antelope Valley (Sutton 1982) and Rosamond Hills (Noble 1954; Wright and Troxel 1954). Fine-grained silicates also occur locally on the eastern edge of the valley, while basalt is present in the Rosamond Hills. Abundant schist and steatite deposits occur in the Sierra Pelona Mountains west of Palmdale. Other materials commonly used by native populations in Antelope Valley, such as obsidian and fused shale, are not local to the area but were available through trade or direct procurement.

Antelope Valley is often referred to as the "high desert" due to the elevations of the playas at 2,270 feet and the surrounding foothills between 3,000 and 4,000 feet. As a high desert in the rain shadow of the steep San Gabriel Mountains, it is secluded from the moderating effects of marine air and experiences wide diurnal and seasonal temperature variations. Daytime high temperatures average between 56°F in the winter and a 98°F in the summer. Winter nights often drop below freezing and occasionally it snows. Typical of a California Mediterranean climate, rain falls in the winter, while summers are long and dry. Rainfall is low, from 5 to 9 inches annually, with the southern foothills receiving more precipitation than the drier, lower plains.

As Sutton (1988) explains, during the late Pleistocene the valley contained several springs, seeps, and marshy areas supporting herds of horses, camels, and mammoths. As the glaciers retreated between 12,000 and 10,000 years ago, the climate became warmer and drier; vegetation communities shifted to higher elevations, and the animals moved with them. The lake levels fluctuated widely during the early Holocene, and the modern plant and animal communities of the Antelope Valley did not become established until after 4300 B.P. Based on studies of pollen and pack rat middens, it is believed that desert vegetation began replacing the low-elevation woodlands of the Mojave Desert between 12,000 and 8,000 years ago (Mehring 1967; Parker 2002; Van Devender and Spaulding 1979).

Vegetation in the Antelope Valley consists primarily of saltbrush scrub, creosote bush scrub, and Joshua tree woodland plant communities. The saltbrush scrub community, adapted to high salinity, occurs near the shorelines of the dry lakebeds. The creosote bush scrub is found on the valley floor above the immediate confines of the playas, and the Joshua tree woodland community is found in the higher elevations on gentle slopes. These communities produce plant species such as beavertail cactus, chia, buckwheat, creosote bush, rabbitbush, sagebrush, Mormon tea, saltbush, Joshua trees, mesquite, and junipers. Various plants were used for foods and medicines by Native American people in prehistoric times, and many species provided materials for weaponry, baskets, cordage, digging sticks, shelter, and fuel. These plant communities also provided habitat for various birds, insects, and reptiles. Mammals that may have been hunted by Native American groups include small rodents (e.g., kangaroo rats, wood rats, and ground squirrels), black-tailed hare and jackrabbit, cottontail, coyote, spotted skunk, kit fox, bobcat, and mule deer, although their numbers have declined in modern times (Parker 2002). Pronghorn, bighorn sheep, and black bear are presumed to have existed in the region (see Graves 1930; Sutton 1988) and were likely hunted by the native population as well.

2.2 PREHISTORY AND ARCHAEOLOGY

Although archaeologists first took interest in the western Mojave Desert in the 1930s, little systematic research was done in the region prior to the 1960s. Efforts since the 1960s have led to a prehistoric cultural chronology that can be divided into seven periods distinguished by paleoclimatic variations and differences in adaptive strategies (Warren 1984).

2.2.1 Paleoindian Period (prior to 10,000 B.P.)

The earliest archaeological evidence of cultural activity in the western Mojave Desert occurs during the terminal Pleistocene, a period marked by rising temperature and precipitation and unstable climate. Although evidence of a Paleoindian occupation in the region is sparse, marked by a single Clovis point recovered from the foothills of the Tehachapi Mountains (Glennan 1971), the valley was likely an ideal place for the exploitation of late Pleistocene megafauna. Recent research at Searles Lake basin in the eastern Mojave Desert has identified geoglyphs and artifact concentrations dating back 11,000 years (Barna 2004). Archaeologists hypothesize that the earliest occupants of the region led a foraging lifestyle focused around lakeshore or wetland environments (Davis 1978; Moratto 1984). Population density was presumable quite low. The tool kit included large lanceolate and fluted points (e.g., Clovis or Folsom) for hunting game, as well as crescents, graters, scrapers, choppers, perforators, and numerous small formalized and informal flake tools (Davis 1978). Ground stone implements were rare, indicating that processed seeds or nuts did not play a significant dietary role.

2.2.2 Lake Mojave Period (10,000–7000 B.P.)

Most of the early material identified within the valley dates to the Lake Mojave Period when the climate was much drier than the preceding period with intermittent moist episodes. Numerous sites dating to this period have been found within the southwestern Great Basin and the northern Mojave Desert, suggesting a considerable population increase during this time. Local sites from this interval include CA-KER-322, on the northwestern fringe of Rogers Lake (Peak 1974, 1976; Sutton 1979), and CA-KER-760, northeast of Rogers Lake (Robinson, personal communication 1980 in Sutton 1988). Lake Mojave artifacts include large percussion-flaked foliate and stemmed points and knives (typically Lake Mojave and Silver Lake types), stone crescents, and a wide variety of scrapers, graters, and perforating tools. Ground stone implements continue to be rare. Sutton (1988:30) noted that much of Antelope and Fremont valleys may have been covered by Pleistocene Lake Thompson. Because the relief in the valley is slight, extensive marshlands may have ringed the lake. Such marshes are among the most productive of habitats, and Davis (1978) argued that these wetlands would have attracted early occupants. Thus, it is presumed that the adaptive strategy was one of generalized hunting and gathering focused on the exploitation of wetland resources.

2.2.3 Pinto Period (7000–4000 B.P.)

A generalized hunting and gathering strategy continued into the Pinto Period; however, it underwent marked changes with the onset of greater aridity. Population decreased in response to variable and unstable climatic conditions and a decrease in permanent wetland habitats beginning in the mid-Holocene. This period corresponds to Antevs (1953) Altithermal (i.e., hot and dry), although recent research suggests that in the Antelope Valley this aridity was punctuated by wet

episodes (Grayson 1993; Mehringer 1986). Sites dating to this period tend to be small temporary seasonal camps located near streams and seasonal water sources. They lack developed middens but contain a diverse tool kit consisting of Pinto projectile points, other flaked stone tools, and ground stone milling slabs and handstones. The appearance of milling tools indicates an increased reliance on seeds and nuts from the scrub and chaparral plant communities as wetland resources diminished. Rhyolite, fine-grained basalts, and poorer quality chert and quartz materials tend to dominate the lithic assemblages.

2.2.4 Gypsum Period (4000–1500 B.P.)

The Little Pluvial episode occurs between 5000 and 2000 B.P., marking a period of increased precipitation that intensified every thousand years until circa 1900 B.P. Modern vegetation and climate were well established by 4300 B.P., and mesquite trees, oaks on the valley margins, and piñon were readily available. The mortar and pestle were introduced to process mesquite pods, acorns, pine nuts, yuccas, and agaves. The archaeological record is marked by the appearance of large village sites reflecting a transition from seasonal migration to year-round or semisedentary settlements (Sutton 1988). The presence of coastal marine shell artifacts (e.g., *Olivella* beads) and Coso obsidian indicate that long-distance exchange systems were in place. Milling tools of various types dominate the artifact assemblages; diagnostic flaked stone artifacts include Humboldt, Elko, Gypsum, and Rose Spring projectile points.

2.2.5 Rose Spring/Saratoga Springs Period (1500–800 B.P.)

This period is marked by moderate climatic conditions interrupted by severe drought at 1000–900 B.P. Adaptive strategies remain similar to the Gypsum Period, evinced by large village sites with deep middens reflecting a subsistence strategy focused on hunting and gathering and a continuation of trade networks with coastal and other outside groups (Moratto 1984:423; Sutton 1981:217). The biggest difference from the preceding period is the replacement of the atlatl, or spear thrower, by the bow and arrow. Projectile points diagnostic of this period include Rose Spring and Cottonwood points. Also prevalent are stone beads and schist and steatite ground stone artifacts reflecting the development of a regional stone trade. Schist and steatite stone workshops have been identified at habitation sites along Amargosa Creek west of Palmdale (Earle 2004). The end of the period is marked by a shift away from obsidian importation and an increased use of local cryptocrystallines. Earle (2004) suggests that changes in regional networks of raw material exchange may be associated with a drought episode (circa 850–650 B.P.) and the migration of Numic-speaking populations out of southeastern California.

2.2.6 Late Prehistoric Period (800–300 B.P.)

Adaptive strategies of the Rose Spring/Saratoga Springs Period continued during the Late Prehistoric Period. With the amelioration of climatic conditions and an increase in precipitation circa 600 B.P., despite a severe drought around 500 B.P., population increased and subsistence practices featured more intensive exploitation of a variety of both large and small mammals and some fish. The number of special-purpose sites appears to increase, use of Coso obsidian declines, and coastal trade items, particularly shell, increase. Use of Rose Spring and Cottonwood points continues during this period, while Desert Side-notched types are also introduced. Late period sites in the Antelope Valley are distinguished from other late period sites in the southern Mojave Desert by their general lack of pottery. Moratto (1984) and others argue

that this suggests that the southwestern Hakataya influence so prevalent along the Mojave River valley was relatively minor in Antelope Valley because trade between the coast was well established. Interestingly, however, a surprising number of ceramic sherds have been found at CA-LAN-192 and other sites in the buttes (Earle 2004). Additional study of these sherds is necessary to determine their type. As Earle (2004) points out, their presence, along with the numerous shell beads, may reflect the existence of a coastal trans-Colorado trade route through the Antelope and the Mojave River valleys. Alternatively, the pottery may be of Numic origin, suggesting affiliation with Numic speaking groups.

2.2.7 Ethnographic Period (300 B.P to present)

The western Mojave Desert was occupied by at least five groups of Shoshonean speakers at the time of first contact with Europeans: four from the Takic family of Shoshonean speakers and one from the Numic family. These include the Kawaiisu, Numic speakers who lived in Tehachapi Valley and throughout the southern Sierra Nevada in the vicinity of Lake Isabella and Walker Pass; the Tataviam (Takic), who occupied the Santa Clarita Valley, with territory that extended north to the southwestern edge of Antelope Valley; the Kitanemuk (Takic), who resided south of the Kawaiisu and north of the Tataviam on the northwestern edge of the west end of Antelope Valley; the Serrano (Takic), of the foothills of the San Gabriel Mountains, and their valley floor neighbors the Vanyume Serrano, who resided along the Mojave River in the Victorville region and in the southern and southwestern portions of Antelope Valley; and the Haminat people of the present-day Lancaster and Palmdale region (Antelope Valley Indian Museum [AVIM] n.d.; Padon and Love 2004). It is suggested that three of the groups, the Kitanemuk, Kaminat, and Vanyume Serrano, spoke a closely related language that may have been a dialect of the same language spoken by the mountain-dwelling Serrano (AVIM n.d.).

The limited ethnographic information provides few specifics about the daily life of each group. Bean and Smith (1978) offer some information about the Vanyume and Serrano, while Blackburn and Bean (1978) present background on the Kitanemuk; however, overall little is known about the ethnographic period in Antelope Valley. In general, the native occupants lived in large permanent winter villages and dispersed into smaller mobile gathering groups during the late spring, summer, and fall months to harvest piñon nuts, mesquite, yucca, buckwheat, chia, berries, and other seasonally available foods. The villages were exogamous and marriage was patrilocal. Each village was ruled by a headman whose position was inherited from his father. The villages appeared to be politically independent, despite marital ties with other villages.

The groups maintained friendly relations with one another; intermarriages, for example among the Vanyume and Serrano, allowed for trade in food and raw materials. The Kawaiisu lived amicably with their southern neighbors, the Kitanemuk, and are known to have participated in cooperative antelope drives with the Yokuts of the San Joaquin Valley (AVIM n.d.). Although most of the groups shared similar cultural traits and practices, there were some differences. For example, the Kitanemuk buried their dead while the Serrano typically cremated their deceased; however, many of the groups shared in the practice of burning possessions of the dead as offerings (AVIM n.d.).

With the development of the Franciscan mission system, numerous Serrano people were relocated to the missions between 1800 and 1820. Earle (AVIM n.d.) suggests that small Numic-

speaking groups of Chemehuevi-Southern Paiute affiliation migrated into the western Mojave Desert from the east and settled across the valley and the San Gabriel Mountains from the 1840s to as late as 1890.

2.3 HISTORY

The first Europeans to enter Antelope Valley were Spanish soldiers and missionaries exploring the interior of Alta California in the 1770s. In 1772, Captain Pedro Fages passed through the valley while searching for mission deserters; his expedition took him through Tejon Pass and ultimately into the San Joaquin Valley. Four years later, Father Francisco Garces traveled through Antelope Valley along the Mojave Indian Trail. California Historic Monument No. 130 in Rosamond marks the location where the Franciscan friar stopped at Willow Springs (Tipton 1988). Trappers such as Jedediah Smith and Kit Carson journeyed through Antelope Valley in the 1820s and were followed by John Fremont, who explored the region in 1844 (Palmdale City Library 2004).

California's accession to the Union in 1850 led to several infrastructural developments in the region. Established in 1848, Fort Tejon protected an important point along the north-south wagon route and warded off Indian attacks in the area. Willow Springs became a stage stop in 1860 (Tipton 1988), and a telegraph line connecting San Francisco and Los Angeles was strung through the Mojave Desert that same year (County of Los Angeles Public Library 2000). Nevertheless, Antelope Valley remained largely undeveloped. It was not until 1876, when the Southern Pacific Railroad completed its line through the valley and stations were established at Lancaster, Alpine (Palmdale), and Acton, that more permanent settlements took hold (Palmdale City Library 2004). Like most of California, the supply of water has been the limiting factor for growth in the Mojave Desert region.

3 METHODS

3.1 RECORDS SEARCH

The staff at the South Central Coastal Information Center of the California Historical Resources Information System at California State University, Fullerton performed a records search on 18 July 2007. The records search covered a study area encompassing the 36-acre survey area and a 1-mile buffer zone. The study area is larger than the survey area to ensure that all potential project locations would be included in the records search. The records search was conducted to identify previous archaeological investigations and previously recorded prehistoric and historical sites and features within the study area. This was accomplished by reviewing the information center's files and base maps, as well as listings on the National Register of Historic Places, the California Points of Historical Interest, the California Historical Landmarks, the California Register of Historical Resources, and the California State Historic Resources Inventory. Detailed results of the records search are included as Appendix B.

3.2 NATIVE AMERICAN CONSULTATION

Æ contacted the Native American Heritage Commission (NAHC) in June 2007 to request a current list of local contacts and a review of the sacred lands file at the NAHC. The NAHC provided contact information for eight local Native American representatives. In July 2007, Æ submitted a letter to each contact with details about the project to solicit information and provide an opportunity for expression of interest or concern regarding the project. A follow-up telephone call was made to each of the contacts. Correspondence with the NAHC and the local representatives is provided in Appendix C.

3.3 FIELD SURVEY

Æ completed an intensive pedestrian survey of the 36-acre project area on 30 July 2007. The survey was accomplished by a single archaeologist walking parallel and meandering transects spaced 5-10 meters apart. Survey of the project area was guided by a copy of the USGS Lancaster West 7.5-minute topographic quadrangle and project maps depicting the study area.

The parcel was photographed using a Nikon Coolpix 880 digital camera. Photo records and digital photos are on file at Æ's office in Fresno, California.

4 FINDINGS

4.1 RECORDS SEARCH

The records search revealed that 28 previous archaeological investigations have been documented within or adjacent to the 1-mile radius study area with the earliest occurring in 1976 and the most recent in 2007. Three studies have been conducted within or adjacent to the 36-acre project area (Table 4-1). One report documents a survey and assessed impacts of development on four properties (Singer and Atwood 1989). Another report documented an archaeological survey conducted in support of Southern California Edison's Antelope-Bailey Reconductoring Project (Jordan 2007). The third study is the cultural resources technical report for the City of Lancaster General Plan update (Tang et al. 2006). Bibliographical information for the reports of previous studies conducted within the entire study area are provided in Appendix D.

**Table 4-1
Known Cultural Resources Investigations Within the Project Area**

Information Center Report No.	Type of Investigation	Reference
LA1919	Archaeological survey of four properties	Singer and Atwood 1989
LA7991	City of Lancaster General Plan update	Tang et al. 2006
LA8168	Archaeological survey for utility reconductoring	Jordan 2007

Five archaeological sites and three isolated artifacts were identified within the 1-mile radius study area during the records search. None of the sites or isolates are located within the Lane Ranch project area.

4.2 NATIVE AMERICAN CONSULTATION

As noted, Æ contacted the NAHC for a review of their sacred lands file on 11 June 2007. No sacred lands or other Native American cultural resources are listed with the NAHC for the project area (Appendix C).

On 6 July 2007, Æ submitted letters detailing the project and requesting comments to the following eight local tribal contacts: Charles Cooke; Beverly Salazar Folkes; Henry Duro, Chairperson of the San Manuel Band of Mission Indians; Randy Guzman-Folkes, Director, Cultural and Environmental Department of the Fernandeno Tataviam Band of Mission Indians; Ron Andrade, Director of the Los Angeles City/County Native American Indian Commission; Delia Dominguez of the Kitanemuk and Yowlumne Tejon Indians; John Valenzuela, Chairperson of the San Fernando Band of Mission Indians; and Robert Robinson, Historic Preservation Officer for the Kern Valley Indian Council. Follow-up telephone calls were

placed on 20 July 2007. To date, none of the contacts has expressed any concerns regarding the project.

4.3 FIELD SURVEY

The project area is located along the western edge of the Antelope Valley in the western Mojave Desert within the city of Lancaster. The project vicinity consists of recent residential developments to the north, west, and east. A high school is located across the street to the south. The surveyed area consists of an open field surrounded by a chain-link fence. No standing structures are present within the survey area (Figure 4-1). One concrete foundation and presumably associated historic and modern debris were observed during the survey (Figure 4-2). However, there were no indications that the foundation was more than 50 years old and the refuse scatter consisted of mixed historic and modern debris. Therefore, neither the foundation nor the trash scatter was recorded.



Figure 4-1 Commons at Quartz Hill overview, view to the west.

Surface visibility averaged between 50 and 75 percent and was partially obscured by some patches of dense vegetation. Survey coverage was 100 percent and no evidence of prehistoric or historical archaeological sites, historical buildings or structures, or other cultural resources were encountered within the project boundaries.



Figure 4-2 Concrete foundation in survey area, view to the south.

RESULTS AND RECOMMENDATIONS

5.1 SUMMARY OF FINDINGS

At the request of Christopher A. Joseph and Associates, Applied EarthWorks, Inc. performed a cultural resources study for the proposed Commons at Quartz Hill Project in the city of Lancaster in northern Los Angeles County.

The results of the records search showed that three previous cultural resources investigations have been conducted within the project boundaries. An additional 25 investigations have been conducted within 1 mile of the project area. No cultural resources were identified within the project area as a result of the records search.

A search of the NAHC sacred lands file failed to indicate the presence of Native American cultural resources within the immediate project area. To date, no responses have been received and no concerns have been expressed by the Native American representatives contacted.

No prehistoric or historical archaeological sites were identified during the field survey.

5.2 DEFINITION OF IMPACTS

The CEQA requires consideration of project impacts on archaeological or historical sites deemed to be historical resources. If the project will cause a substantial adverse change in the characteristics of a resource that convey its significance or justify its eligibility for inclusion in the California Register, or a local register, either through demolition, destruction, relocation, alteration, or other means, then the project is judged to have a significant effect on the environment according to the CEQA guidelines (Title 14, California Code of Regulations [CCR], Chapter 3).

Historical resources are places or objects that are important for scientific, historical, and religious reasons to cultures, communities, groups, or individuals. Historical resources may include archaeological sites, architectural remains, and other artifacts that provide evidence of past human activity. Historical resources can also include places of importance in the traditions of a society. To determine impacts to historical resources, it is necessary to assess the significance of resources and the effects of the project on their significance. The significance of resources in the project area is based on their importance to scientific-historic research, their importance to Native Americans, and their educational and community value for the general public.

Section 15064.5 of the CEQA guidelines pertains to the determination of the significance of impacts to archaeological and historic resources. Direct impacts can be assessed by identifying the types and locations of proposed development, determining the exact locations of cultural resources within the project area, assessing the significance of the resources that may be affected, and determining the appropriate mitigation.

Direct impacts may occur by:

- Physically damaging, destroying, or altering all or part of the resource;
- Altering characteristics of the surrounding environment that contribute to the resource's significance;
- Neglecting the resource to the extent that it deteriorates or is destroyed; or
- The incidental discovery of cultural resources without proper notification.

Indirect impacts primarily result from the effects of project-induced population growth. Such growth can result in increased construction as well as increased recreational activities that can disturb or destroy cultural resources. Due to their nature, indirect impacts are much harder to assess and quantify.

5.3 PROJECT IMPACTS AND MITIGATION MEASURES

The CEQA guidelines for mitigating impacts to archaeological resources are provided in 14 CCR 15126.4. Achieving CEQA compliance with regard to treatment of impacts to significant cultural resources requires that a mitigation plan be developed for the resource. Preservation in place is the preferred manner of mitigating impacts to significant archaeological resources. Considering that no surface-visible cultural resources were identified during the survey, the following impact was determined to be salient to the Lane Ranch Project.

5.3.1 Impact CR-1: Exposure of Previously Unidentified Cultural Resources

It is possible that buried or concealed archaeological sites, features, or other cultural properties eligible for listing in the California Register could be present within the area designated for development and could become exposed during the course of construction or other project-related activities. Such sites or features might include aboriginal middens or artifact scatters, remnants of aboriginal houses, fire hearths, human burials and cemeteries, and historical dumps and trash deposits. Disturbance of such features is considered a *significant but mitigable* impact.

5.3.2 Mitigation Measure CR-1

All contractors and subcontractors shall be informed about the potential for archaeological discoveries during construction, and all construction personnel should be informed on the appropriate responses to such discoveries. The information will include a description of the kinds of cultural resources that might be encountered during construction and the steps to be taken if such a find is unearthed.

If buried or concealed cultural resources are discovered during excavation, construction, or related development work, all such work is to cease in the vicinity of the find and a qualified archaeologist shall be notified. The find shall be properly investigated and appropriate mitigative and/or protective measures (if necessary) shall be taken. If human remains are found, procedures for their treatment shall follow CEQA guidelines in 14 CCR 15064.5(e).

5.3.3 Significance after Mitigation

Impacts would be reduced to less than significant with implementation of these mitigation measures.

6

REFERENCES

Antelope Valley Indian Museum (AVIM)

- n.d. Antelope Valley Indian Peoples, <http://www.avim.parks.ca.gov/people/>. Antelope Valley Indian Museum Web site, accessed 1 August 2007.

Antevs, E.

- 1953 The Postpluvial or Neothermal. *University of California Archaeological Survey Reports* 22:9–23.

Barna, Mark

- 2004 Unearthing New Perspective. *Bakersfield Californian*, 2 February.

Bean, Lowell John, and Charles R. Smith

- 1978 Serrano. In *California*, edited by Robert F. Heizer, pp. 570–574. *Handbook of North American Indians*, vol. 8, William C. Sturtevant, general editor. Smithsonian Institution, Washington, D.C.

Blackburn, Thomas C., and Lowell John Bean

- 1978 Kitanemuk. In *California*, edited by Robert F. Heizer, pp. 564–569. *Handbook of North American Indians*, vol. 8, William C. Sturtevant, general editor. Smithsonian Institution, Washington, D.C.

County of Los Angeles Public Library

- 2000 Antelope Valley Community History, <http://www.colapublib.org/history/antelopevalley/>. County of Los Angeles Public Library Web site, accessed 14 January 2005.

Davis, E. L. (editor)

- 1978 *The Ancient Californians: Rancholabrean Hunters of the Mojave Lakes Country*. Natural History Museum of Los Angeles County Science Series 29.

Dibblee, T. W.

- 1967 *A Real Geology of the Western Mojave Desert, California*. United States Geological Survey Professional Paper 522.

Earle, David

- 2004 Important Research Issues in the Study of the Prehistory of the Lovejoy Springs-Piute Butte Region, Los Angeles County. Manuscript in possession of the author.

Glennan, William S.

- 1971 Concave-Based Lanceolate Fluted Projectile Points from California. *Masterkey* 45(1):27–32.

Graves, Jackson A.

1930 *California Memories*. Times-Mirror Press, Los Angeles.

Grayson, D. K.

1993 *The Desert's Past: A Natural Prehistory of the Great Basin*. Smithsonian Institution, Washington, D.C.

Jordan, Stacey C.

2007 *Archaeological Survey Report for Southern California Edison Company, Antelope-Bailey Reconductoring Project, Los Angeles County, California*. Jones & Stokes. On file, California Historical Resources Information System, South Central Coastal Information Center, California State University, Fullerton.

Leighton, F. Beach, and W. R. Cotton

1967 *Geologic Aspects of Tentative Tract 28358, Lovejoy Buttes and Lovejoy Springs, California*. Leighton and Associates, Geotechnical and Environmental Engineering Consultants.

Mehring, P. J., Jr.

1967 Pollen Analysis of the Tule Springs Site, Nevada. In *Pleistocene Studies in Southern Nevada*, edited by H. M. Wormington and D. Ellis, pp. 130–200. Nevada State Museum Anthropological Papers 13.

1986 Prehistoric Environments. In *Great Basin*, edited by Warren L. d'Azevedo, pp. 31–50. Handbook of North American Indians, vol. 11, William C. Sturtevant, general editor. Smithsonian Institution, Washington, D.C.

Moratto, Michael

1984 *California Archaeology*. Academic Press, Orlando.

Noble, J. A.

1954 Geology of the Rosamond Hills, Kern County. In *Geology of Southern California*, edited by R. H. Jahns, Map Sheet 14. California State Division of Mines Bulletin 170.

Norris, Robert M., and Robert W. Webb

1990 *Geology of California*. 2nd ed. John Wiley and Sons, New York.

Palmdale City Library

2004 Antelope Valley History, <http://www.palmdalelibrary.org/history/part1.shtml>. Palmdale City Library Web site, accessed 14 January 2005.

Parker, C.

2002 *Phase II Evaluation for 20 Sites at Edwards AFB, Kern, Los Angeles, and San Bernardino Counties*. 3 vols. Computer Sciences Corporation, Edwards Air Force Base, California. Submitted to Air Force Flight Test Center, Base Historic Preservation Office, Edwards Air Force Base, California, Contract No. F04611-92-C-0045.

Peak, Ann S.

- 1974 *Preliminary Report on the Test Excavation of Archaeological Site CA-KER-322, Kern County*. On file, California Historical Resources Information System, Southern San Joaquin Valley Information Center, California State University, Bakersfield.
- 1976 *Final Report on the Test Excavations of Archaeological Site CA-KER-322, Kern County*. On file, California Historical Resources Information System, Southern San Joaquin Valley Information Center, California State University, Bakersfield.

Singer, Clay A., and John E. Atwood

- 1989 *Cultural Resources Survey and Impact Assessment for Four Properties Near Lancaster (GPA Group 1), Los Angeles County, California*. Singer & Associates, Inc. On file, California Historical Resources Information System, South Central Coastal Information Center, California State University, Fullerton.

Sutton, Mark Q.

- 1979 *Archaeological Investigations at KER-323 and KER-322, Edwards A.F.B., California*. On file, California Historical Resources Information System, Southern San Joaquin Valley Information Center, California State University, Bakersfield.
- 1981 *Archaeology of the Antelope Valley, Western Mojave Desert, California*. Manuscript in possession of the author.
- 1982 *Archaeology of the Fairmont Buttes*. *Pacific Coast Archaeological Society Quarterly* 18(4):1-26.
- 1988 *An Introduction to the Archaeology of the Western Mojave Desert, California*. Archives of California Prehistory Number 14. Coyote Press, Salinas, California.

Tang, Bai "Tom," Michael Hogan, and Josh Smallwood

- 2006 *Cultural Resources Technical Report, City of Lancaster General Plan Update*. CRM Tech. On file, California Historical Resources Information System, South Central Coastal Information Center, California State University, Fullerton.

Tipton, Karla

- 1988 *Willow Springs: An Oasis in Antelope Valley History*, <http://www.goldledge.com/history/docs.html>. *Antelope Valley Press*, 25 May. Gold Ledge Web site, accessed 14 January 2005.

Van Devender, T. R., and W. G. Spaulding

- 1979 *Development of Vegetation and Climate in the Southwestern United States*. *Science* 204:701-710.

Warren, Claude N.

- 1984 *The Desert Region*. In *California Archaeology*, by Michael J. Moratto, pp. 339-430. Academic Press, Orlando, Florida.

Wright, L. A., and B. W. Troxel

1954 Geological Guide No. 1, Western Mojave Desert and Death Valley Region. In
Geology of Southern California, edited by R. H. Jahns. California State Division of
Mines Bulletin 170.

APPENDIX A

Qualifications of Key Personnel



JAY B. LLOYD, RPA

Expertise

California archaeology, inventory and excavation strategies for historic and prehistoric sites, laboratory processing and cataloging, theoretical phonology, language variation, and diachronic sound shift.

Education

- M.A. Linguistics, University of California, Santa Cruz, 2000.
- B.A. Anthropology, California State University, Fresno, 1998.
- B.A. Linguistics, California State University, Fresno, 1998.

Professional Experience

- 2000– Staff Archaeologist (2001–), Archaeological Technician (2000–2001), Applied EarthWorks, Inc., Fresno, California.
- 2000 Adjunct Faculty Member, Reedley College, Reedley, California.
- 1998–2000 Teaching Assistant, University of California, Santa Cruz, Departments of Anthropology and Linguistics, Santa Cruz, California.
- 1998 Field School Teaching Assistant, California State University, Fresno, Department of Anthropology.
- 1997–1998 Archaeological Technician, Sierra Valley Cultural Planning, Fresno, California.

Technical Qualifications

Mr. Lloyd has served as a field and laboratory supervisor, crew chief, and technician for various archaeological projects throughout California, including the Sierra Nevada and Cascade ranges, Central Valley, and Central Coast region. In this capacity he has participated in survey, extended survey, testing and evaluation, and data recovery projects at both prehistoric and historical sites. Additionally, Mr. Lloyd has authored and contributed to numerous National Historic Preservation Act Section 106 and California Environmental Quality Act compliance documents. He is proficient in laboratory sorting, cataloging, and artifact classification and has particular experience with the typologies of *Olivella* and *Haliotis* beads and ornaments. Since joining Applied EarthWorks, Mr. Lloyd has served as a monitor and Native American coordinator during supplemental survey and tree clearing operations, participated in testing and data recovery excavation, and served as a supervisor during laboratory processing and cataloging for the PGT-PG&E Line 401 Pipeline Expansion Capacity Loops Project in Modoc and Shasta counties. Mr. Lloyd also participated in data recovery and served as lead laboratory technician for the excavation of McNamee Cave, a mortuary cave in Columbia, California, as well as testing and evaluation excavations at the historic Wawona Hotel in Yosemite National Park where he was responsible for the field laboratory and collections management of recovered artifacts. Mr. Lloyd has also participated in various excavation and survey projects on Vandenberg Air Force Base in Santa Barbara County, California.

APPENDIX B

Records Search Results

South Central Coastal Information Center
California Historical Resources Information System
California State University, Fullerton
Department of Anthropology
800 North State College Boulevard
Fullerton, CA 92834-6846
714.278.5395 / FAX 714.278.5542
anthro.fullerton.edu/sccic.html - sccic@fullerton.edu

Ventura
Los Angeles
Orange

July 18, 2007

SCCIC # 7725.4820

Mr. Jay Llyod
Applied Earth Works Inc.
5090 North Fruit Avenue
Suite 101
Fresno, CA 93711
(559) 229-1856

RE: Records Search for Southeast and Northwest Corners of 60th Street West and Avenue L, in the City of Lancaster, California

Dear Mr. Lloyd,

As per your request received on June 18, 2007, a records search was conducted for the above referenced project. The search includes a review of all recorded archaeological sites within a 1-mile radius of the project site as well as a review of cultural resource reports on file. In addition, the California Points of Historical Interest (PHI), the California Historical Landmarks (CHL), the California Register of Historical Resources (CR), the National Register of Historic Places (NR), and the California State Historic Resources Inventory (HRI) listings were reviewed for the above referenced project. The following is a discussion of the findings.

Del Sur and Lancaster West, CA. USGS 7.5' Quadrangles

ARCHAEOLOGICAL RESOURCES:

Five archaeological sites (19-003383, 19-003676, 19-003692, 19-003693, and 19-003694) have been identified within a 1-mile radius of the project site. None of the above archaeological sites are located within the project site. No sites are listed on the Archaeological Determination of Eligibility (DOE) list. Three isolates (19-100315, 19-100317, and 19-100320) have been identified within a 1-mile radius of the project site. None of the above isolates are located within the project site.

HISTORIC RESOURCES:

Copies of our historic maps – Del Sur (1936) 6' USGS, Elizabeth Lake (1941) 30' USGS, and Lancaster (1958) 15' USGS - are enclosed for your review.

The California Point of Historical Interest (2006) of the Office of Historic Preservation, Department of Parks and Recreation, lists no properties within a 1-mile radius of the project site.

The California Historical Landmarks (2006) of the Office of Historic Preservation, Department of Parks and Recreation, lists no properties within a 1-mile radius of the project site.

The California Register of Historic Places (2006) lists no properties within a 1-mile radius of the project site. These are properties determined to have a National Register of Historic Places Status of 1 or 2, a California Historical Landmark numbering 770 and higher, or a Point of Historical Interest listed after 1/1/1998.

The National Register of Historic Places (2006) lists no properties within a 1-mile radius of the project site.

The California Historic Resources Inventory (2006) lists no properties that have been evaluated for historical significance within a 1-mile radius of the project site.

PREVIOUS CULTURAL RESOURCES INVESTIGATIONS:

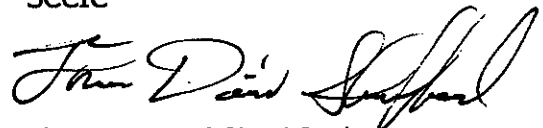
Twenty-eight studies (LA238, LA1737, LA1762, LA1812, LA1919*, LA2063, LA2805, LA4391, LA4904, LA6624, LA6633, LA6636, LA6637, LA7991*, LA8025, LA8162, LA8168*, LA8234, LA8328, LA8344, LA8426, LA8427, LA8441, LA8442, LA8452, LA8455, LA8457, and LA8461) have been conducted within a 1-mile radius of the project site. Of these, three are located within the project site. There are five additional investigations located on the Del Sur and Lancaster West 7.5' USGS Quadrangle that are potentially within a 1-mile radius of the project site. These reports are not mapped due to insufficient locational information.

(* = Located within the project site)

Please forward a copy of any reports from this project to the office as soon as possible. Due to the sensitive nature of archaeological site location data, we ask that you **do not include** records search maps in your report. If you have any questions regarding the results presented herein, contact the office at 714.278.5395 Monday through Thursday 8:00 am to 3:30 pm.

Should you require any additional information for the above referenced project, reference the SCCIC number listed above when making inquiries. Requests made after initial invoicing will result in the preparation of a separate invoice.

Sincerely,
SCCIC



Thomas David Shackford
Lead Staff Researcher

Bibliography: Southeast and Northwest Corners of 60th Street West and Avenue L

IC ID#: LA1737

DATE: 1989

PAGES: 14

AUTHOR: Norwood, Richard H.

FIRM: Cultural Resource Management

TITLE: Cultural Resource Survey for GPA 88-14 Lancaster, California

AREA: 60 ac

SITES: None

QUADNAME: Lancaster West

MEMO:

IC ID#: LA1762

DATE: 1989

PAGES: 15

AUTHOR: Norwood, Richard H.

FIRM: Cultural Resource Management

TITLE: Cultural Resource Survey for GPA 88-38 Lancaster, California

AREA: 19 ac

SITES: None

QUADNAME: Lancaster West

MEMO:

IC ID#: LA1812

DATE: 1988

PAGES: 7

AUTHOR: Robinson, R. W.

FIRM:

TITLE: A Cultural Resources Investigation of 230 Acres Located in the Del Sur Area of the Antelope Valley, City of Lancaster, Los Angeles County

AREA: 230 ac

SITES: None

QUADNAME: Del Sur

MEMO:

Bibliography: Southeast and Northwest Corners of 60th Street West and Avenue L

IC ID#: LA1919

DATE: 1989

PAGES: 14

AUTHOR: Singer, Clay A. and John E. Atwood

FIRM: Singer & Associates, Inc.

TITLE: Cultural Resources Survey and Impact Assessment for Four Properties Near Lancaster (GPA Group 1), Los Angeles County, California.

AREA: 57 ac

SITES: None

QUADNAME: Lancaster West

MEMO:

IC ID#: LA2063

DATE: 1990

PAGES: 16

AUTHOR: Singer, Clay A. and John E. Atwood

FIRM: Singer & Associates

TITLE: Cultural Resources Survey and Impact Assessment for Four Properties in the City of Lancaster, Los Angeles County, California.

AREA: 114 ac

SITES: None

QUADNAME: Del Sur

Lancaster West

MEMO:

IC ID#: LA238

DATE: 1976

PAGES: 13

AUTHOR: Robinson, R. W.

FIRM: Archaeological Impact Services

TITLE: Draft Environmental Impact Report for Zone Change 6118 and Tentative Tracts No. 32940 and 31611 Appendix A

AREA:

SITES: None

QUADNAME: LANCASTER WEST

DEL SUR

MEMO:

Bibliography: Southeast and Northwest Corners of 60th Street West and Avenue L

IC ID#: LA2805

DATE: 1993

PAGES: 21

AUTHOR: NORWOOD, RICHARD H.

FIRM: RT FACTFINDERS

TITLE: Phase I Cultural Resource Investigation for Tentative Tract No's. 49830 and 49831 Lancaster, Los Angeles County, California

AREA: 55 ac

SITES: CA-LAN-2091H, LAN-2099/H

QUADNAME: Lancaster West

MEMO:

IC ID#: LA4391

DATE: 1999

PAGES: 8

AUTHOR: Maki, Mary

FIRM: Conejo Archaeological Consultants

TITLE: Negative Phase I Archaeological Survey and Impact Assessment of 10,250 Linear Feet for the DWP Quartz Hill Basin Project Quartz Hill, Los Angeles County, California

AREA: .25 ac

SITES: None

QUADNAME: Lancaster West

MEMO:

IC ID#: LA4904

DATE: 2000

PAGES: 22

AUTHOR: Love, Bruce

FIRM: CRM Tech

TITLE: Historical/Archaeological Resources Survey Report

AREA: 480

SITES: none

QUADNAME: Los Angeles, Del Sur, Lancaster West

MEMO:

Bibliography: Southeast and Northwest Corners of 60th Street West and Avenue L

IC ID#: LA6624

DATE: 2003

PAGES: 77

AUTHOR: McKenna, Jeanette, R. Charles Ferguson.

FIRM: McKenna et al.

TITLE: A Phase I Cultural Resources Investigation for the Forecast Homes Property (66 Acres) in the City of Lancaster, Los Angeles County, CA

AREA: 66 ac

SITES: None

QUADNAME: Lancaster West

MEMO:

IC ID#: LA6633

DATE: 2003

PAGES: 36

AUTHOR: McKenna, Jeanette A.

FIRM: McKenna et al.

TITLE: Addendum Report: A Phase I Cultural Resources Investigation for the Pacific Lane Company Property (APN 3204-009-011), in the City of Lancaster, Los Angeles County, CA

AREA: 10 ac

SITES: None

QUADNAME: Lancaster West

MEMO: Outside one mile boundary are sites; 19-002091H,19-002099H,19-002885,19-100419,19-10031

IC ID#: LA6636

DATE: 2003

PAGES: 61

AUTHOR: McKenna, Jeanette A.

FIRM: McKenna et al.

TITLE: A Phase I Cultural Resources Investigation for the Pacific Land Company Property (Tract 53642) in the City of Lancaster, Los Angeles County, CA

AREA: 30 ac

SITES: None

QUADNAME: Lancaster West

MEMO:

Bibliography: Southeast and Northwest Corners of 60th Street West and Avenue L

IC ID#: LA6637

DATE: 2003

PAGES: 72

AUTHOR: McKenna, Jeanette A.

FIRM: McKenna et al.

TITLE: A Phase I Cultural Resources Investigation of 18 Parcels in the City of Lancaster, Los Angeles County, CA

AREA: 92.5 ac

SITES: None

QUADNAME: Lancaster West

MEMO:

IC ID#: LA7991

DATE: 2006

PAGES: 40

AUTHOR: Tang, Bai "Tom"; Hogan, Michael; and Smallwood, Josh

FIRM: CRM Tech

TITLE: Cultural Resources Technical Report City of Lancaster General Plan Update

AREA: ~171200 ac

SITES: 566 sites listed on pgs 7-18, 144 historic buildings listed on pgs 19-21

QUADNAME: Alpine Butte, Del Sur, Lancaster East, Lancaster West, Little Buttes, Redman, Rosamond, Rosam

MEMO:

IC ID#: LA8025

DATE: 2006

PAGES: 19

AUTHOR: Hudlow, Scott M.

FIRM: Hudlow Cultural Resource Associates

TITLE: A Phase I Cultural Resource Survey for Property at 70th Street West and Avenue L-8, City of Lancaster, California

AREA: 40 ac

SITES: None

QUADNAME: Lancaster West, Del Sur

MEMO:

Bibliography: Southeast and Northwest Corners of 60th Street West and Avenue L

IC ID#: LA8168

DATE: 2007

PAGES: 24

AUTHOR: Jordan, Stacey C.

FIRM: Jones & Stokes

TITLE: Archaeological Survey Report for Southern California Edison Company Antelope-Bailey Reconductoring Project, Los Angeles County, California

AREA: ~450 ac

SITES: 19-003385, 19-003477

QUADNAME: Del Sur, Lancaster West

MEMO:

IC ID#: LA8234

DATE: 2007

PAGES: 66

AUTHOR: McKenna, Jeanette A.

FIRM: McKenna et al.

TITLE: A Phase I Cultural Resources Investigation of Approximately 17.5 Acres of Land on the Northwestern Corner of Avenue K and 60th Street West in the City of Lancaster, Los Angeles County, California

AREA: 17.5 ac

SITES: See Report

QUADNAME: Lancaster West

MEMO:

IC ID#: LA8344

DATE: 2006

PAGES: 48

AUTHOR: McKenna, Jeanette A.

FIRM: McKenna et al.

TITLE: A Phase I Cultural Resources Investigation for the Antelope Valley Land, LLC Properties (APNs 3204-006-028, -036, and -037) in the City of Lancaster, Los Angeles County, California

AREA: 15 ac

SITES: None

QUADNAME: Lancaster West

MEMO:

Bibliography: Southeast and Northwest Corners of 60th Street West and Avenue L

IC ID#: LA8328

DATE: 2003

PAGES: 22

AUTHOR: Simon, Joseph

FIRM: W & S Consultants

TITLE: Phase I Archaeological Survey of Tracts 54275 and 54276, City of Lancaster, Los Angeles County, California

AREA: 55.05 ac

SITES: 19-002099, 19-002091

QUADNAME: Lancaster West

MEMO:

IC ID#: LA8427

DATE: 2007

PAGES: 68

AUTHOR: Cooley, Theodore G.

FIRM: Jones & Stokes

TITLE: Archaeological Survey Report for Southern California Edison Company 66kV Antelope Bus Split Project Los Angeles County, California

AREA: 1181.5 ac

SITES: See Report

QUADNAME: Alpine Butte, Lancaster East, Lancaster West, Littlerock, Palmdale, Ritter Ridge

MEMO:

IC ID#: LA8426

DATE: 2007

PAGES: 32

AUTHOR: Cooley, Theodore G.

FIRM: Jones & Stokes

TITLE: Archaeological Survey Report for Southern California Edison Company Antelope-Quartz Hill No. 2 66kV Line Project, Los Angeles County, California (JO# 3196 0468)

AREA: 5.82 li mi

SITES: 19-003477, 19-003676, and see report

QUADNAME: Del Sur, Lancaster West

MEMO:

Bibliography: Southeast and Northwest Corners of 60th Street West and Avenue L

IC ID#: LA8441

DATE: 2004

PAGES: 42

AUTHOR: McKenna, Jeanette

FIRM: McKenna et al.

TITLE: A Phase I Cultural Resources Investigation for the Taft Corporation Property in the City of Lancaster, Los Angeles County, California

AREA: 360 ac

SITES: None

QUADNAME: Lancaster West

MEMO:

IC ID#: LA8442

DATE: 2004

PAGES: 32

AUTHOR: McKenna, Jeanette

FIRM: McKenna et al.

TITLE: A Phase I Cultural Resources Investigation of Assessor Parcel Number No. 3203-018-005, Located in City of Lancaster, Los Angeles County, California

AREA: 5.4 ac

SITES: 19-002885, 19-002099, 19-002091, 19-100419

QUADNAME: Lancaster West

MEMO:

IC ID#: LA8452

DATE: 2004

PAGES: 19

AUTHOR: Hudlow, Scott M.

FIRM: Hudlow Cultural Resource Associates

TITLE: A Phase I Cultural Resources Survey for Property at the Southwest Corner of 60th West and Avenue K, City of Lancaster, California

AREA: 20 ac

SITES: None

QUADNAME: Lancaster West

MEMO:

Bibliography: Southeast and Northwest Corners of 60th Street West and Avenue L

IC ID#: LA8455

DATE: 2004

PAGES: 19

AUTHOR: Hudlow, Scott M.

FIRM: Hudlow Cultural Resource Associates

TITLE: A Phase I Cultural Resources Survey for Property at 55th West and Avenue K, City of Lancaster, California

AREA: 20 ac

SITES: None

QUADNAME: Lancaster West

MEMO:

IC ID#: LA8457

DATE: 2004

PAGES: 19

AUTHOR: Hudlow, Scott M.

FIRM: Hudlow Cultural Resource Associates

TITLE: A Phase I Cultural Resources Survey for Property at 57th West and Avenue K, City of Lancaster, California

AREA: 15 ac

SITES: None

QUADNAME: Lancaster West

MEMO:

IC ID#: LA8461

DATE: 2006

PAGES: 12

AUTHOR: Bonner, Wayne H.

FIRM: Michael Brandman Associates

TITLE: Records Search Results and Site Visit for T-Mobile Candidate LA03262A (South Street Plaza), 5715 Lakewood Boulevard, Long Beach, Los Angeles County, California

AREA: < 1 ac

SITES: None

QUADNAME: Long Beach

MEMO:

Bibliography: Southeast and Northwest Corners of 60th Street West and Avenue L

IC ID#: LA8162

DATE: 2005

PAGES: 16

AUTHOR: Hudlow, Scott

FIRM: Hudlow Cultural Resources Associates

TITLE: A Phase I Cultural Resource Survey for Property at 60th Street West and Avenue M. City of Palmdale, California

AREA: 13 ac

SITES: None

QUADNAME: Lancaster West

MEMO:

APPENDIX C

Native American Consultation



FAX TRANSMISSION

FAX (559) 229-2019 Phone (559) 229-1856

TO: Native American Heritage Commission
FAX NO.: (916) 657-5390
FROM: Jay Lloyd
DATE: June 11, 2007
RE.: Request for Search of Sacred Lands Inventory File and Contact List
Number of pages, including this cover sheet: 2

Dear Mr. Wood

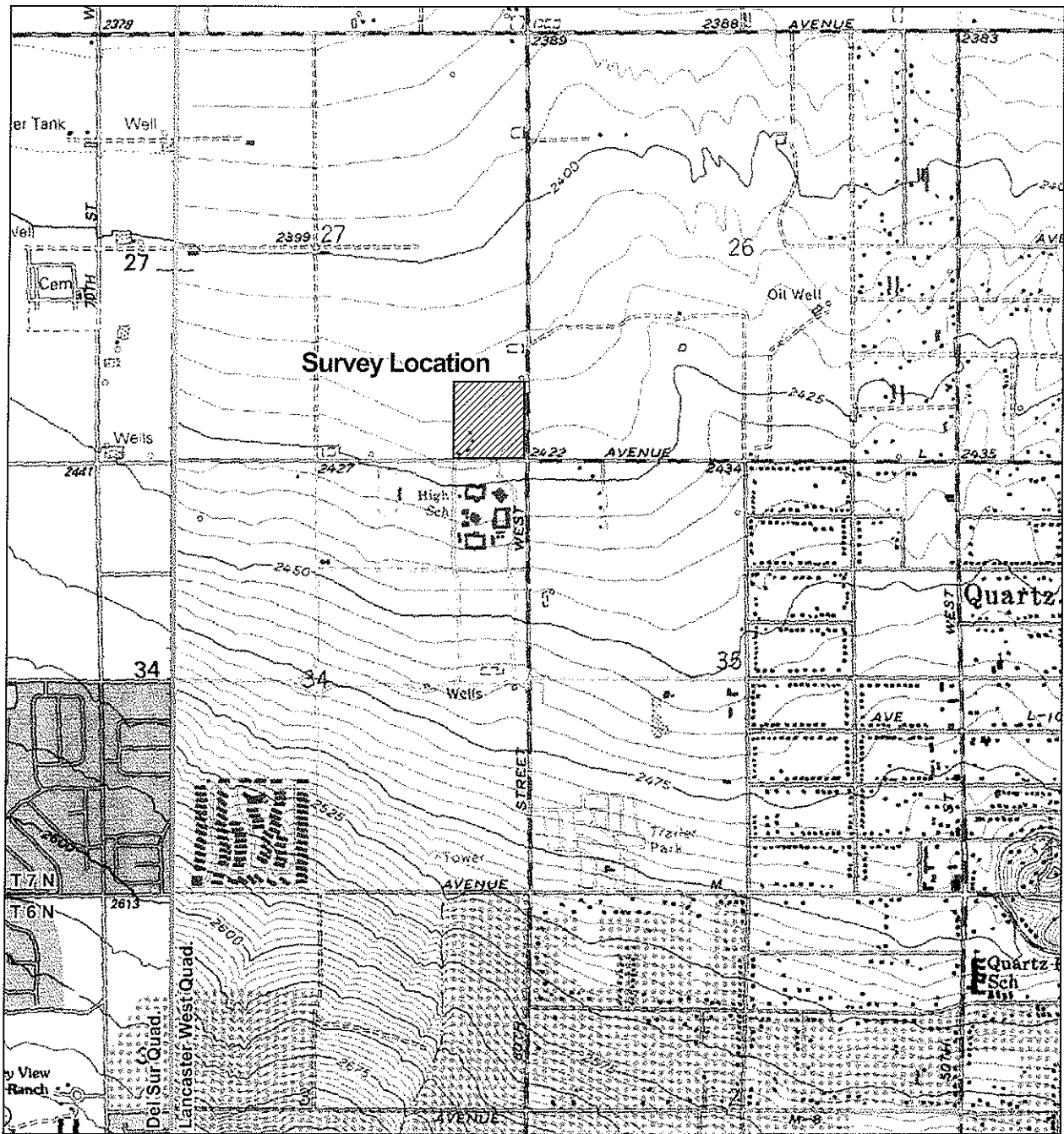
Applied EarthWorks, Inc. (Æ) is currently providing cultural resources services to Christopher A. Joseph and Associates in support of two Environmental Impact Reports for proposed developments at the southeast corner of 60th Street West and Avenue L, and the northwest corner of the same interchange in the City of Lancaster, Los Angeles County.

The project is in the City of Lancaster at the southeast and northwest corners of the intersection of 60th Street West and Avenue L. Its legal description is T7N, R13W, sections 34 and 35, as shown on the Lancaster West, CA USGS 7.5 quadrangle (see map). Æ formally requests that you review the Sacred Lands Inventory Files for sacred or sensitive areas that may be within or near the project area.

Additionally, we request the names and contact information of the Native American representatives in the project vicinity in order to provide those individuals with information regarding the project. Please do not hesitate to contact me if you have any questions or require further information at (559)-229-1856. Please FAX the results to us at (559) 229-2019. Thank you for your assistance.

Sincerely,

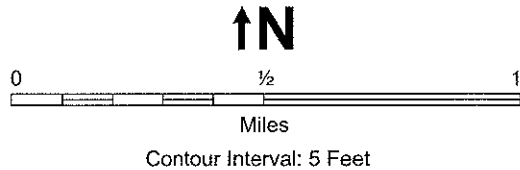
Jay Lloyd
Project Director



Confidential: Not for Public Distribution

Prepared by Applied EarthWorks, Inc.

U.S.G.S. 7.5 Minute
 Topographic Quadrangle
Del Sur and Lancaster West, CA
 T 7 N - R 13 W
 1958, Photorevised 1974
 Del Sur 1995



Survey location at the intersection of 60th Street and Avenue L.

STATE OF CALIFORNIAArnold Schwarzenegger, Governor**NATIVE AMERICAN HERITAGE COMMISSION**

915 CAPITOL MALL, ROOM 364
SACRAMENTO, CA 95814
(916) 653-6251
Fax (916) 657-5390
Web Site www.nahc.ca.gov
e-mail: da_nahc@pacbell.net



June 20, 2007

Jay Lloyd
Project Director
Applied EarthWorks, Inc.

Sent by FAX: 559-229-2019
Number of pages: 2

Re: Development Project at 60th Street West and Avenue L, Lancaster, Los Angeles County.

Dear Mr. Lloyd:

The Native American Heritage Commission was able to perform a record search of its Sacred Lands File (SLF) for the affected project area. The SLF failed to indicate the presence of Native American cultural resources in the immediate project area. The absence of specific site information in the Sacred Lands File does not guarantee the absence of cultural resources in any 'area of potential effect (APE).'

Early consultation with Native American tribes in your area is the best way to avoid unanticipated discoveries once a project is underway. Enclosed are the nearest tribes that may have knowledge of cultural resources in the project area. A List of Native American contacts are attached to assist you. The Commission makes no recommendation of a single individual or group over another. It is advisable to contact the person listed; if they cannot supply you with specific information about the impact on cultural resources, they may be able to refer you to another tribe or person knowledgeable of the cultural resources in or near the affected project area (APE).

Lack of surface evidence of archeological resources does not preclude the existence of archeological resources. Lead agencies should consider avoidance, as defined in Section 15370 of the California Environmental Quality Act (CEQA) when significant cultural resources could be affected by a project. Also, Public Resources Code Section 5097.98 and Health & Safety Code Section 7050.5 provide for provisions for accidentally discovered archeological resources during construction and mandate the processes to be followed in the event of an accidental discovery of any human remains in a project location other than a 'dedicated cemetery. Discussion of these should be included in your environmental documents, as appropriate.

If you have any questions about this response to your request, please do not hesitate to contact me at (916) 653-6251.

Sincerely,


Dave Singleton
Program Analyst

Attachment: Native American Contact List

**Native American Contacts
Los Angeles County
June 18, 2007**

Charles Cooke
32835 Santiago Road
Acton , CA 93510
(661) 269-1422
(661) 733-1812

Chumash
Fernandeno
Tataviam
Kitanemuk

LA City/County Native American Indian Comm
Ron Andrade, Director
3175 West 6th Street, Rm. 403
Los Angeles , CA 90020
(213) 351-5324
(213) 386-3995 FAX

Beverly Salazar Folkes
1931 Shadybrook Drive
Thousand , CA 91362
805 492-7255

Chumash
Tataviam
Fernandeno

Kitanemuk & Yowlumne Tejon Indians
Delia Dominguez
981 N. Virginia
Covina , CA 91722
(626) 339-6785
Yowlumne
Kitanemuk

San Manuel Band of Mission Indians
Henry Duro, Chairperson
26569 Community Center Drive
Highland , CA 92346
(909) 864-8933
(909) 864-3370 Fax

Serrano

San Fernando Band of Mission Indians
John Valenzuela, Chairperson
P.O. Box 221838
Newhall , CA 91322
tsen2u@msn.com
(661) 753-9833 Office
(760) 885-0955 Cell
(760) 949-1604 Fax
Fernandeno
Tataviam
Serrano
Vanyume
Kitanemuk

Fernandeno Tataviam Band of Mission Indians
Randy Guzman-Folkes, Dir. Cultural and Environmental Department
601 South Brand Boulevard, Suite 102
San Fernando , CA 91340
ced@tataviam.org
(818) 837-0794 Office
(805) 501-5279 Cell
(818) 837-0796 Fax

Fernandeno
Tataviam

Kern Valley Indian Council
Robert Robinson, Historic Preservation Officer
P.O. Box 401
Weldon , CA 93283
brobinson@mchsi.com
(760) 378-4575 (Home)
(760) 549-2131 (Work)
Tubatulabal
Kawailsu
Koso
Yokuts

This list is current only as of the date of this document.

Distribution of this list does not relieve any person of statutory responsibility as defined in Section 7050.5 of the Health and Safety Code, Section 5097.94 of the Public Resources Code and Section 5097.98 of the Public Resources Code.

This list is only applicable for contacting local Native American with regard to cultural resources for the proposed Development Project at 60th Street West and Avenue L in the City of Lancaster, Los Angeles County, California for which a Sacred Lands File search was requested.



EXAMPLE

5090 North Fruit Avenue
Suite 101
Fresno, CA 93711-3064
(559) 229-1856
FAX (559) 229-2019

6 July 2007

Charles Cooke
32835 Santiago Road
Acton, CA 93510

RE: Development Projects at 60th Street West and Avenue L, Lancaster, Los Angeles County, California.

Dear Mr. Cooke:

The Native American Heritage Commission (NAHC) provided your name to us as person who has knowledge of cultural resources in the northeastern Los Angeles County area.

Applied EarthWorks, Inc. (Æ) is currently providing services to Christopher A. Joseph and Associates (CAJA) in support of the Lane Ranch Towne Center and The Commons at Quartz Hill projects in Lancaster. The projects are subject to the California Environmental Quality Act which requires agencies to assist the NAHC in its efforts to preserve and protect locations of sacred or special cultural and spiritual significance to Native Americans under State Public Resources Code §5097.9.

Specifically, the project lies in T7N, R13W, Sections 27 and 35, as shown on the Lancaster West, CA USGS 7.5-minute quadrangle (see attached map).

If you have information regarding the study area or have interest in the project, please phone me or send a letter to my attention. Your comments will be included in our cultural resources inventory report. You can contact me during normal business hours (559-229-1856, ext. 15). Thank you.

Sincerely,

A handwritten signature in black ink, appearing to read 'Jay Lloyd', with a long horizontal flourish extending to the right.

Jay Lloyd
Associate Archaeologist