

SCALE 1' = 200'

TRACT NO. 54366

SHEET 2 OF 3 SHEETS

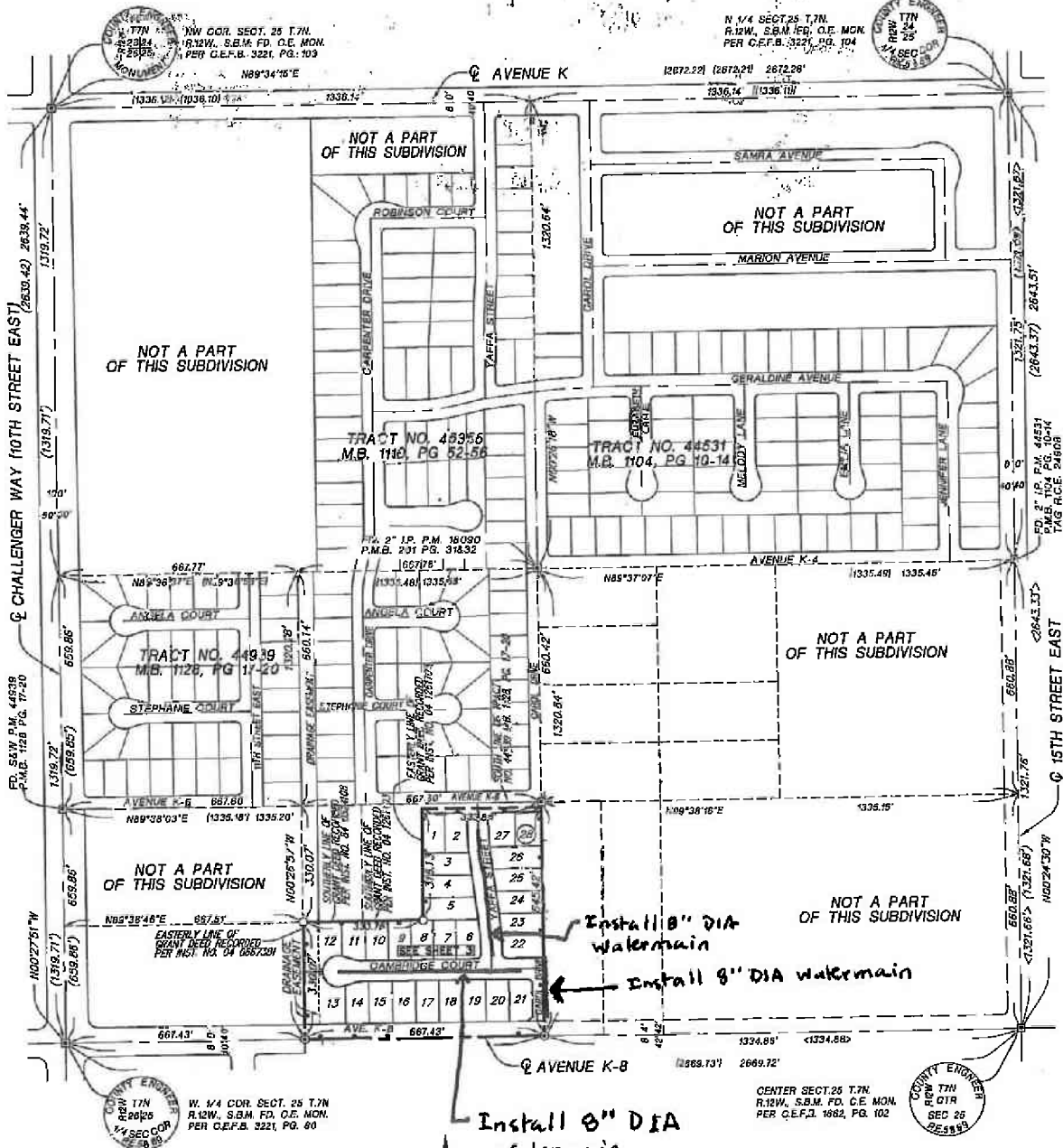
IN THE CITY OF LANCASTER
COUNTY OF LOS ANGELES, STATE OF CALIFORNIA

RANDALL A. GREENWOOD R.C.E. 29220

SURVEY DETAIL AND INDEX MAP

28 LOTS

7.47 ACRES



LEGEND

- INDICATES THE BOUNDARY OF THE LAND BEING SUBDIVIDED BY THIS MAP
- SPIKE AND WASHER TO BE SET
- 2 3/8" I.P. TO BE SET
- FOUND MONUMENT AS DESCRIBED

- () INDICATES RECORD DATA PER TRACT MAP NO. 44939
- < > INDICATES RECORD DATA PER TRACT MAP NO. 44631
- () INDICATES RECORD DATA PER TRACT MAP NO. 45355



I HEREBY CERTIFY THAT SECURITY IN THE AMOUNT OF \$ 11,400.00 HAS BEEN FILED WITH THE CLERK OF THE BOARD OF SUPERVISORS OF THE COUNTY OF LOS ANGELES AS SECURITY FOR THE PAYMENT OF TAXES AND SPECIAL ASSESSMENTS COLLECTED AS TAXES ON THE LAND SHOWN ON MAP OF TRACT NO. 54366 AS REQUIRED BY LAW.

EXECUTIVE OFFICER-CLERK OF THE BOARD OF SUPERVISORS OF THE COUNTY OF LOS ANGELES, STATE OF CALIFORNIA
BY *Alison Pao 6-15-05*
DEPUTY

SCALE 1' = 200'

TRACT NO. 54368

SHEET 2 OF 3 SHEETS

REGISTRY CERTIFICATE ALL CERTIFICATES HAVE BEEN FILED AND DEPOSITS HAVE BEEN MADE THAT ARE REQUIRED UNDER THE PROVISIONS OF SECTIONS 66-68 AND 66-69 OF THE SUBDIVISION MAP ACT.

IN THE CITY OF LANCASTER
COUNTY OF LOS ANGELES, STATE OF CALIFORNIA

RESOLUTION OF THE BOARD OF SUPERVISORS OF THE COUNTY OF LOS ANGELES

RANDALL A. GREENWOOD R.C.E. 29220

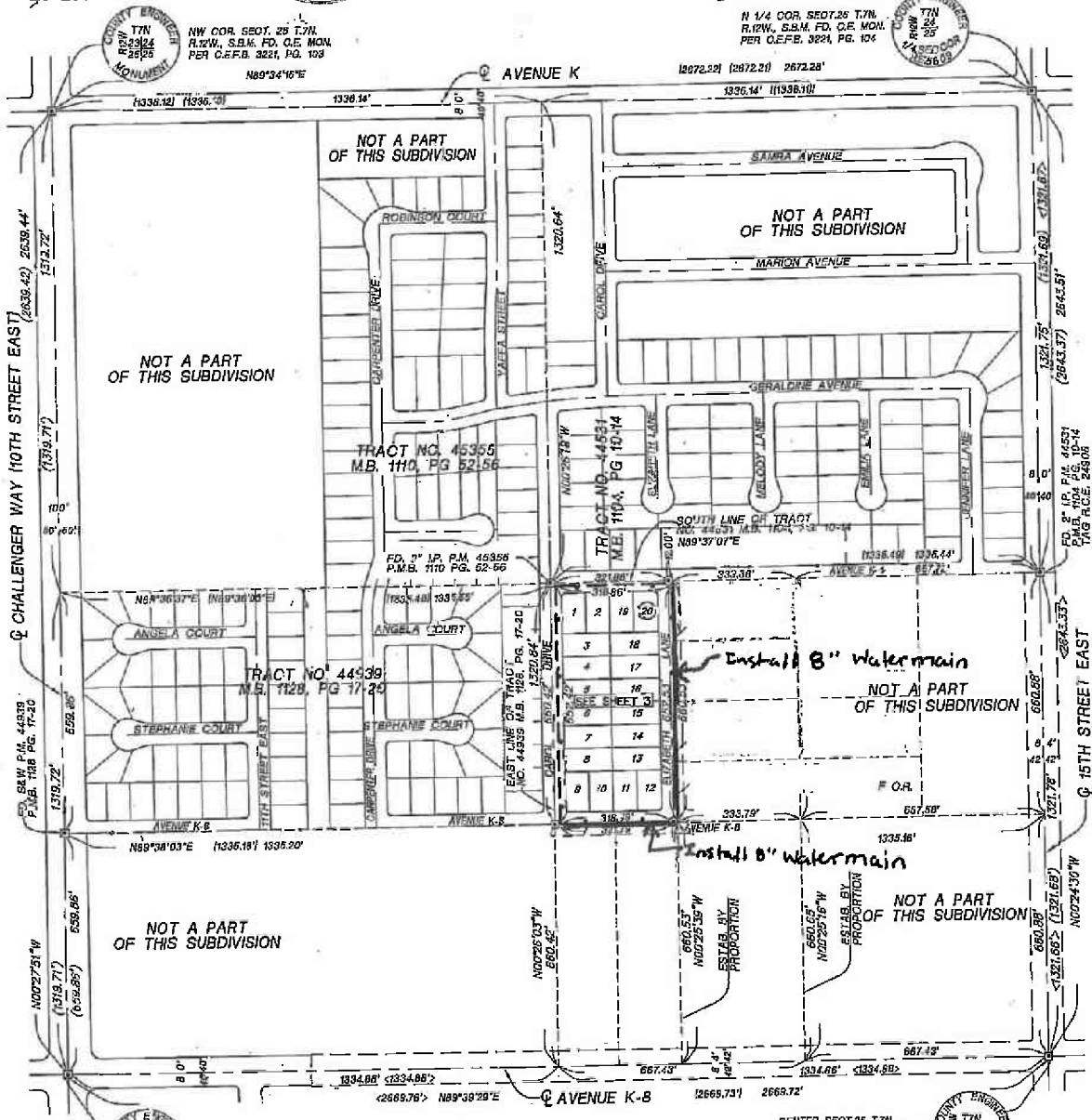
BY *[Signature]* 8-2-05
ENGINEER

SURVEY DETAIL AND INDEX MAP



20 LOTS

5.06 ACRES



LEGEND

- INDICATES THE BOUNDARY OF THE LAND BEING SUBDIVIDED BY THIS MAP
- ⊙ SPIKE AND WASHER TO BE SET
- ⊠ FOUND MONUMENT AS DESCRIBED
- () INDICATES RECORD DATA PER TRACT MAP NO. 44939
- < > INDICATES RECORD DATA PER TRACT MAP NO. 44531
- | | INDICATES RECORD DATA PER TRACT MAP NO. 45355



I HEREBY CERTIFY THAT SECURITY IN THE AMOUNT OF \$ 7,625.00 HAS BEEN FILED WITH THE CLERK OF THE BOARD OF SUPERVISORS OF THE COUNTY OF LOS ANGELES AS SECURITY FOR THE PAYMENT OF TAXES AND SPECIAL ASSESSMENTS FOR RECORDS SALES ON THE LAND SHOWN ON MAP OF TRACT NO. 54368 MAP NO. 54368 AS REQUIRED BY LAW.

REGISTRAR OFFICE - CLERK OF THE BOARD OF SUPERVISORS OF THE COUNTY OF LOS ANGELES
 COUNTY OF LOS ANGELES
 BY *[Signature]* 8-2-05
 DE 9210



SEAL: COUNTY ENGINEER
 TYN
 REG. 25
 SEC. 25
 RE. 5183

W. 1/4 COR. SECT. 25 T.7N.
 R.12W., S.B.M. FD. C.E. MON.
 PER C.E.F.B. 1682, PG. 90

CENTER SECT. 25 T.7N.
 R.12W., S.B.M. FD. C.E. MON.
 PER C.E.F.B. 1682, PG. 102

SEAL: COUNTY ENGINEER
 TYN
 REG. 25
 SEC. 25
 RE. 5183

SCALE 1' = 200'

TRACT NO. 061079

SHEET 2 OF 3 SHEETS

I HEREBY CERTIFY THAT SECURITY IN THE AMOUNT OF \$275.00 HAS BEEN FILED WITH THE CLERK OF THE BOARD OF SUPERVISORS OF THE COUNTY OF LOS ANGELES AS SECURITY FOR THE PAYMENT OF TAXES AND SPECIAL ASSESSMENTS COLLECTED AS TAXES ON THE LAND SHOWN ON MAP OF TRACT NO. / PARCEL MAP NO. AS REQUIRED BY LAW.

IN THE CITY OF LANCASTER
COUNTY OF LOS ANGELES, STATE OF CALIFORNIA

I HEREBY CERTIFY THAT ALL CERTIFICATES HAVE BEEN FILED AND DEPOSITS HAVE BEEN MADE THAT ARE REQUIRED UNDER THE PROVISIONS OF SECTIONS 66493 AND 66495 OF THE SUBDIVISION MAP ACT.

EXECUTIVE OFFICER-CLERK OF THE BOARD OF SUPERVISORS OF THE COUNTY OF LOS ANGELES, STATE OF CALIFORNIA

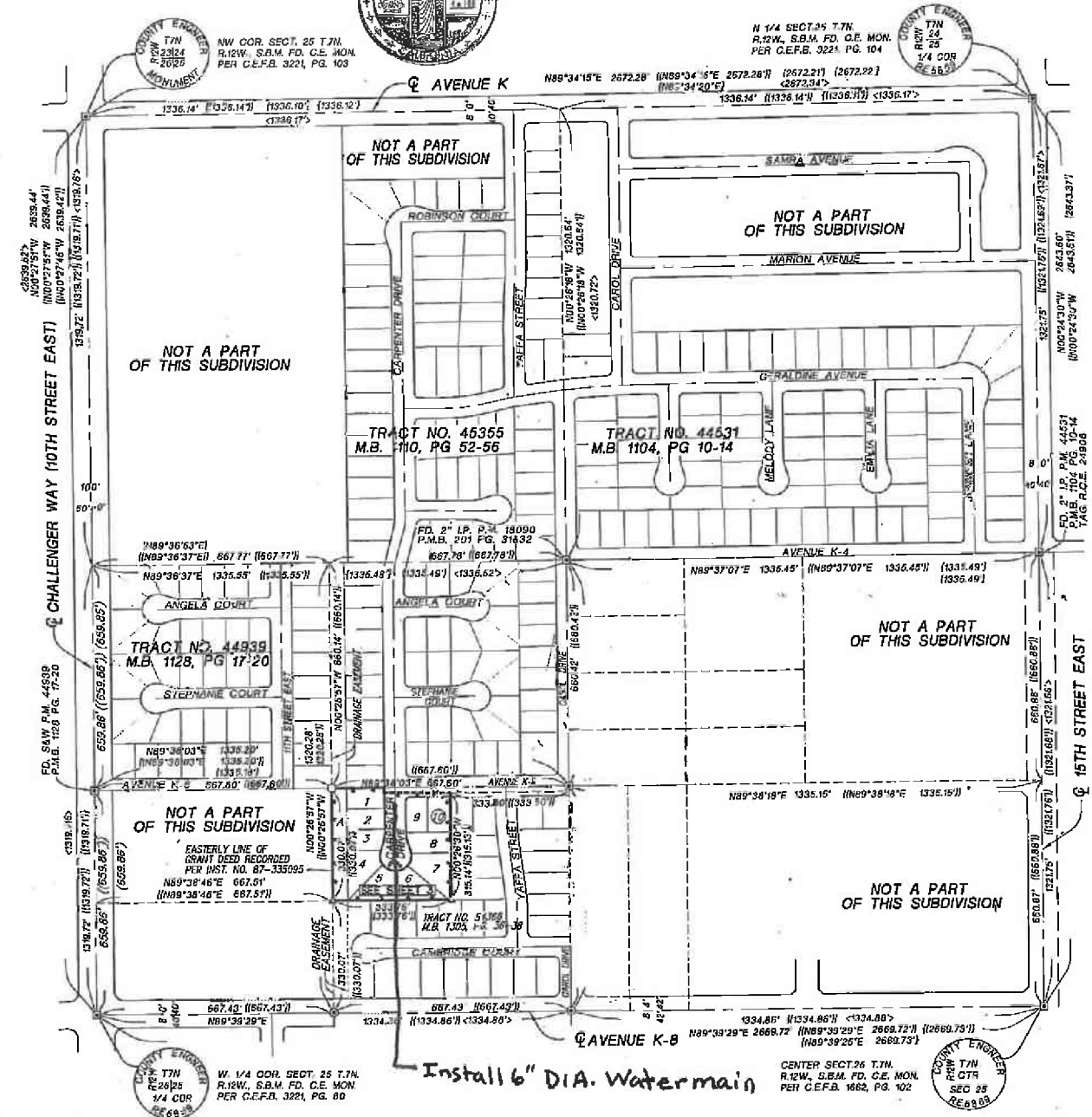
RANDALL A. GREENWOOD R.C.E. 29220

EXECUTIVE OFFICER-CLERK OF THE BOARD OF SUPERVISORS OF THE COUNTY OF LOS ANGELES, STATE OF CALIFORNIA

SURVEY DETAIL AND INDEX MAP

10 LOTS

2.47 ACRES



LEGEND

- INDICATES THE BOUNDARY OF THE LAND BEING SUBDIVIDED BY THIS MAP
- SAW TAGGED "RCE 29220" TO BE SET FLUSH
- 2 3/8" O.D. I.P. TAGGED "RCE 29220" TO BE SET
- FOUND MONUMENT AS DESCRIBED
- ▲ 2 3/8" O.D. I.P. TAGGED "RCE 29220" TO BE SET PER TRACT NO. 54366 BOOK 1305, PAGES 36-38. IF MONUMENT IS NOT SET WITHIN 24 MONTHS OF THE RECORDING DATE OF TRACT 54366, A 2 3/8" O.D. I.P. TAGGED "RCE 29220" SHALL BE SET.

Install 6" DIA. Water main

- () INDICATES RECORD DATA PER TRACT NO. 44939, M.B. 1128, PG. 17-20
- < > INDICATES RECORD DATA PER TRACT NO. 44531, M.B. 1104, PG. 10-14
- () INDICATES RECORD DATA PER TRACT NO. 45355, M.B. 1110, PG. 52-56
- (||) INDICATES RECORD DATA PER TRACT NO. 54366, M.B. 1305, PG. 36-38

