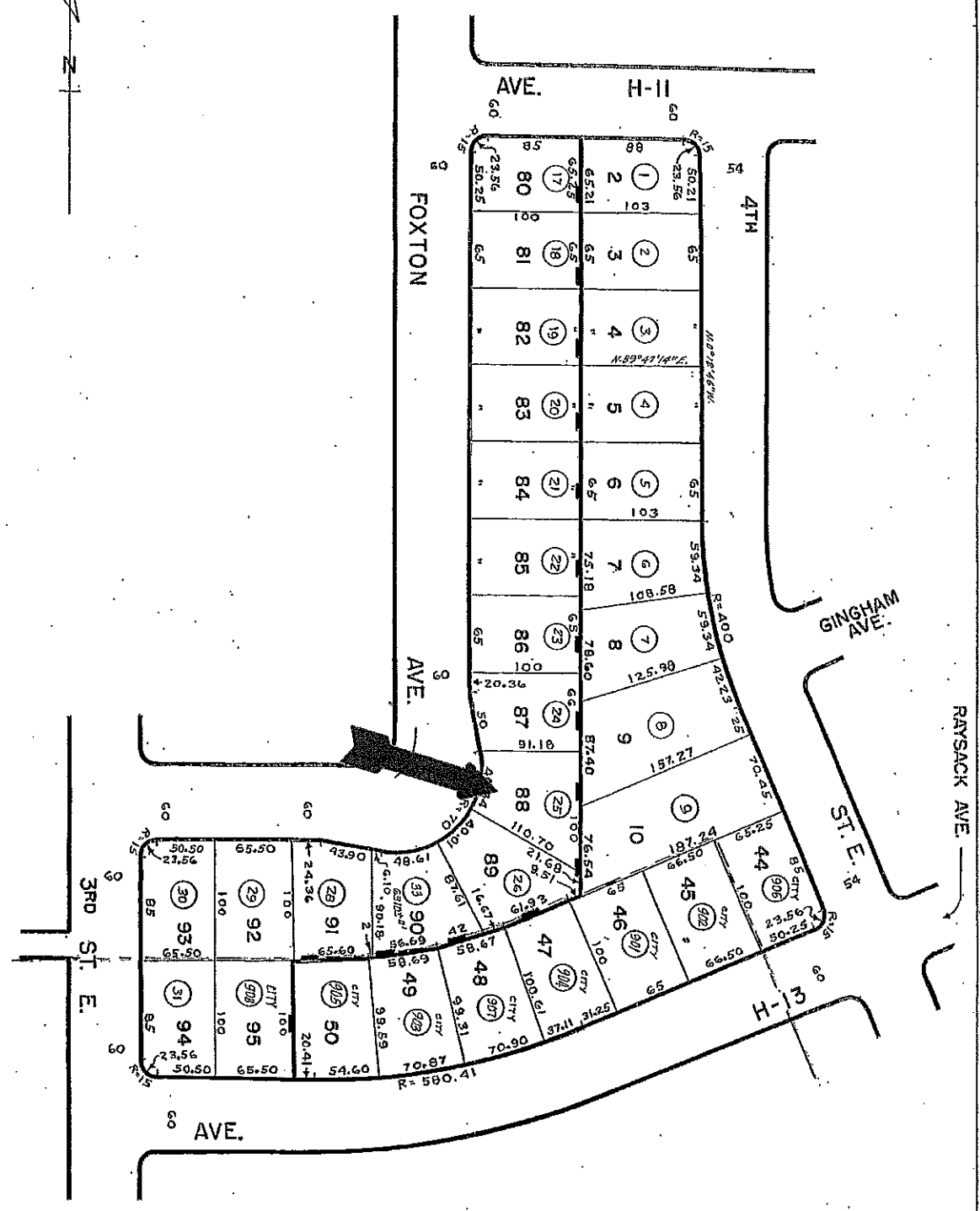
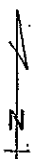
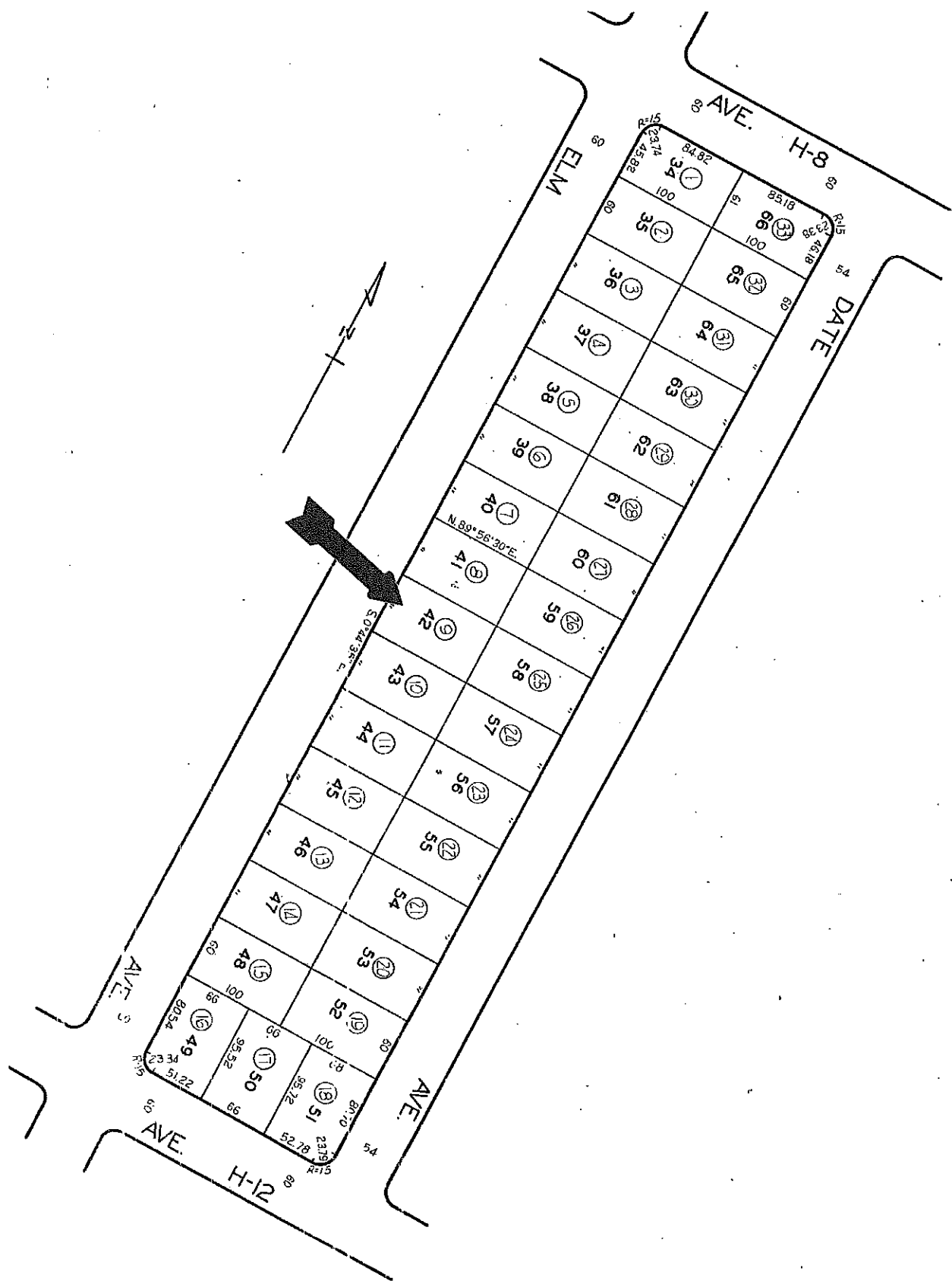


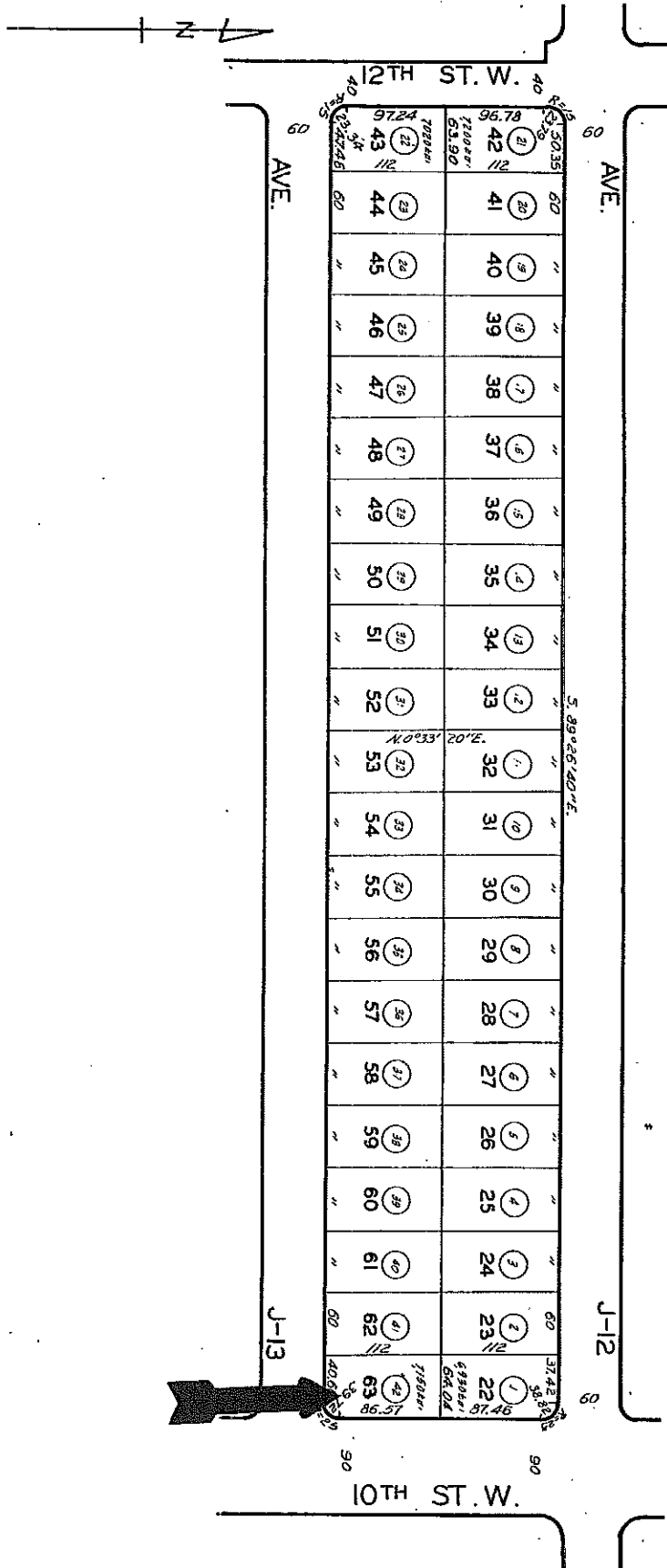
EXHIBIT "A"

Acquisition of Real Properties between the Lancaster Redevelopment Agency and various agencies as part of the Neighborhood Foreclosure Preservation Homeownership Program and the Neighborhood Stabilization Program for properties located within the Lowtree, Trend, Mariposa, Desert View, Challenger and Piute areas.

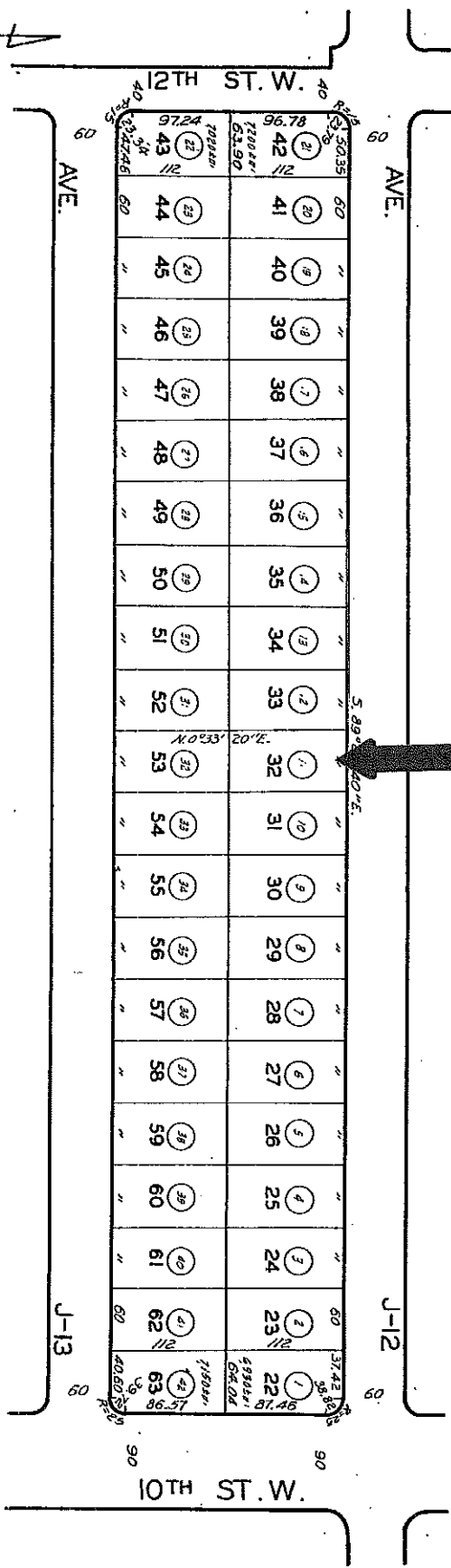
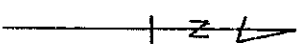
#	Property Address	Area	Sales Price	Property Owner	Real Estate Firm	Agent	Source of Funds
1	45432 Foxton	Piute	\$67,900	Deutsche Bank National Trust Company as Trustee the Long Beach Mortgage Loan Trust 2006-2	Keller Williams	Nancy Villasenor	NEPHP
2	631 W. Avenue H-12	Mariposa	\$49,900	Deutsche Bank National Trust Company, as Trustee under the Pooling and Servicing Agreement relating to the IMPAC Secured Assets	Coldwell Banker - Hartwige Realty	Concha Ramirez	NSP
3	1003 W. Avenue J-13	Lowtree	\$79,900	Deutsche Bank National Trust Company, on behalf of Financial Asset Securities Corp., Soundview Home Loan Trust 2007-WMC-1 Asset-Backed Certificates, Series 2007-WMC1	Cnetury 21 - Yarrow	Robert Kacik	NSP
4	1062 W. Avenue J-12	Lowtree	\$57,900	HSBC Bank USA, National Association, as Turstee under the Pooling and Servicing Agreement dated as of September 1, 2006, Fremont Home Loan Trust 2006-C	Realty Executives	Randy Conrad	NSP
5	45434 Fig	Piute	\$49,900	Deutsche Bank National Trust Company, as Trustee, in trust for the registered holders of Argent Securities Inc., Asset-Backed Pass-Through, Certificates, Series 2006-W2	Re/Max	Kent Steffes	NSP







H



TRACT NO. 18242
 M. B. 465-7-8

