

**EXHIBIT A**  
**ACCEPTANCE OF IMPROVEMENTS**  
**LANCASTER LANDSCAPE MAINTENANCE DISTRICT NO. 1**  
**10-Mar-09**

PROJECT NUMBER	LOCATION	DEVELOPER	1ST YEAR MAINTENANCE COST	DATE OF COUNCIL APPROVED	RESOLUTION NO. INITIATING PROCEEDINGS FOR ANNEXATION INTO LMD	RESOLUTION NO. DECLARING ITS INTENTION TO ANNEX TO TERRITORY	RESOLUTION NO. CONFIRMING THE DIAGRAM AND ASSESSMENT
TR 54406	West side of 5th St. E., approx. 500 feet north of Ave K	Silver Oaks Estates, LP	\$ 1,743.84	10/25/2005	05-228	05-229	05-232
<b>Total:</b>			\$ 1,743.84				

SCALE 1"=100'

SHEET 3 OF 5 SHEETS

# TRACT NO. 54406

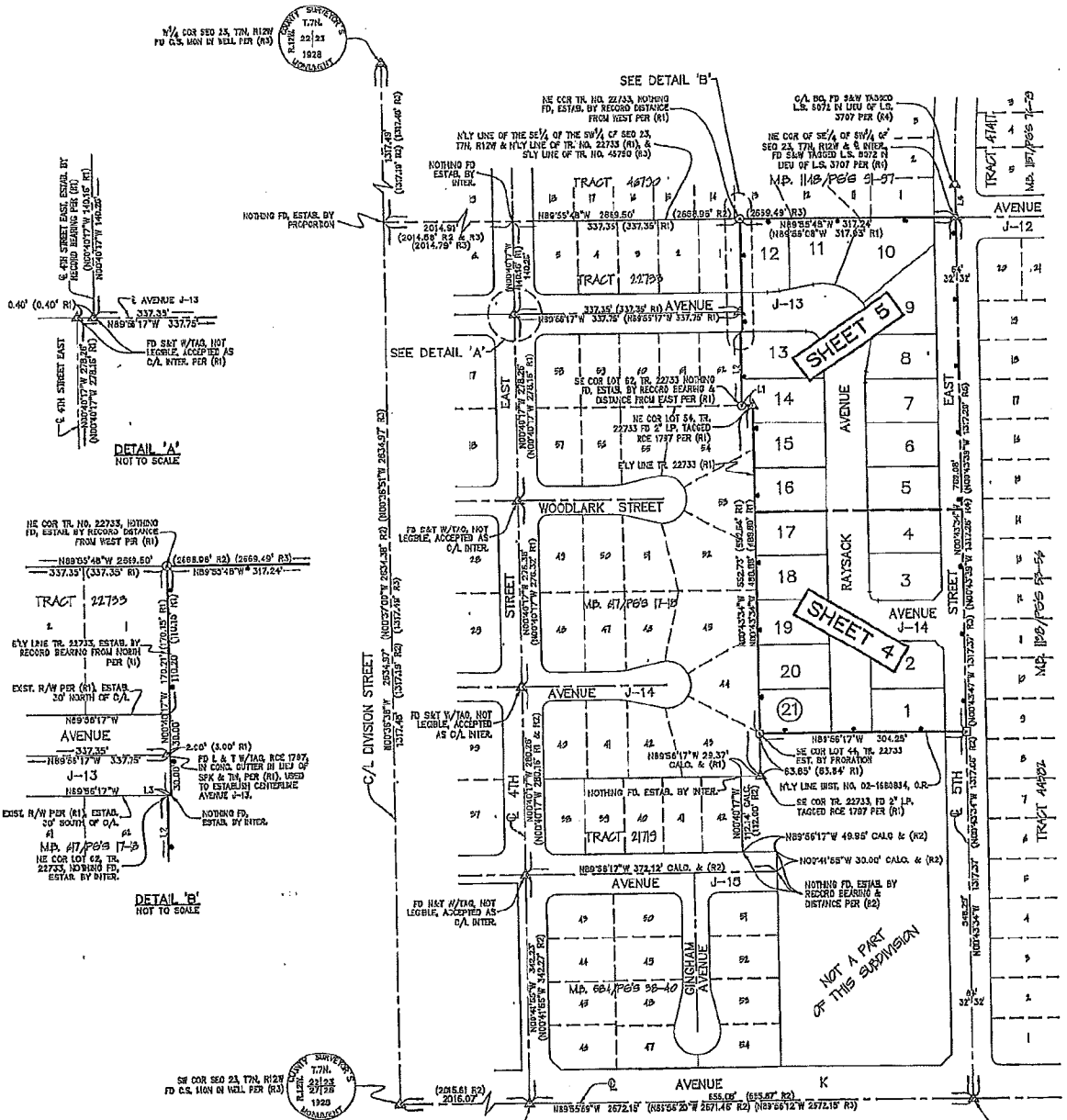
IN THE CITY OF LANCASTER, COUNTY OF LOS ANGELES,  
STATE OF CALIFORNIA

CHARLES J. BECK R.C.E. 19289

21 LOTS

## SURVEY DETAIL & INDEX MAP

5.46 ACRES



**LEGEND**

- ▲ INDICATES FOUND MONUMENT AS NOTED
- ⊠ INDICATES SPIKE & WASHER TAGGED ROE 19289 TO BE SET FLUSH
- ⊙ INDICATES LEAD & BRASS TACK WITH TAG, RCE 19289, TO BE SET IN TOP OF MASONRY WALL

(R1) TRACT NO. 22733, M.B. 817, PG'S 17-18  
 (R2) TRACT NO. 21710, M.B. 584, PG'S 38-40  
 (R3) TRACT NO. 48790, M.B. 1148, PG'S 91-97  
 (R4) TRACT NO. 47417, M.B. 1167, PG'S 76-79  
 (R5) TRACT NO. 44582, M.B. 1138, PG'S 53-58

INDICATES THE BOUNDARY OF THE LAND BEING SUBDIVIDED BY THIS MAP.

LINE	BEARING	LENGTH	RECORD LENGTH
L1	N89°56'17" W	19.00'	(16.00' R1)
L2	N00°40'17" W	110.04'	(2.73' R1)
L3	N89°56'17" W	2.75'	(2.73' R1)
L4	N00°43'34" W	—	(60.00' R4)

S/A COR SEC 23, T7N, R12W & G INTER. TO CORNER 5848 OF TAGGED LS 8402 IN C.E. WELL PER PWB 3528/228-258