

VESTING TRACT NO. 53297

IN THE CITY OF LANCASTER, COUNTY OF LOS ANGELES,
STATE OF CALIFORNIA

SURVEY DETAIL AND INDEX MAP

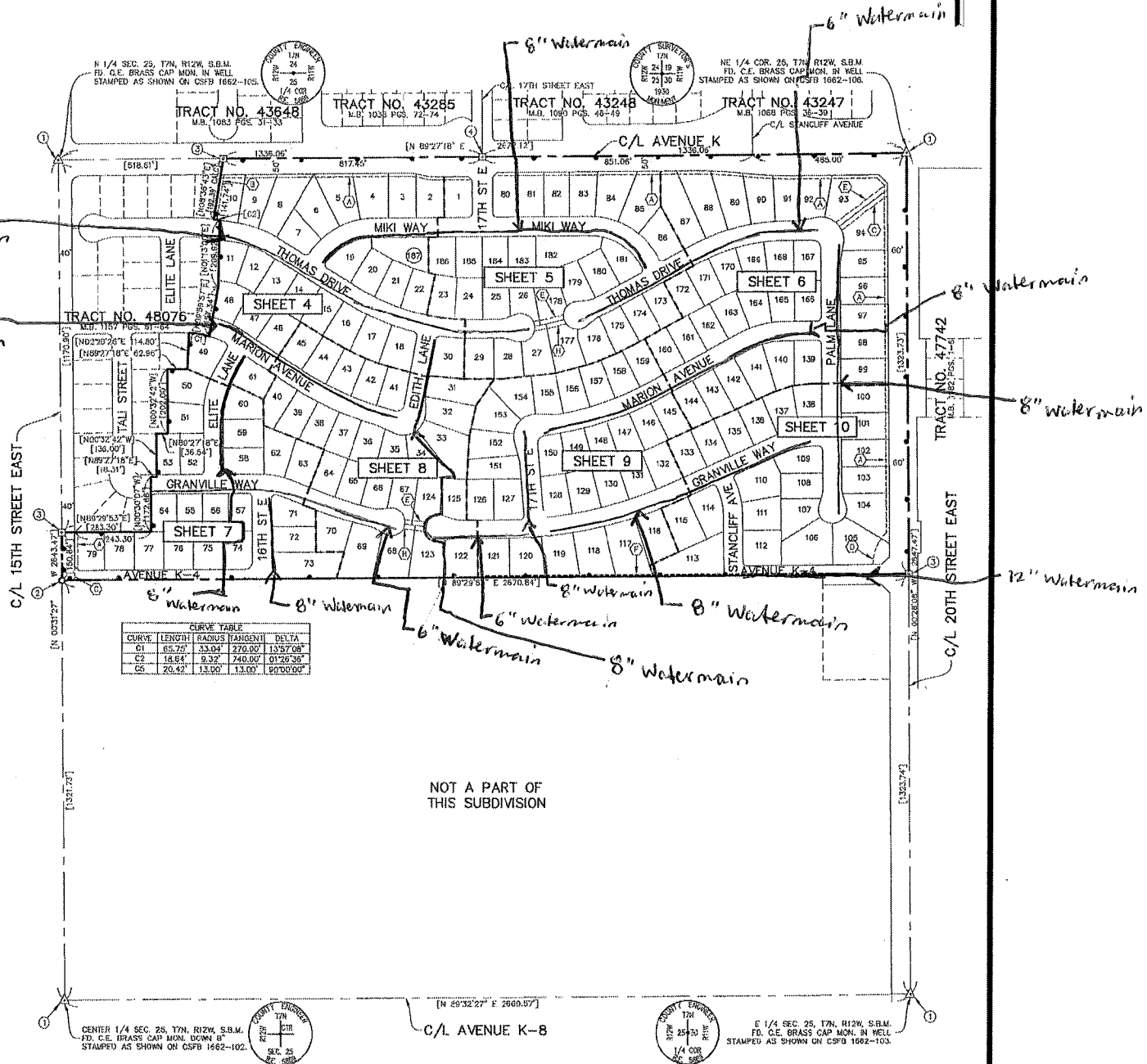
TERRAIN DEVELOPMENT, INC.
CARLOS A. ALBA L.S. 6583

187 LOTS
LEGEND:

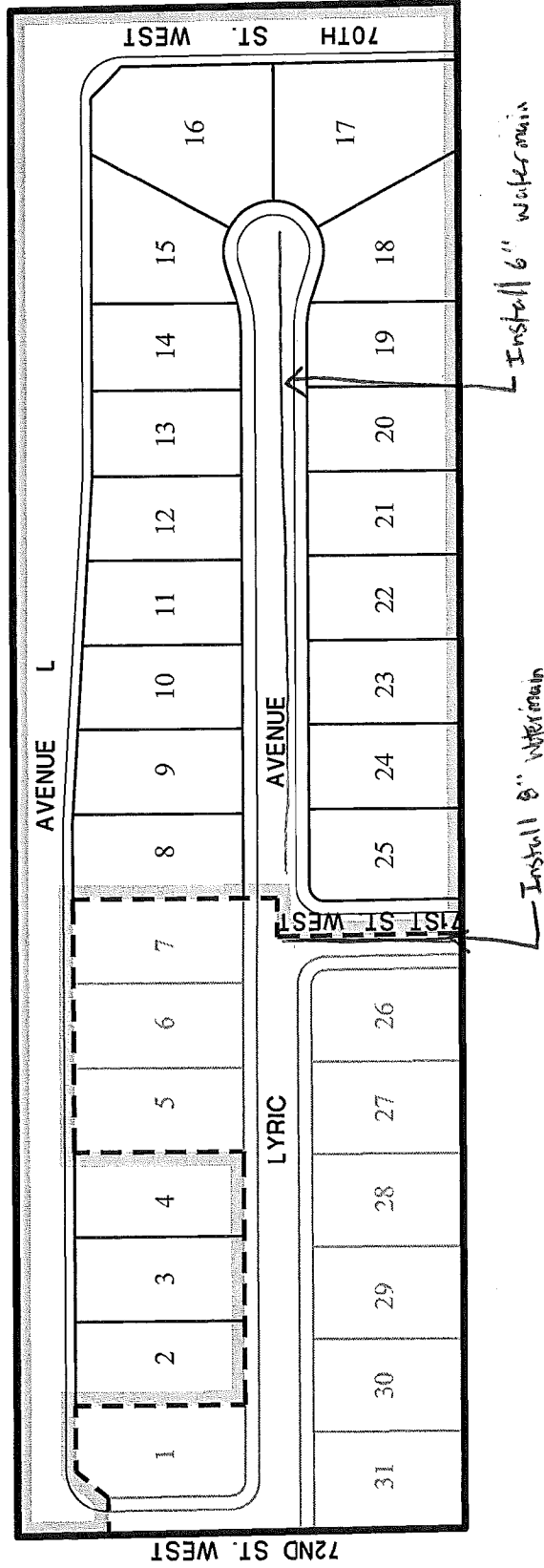
70.17 ACRES

- ① INDICATES BOUNDARY OF THE LAND BEING SUBDIVIDED BY THIS MAP
- △ FOUND MONUMENT AS DESCRIBED
- FOUND MONUMENT (2" IRON PIPE TAGGED L.S. 2304) SET PER TRACT NO. 46076
- FOUND MONUMENT (SPIKE & WASHER TAGGED L.S. 2304) SET PER TRACT NO. 46076
- ⊠ FOUND MONUMENT (SPIKE & WASHER TAGGED L.S. 21022) SET PER TRACT NO. 43245
- ⊡ SPRT. AND WASHER TAGGED L.S. 05031 TO BE SET
- ⊢ RESTRICTED DIRECT VEHICULAR INGRESS AND EGRESS
- ⊣ 10' WIDE LANDSCAPE EASEMENT DEDICATED TO THE CITY OF LANCASTER PER THIS MAP
- ⊤ 10' WIDE DRAINAGE AND STORM DRAIN EASEMENT DEDICATED TO THE CITY OF LANCASTER PER THIS MAP
- ⊥ 15' WIDE DRAINAGE AND STORM DRAIN EASEMENT DEDICATED TO THE CITY OF LANCASTER PER THIS MAP

- ⊕ VARIABLE WIDTH DRAINAGE AND LANDSCAPE EASEMENT DEDICATED TO THE CITY OF LANCASTER PER THIS MAP
- ⊖ 15' WIDE SANITARY SEWER EASEMENT DEDICATED TO THE CITY OF LANCASTER PER THIS MAP
- ⊗ EXISTING PUBLIC UTILITY EASEMENT TO SOUTHERN CALIFORNIA EDISON BY DEED RECORDED MARCH 1, 1951 AS INSTRUMENT NO. 2452 IN BOOK 35691 PAGE 29 TO REMAIN
- ⊘ EXISTING PIPE LINE EASEMENT TO SOUTHERN CALIFORNIA GAS COMPANY BY DOCUMENT RECORDED MARCH 4, 1956 AS INSTRUMENT NO. 95-277867, OFFICIAL RECORDS
- ⊙ 15' WIDE DRAINAGE AND PEDESTRIAN ACCESS EASEMENT DEDICATED TO THE CITY OF LANCASTER PER THIS MAP
- [] RECORD AND MEASURED DISTANCE PER TRACT NO. 48076 RECORDED IN BOOK 1157, PAGES 61-64.

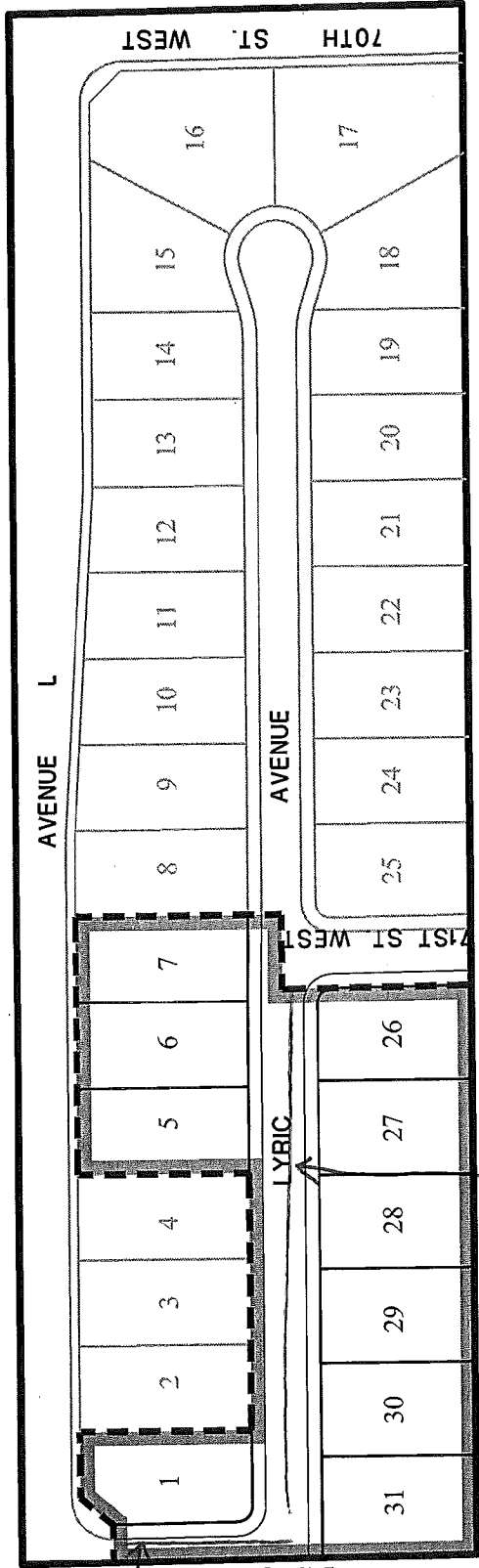


TRACT NO. 54369
CITY OF LANCASTER
LOTS 2-4, 8-25



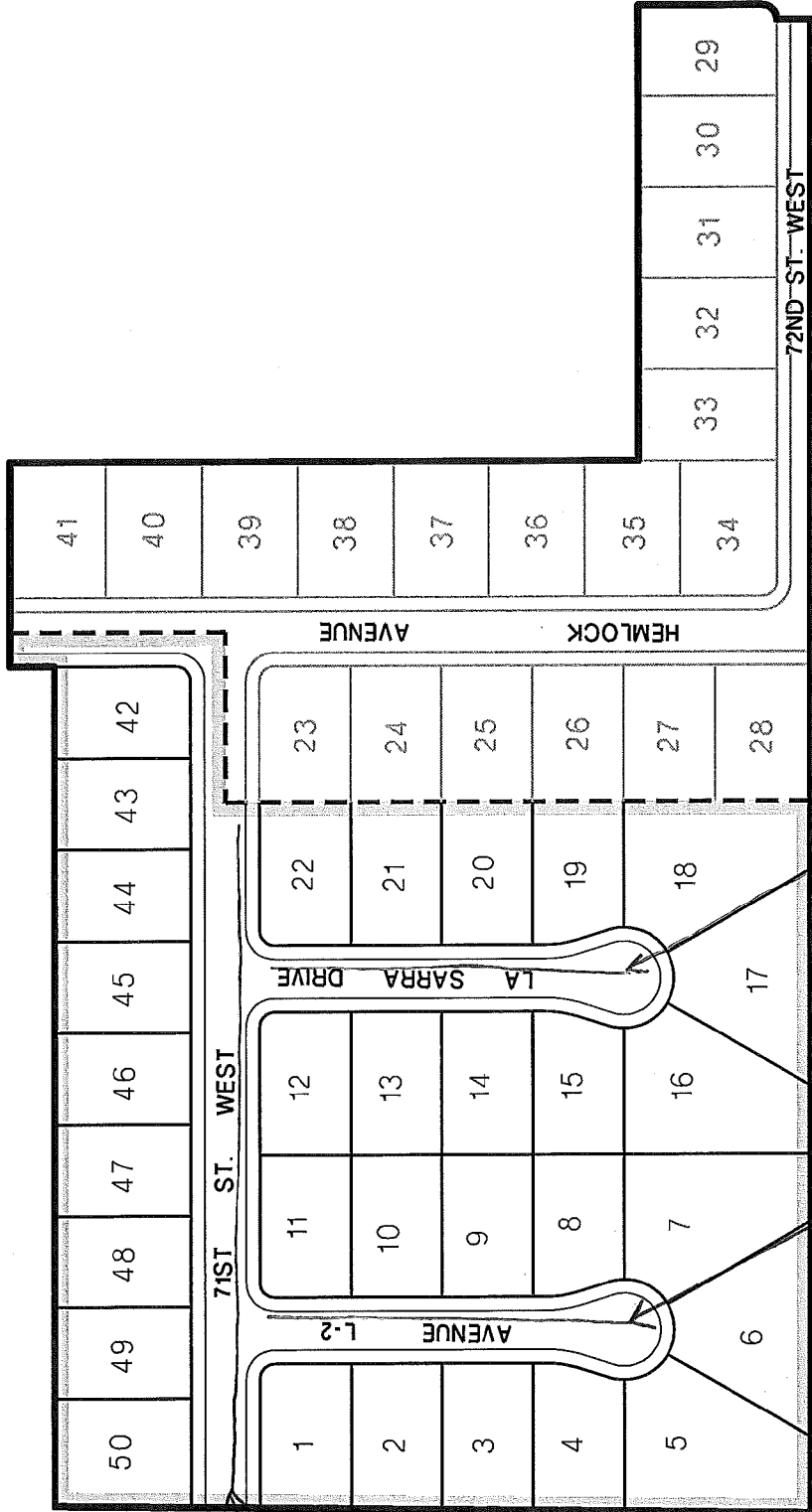
NO SCALE

TRACT NO. 54369
CITY OF LANCASTER
PLUM CANYON INVESTMENTS, LLC
LOTS 1, 5-7, 26-31



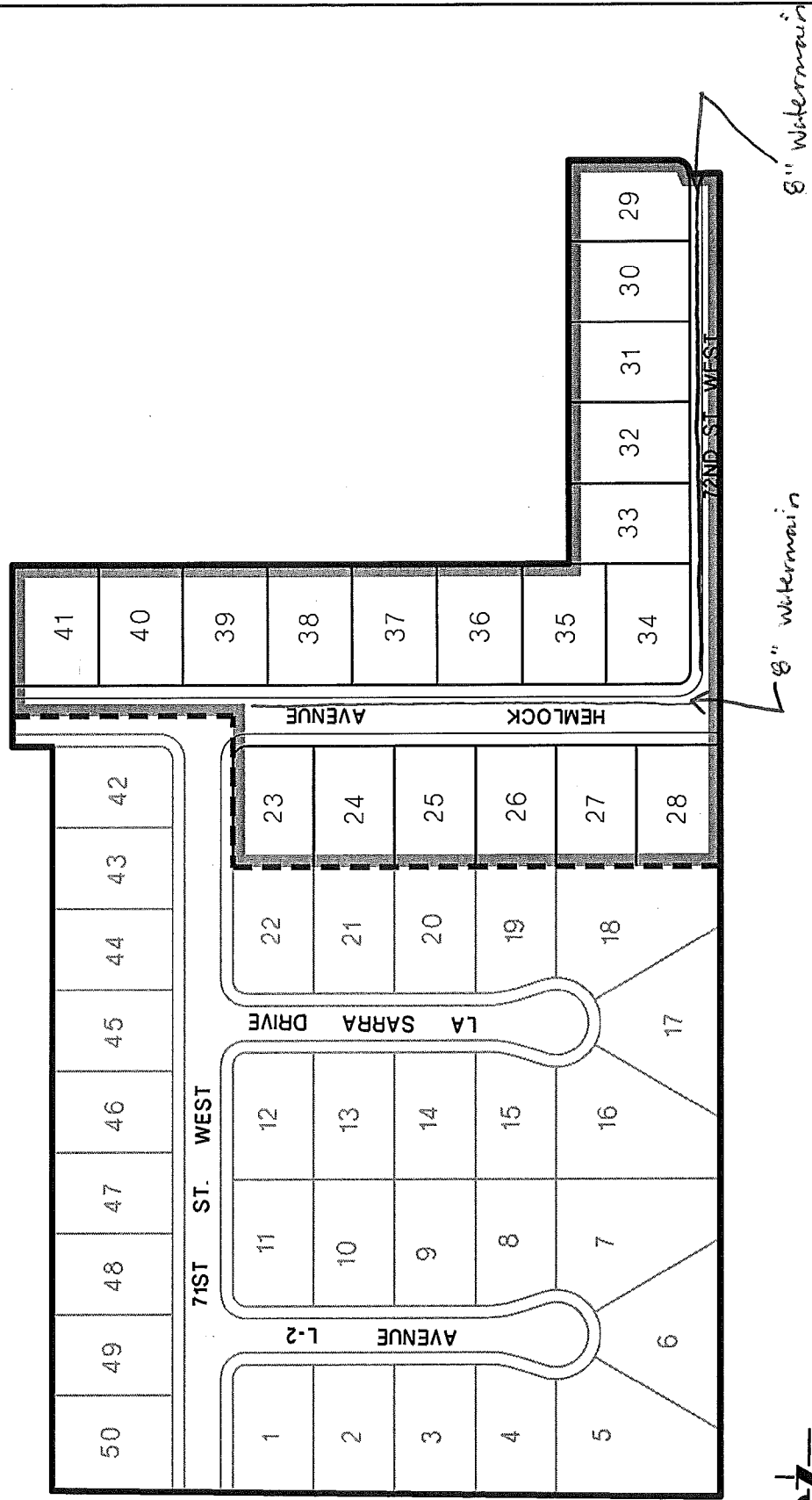
NO SCALE

TRACT NO. 54370-01
 CITY OF LANCASTER
 LOTS 1-22, 42-50



NO SCALE

TRACT NO. 54370-01
 CITY OF LANCASTER
 PLUM CANYON INVESTMENTS, LLC
 LOTS 23-41



NO SCALE