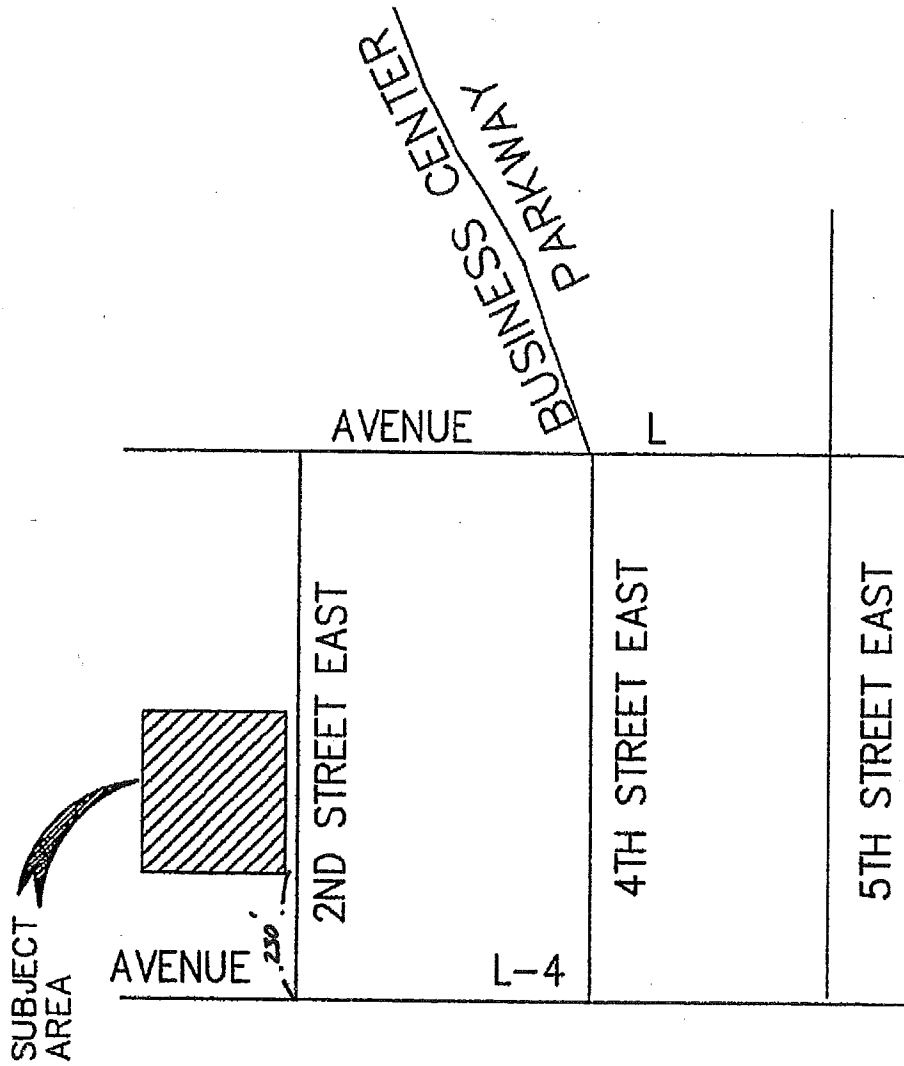




N.T.S.



SPR 04-22
VICINITY MAP

VESTING TRACT NO. 54401

IN THE CITY OF LANCASTER, COUNTY OF LOS ANGELES, STATE OF CALIFORNIA

I HEREBY CERTIFY THAT ALL CERTIFICATES HAVE BEEN FILED AND DEPOSITS HAVE BEEN MADE THAT ARE REQUIRED UNDER THE PROVISIONS OF SECTIONS 66492 AND 66493 OF THE SUBDIVISION MAP ACT.

EXECUTIVE OFFICER-CLERK OF THE BOARD OF SUPERVISORS OF THE COUNTY OF LOS ANGELES, STATE OF CALIFORNIA



TERRAIN DEVELOPMENT, INC.
CARLOS A. ALBA L.S. 6583

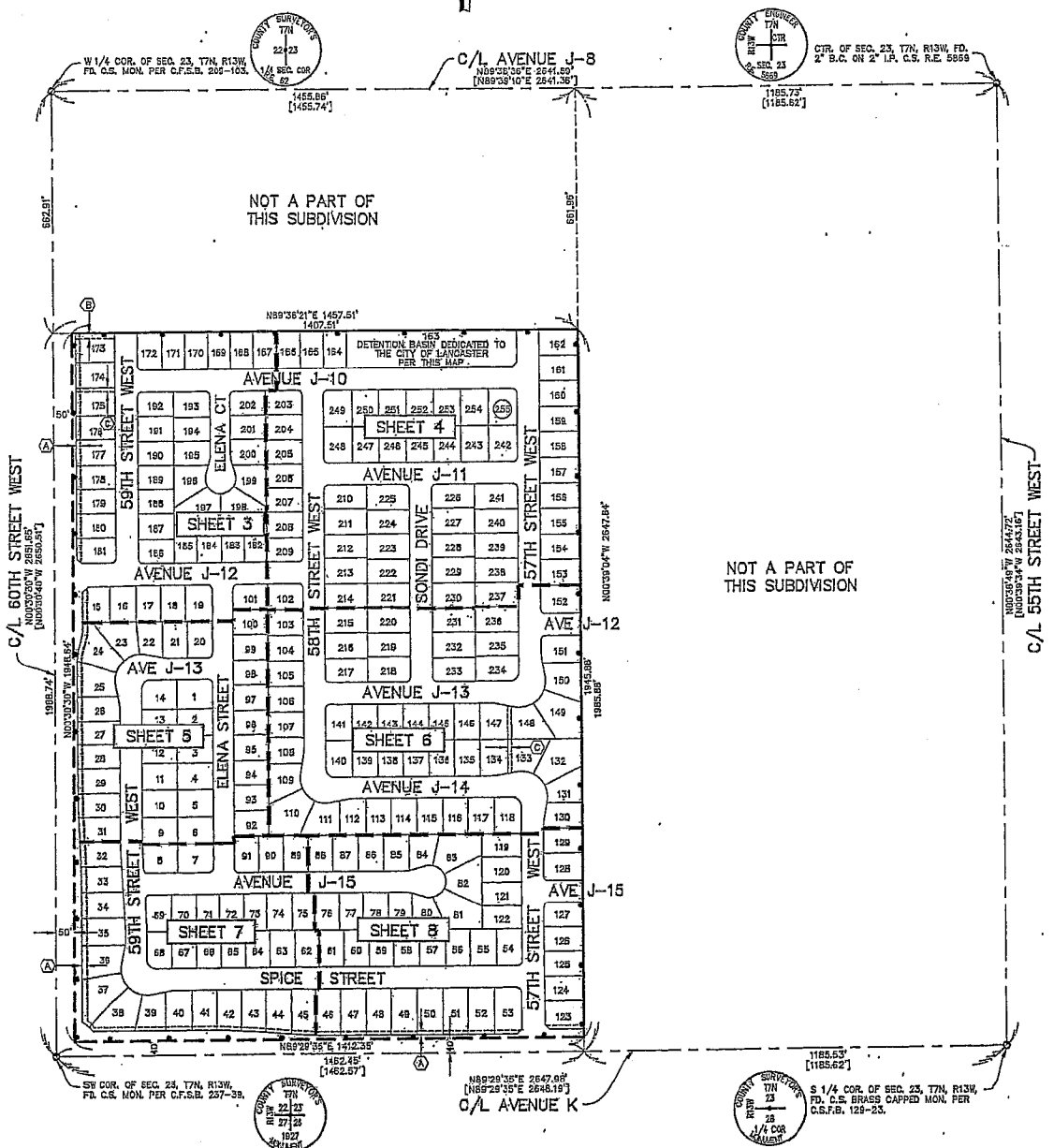
SURVEY DETAIL AND INDEX MAP

255 LOTS
LEGEND:

- ① INDICATES BOUNDARY OF THE LAND BEING SUBDIVIDED BY THIS MAP
- ② 2" IRON PIPE TAGGED "L.S. 6583" TO BE SET
- ③ 3" X 3" WAGON TAGGED "L.S. 6583" TO BE SET
- ④ FOUND MONUMENT AS DESCRIBED
- ⑤ RESTRICTED DIRECT VEHICULAR ACCESS
- ⑥ 10' WIDE LANDSCAPE EASEMENT DEDICATED TO THE CITY OF LANCASTER PER THIS MAP
- ⑦ 15' WIDE SEWER EASEMENT DEDICATED TO THE CITY OF LANCASTER PER THIS MAP
- ⑧ 10' WIDE DRAINAGE EASEMENT DEDICATED TO THE CITY OF LANCASTER PER THIS MAP SEE NOTE ON SHEET 4/8
- [] RECORD DISTANCE PER RECORD OF SURVEY 72-15

I HEREBY CERTIFY THAT SECURITY IN THE AMOUNT OF \$ 250,000.00 HAS BEEN FILED WITH THE CLERK OF THE BOARD OF SUPERVISORS OF THE COUNTY OF LOS ANGELES AS SECURITY FOR THE PAYMENT OF TAXES AND SPECIAL ASSESSMENTS COLLECTED AS TAXES ON THE LAND SHOWN ON MAP OF TRACT NO. / PARCEL MAP NO. AS REQUIRED BY LAW.

EXECUTIVE OFFICER-CLERK OF THE BOARD OF SUPERVISORS OF THE COUNTY OF LOS ANGELES, STATE OF CALIFORNIA



SCALE: 1"=100'

SHEET 2 OF 3 SHEETS

TRACT NO. 061905

IN THE CITY OF LANCASTER, COUNTY OF LOS ANGELES, STATE OF CALIFORNIA

KHOSRO POURCHAHREMAN, L.S. 7580

18 LOTS

SURVEY DETAIL AND INDEX MAP

- ① Δ INDICATES BOUNDARY OF THE LAND BEING SUBDIVIDED BY THIS MAP
- ② \circ 2" IRON PIPE, 6" DOWN, TAGGED "L.S. 7580" TO BE SET OR LEAD AND TACK, TAGGED "L.S. 7580", TO BE SET WHERE 2" IRON PIPE CAN NOT BE SET.
- ③ \square 6" SPIKE AND WASHER, TAGGED "L.S. 7580" TO BE SET OR 2" IRON PIPE, 6" DOWN, TAGGED "L.S. 7580" TO BE SET WHERE 6" SPIKE AND WASHER CAN NOT BE SET.
- ④ \square SET LEAD AND TACK TAGGED "L.S. 7580" ON TOP OF CURB FOR ALL LOT LINE PROLONGATIONS.
- ⑤ \square FOUND MONUMENT AS DESCRIBED
- ⑥ \square RESTRICTED DIRECT VEHICULAR ACCESS RIGHTS DEDICATED TO THE CITY OF LANCASTER PER THIS MAP
- ⑦ \square 10' WIDE LANDSCAPE AND MAINTENANCE EASEMENT DEDICATED TO THE CITY OF LANCASTER PER THIS MAP
- ⑧ (R1) RECORD OF SURVEY IN BOOK 65, PAGES 10-11
- ⑨ \square EXISTING RIGHT OF WAY



I HEREBY CERTIFY THAT SECURITY IN THE AMOUNT OF \$ 11,025.00 WAS DEPOSITED WITH THE CLERK OF THE BOARD OF SUPERVISORS OF THE COUNTY OF LOS ANGELES AS SECURITY FOR THE PAYMENT OF TAXES AND SPECIAL ASSESSMENTS COLLECTED AS TAXES ON THE LAND SHOWN ON MAP OF TRACT NO. 061905 PER 61905 AS INCORPORATED BY LAW.

BY Lucy Pan DATE 10-1-07

4.223 ACRES

I HEREBY CERTIFY THAT ALL CERTIFICATES HAVE BEEN FILED AND DEPOSITS HAVE BEEN MADE THAT ARE REQUIRED UNDER THE PROVISIONS OF SECTIONS 6430 AND 6432 OF THE EUBS/SECTION 12462 ACT.

EXECUTIVE OFFICER, BOARD OF SUPERVISORS OF THE COUNTY OF LOS ANGELES, STATE OF CALIFORNIA

BY Lucy Pan DATE 10-1-07

