

EXHIBIT A
ACCEPTANCE OF IMPROVEMENTS
LANCASTER LANDSCAPE MAINTENANCE DISTRICT NO. 1
14-Jul-09

PROJECT NUMBER	LOCATION	DEVELOPER	1ST YEAR MAINTENANCE COST	DATE OF COUNCIL APPROVED	RESOLUTION NO. INITIATING PROCEEDINGS FOR ANNEXATION INTO LMD	RESOLUTION NO. DECLARING ITS INTENTION TO ANNEX TO TERRITORY	RESOLUTION NO. CONFIRMING THE DIAGRAM AND ASSESSMENT
TR 49864-06	Southeast corner of 30th St. E. and Ave K-8	KB Home Greater Los Angeles Inc.	\$ 24,247.68	04/25/2006	06-88	06-89	06-92
Total:			\$ 24,247.68				

TRACT NO. 49864-06

IN THE CITY OF LANCASTER, COUNTY OF LOS ANGELES, STATE OF CALIFORNIA

KEVIN E. MORRIS L.S. 7268

293 LOTS

73.31 ACRES

SURVEY DETAIL AND INDEX MAP



I HEREBY CERTIFY THAT SECURITY IN THE AMOUNT OF \$ 100,000.00 HAS BEEN FILED WITH THE CLERK OF THE BOARD OF SUPERVISORS OF THE COUNTY OF LOS ANGELES AS SECURITY FOR THE PAYMENT OF TAXES AND SPECIAL ASSESSMENTS TO BE PAID ON THE LAND SHOWN ON MAP OF TRACT NO. 49864-06 AS RETURNED BY LAW.

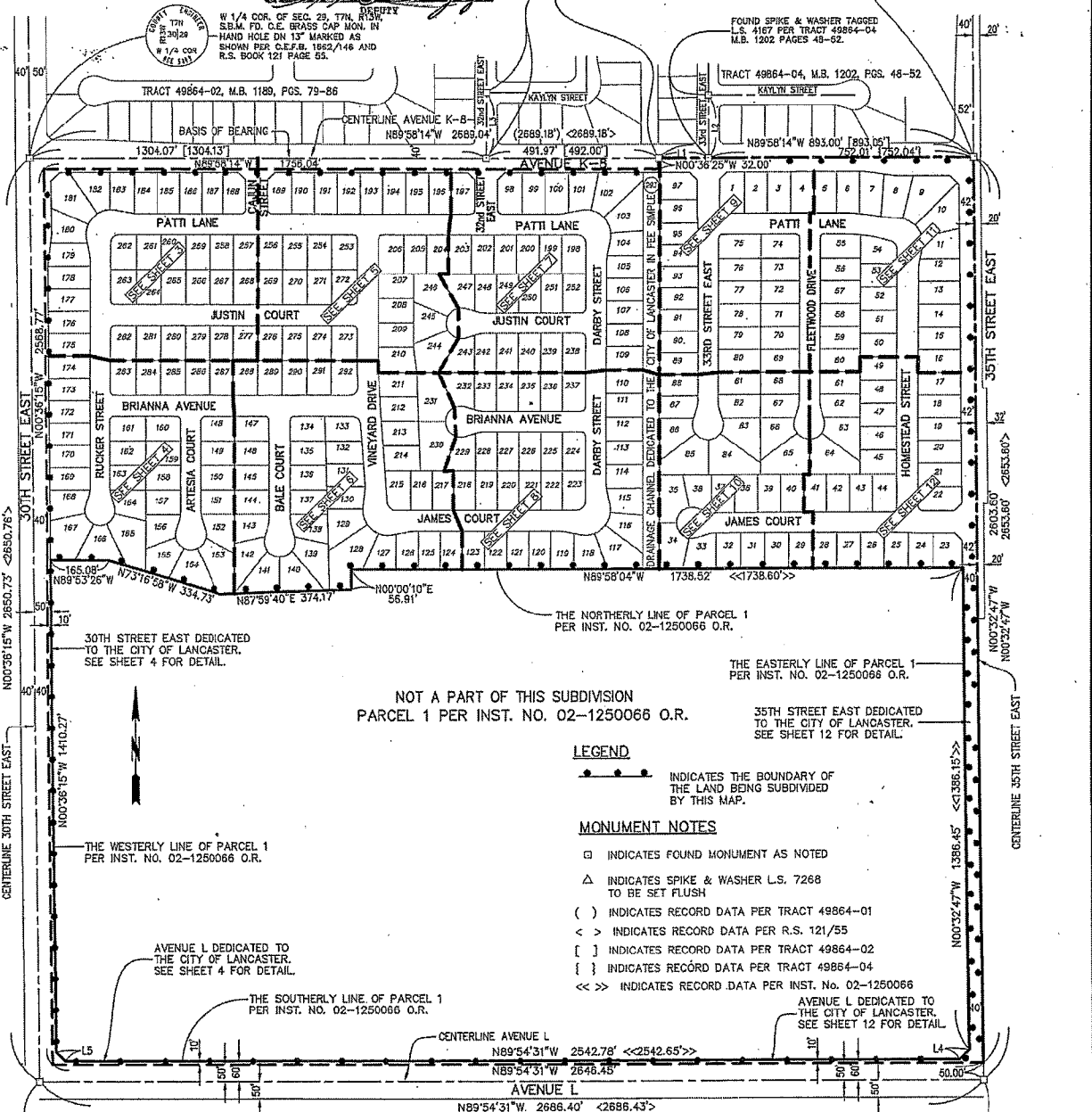
EXECUTIVE OFFICER-CLERK OF THE BOARD OF SUPERVISORS OF THE COUNTY OF LOS ANGELES, STATE OF CALIFORNIA

BY Kevin E. Morris DEPUTY

CENTER OF SEC. 29, T7N, R13W, S.B.M. FD. C.E. BRASS CAP MON. IN HAND HOLE DN 15" MARKED AS SHOWN PER C.E.F.B. 3291 PAGE 40 AND R.S. BOOK 121 PAGE 55.

FOUND SPIKE & WASHER TAGGED L.S. 6072 PER TRACT 49864-02 M.B. 1189 PAGES 79-86.

L1 = N89°58'14"W 140.99' [141.01]
 L2 = N00°33'01"W 179.01' [179.01]
 L3 = N00°36'09"W 189.01' [189.01]
 L4 = N44°49'21"E 37.97' <<N44°49'18"E 38.40'>>
 L5 = N45°18'03"W 37.82' <<N45°14'46"W 37.83'>>



NOT A PART OF THIS SUBDIVISION
 PARCEL 1 PER INST. NO. 02-1250066 O.R.

35TH STREET EAST DEDICATED TO THE CITY OF LANCASTER. SEE SHEET 12 FOR DETAIL.

30TH STREET EAST DEDICATED TO THE CITY OF LANCASTER. SEE SHEET 4 FOR DETAIL.

AVENUE L DEDICATED TO THE CITY OF LANCASTER. SEE SHEET 4 FOR DETAIL.

AVENUE L DEDICATED TO THE CITY OF LANCASTER. SEE SHEET 12 FOR DETAIL.



S.W. CORNER SEC. 29, T7N, R13W, S.B.M. FD. C.S. BRASS CAP MON. IN HAND HOLE PER CO. ENG. F.B. 3526 PG 24-25



S 1/4 CORNER SEC. 29, T7N, R13W, S.B.M. FD. C.E. BRASS CAP MON. IN HAND HOLE PER CO. ENG. F.B. 3291-39 AND R.S. BOOK 121 PAGE 55.

I HEREBY CERTIFY THAT ALL CERTIFICATES HAVE BEEN FILED AND DEPOSITS HAVE BEEN MADE THAT ARE REQUIRED UNDER THE PROVISIONS OF SECTIONS 66498 AND 68495 OF THE SUBDIVISION MAP ACT.

EXECUTIVE OFFICER-CLERK OF THE BOARD OF SUPERVISORS OF THE COUNTY OF LOS ANGELES, STATE OF CALIFORNIA

BY Kevin E. Morris DEPUTY

