

# VESTING TRACT NO. 53297

IN THE CITY OF LANCASTER, COUNTY OF LOS ANGELES,  
STATE OF CALIFORNIA

## SURVEY DETAIL AND INDEX MAP

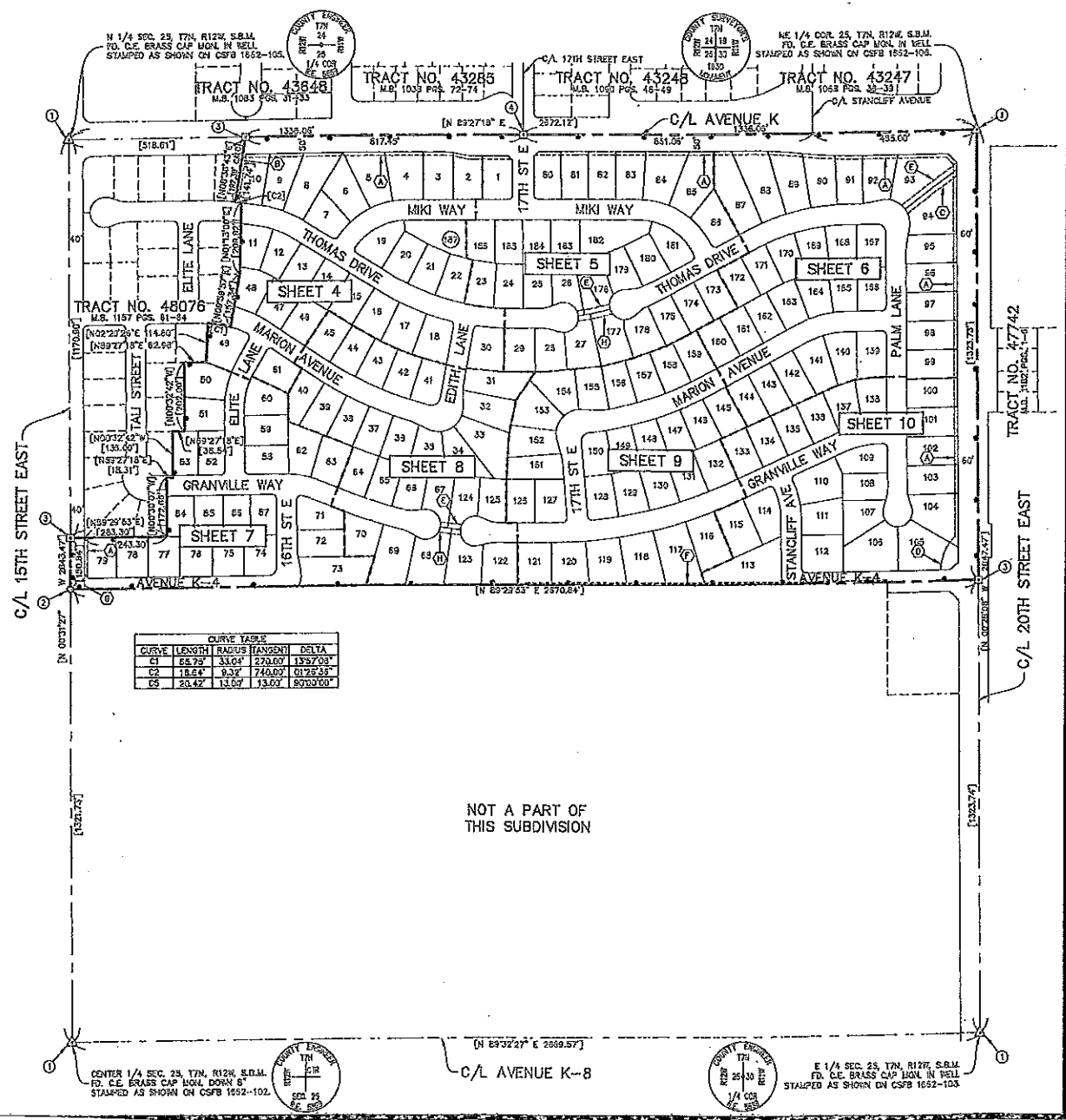
TERRAIN DEVELOPMENT, INC.  
CARLOS A. ALBA L.S. 6583

70.17 ACRES

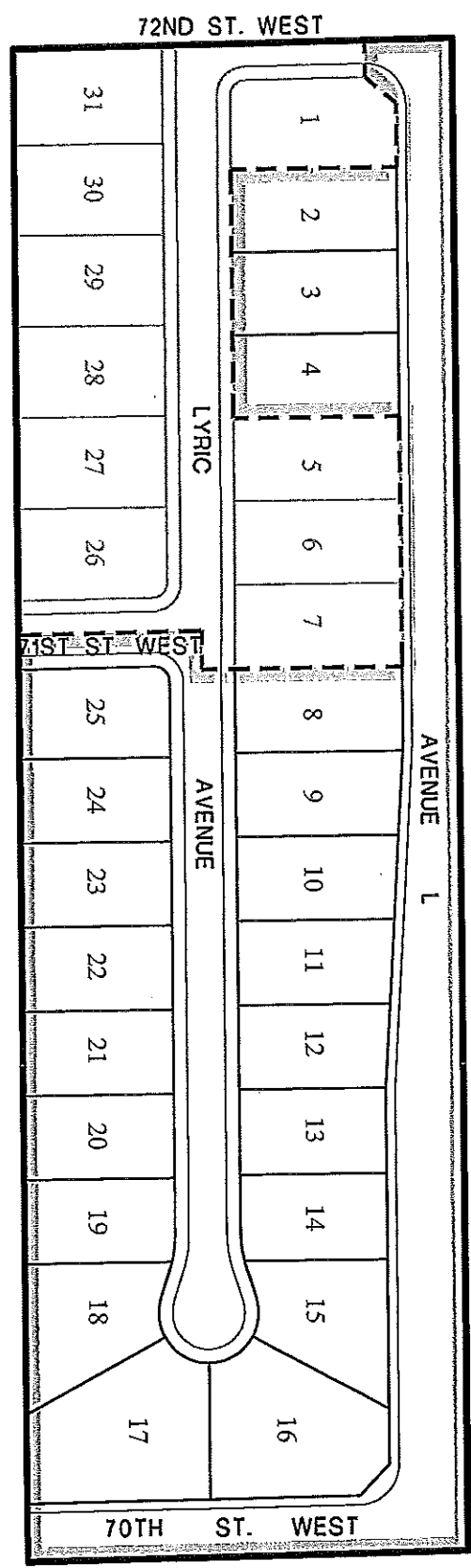
187 LOTS

LEGEND:

- ⊠ INDICATES BOUNDARY OF THE LAND BEING SUBDIVIDED BY THIS MAP
- ⊡ FOUND MONUMENT AS DESCRIBED
- ⊢ FOUND MONUMENT (2" IRON PIPE TAGGED L.S. 2304) SET PER TRACT NO. 48076
- ⊣ FOUND MONUMENT (SPIKE & WASHER TAGGED L.S. 2304) SET PER TRACT NO. 48076
- ⊤ FOUND MONUMENT (SPIKE & WASHER TAGGED L.S. 21922) SET PER TRACT NO. 43265
- ⊥ SPIKE AND WASHER TAGGED 'LS 6583' TO BE SET
- ⊦ RESTRICTED DIRECT VEHICULAR INGRESS AND EGRESS
- ⊧ 10' WIDE LANDSCAPE EASEMENT DEDICATED TO THE CITY OF LANCASTER PER THIS MAP
- ⊨ 10' WIDE DRAINAGE AND STORM DRAIN EASEMENT DEDICATED TO THE CITY OF LANCASTER PER THIS MAP
- ⊩ 15' WIDE DRAINAGE AND STORM DRAIN EASEMENT DEDICATED TO THE CITY OF LANCASTER PER THIS MAP
- ⊪ VARIABLE WIDTH DRAINAGE AND LANDSCAPE EASEMENT DEDICATED TO THE CITY OF LANCASTER PER THIS MAP
- ⊫ 10' WIDE SANITARY SEWER EASEMENT DEDICATED TO THE CITY OF LANCASTER PER THIS MAP
- ⊬ EXISTING PUBLIC UTILITY EASEMENT TO SOUTHERN CALIFORNIA Edison BY DEED RECORDED MARCH 1, 1951 AS INSTRUMENT NO. 2452 IN BOOK 35691 PAGE 23 TO REMAIN
- ⊭ EXISTING PIPE LINE EASEMENT TO SOUTHERN CALIFORNIA GAS COMPANY BY DOCUMENT RECORDED MARCH 4, 1953 AS INSTRUMENT NO. 65-27787, OFFICIAL RECORDS
- ⊮ 15' WIDE DRAINAGE AND PEDESTRIAN ACCESS EASEMENT DEDICATED TO THE CITY OF LANCASTER PER THIS MAP
- [ ] RECORD AND MEASURED DISTANCE PER TRACT NO. 48076 RECORDED IN BOOK 1157, PAGES 81-84.

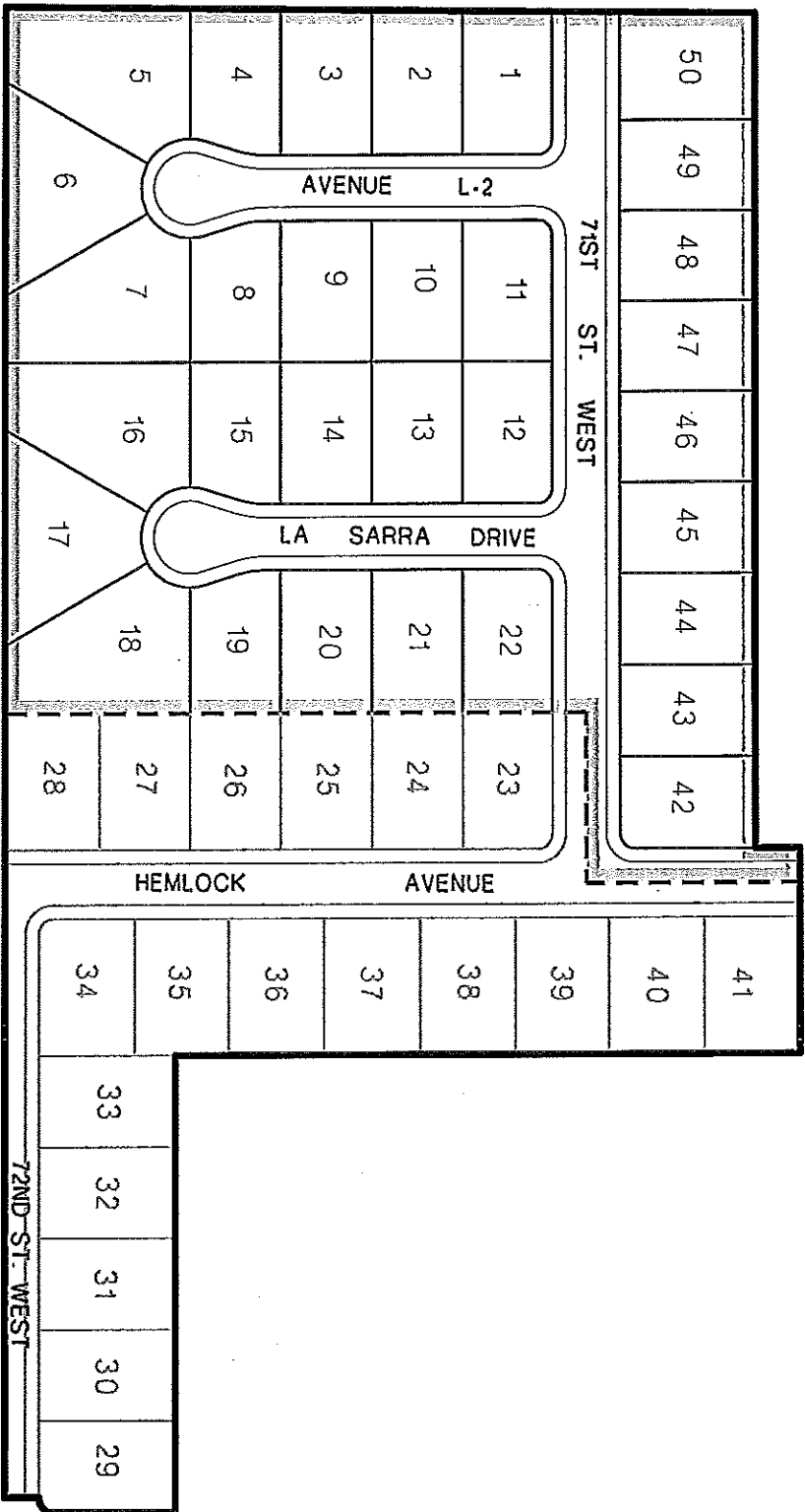


TRACT NO. 54369  
CITY OF LANCASTER  
LOTS 2-4, 8-25



NO SCALE

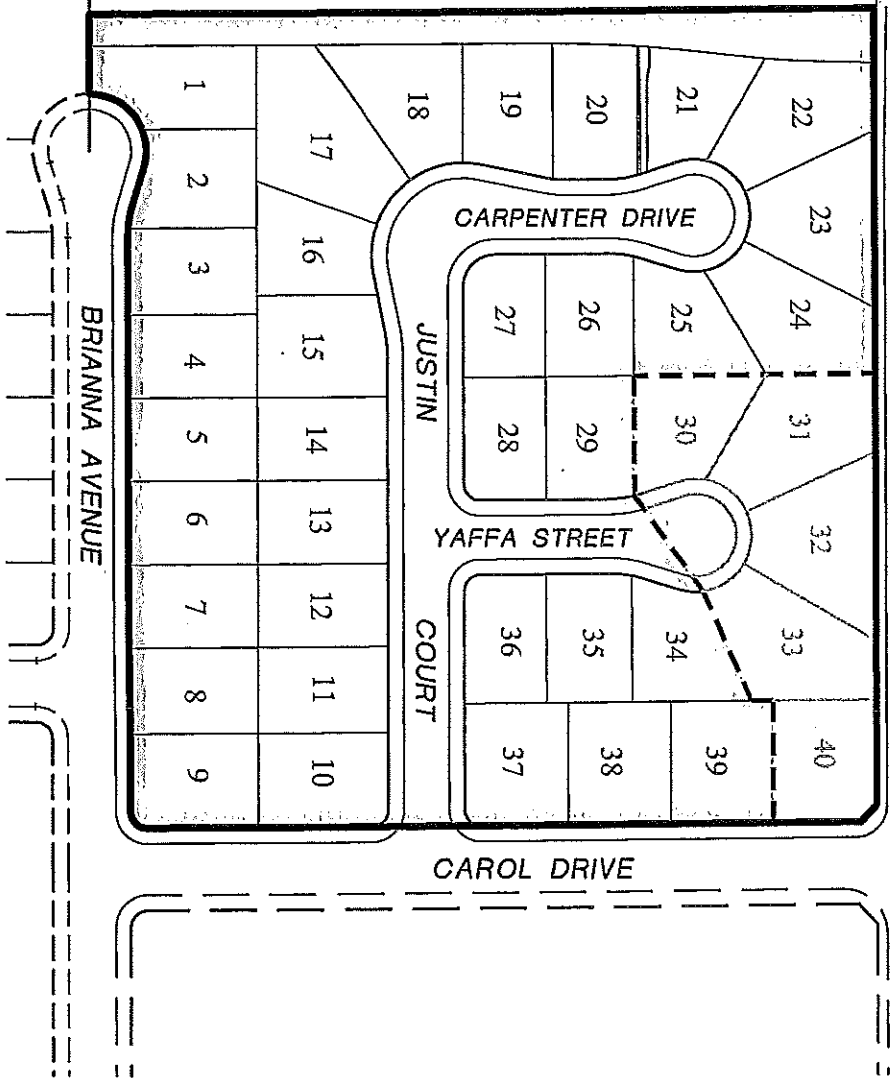
TRACT NO. 54370-01  
 CITY OF LANCASTER  
 LOTS 1-22, 42-50



NO SCALE

TRACT NO. 060943  
CITY OF LANCASTER  
RICHMOND AMERICAN HOMES  
LOTS 1-29, 34-39

AVENUE K-8



NO SCALE



SCALE 1"=150'

# TRACT NO. 061538

SHEET 3 OF 5

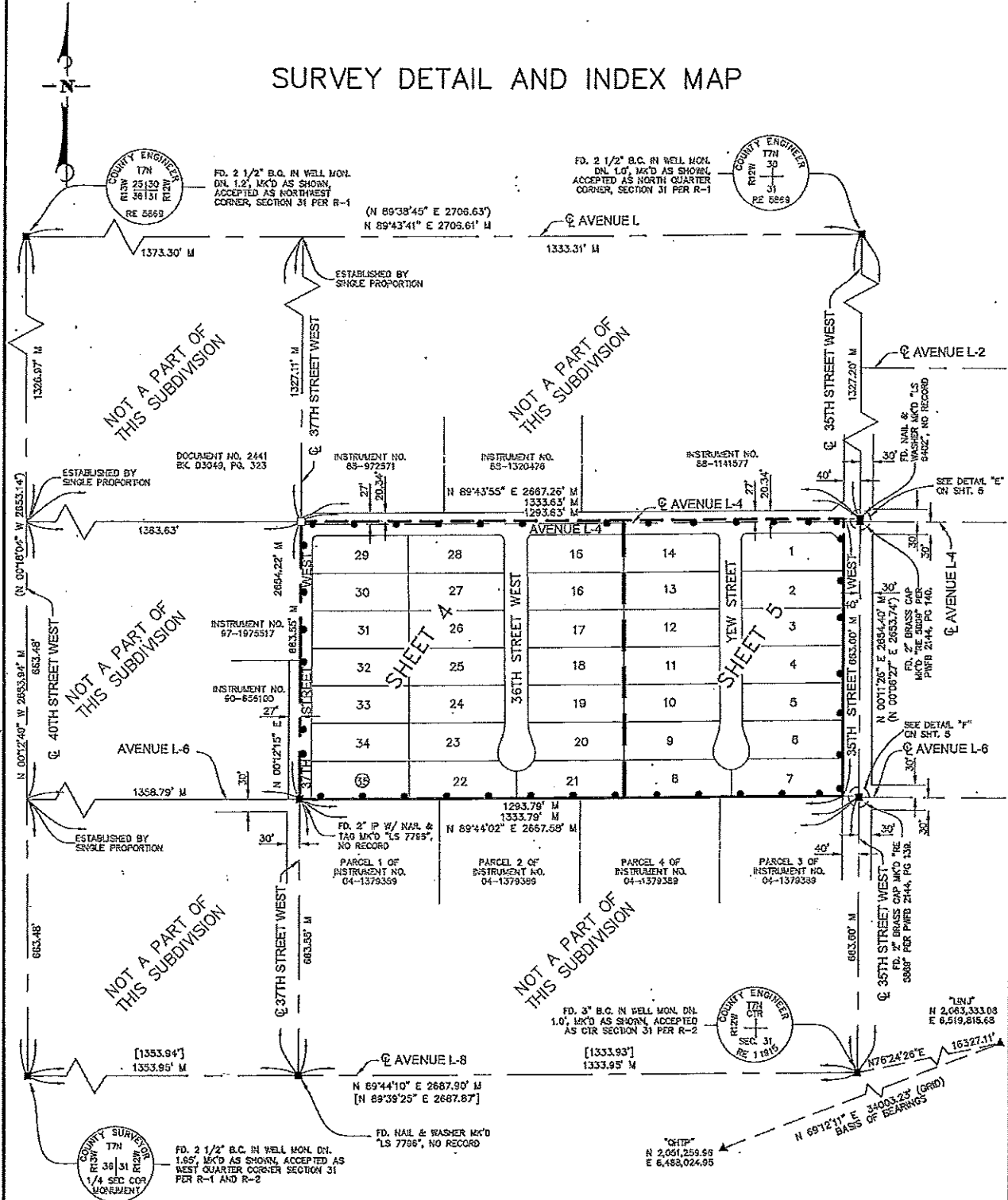
IN THE CITY OF LANCASTER, COUNTY OF LOS ANGELES,  
STATE OF CALIFORNIA

JAMES P. FALLON P.L.S. 7807

35 LOTS

20.32 ACRES

## SURVEY DETAIL AND INDEX MAP



- LEGEND**
- SHEET LIMITS
  - INDICATES THE BOUNDARY OF THE LAND BEING SUBDIVIDED BY THIS MAP
  - MONUMENT FOUND AS NOTED.
  - 2-3/8" IRON PIPE TO BE SET W/ TAG MK'D "PLS 7807"
  - SPIKE AND WASHER TO BE SET W/ TAG MK'D "PLS 7807"
  - ▲ CONTINUOUSLY OPERATING REFERENCE STATION
  - R-1 - TRACT NO 14558, BOOK 287, PAGES 17-18
  - R-2 - RECORD OF SURVEY, BOOK 165, PAGE 52
  - ( ) - INDICATES RECORD DATA PER R-1
  - [ ] - INDICATES RECORD DATA PER R-2
  - M - INDICATES MEASURED