

SCALE 1"=100'

SHEET 3 OF 5 SHEETS

TRACT NO. 54406

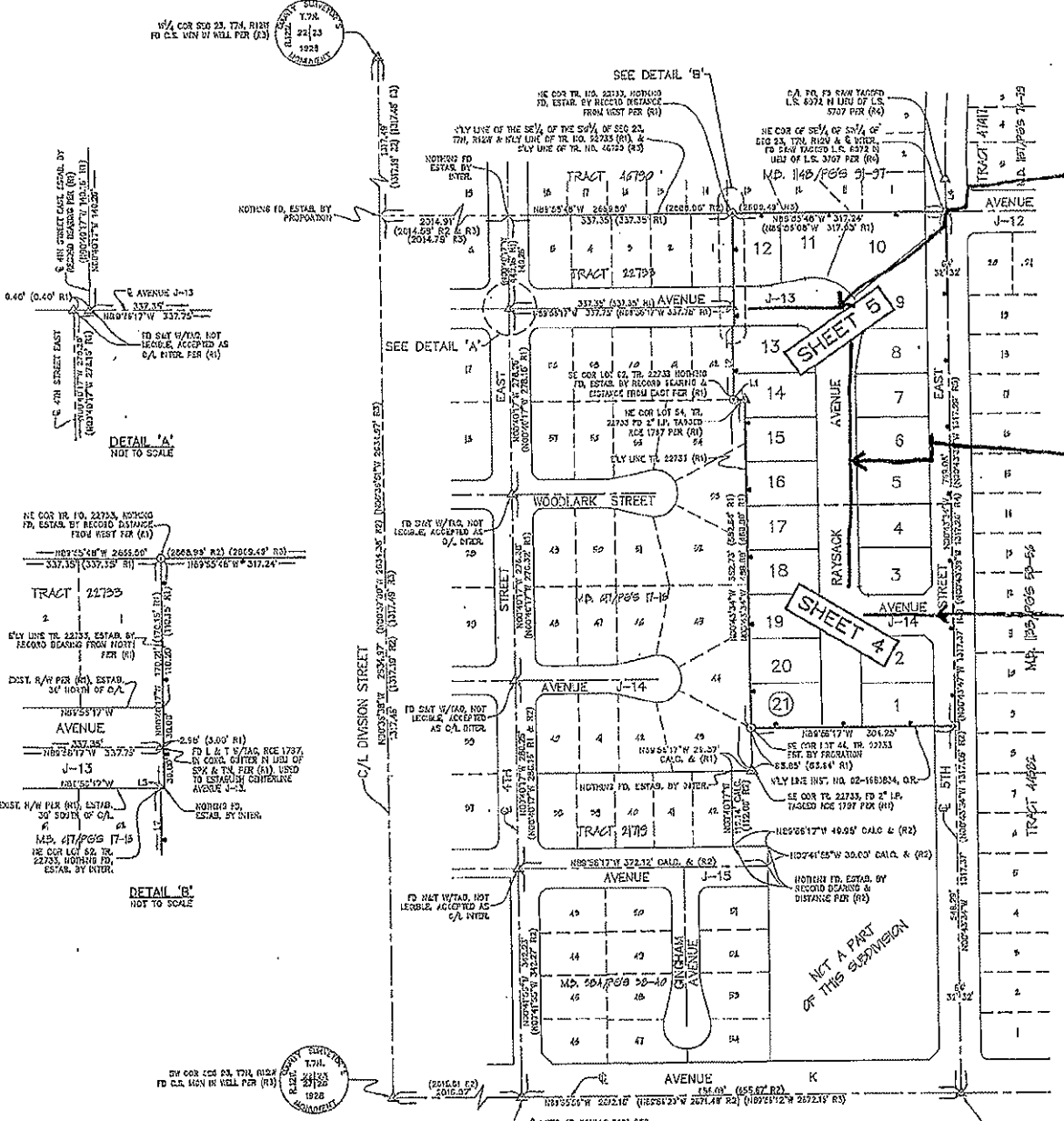
IN THE CITY OF LANCASTER, COUNTY OF LOS ANGELES,
STATE OF CALIFORNIA

CHARLES J. BECK R.C.E. 19289

21 LOTS

SURVEY DETAIL & INDEX MAP

5.46 ACRES



LEGEND

- ▲ INDICATES FOUND MONUMENT AS NOTED
- ⊠ INDICATES SPIKE & WASHER TAGGED RCE 19289 TO BE SET FLUSH
- ⊙ INDICATES LEAD & BRASS TACK WITH TAG, RCE 19289, TO BE SET IN TOP OF MASONRY WALL

(R1) TRACT NO. 22733, M.B. 517, P.O'S 17-18
 (R2) TRACT NO. 21719, M.B. 584, P.O'S 38-40
 (R3) TRACT NO. 46790, M.B. 1148, P.O'S 91-97
 (R4) TRACT NO. 47417, M.B. 1157, P.O'S 76-79
 (R5) TRACT NO. 44582, M.B. 1136, P.O'S 52-55

⊞ INDICATES THE BOUNDARY OF THE LAND BEING SUBDIVIDED BY THIS MAP.

LINE TABLE			
LINE	BEARING	LENGTH	RECORD LENGTH
1.1	N89°58'17\"	15.00'	(18.00' R1)
1.2	N00°40'17\"	110.04'	(110.00' R1)
1.3	N89°58'17\"	2.75'	(2.75' R1)
1.4	N86°43'34\"	-	(50.00' R4)

8" watermark

8" watermark

8" watermark

NOT A PART
OF THIS SUBDIVISION