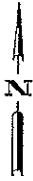


SCALE 1"=100'

SHEET 3 OF 5 SHEETS



# TRACT NO. 54406

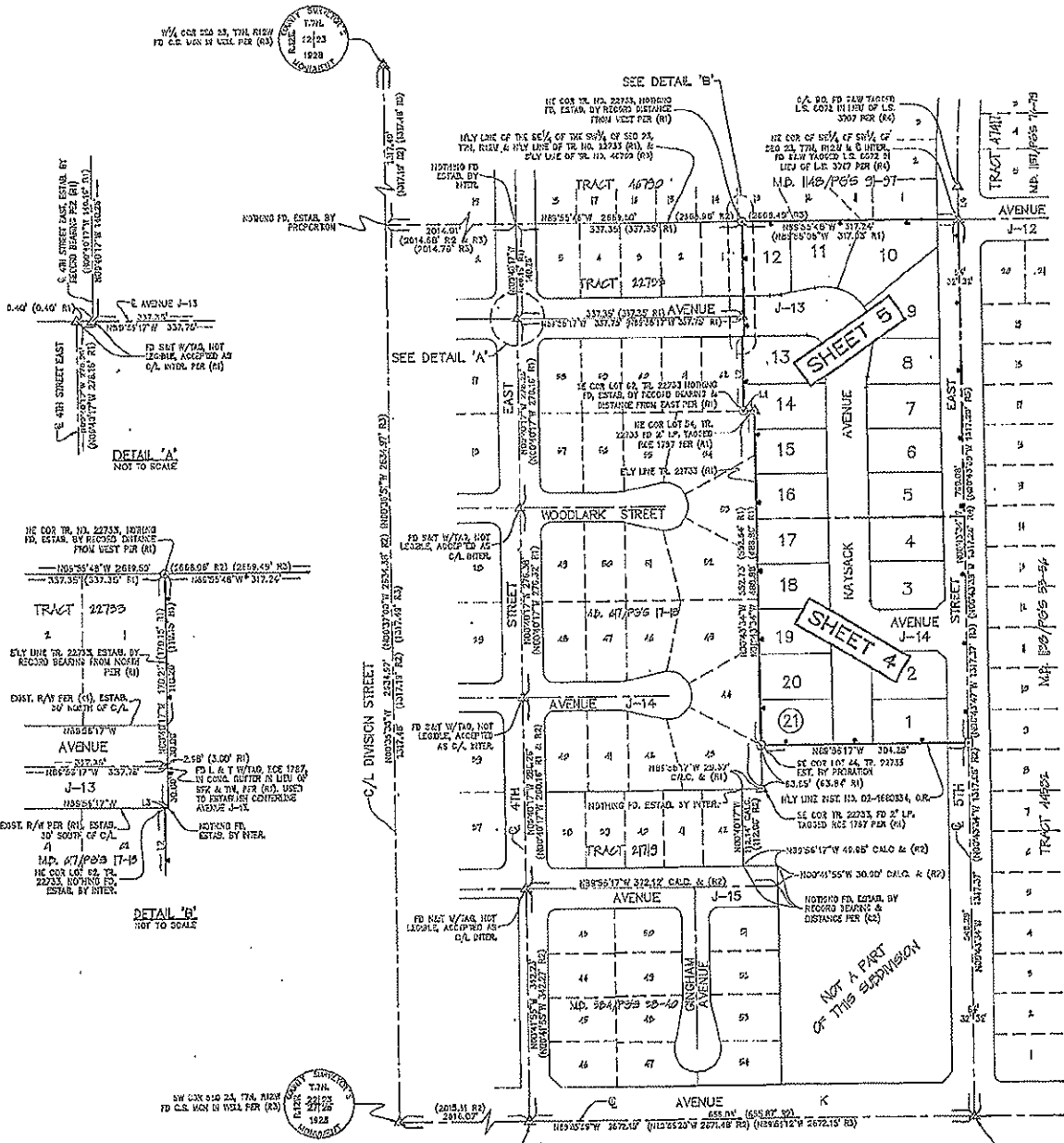
IN THE CITY OF LANCASTER, COUNTY OF LOS ANGELES,  
STATE OF CALIFORNIA

CHARLES J. BECK R.C.E. 19289

21 LOTS

## SURVEY DETAIL & INDEX MAP

5.46 ACRES



**LEGEND**

- △ INDICATES FOUND MONUMENT AS NOTED
- ⊙ INDICATES SPIKE & WASHER TAGGED RCE 19289 TO BE SET FLUSH
- ⊕ INDICATES LEAD & BRASS TACK WITH TAG, RCE 19289, TO BE SET IN TOP OF MASONRY WALL

(R1) TRACT NO. 22733, M.B. 517, PG'S 17-18  
 (R2) TRACT NO. 21719, M.B. 584, PG'S 38-40  
 (R3) TRACT NO. 48780, M.B. 1148, PG'S 81-87  
 (R4) TRACT NO. 47417, M.B. 1157, PG'S 76-78  
 (R5) TRACT NO. 44582, M.B. 1139, PG'S 53-58

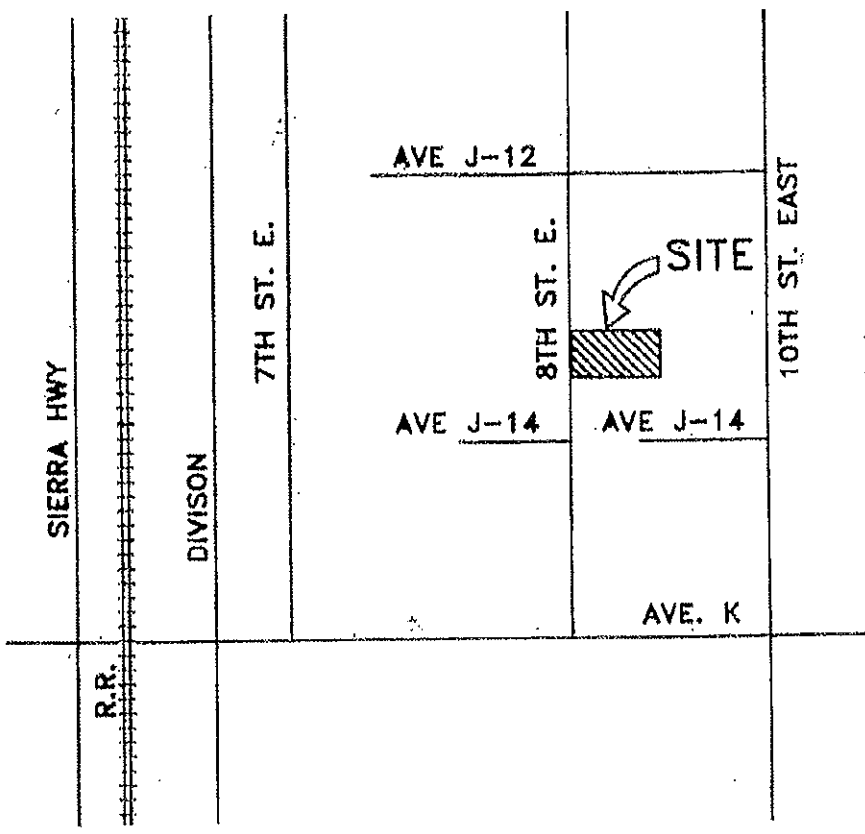
INDICATES THE BOUNDARY OF THE LAND BEING SUBDIVIDED BY THIS MAP.

LINE TABLE			
LINE	BEARING	LENGTH	RECORD LENGTH
L1	N89°56'17"W	16.00'	(16.00' R1)
L2	N00°40'17"W	110.04'	(110.00' R1)
L3	N88°56'17"W	2.75'	(2.75' R1)
L4	N00°35'34"W	-	(50.00' R4)

NOT A PART OF THIS SUBDIVISION

SHEET 4 2

SHEET 5 9



SPR 06-03  
VICINITY MAP