

EXHIBIT A
ACCEPTANCE OF IMPROVEMENTS
LANCASTER DRAINAGE MAINTENANCE DISTRICT
October 13, 2009

PROJECT NUMBER	LOCATION	DEVELOPER	1ST YEAR MAINTENANCE COST	DATE OF COUNCIL APPROVED	ANNEXATION NO.	RESOLUTION NO. CONFIRMING THE DIAGRAMS & ASSESSMENTS & ORDERING THE ANNEXATION
TR 061680	Southwest corner of Ave K and 60th St. W.	KB Home Greater Los Angeles Inc.	\$3,996.30	03/28/2006	06-13	06-77
TOTAL:			\$3,996.30			

TRACT NO. 061680

IN THE CITY OF LANCASTER, COUNTY OF LOS ANGELES, STATE OF CALIFORNIA

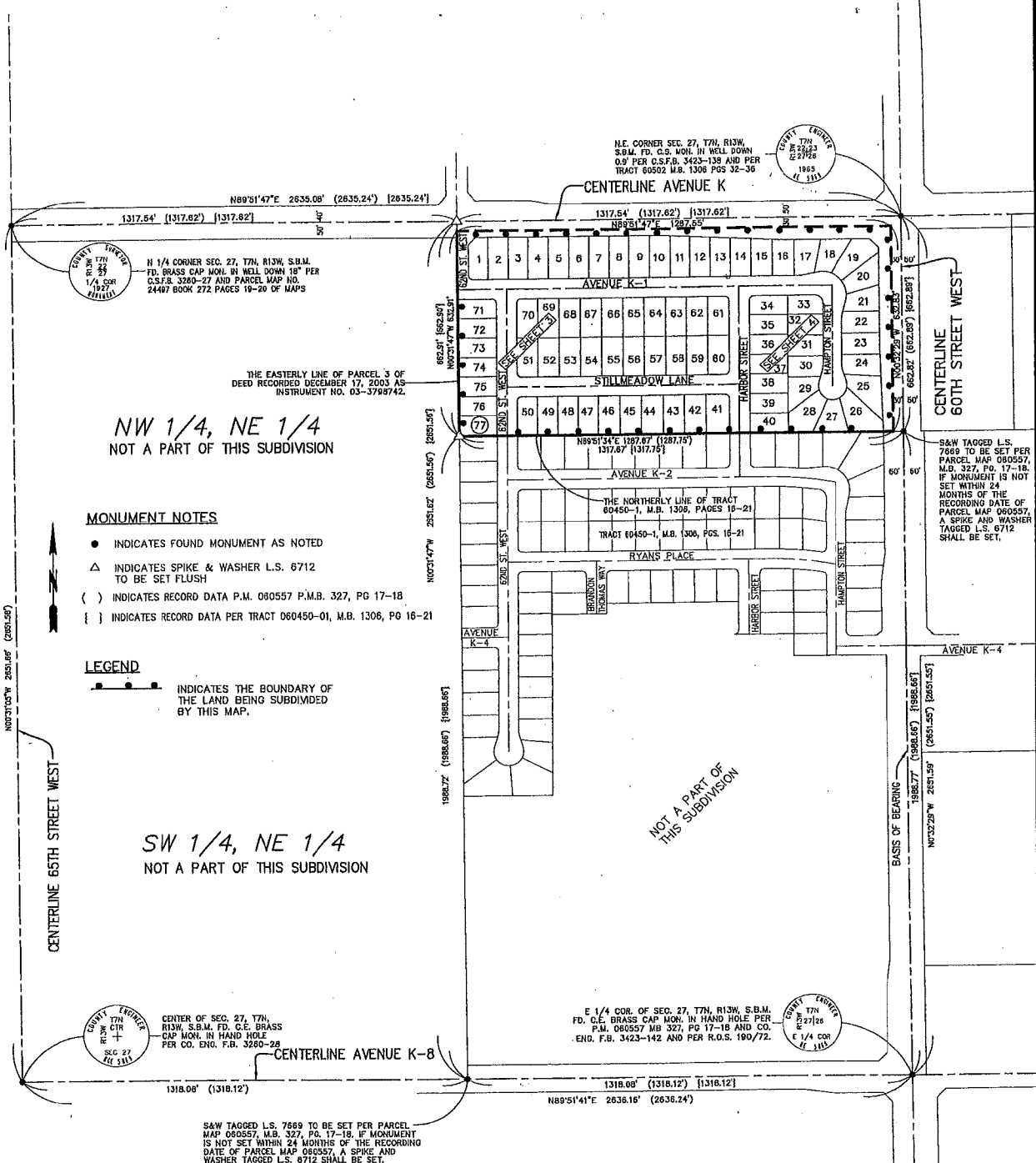
LAWRENCE WILSON L.S. 6712

77 LOTS

18.71 ACRES

SURVEY DETAIL AND INDEX MAP

06-1680-259



NW 1/4, NE 1/4
NOT A PART OF THIS SUBDIVISION

MONUMENT NOTES

- INDICATES FOUND MONUMENT AS NOTED
- △ INDICATES SPIKE & WASHER L.S. 6712 TO BE SET FLUSH
- () INDICATES RECORD DATA P.M. 060557 P.M.B. 327, PG 17-18
- { } INDICATES RECORD DATA PER TRACT 060450-01, M.B. 1306, PG 16-21

LEGEND

- — — — — INDICATES THE BOUNDARY OF THE LAND BEING SUBDIVIDED BY THIS MAP.

SW 1/4, NE 1/4
NOT A PART OF THIS SUBDIVISION

I HEREBY CERTIFY THAT SECURITY IN THE AMOUNT OF \$ 72,126.00 HAS BEEN FILED WITH THE CLERK OF THE BOARD OF SUPERVISORS OF THE COUNTY OF LOS ANGELES AS SECURITY FOR THE PAYMENT OF TAXES AND SPECIAL ASSESSMENTS COLLECTED AS TAXES ON THE LAND SHOWN ON MAP OF TRACT NO. / PARCEL MAP NO. 61680 AS REQUIRED BY LAW.

EXECUTIVE OFFICER-CLERK OF THE BOARD OF SUPERVISORS OF THE COUNTY OF LOS ANGELES, STATE OF CALIFORNIA

By *[Signature]* DEPUTY



I HEREBY CERTIFY THAT ALL CERTIFICATES HAVE BEEN FILED AND DEPOSITS HAVE BEEN MADE THAT ARE REQUIRED UNDER THE PROVISIONS OF SECTIONS 66492 AND 66493 OF THE SUBDIVISION MAP ACT.

EXECUTIVE OFFICER-CLERK OF THE BOARD OF SUPERVISORS OF THE COUNTY OF LOS ANGELES, STATE OF CALIFORNIA

By *[Signature]* DEPUTY



S&W TAGGED L.S. 7689 TO BE SET PER PARCEL MAP 060557, M.B. 327, PG. 17-18. IF MONUMENT IS NOT SET WITHIN 24 MONTHS OF THE RECORDING DATE OF PARCEL MAP 060557, A SPIKE AND WASHER TAGGED L.S. 6712 SHALL BE SET.

E 1/4 COR. OF SEC. 27, T7N, R13W, S.B.M. FD. C.E. BRASS CAP MON. IN HAND HOLE PER P.M. 060557 MB 327, PG 17-18 AND CO. ENG. F.B. 3423-142 AND PER R.O.S. 190/72.

COUNTY CLERK
T7N
R13W
S27E
1/4 COR
1865
11 3111

N 1/4 CORNER SEC. 27, T7N, R13W, S.B.M. FD. BRASS CAP MON. IN WELL DOWN 18" PER C.S.F.B. 3260-27 AND PARCEL MAP NO. 24487 BOOK 272 PAGES 19-20 OF MAPS

THE EASTERLY LINE OF PARCEL 3 OF DEED RECORDED DECEMBER 17, 2003 AS INSTRUMENT NO. 03-3798742.

N.E. CORNER SEC. 27, T7N, R13W, S.B.M. FD. C.S. MON. IN WELL DOWN 0.9" PER C.S.F.B. 3423-138 AND PER TRACT 06092 M.B. 1306 PGS 35-36

COUNTY CLERK
T7N
R13W
S27E
1/4 COR
1865
11 3111

S&W TAGGED L.S. 7689 TO BE SET PER PARCEL MAP 060557, M.B. 327, PG. 17-18. IF MONUMENT IS NOT SET WITHIN 24 MONTHS OF THE RECORDING DATE OF PARCEL MAP 060557, A SPIKE AND WASHER TAGGED L.S. 6712 SHALL BE SET.

NOT A PART OF THIS SUBDIVISION