

12th St. West



Avenue J-15

Alley

Avenue K

12th St. West

12th St. West



Avenue J-13

Two new ramps; construct 4' sidewalk with parkway; one new drive approach.

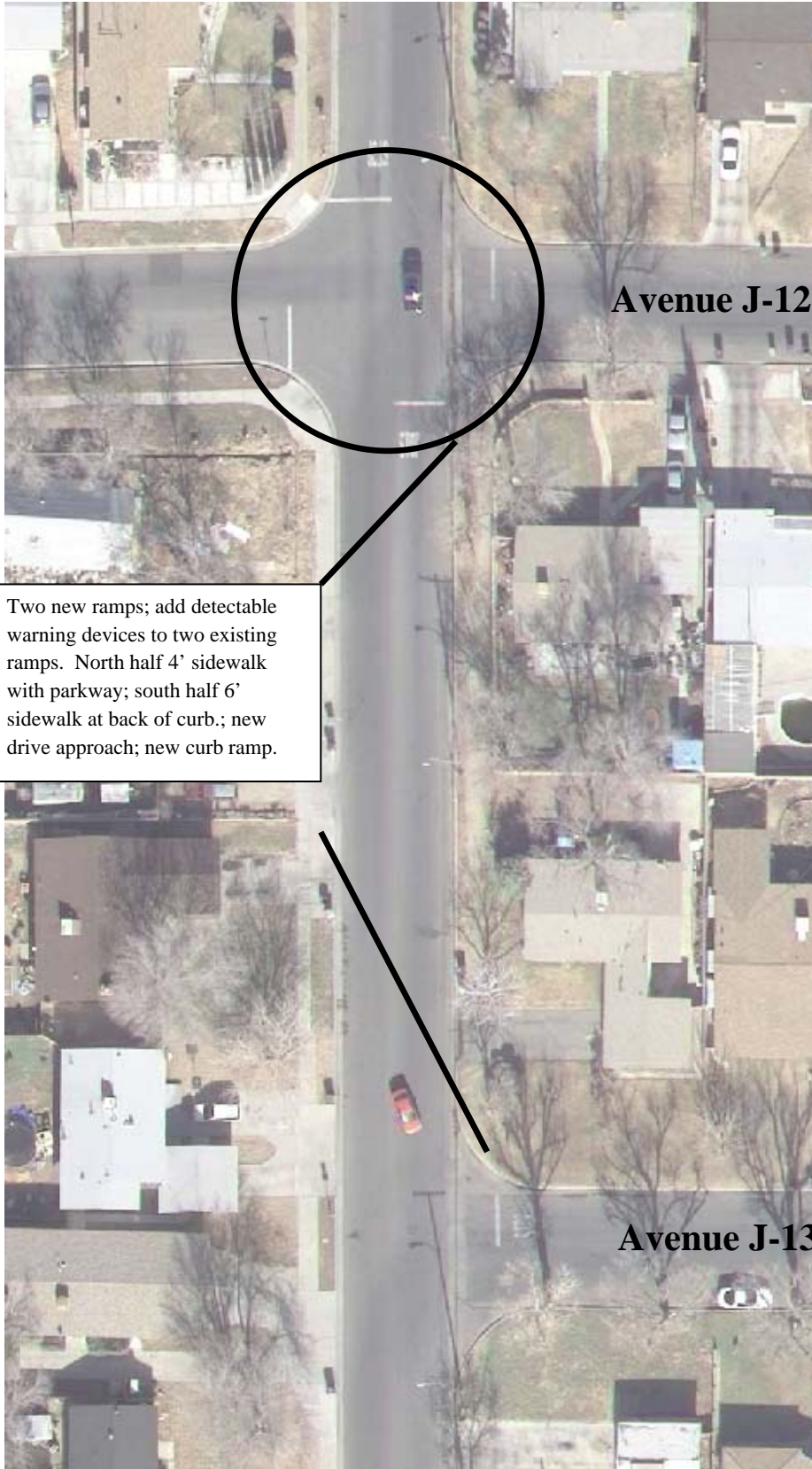
Avenue J-14

Two new ramps; construct 4' sidewalk with parkway; one new drive approach.

Avenue J-15

12th St. West

12th St. West



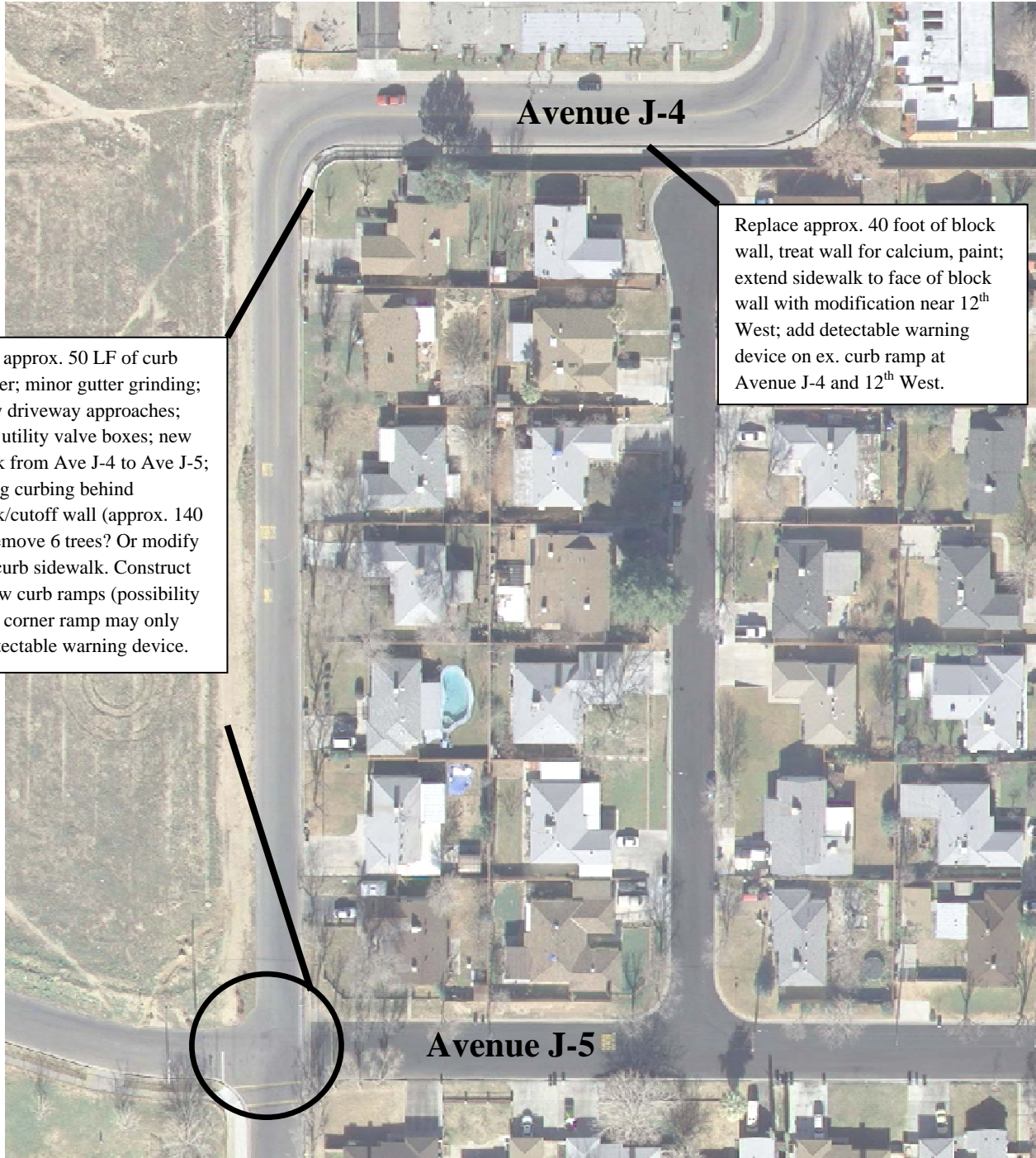
Avenue J-12

Two new ramps; add detectable warning devices to two existing ramps. North half 4' sidewalk with parkway; south half 6' sidewalk at back of curb.; new drive approach; new curb ramp.

Avenue J-13

12th St. West

Kingtree Avenue



Avenue J-4

Replace approx. 40 foot of block wall, treat wall for calcium, paint; extend sidewalk to face of block wall with modification near 12th West; add detectable warning device on ex. curb ramp at Avenue J-4 and 12th West.

Replace approx. 50 LF of curb and gutter; minor gutter grinding; two new driveway approaches; adjust 5 utility valve boxes; new sidewalk from Ave J-4 to Ave J-5; including curbing behind sidewalk/cutoff wall (approx. 140 LF). Remove 6 trees? Or modify behind curb sidewalk. Construct three new curb ramps (possibility that SW corner ramp may only need detectable warning device.

Avenue J-5

12th St. West

12th St. West



Avenue J-11

Rimvale Ave.



Rimvale Ave.